



## Assembly Instructions

..... **Mountain fold**(dotted line) ——— **Scissors line**(solid line)  
\*Make a mountain fold. \*Cut along the line.

- - - - - **Valley fold**  
(dashed and dotted line) ——— **Cut in line**(solid line)  
\*Make a valley fold. \*Make a cut.

▲ **Black triangle**  
Glue here

△ **White triangle**  
Glue the back



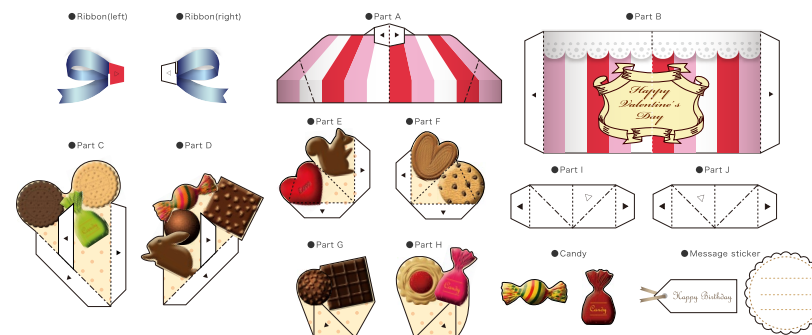
**You will need**

scissors, paste, a used ballpoint pen (tracing along the fold lines makes them easier to fold)



**Caution:** Glue, scissors, and other tools may be dangerous to young children so be sure to keep them out of the reach of young children.

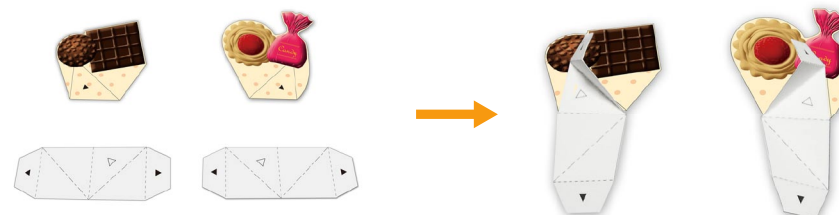
1 Cut out the parts and fold them along the fold lines on each.



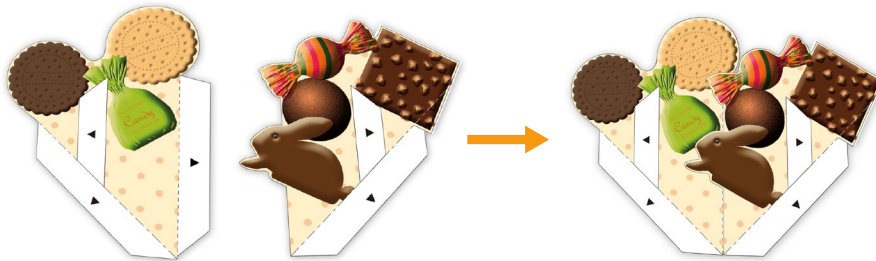
2 Glue the right half of the ribbon to part A. Then glue the left half of the ribbon to part A, slotting it onto the right half of the ribbon as you go.



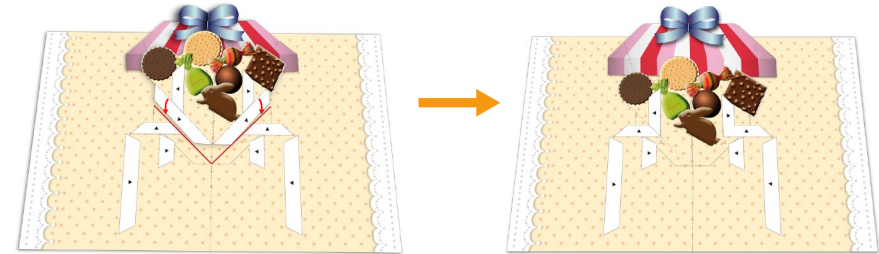
3 Glue part I and part G together at the glue tabs, and do the same for parts J and H.



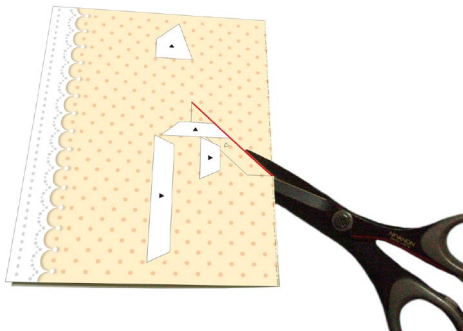
4 Join parts C and D together.



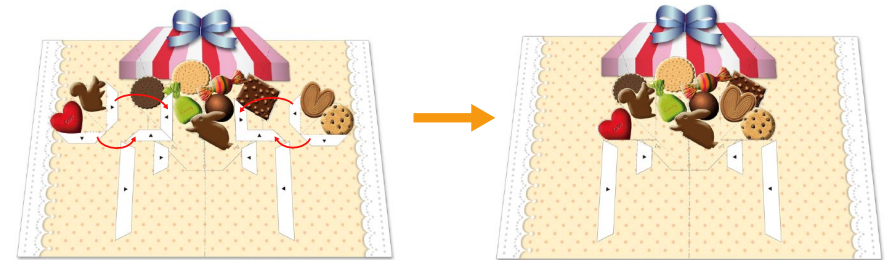
7 Insert the glue tabs on 4 into the slot on the base, and glue down on the reverse side of the base.



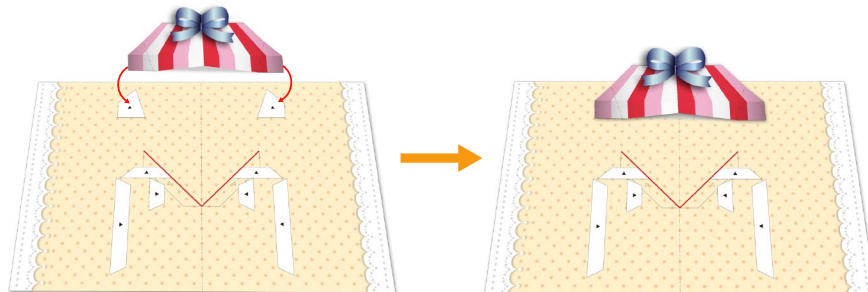
5 Fold the base along the center line, and cut slots along the red lines.



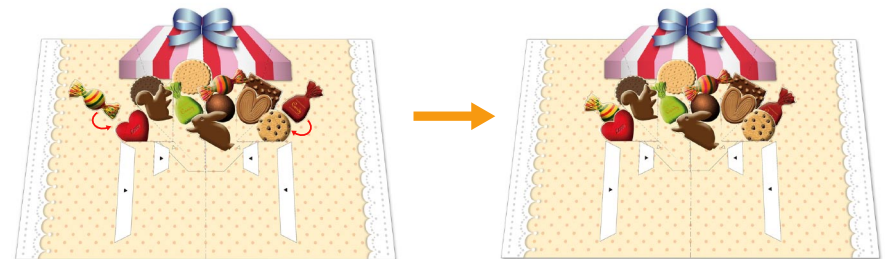
8 Attach part E to the glue spots on the left of 4, and part F to the glue spots on the right.



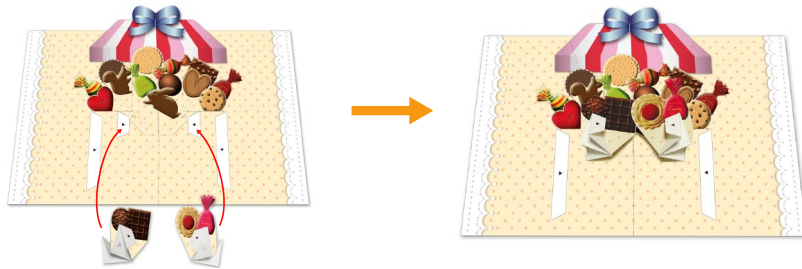
6 Unfold the base again, and glue 2 to it at the glue spots.



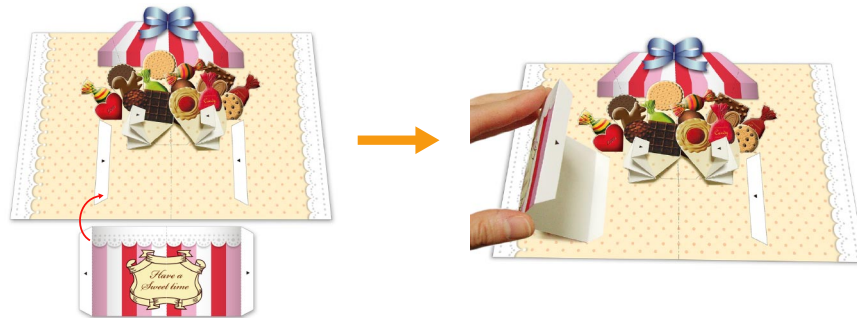
9 Glue more candy around E and F and in any free spaces on the base.



- 10 Fold 3 along the fold lines, and attach it to the glue spots on the base. (Make sure it is up the right way.)



- 11 Glue one of the glue tabs on part B to the base.



- 12 Put glue on the glue tabs of 3, the parts you folded and attached to the base in step 10. Then, holding them down flat, cover them with part B and attach part B to their glue tabs. (Glue one at a time.) Finally, attach the remaining glue tab on part B to the base.



- 13 You may choose to add a message sticker or other decorations if you like.



- 14 Stick on a colored paper cover onto half of the rear side of the base paper.



- 15 14 is the completed card when the cover is stuck on to the other half side.

