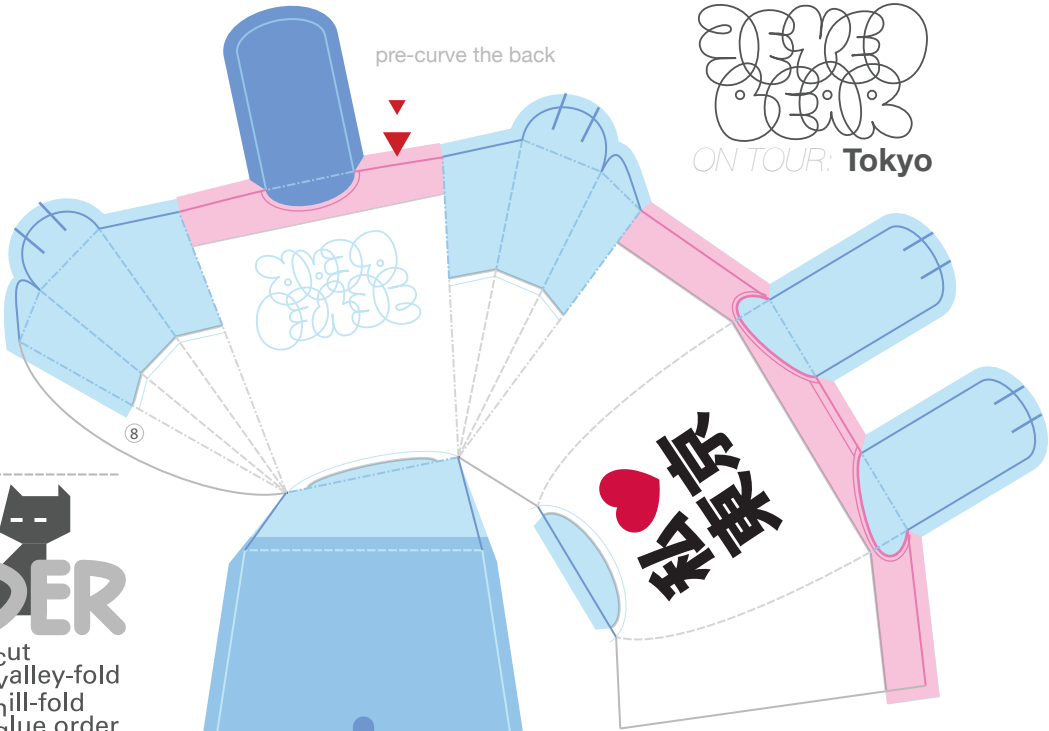



ON TOUR: Tokyo

pre-curve the back





NÖDDER

 cut

 valley-fold

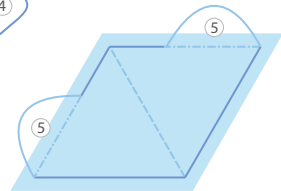
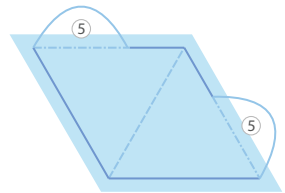
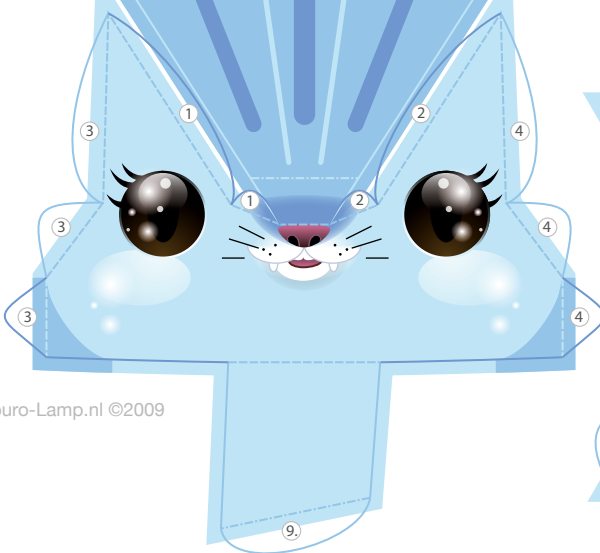
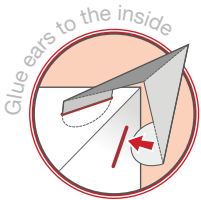
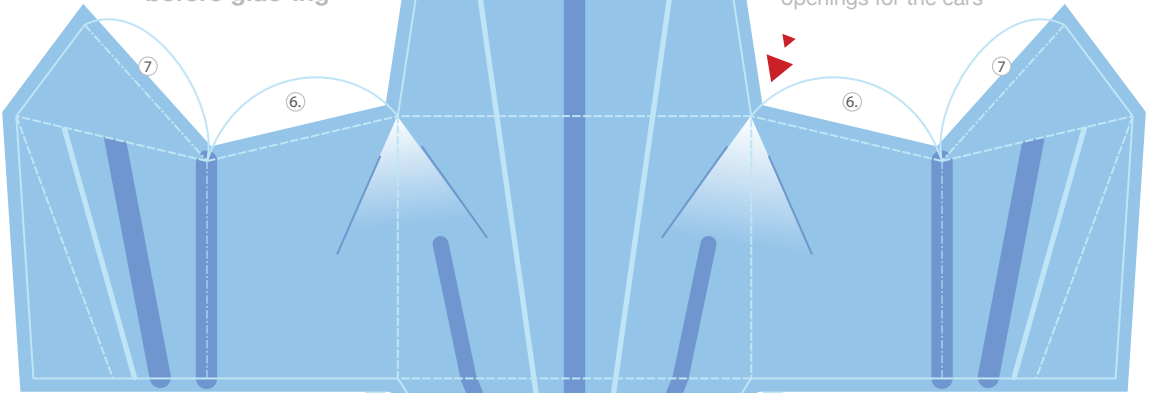
 hill-fold

 glue order

 ① ② ③ ④ ⑤ ⑥ ⑦ ⑧

Grease and pre-fold before glue-ing

Don't forget to cut the openings for the ears




 Designer:

 Maarten@buro-Lamp.nl ©2009