

# PAPER CRAFT

<http://www.canon.com/c-park/en/>



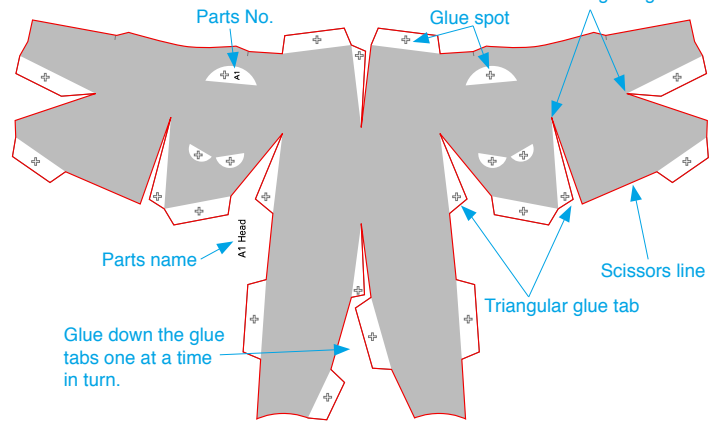
## A Assemble the head

Use patterns: Page2 / Page3.

① Cut out A1 by cutting along the lines.

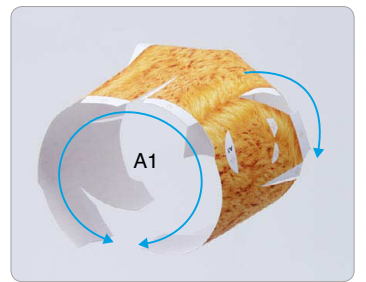
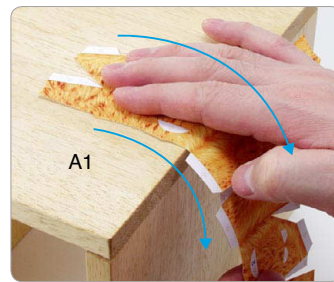
★ Cut along the line marked .

Cut a slot right in to the apex of the triangular glue tab.



② The parts will be easier to assemble if curled.

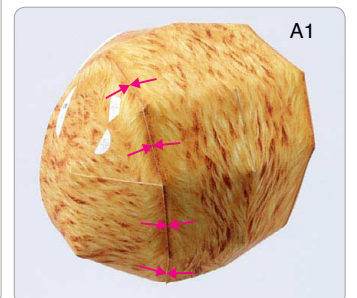
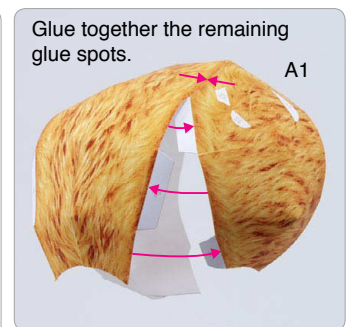
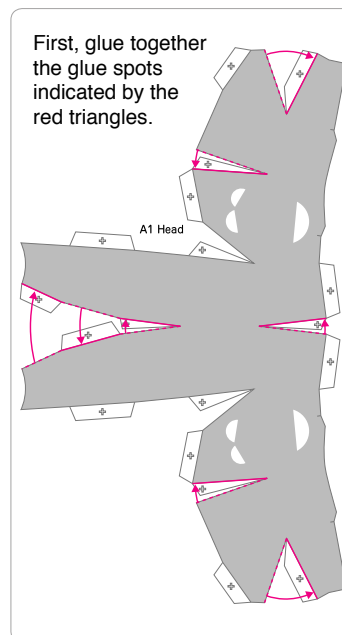
★ Using the photo as a guide, apply pressure with the palm of your hand, gradually curling the paper in the direction of the arrow.



③ Add a slight curl to A1 when attaching it.

★ Attach the triangular glue tabs so that the front side becomes convex.

★ Using the photo as a guide, attach in the direction of the arrow.



Tools	Notation Key
Scissors	Scissors line
Paste, or woodwork glue	Mountain fold
Stencil pen, or bodkin	Valley fold
Ruler	Glue spot
	A1, B1 Parts No.

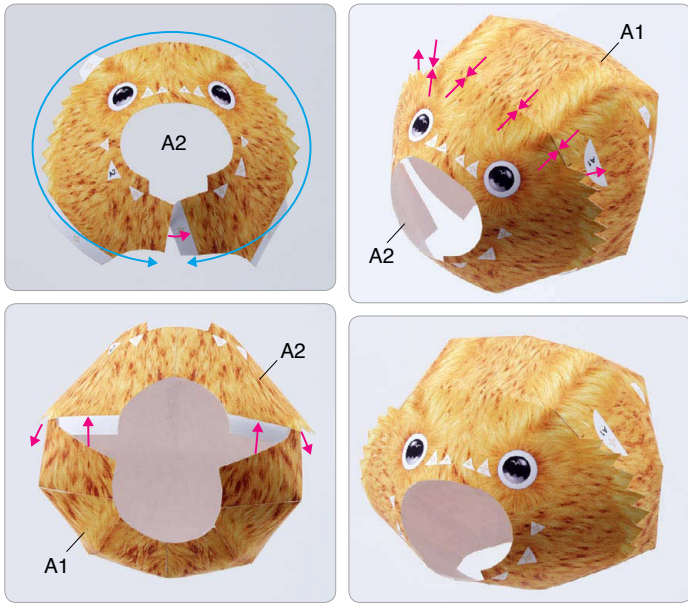
◆ The Assembly instructions are divided into five blocks: A (head), B (body), C (legs), D (arms), and E (Items). Follow the instructions for each block to assemble your teddy bear.

◆ ★ marks a basic assembly technique that remains the same regardless of the part. Instructions are printed only for the first instance.

<Caution>

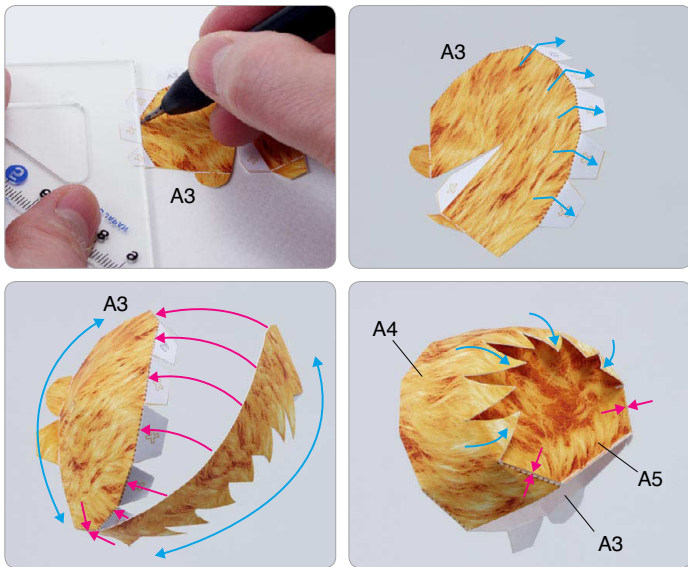
- ✘ Keep scissors and glue away from small children.
- ✘ Be careful not to cut your fingers when using scissors.

④ Curl A2, assemble it, and attach A1.

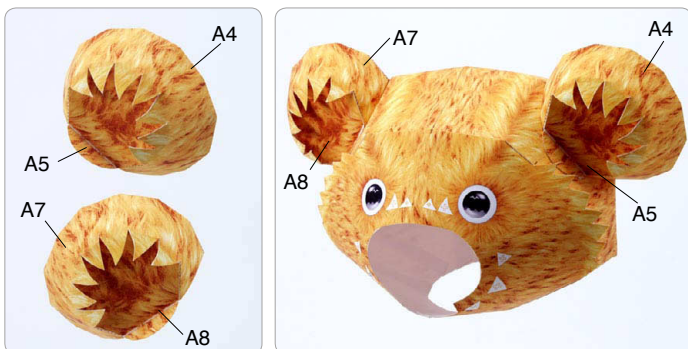


⑤ Fold over the fold lines on parts A3, A4 and A5, and then attach the parts together.

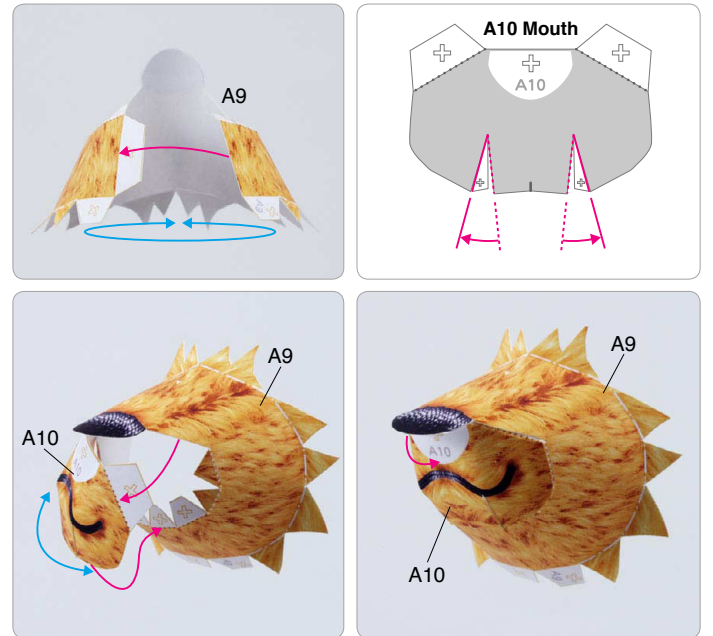
★ Trace along the mountain fold line with a stencil pen, scoring it to make it easier to fold.



⑥ Similarly, assemble parts A6, A7 and A8 and stick on the ears, matching them up with the shape of the glue spots on the head.



⑦ Assemble A9 and A10, and attach them.

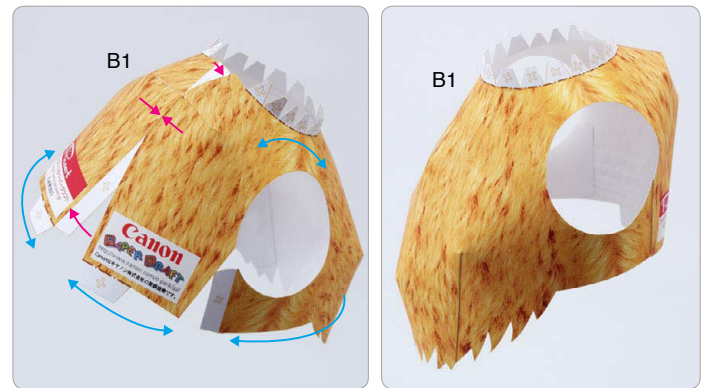


\*Note: The completed mouth will be attached in the last step.

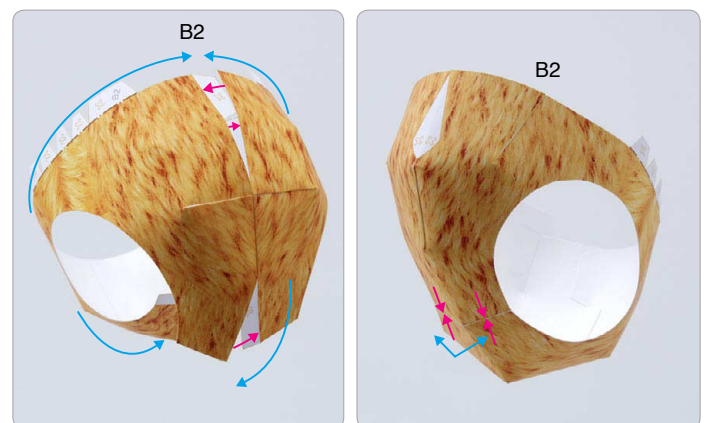
## **B** Assemble the body

Use patterns: Page4 / Page5.

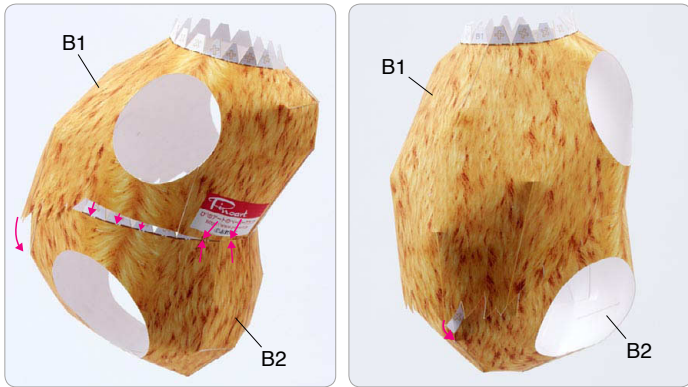
① Assemble B1.



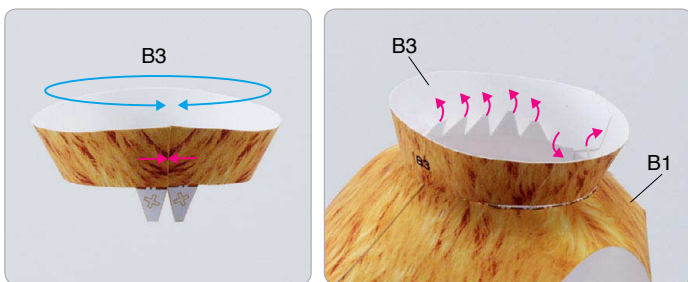
② Assemble B2.



③ Attach B1 and B2 together.



④ Assemble B3 and attach it to B1 to complete the body.

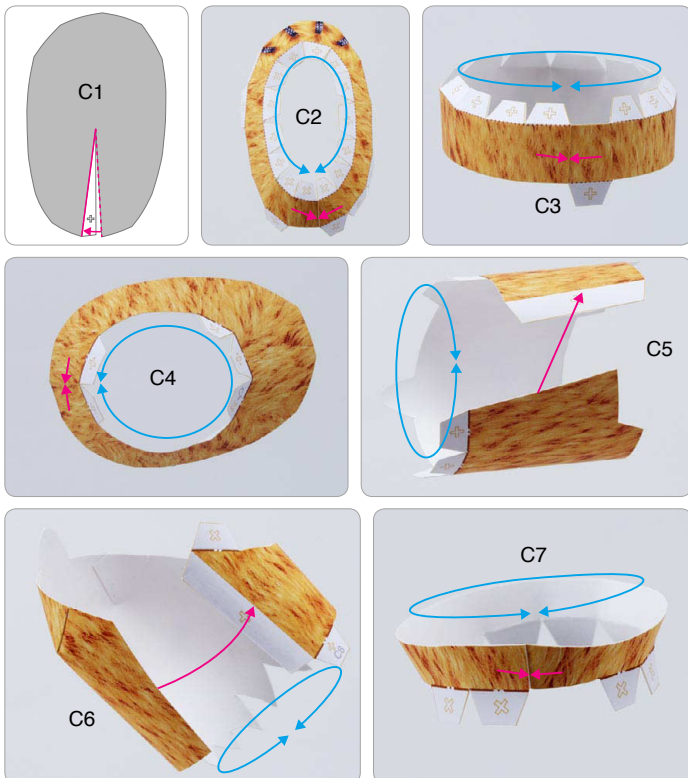


\*Note: The completed head will be fitted in a later step.

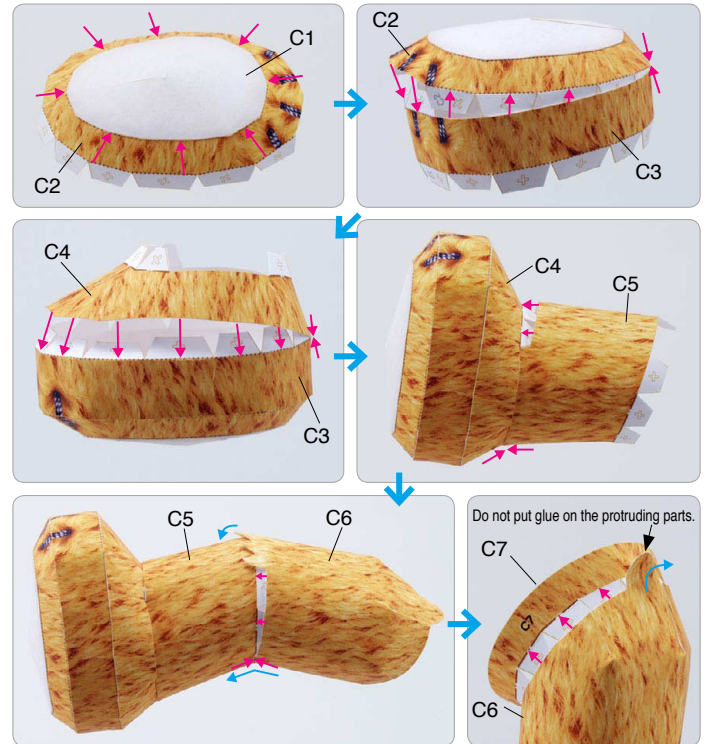
## C Assemble the legs

Use patterns: Page6 / Page7.

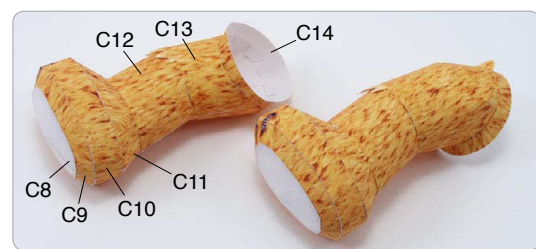
① Assemble parts C1 through C7.



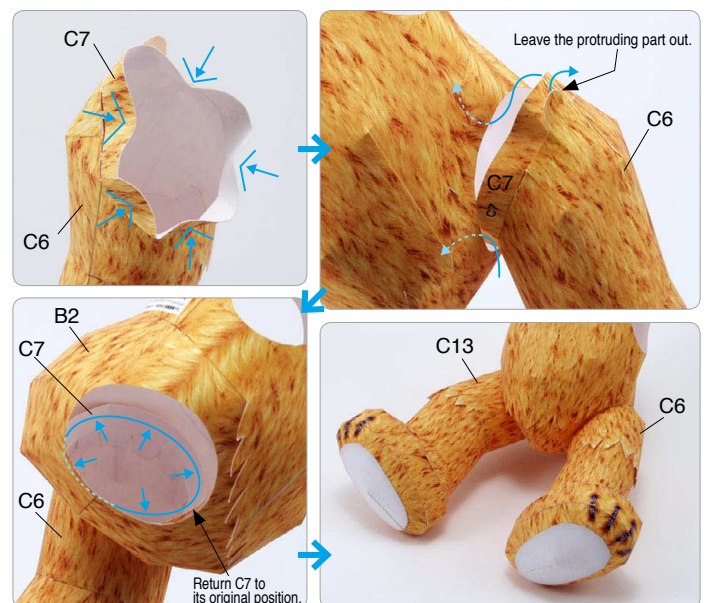
② Attach C1 through C7 together.



③ Assemble parts C8 through C14 in the same way.



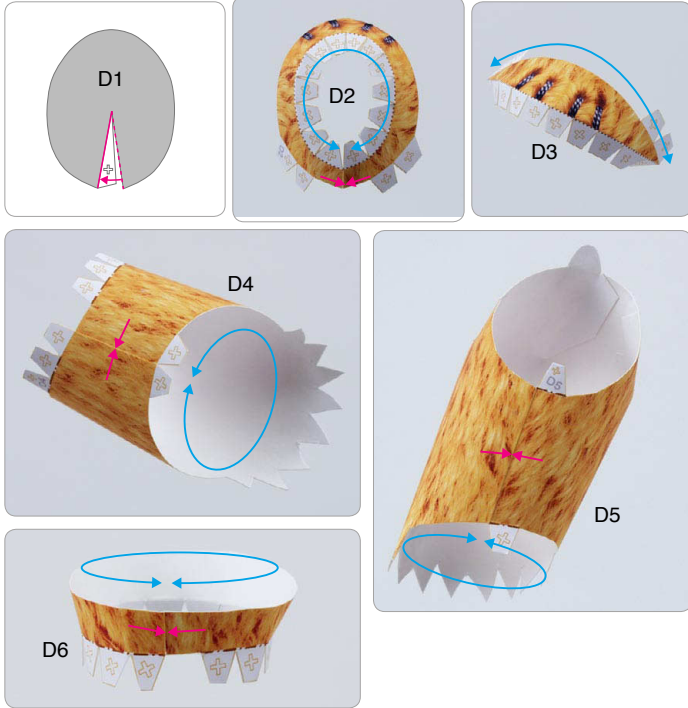
④ Fit both legs to the completed body.



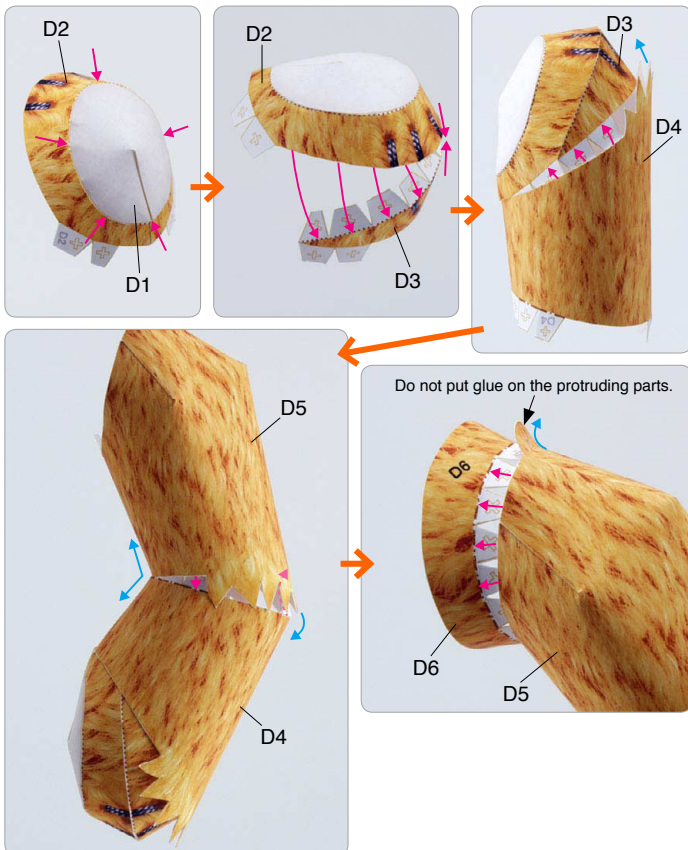
# D Assemble the arm

Use patterns: Page 8.

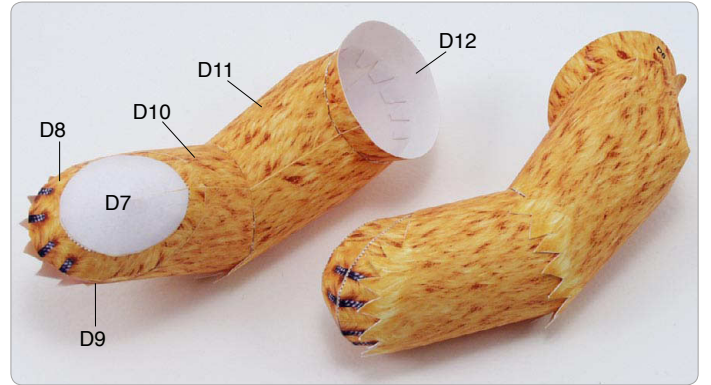
① Assemble parts D1 through D6.



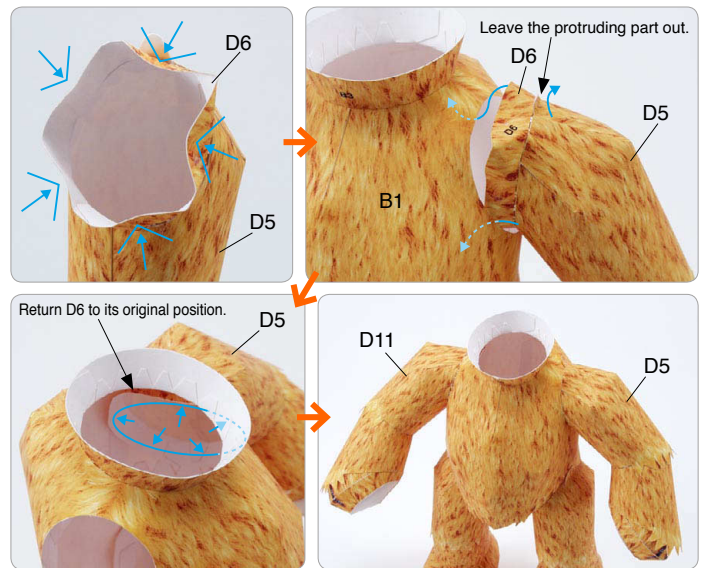
② Attach D1 through D6 together.



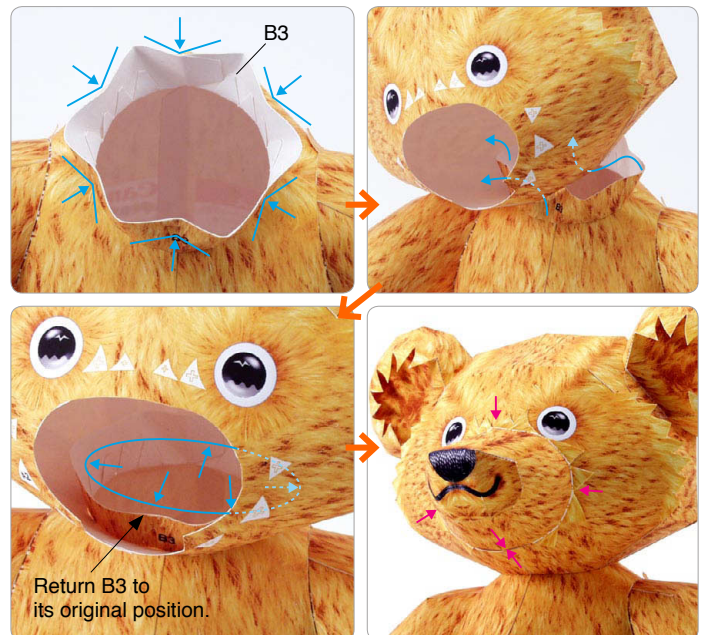
③ Assemble parts D7 through D12 in the same way.



④ Fit both arms to the completed body.



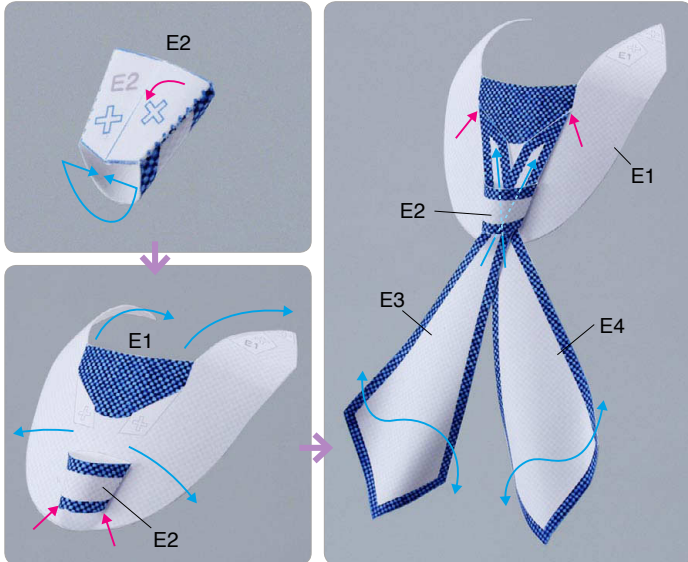
⑤ Fit the head to the body, and attach the mouth.



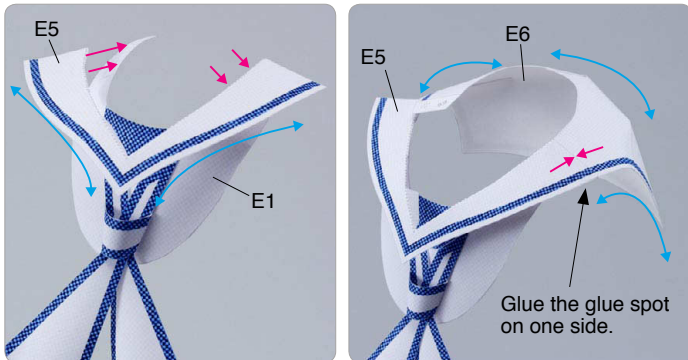
## E Assemble the item

Use patterns: Page9.

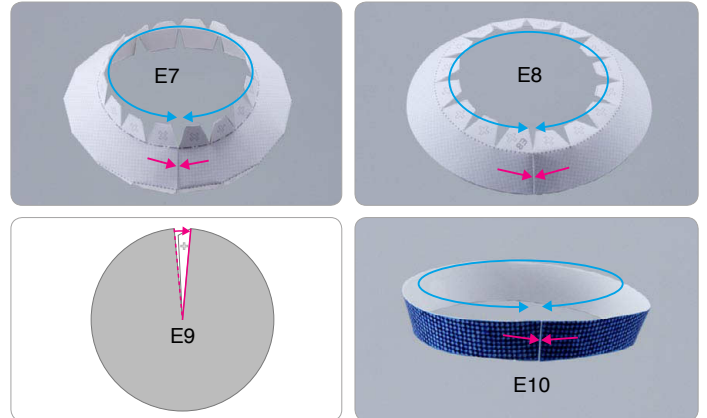
- ① Assemble E2 and stick it onto E1. Then, curl E3 and E4, pass them through the loop at E2 and then stick onto E1.



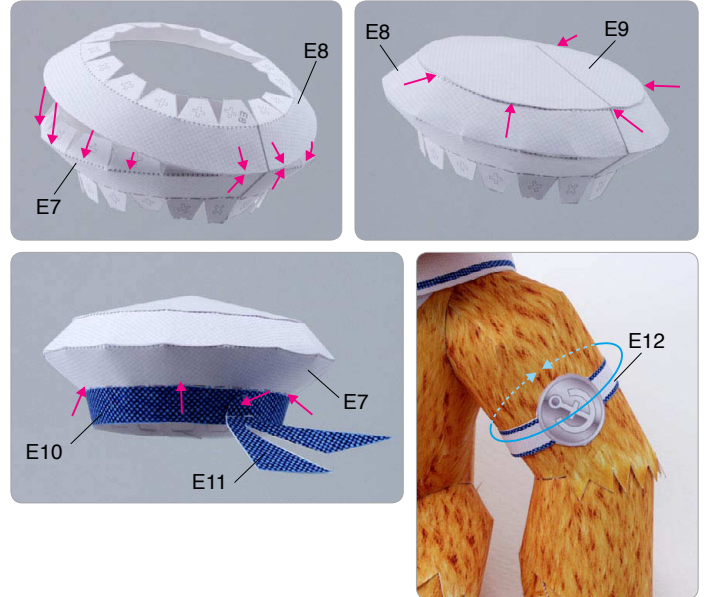
- ② Attach E1 and E5 together. Then, attach E5 and E6 together, wrap the assembly around the teddy bear's neck and secure with glue.



- ③ Assemble parts E7 through E10.



- ④ Assemble parts E7 through E11. Then, wrap E12 around the teddy bear's arm.



- ⑤ Complete!



◆ Try posing your teddy bear by moving its head, arms and legs.