



Assembly Instructions

1. Carefully cut out the parts.
2. Fold along the dotted lines, making mountain or valley folds as indicated.
3. Attach the glue spots on each part together.
4. Glue the parts together, and you're done!

*Please read the Assembly Instructions carefully before you begin.

Tools

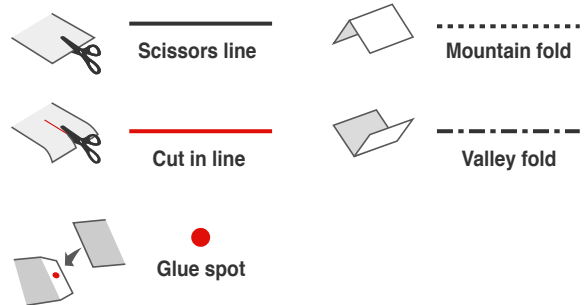
Scissors, Glue (We recommend quick-drying paper glue.)

How to assemble your model neatly

Scoring along the fold lines in advance with a dried up pen or a ruler with slightly sharp corners will result in a neater model.

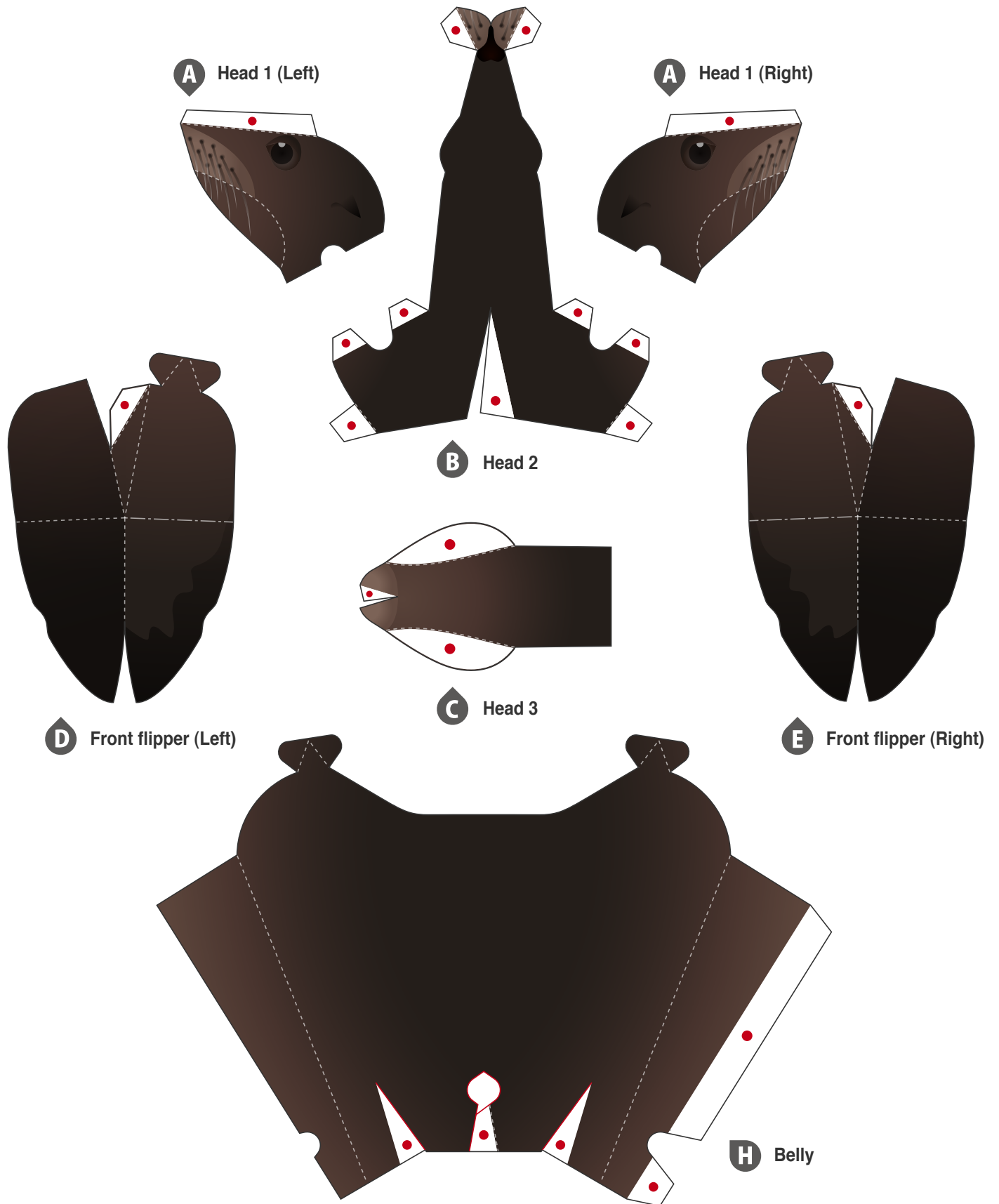
*Be careful not to press too hard as the paper may tear.

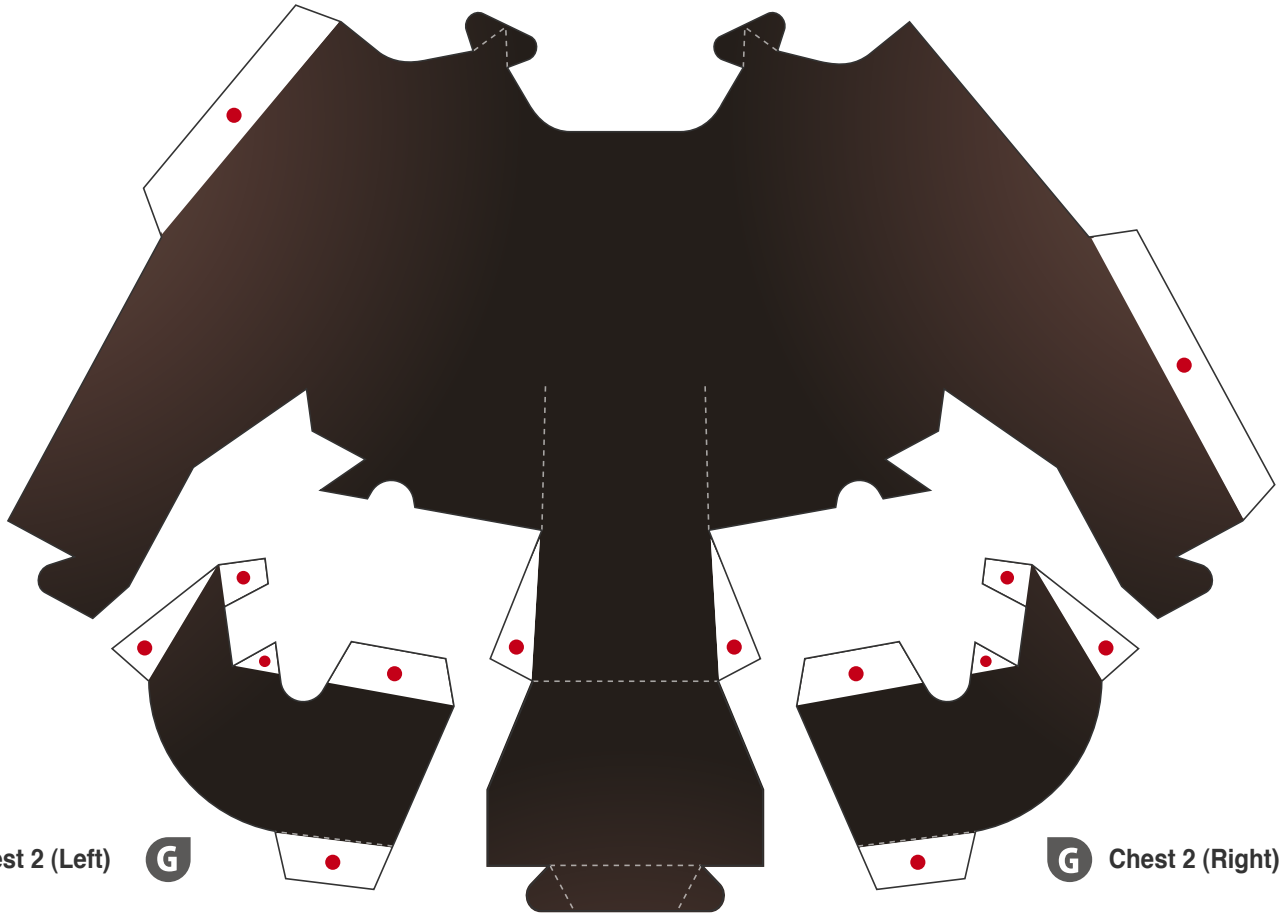
Notation Key



Caution

Keep scissors and glue away from small children. Be careful not to cut your fingers when using scissors.





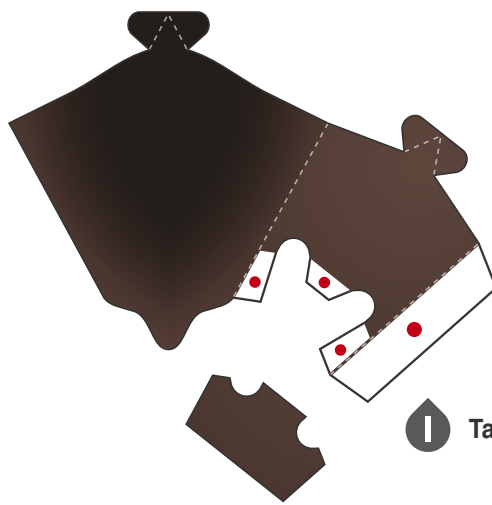
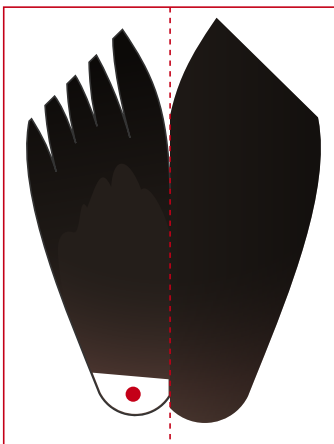
Chest 2 (Left) **G**

Chest 2 (Right) **G**

Chest 1 **F**

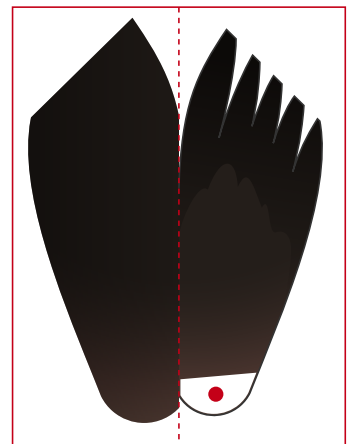
Back flipper 1 (Left) **K**

Back flipper 1 (Right) **M**



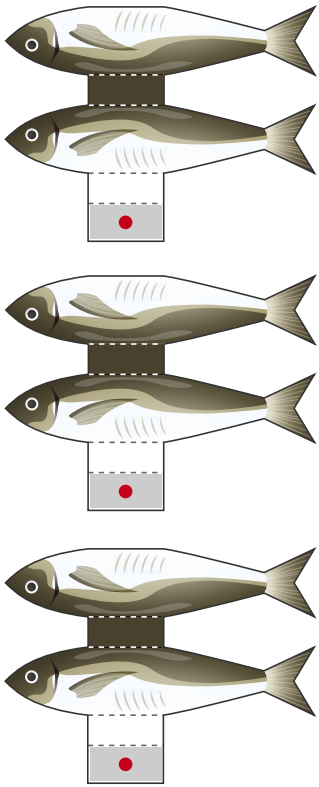
Tail 1 **I**

Tail 2 **J**

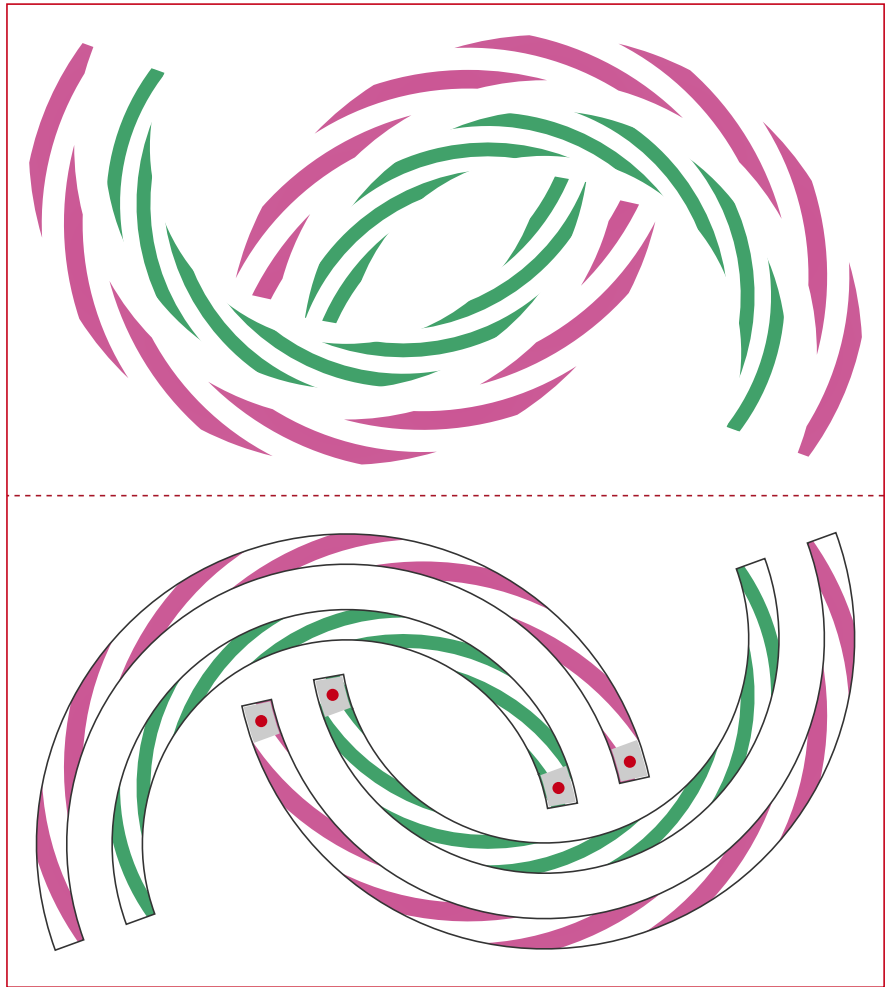


Back flipper 2 (Left) **L**

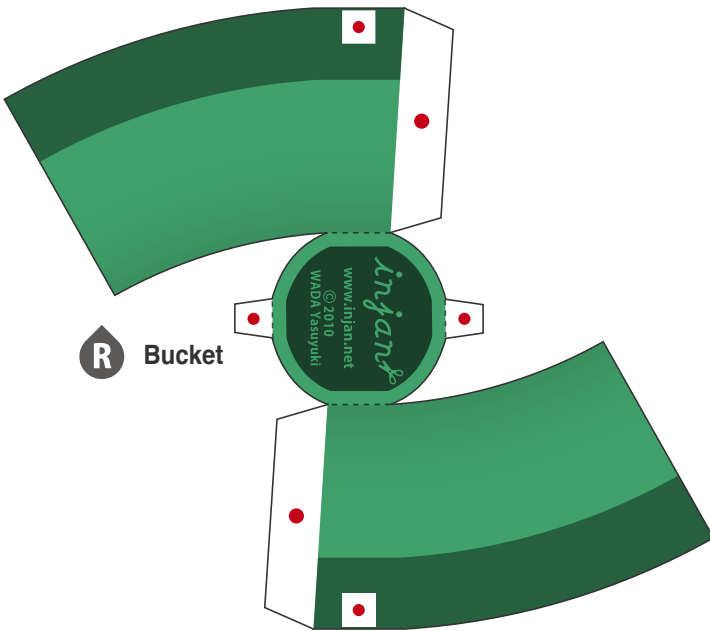
Back flipper 2 (Right) **N**



Q Sea lion's food



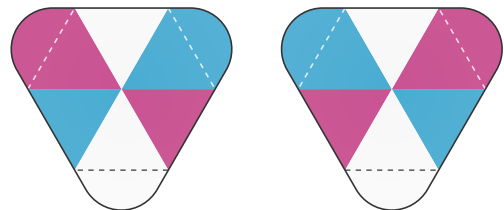
T Hula hoop



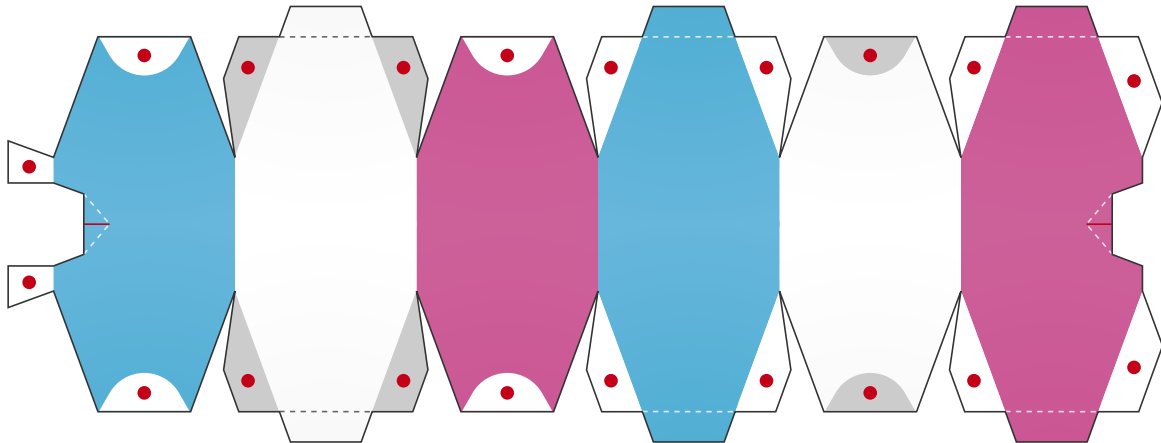
R Bucket



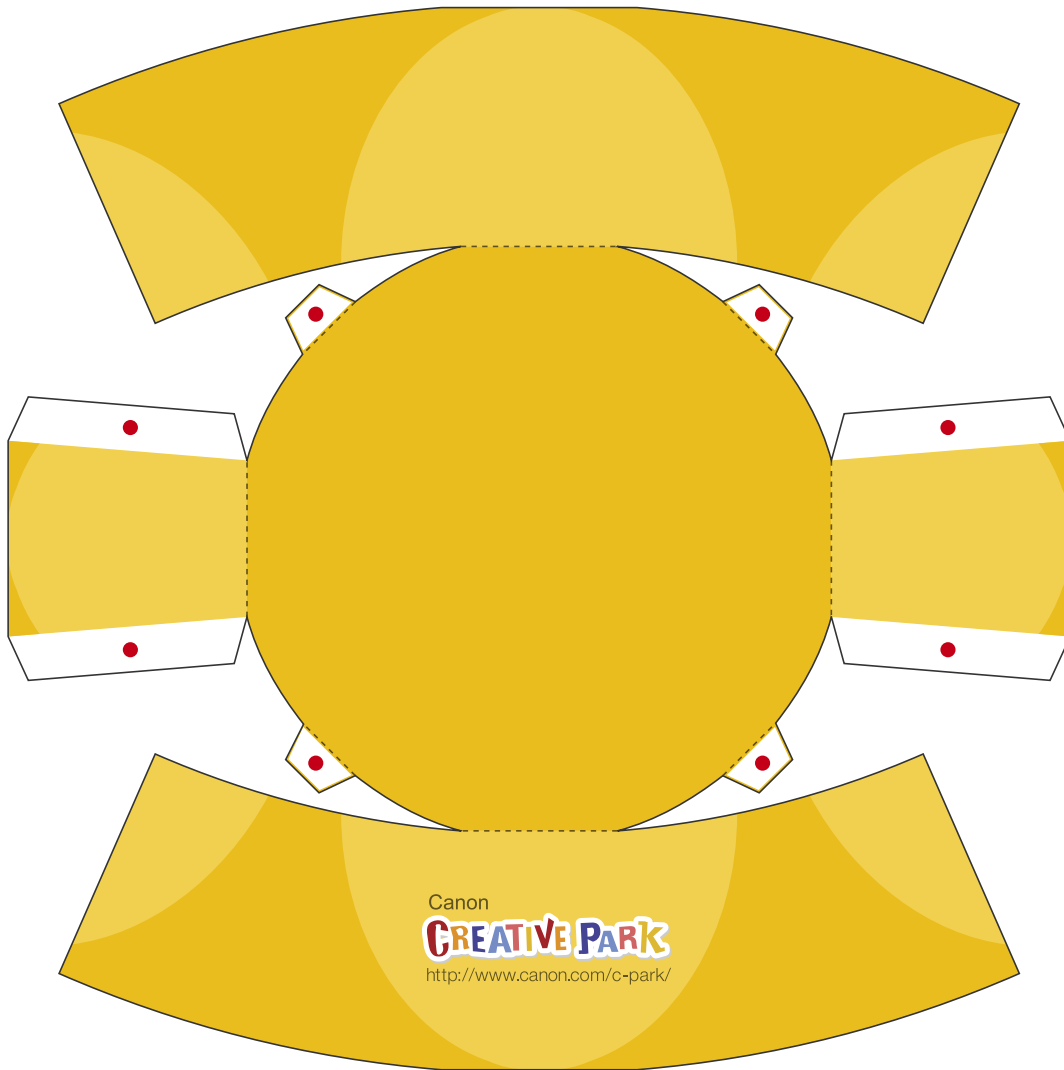
S Bucket handle



P Ball 2



0 Ball 1



U Platform