

Moving Copernican System: Pattern

PAPER CRAFT

<http://www.canon.com/c-park/en/>



View of completed model

Moving Copernican System

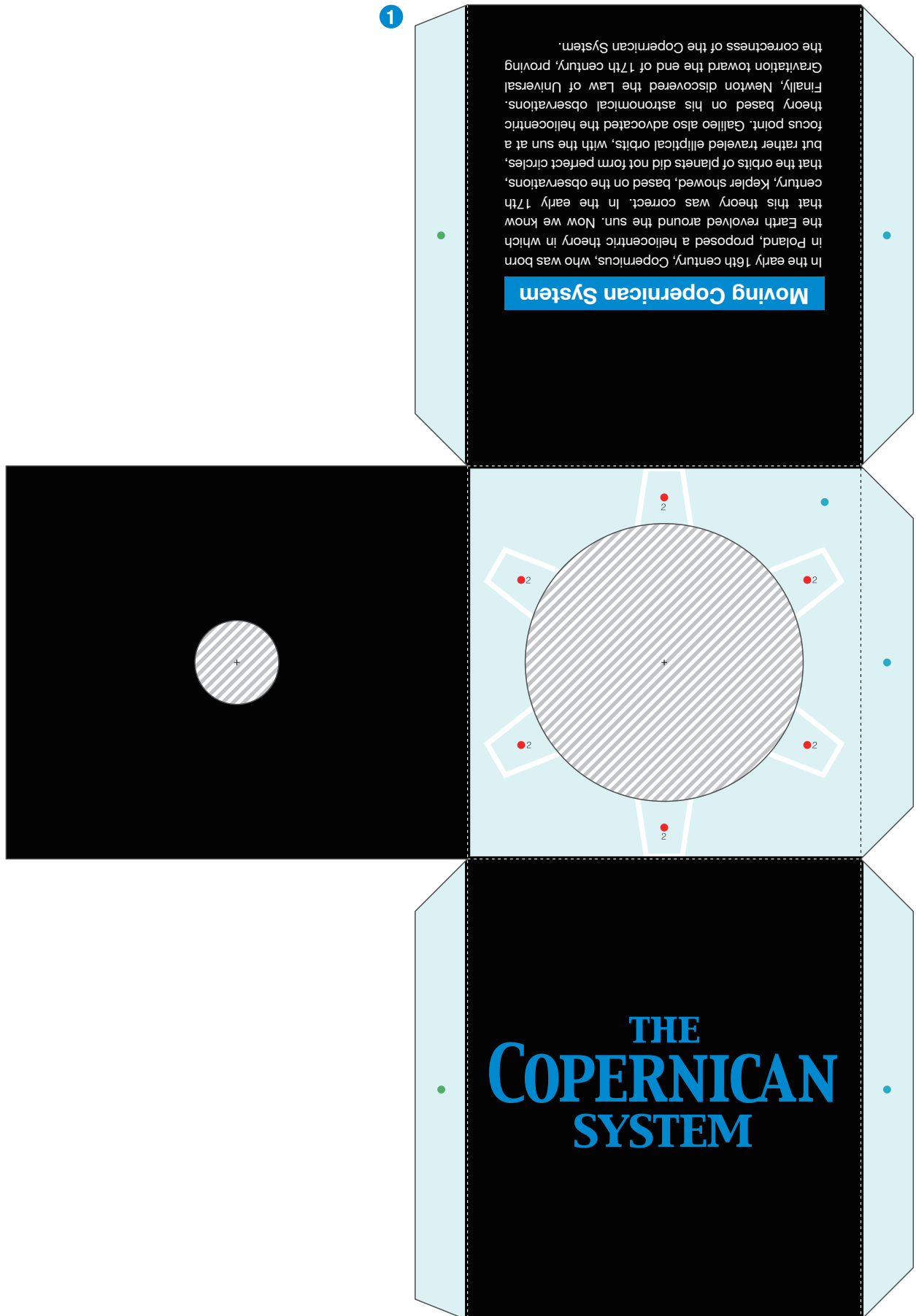
Editor:  THE NATIONAL SCIENCE MUSEUM
国立科学博物館

In the early 16th century, Copernicus, who was born in Poland, proposed a heliocentric theory in which the Earth revolved around the sun. Now we know that this theory was correct. In the early 17th century, Kepler showed, based on the observations, that the orbits of planets did not form perfect circles, but rather traveled elliptical orbits, with the sun at a focus point. Galileo also advocated the heliocentric theory based on his astronomical observations. Finally, Newton discovered the Law of Universal Gravitation toward the end of 17th century, proving the correctness of the Copernican System.

■ Parts list(pattern):Seven A4 sheets(No.1 to No.7)

■ No. of Parts:31

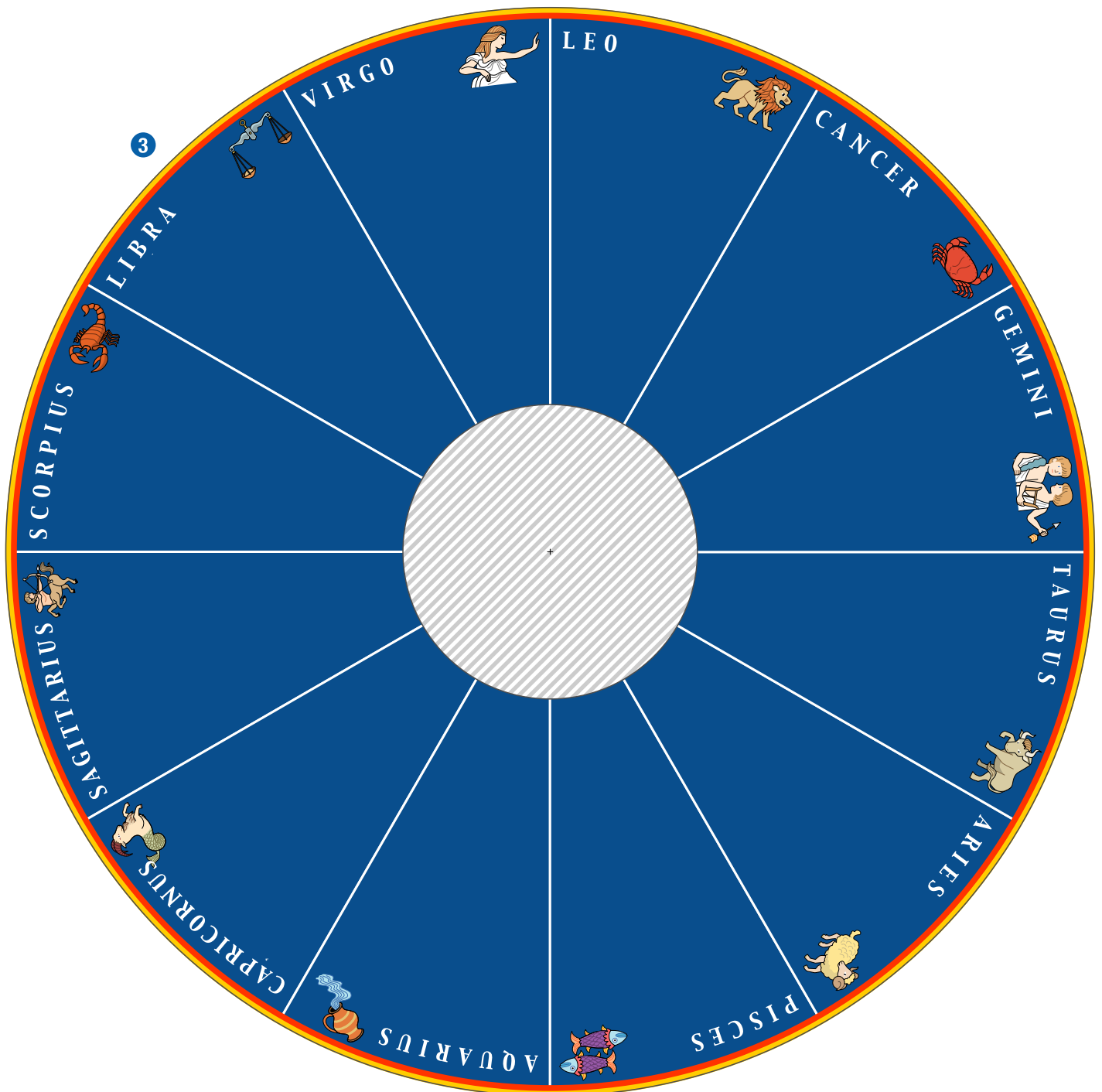
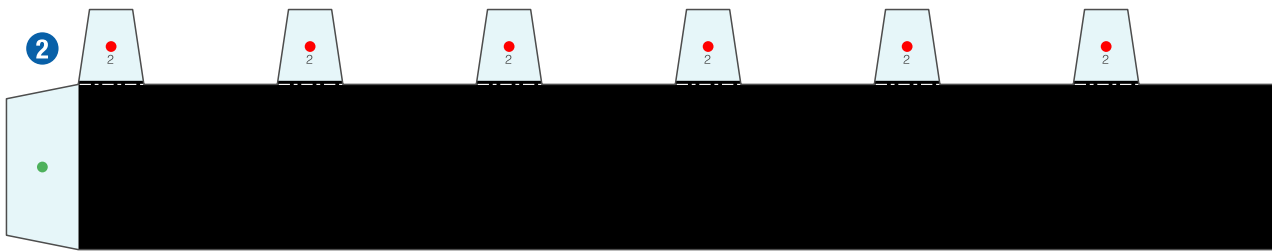
* Build the model by carefully reading the Assembly Instructions, in the parts sheet page order.



Moving Copernican System: Pattern

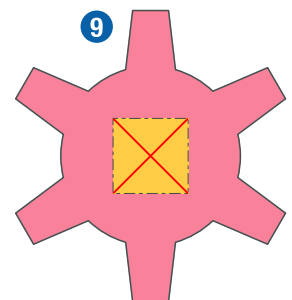
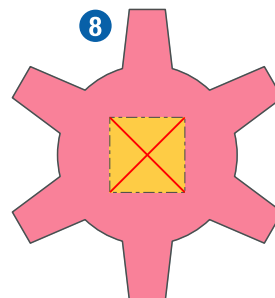
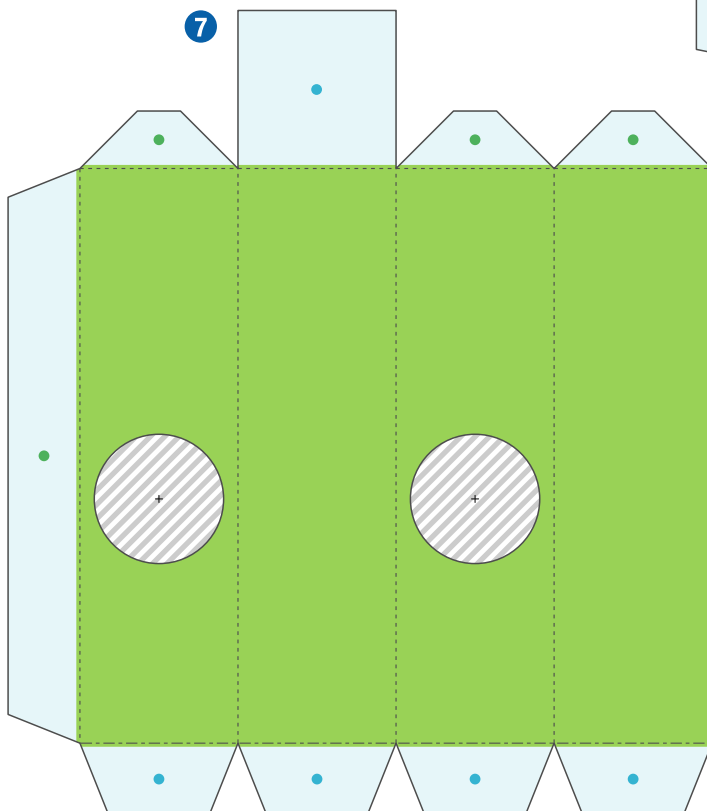
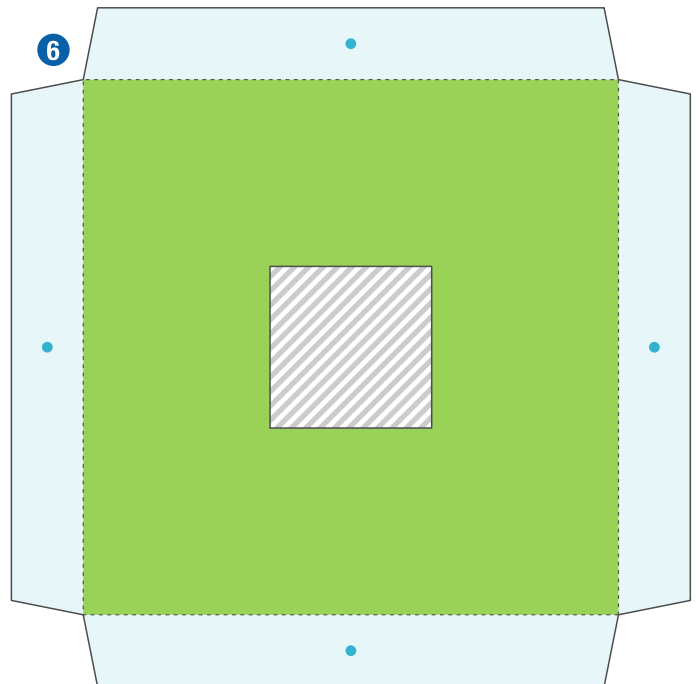
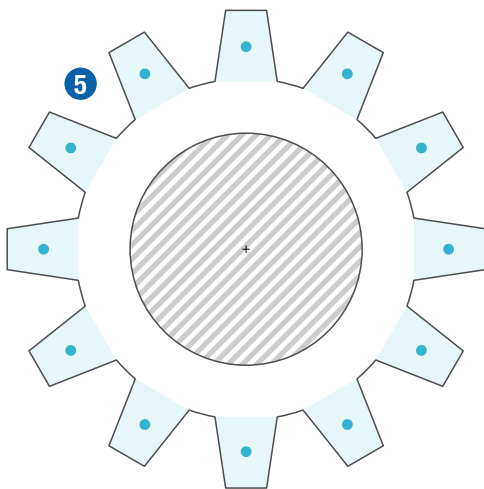
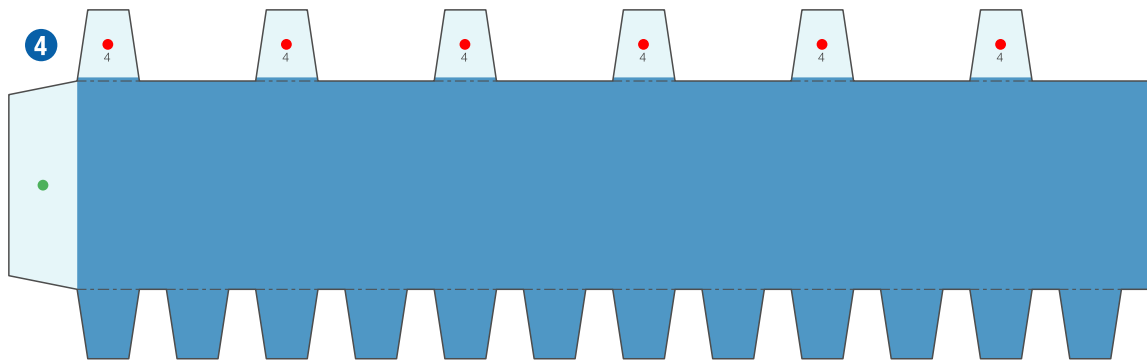


Canon ® is a registered trademark of Canon Inc. © Canon Inc. © Keisuke Saka



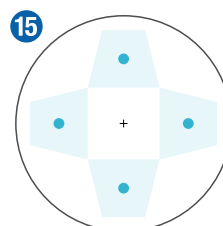
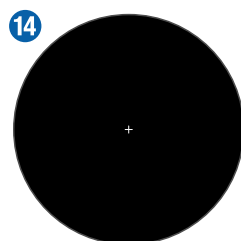
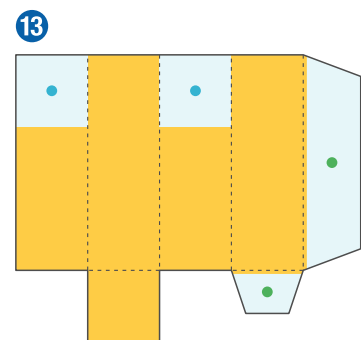
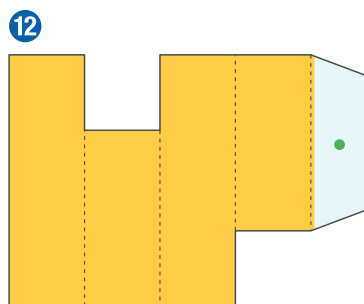
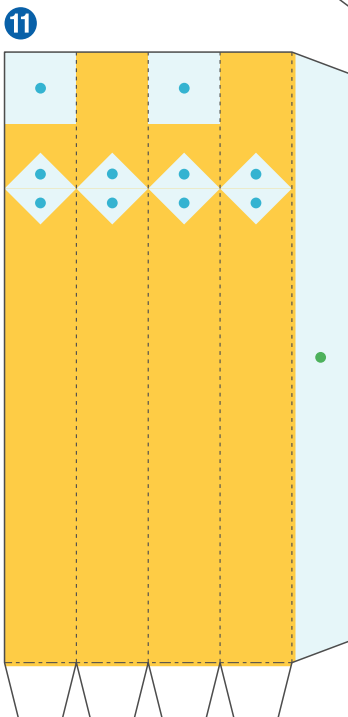
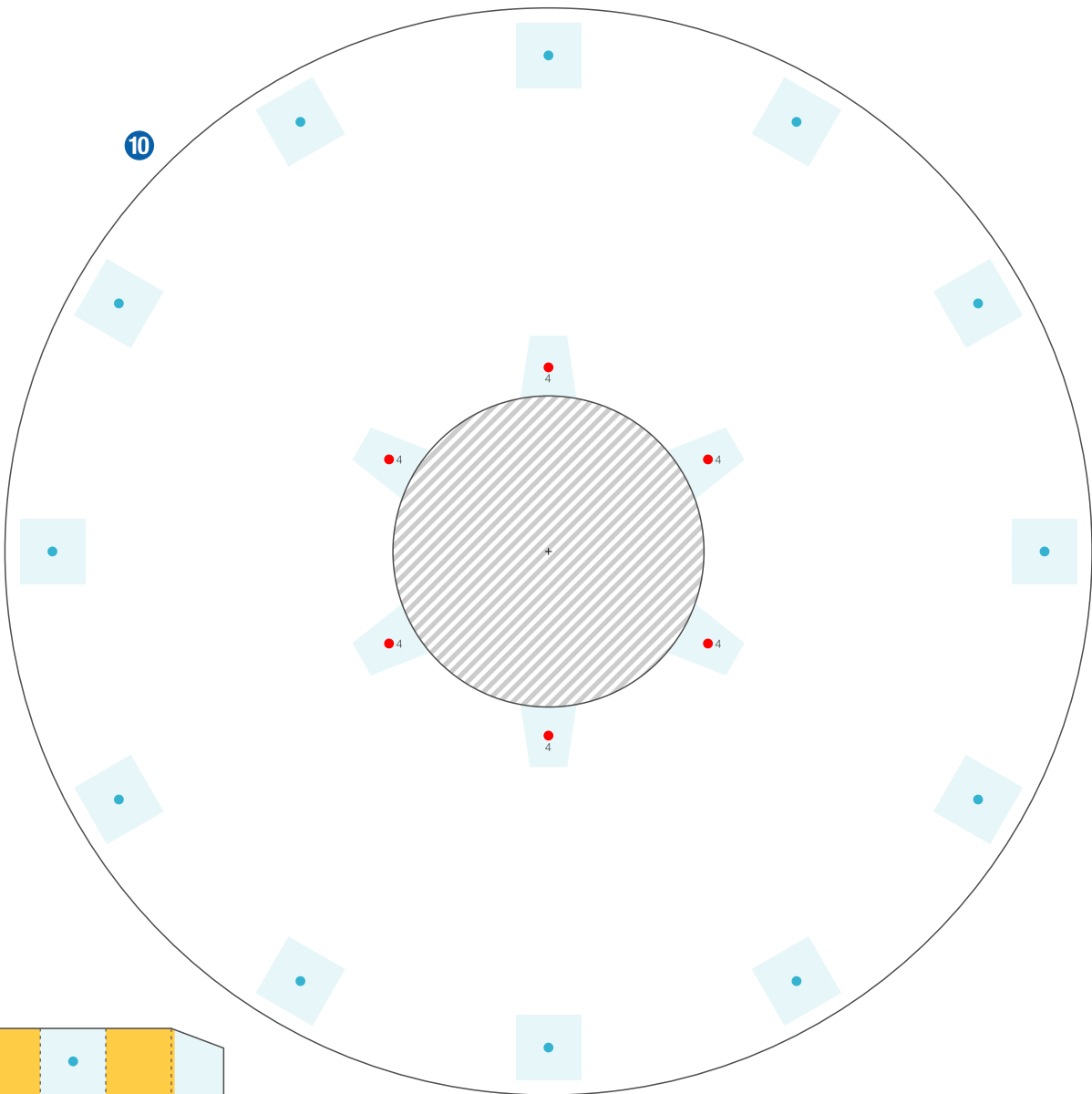
Moving Copernican System: Pattern

Canon ® is a registered trademark of Canon Inc. © Canon Inc. © Keisuke Saka



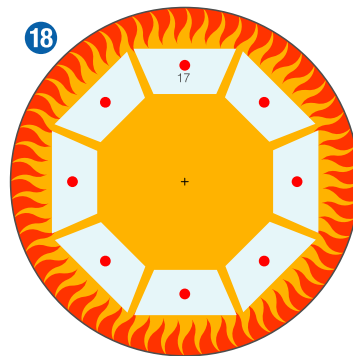
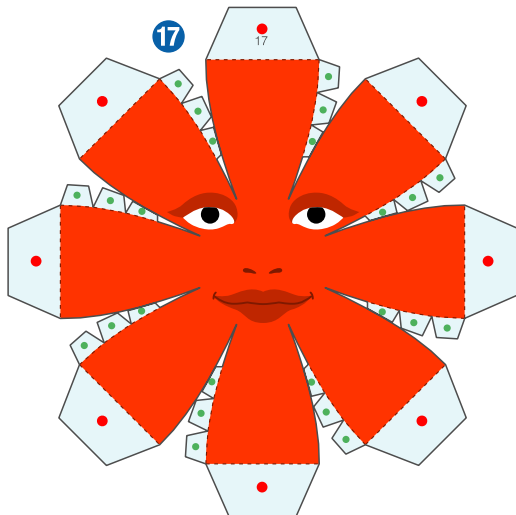
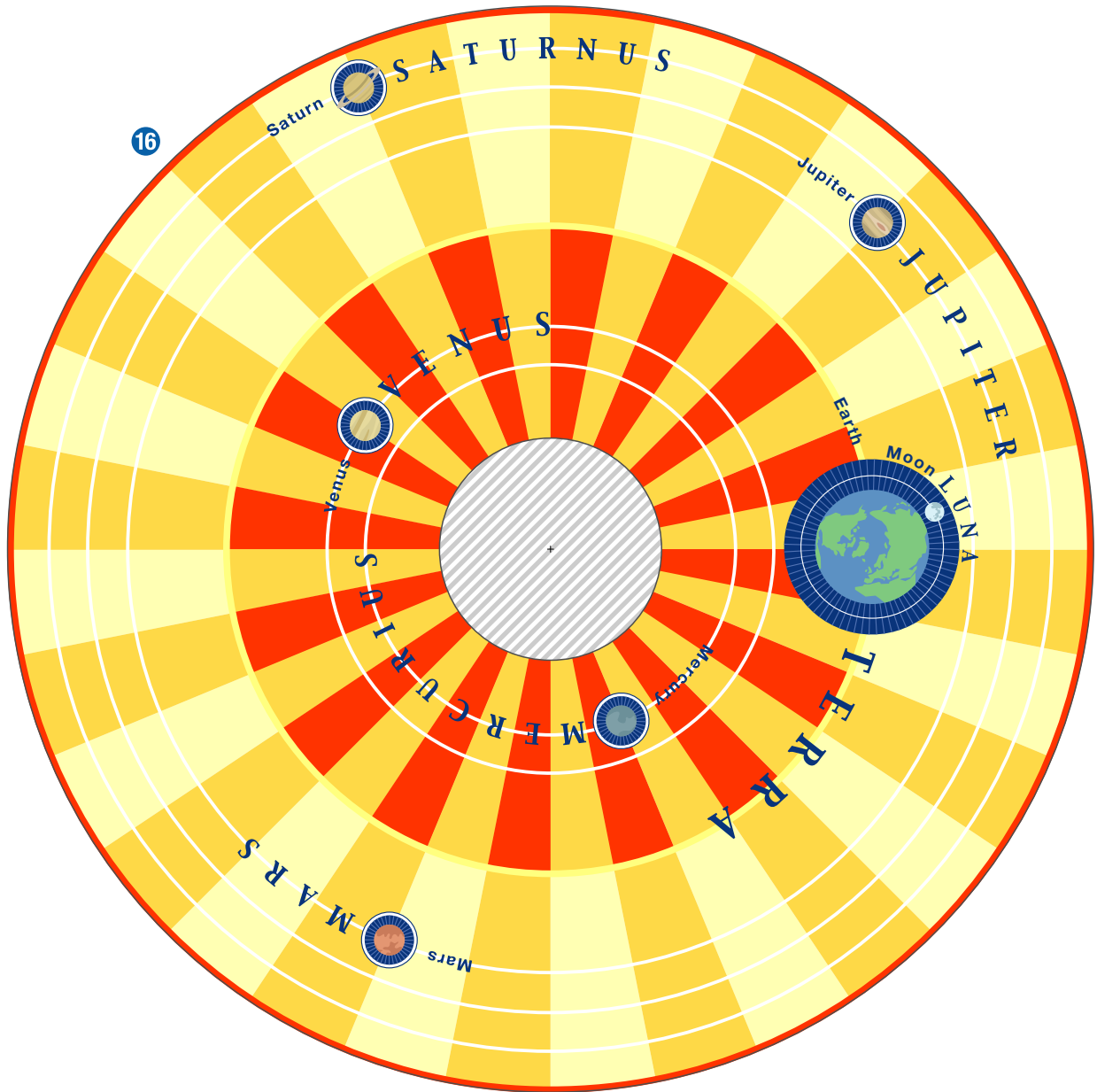
Moving Copernican System: Pattern

Canon ® is a registered trademark of Canon Inc. © Canon Inc. © Keisuke Saka



Moving Copernican System: Pattern

Canon ® is a registered trademark of Canon Inc. © Canon Inc. © Keisuke Saka



Moving Copernican System: Pattern



Canon ® is a registered trademark of Canon Inc. © Canon Inc. © Keisuke Saka

