

Moving Ptolemaic System: Pattern

PAPER CRAFT

<http://www.canon.com/c-park/en/>



Moving Ptolemaic System
the Ptolemaic system



Front



Side



Top

View of completed model

Moving Ptolemaic System

Editor:  THE NATIONAL SCIENCE MUSEUM
国立科学博物館

More than 1,800 years ago, the Greek astronomer Ptolemy from Alexandria proposed a cosmic structure called the Ptolemaic System in which Earth was stationary at the center of the cosmos, while the moon, the sun, planets, and stars revolved around it. This theory held sway for over 1,300 years but was eventually discredited due to various observations.

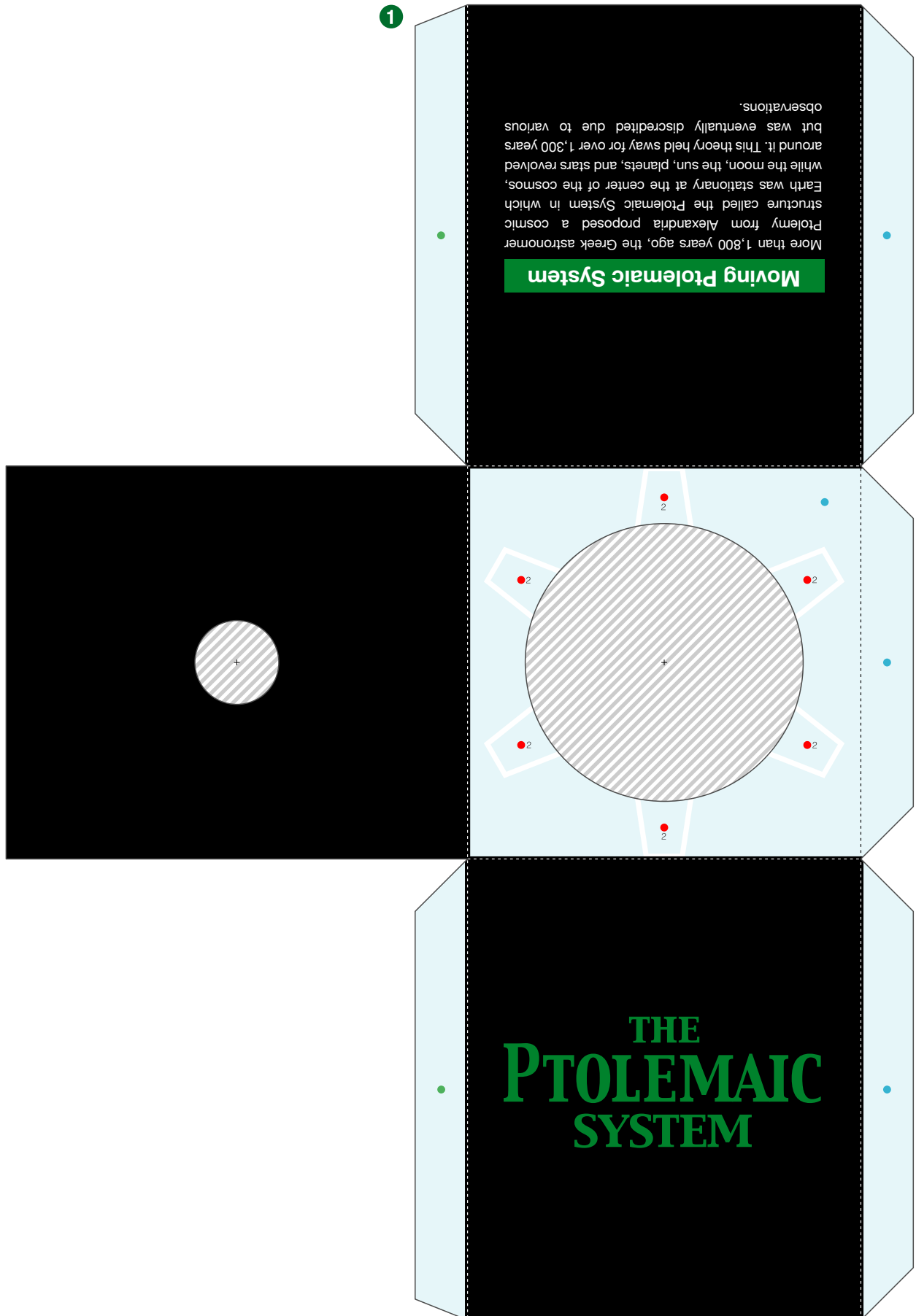
■ Parts list(pattern):Seven A4 sheets(No.1 to No.7)

■ No. of Parts:32

* Build the model by carefully reading the Assembly Instructions, in the parts sheet page order.

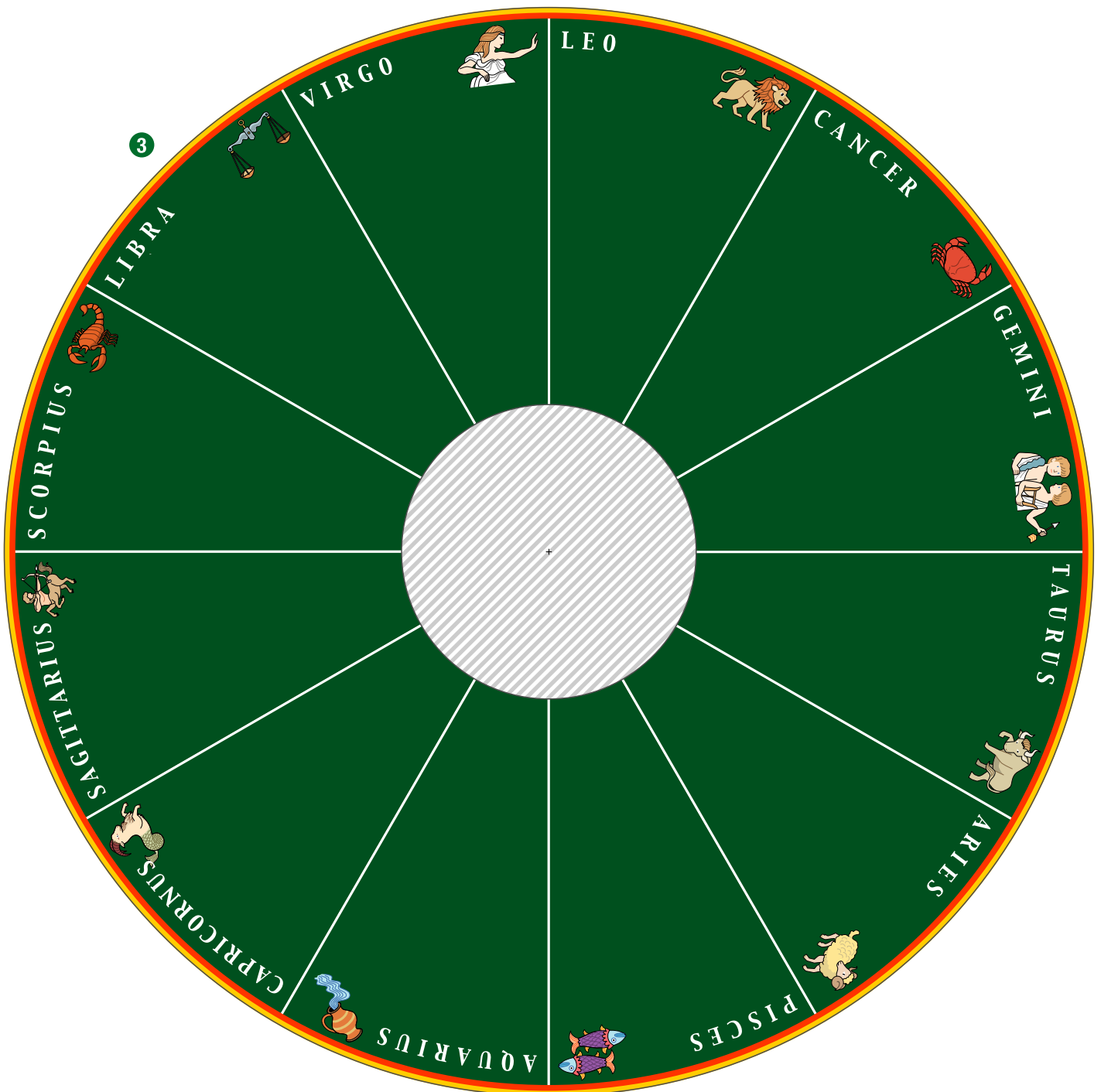
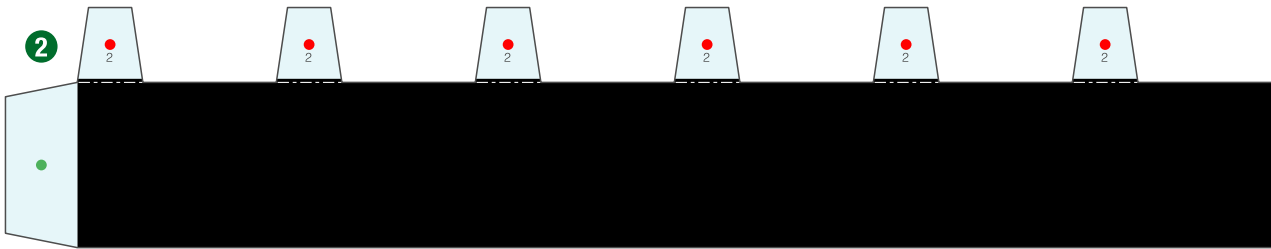
Moving Ptolemaic System: Pattern

Canon ® is a registered trademark of Canon Inc. © Canon Inc. © Keisuke Saka



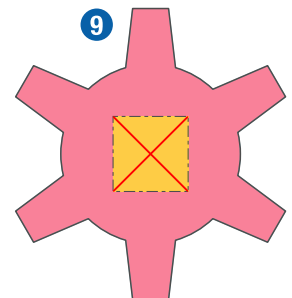
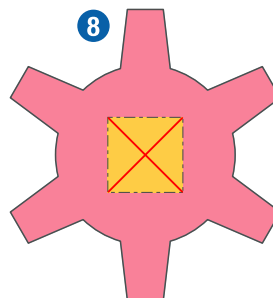
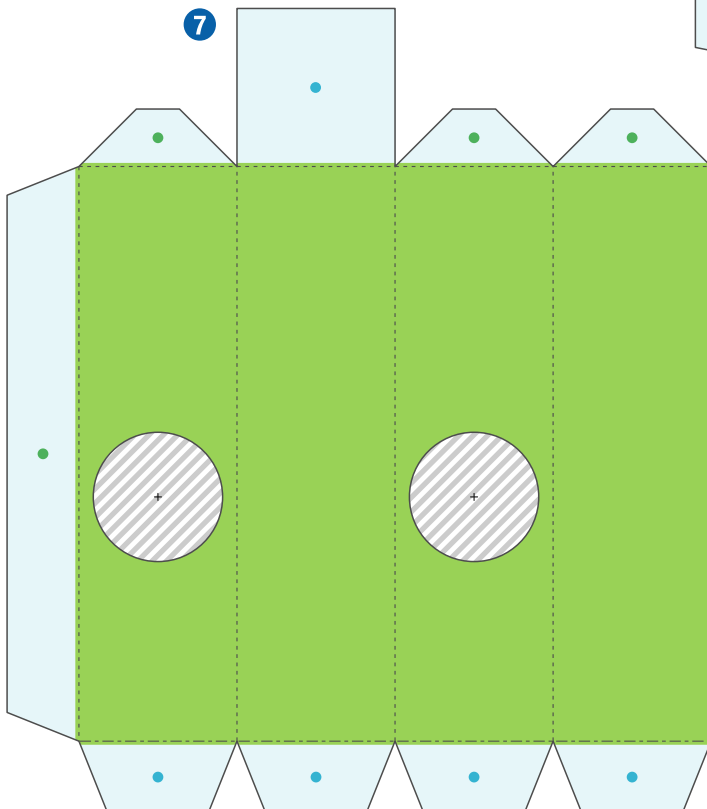
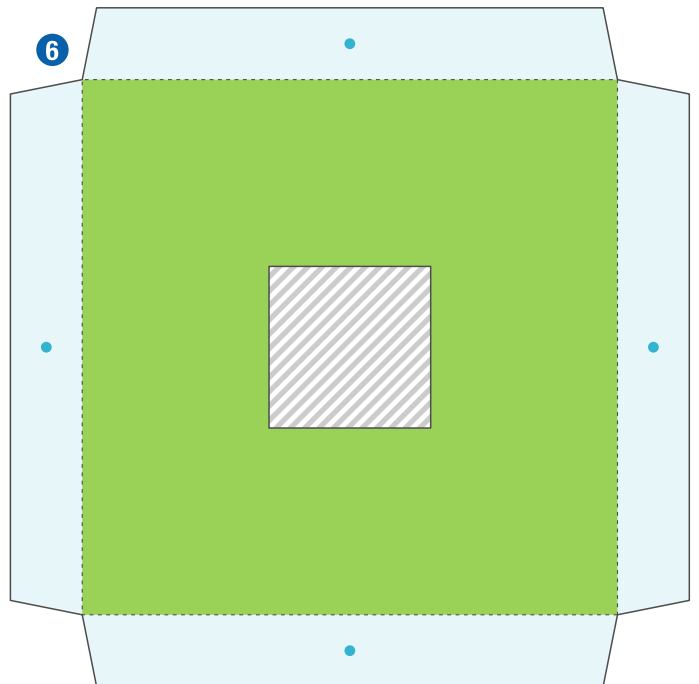
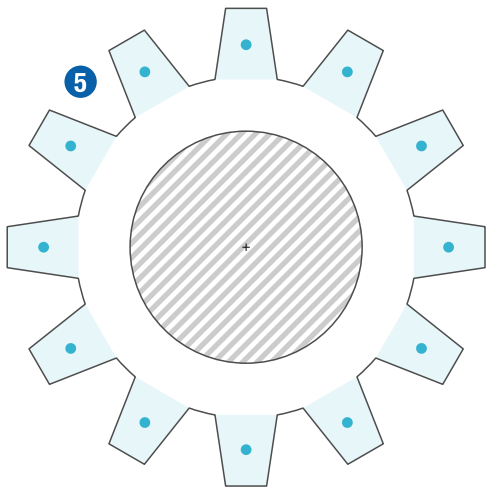
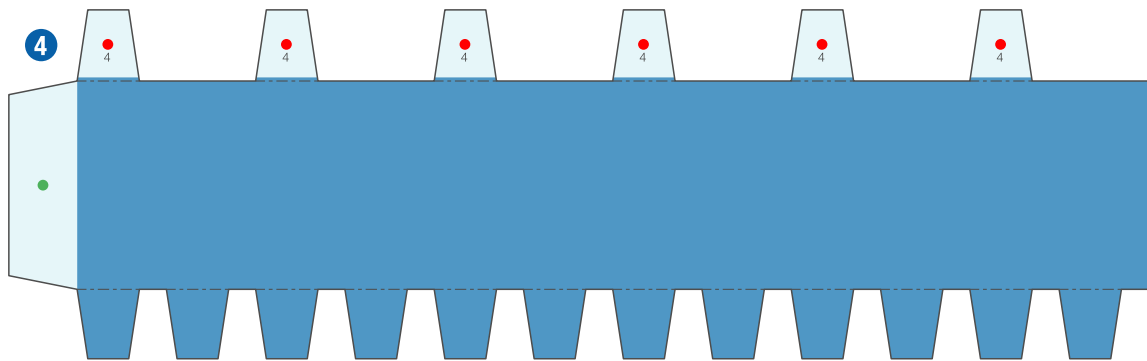
Moving Ptolemaic System: Pattern

Canon ® is a registered trademark of Canon Inc. © Canon Inc. © Keisuke Saka



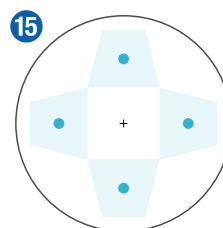
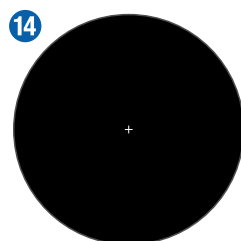
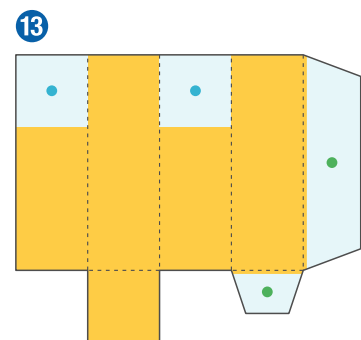
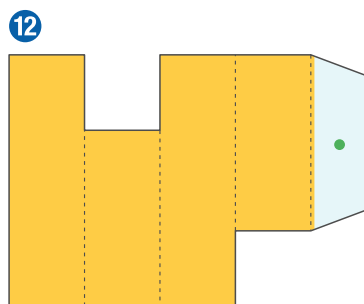
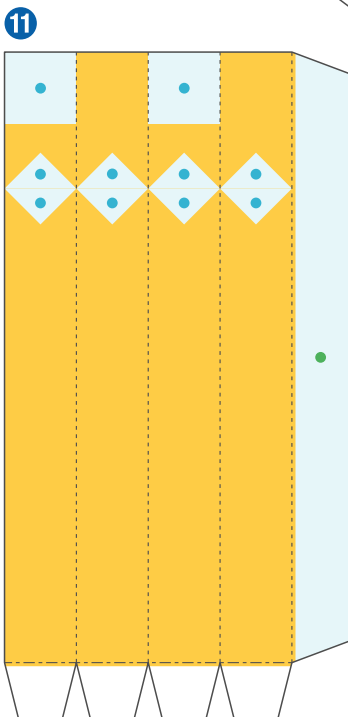
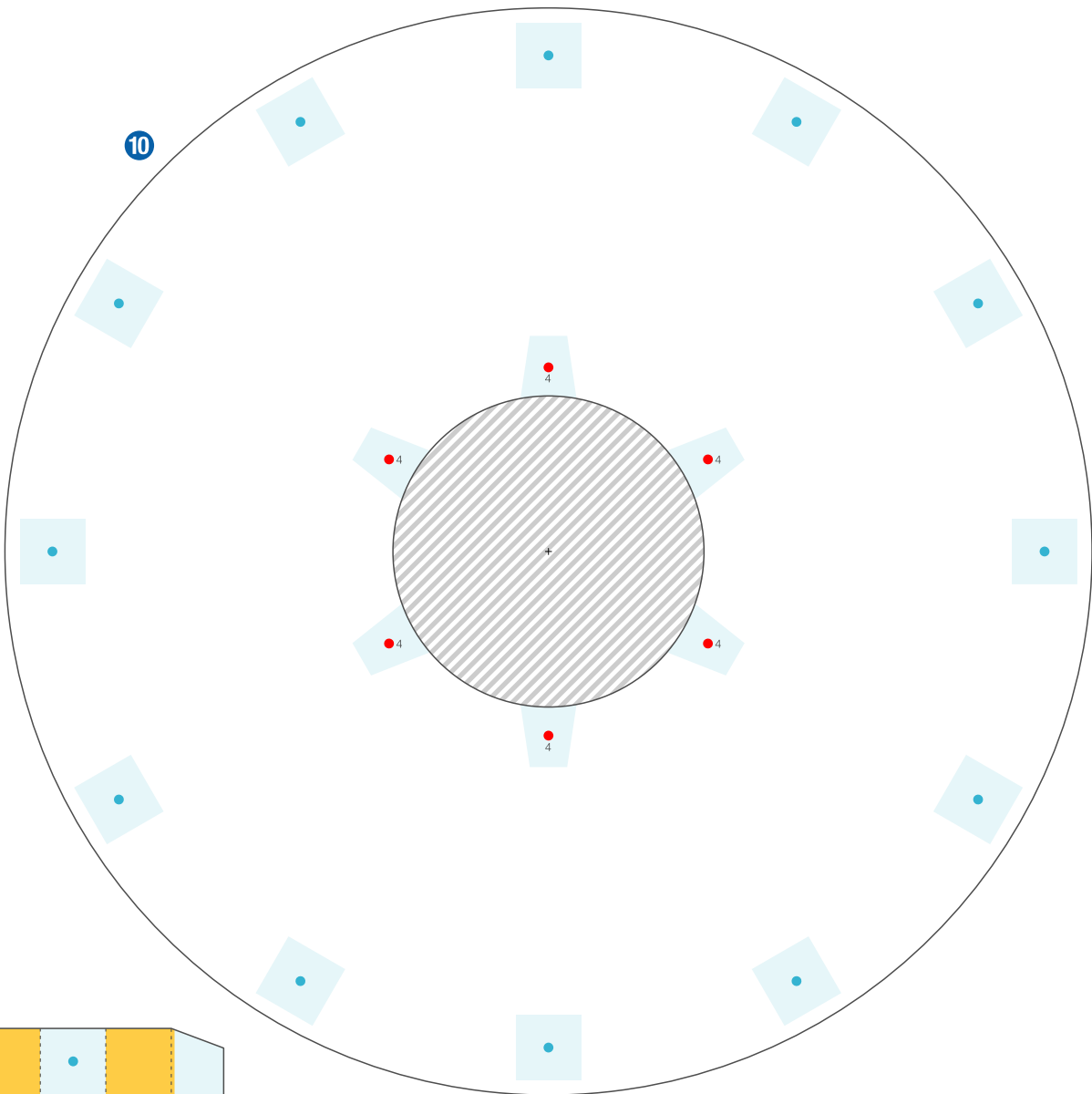
Moving Ptolemaic System: Pattern

Canon ® is a registered trademark of Canon Inc. © Canon Inc. © Keisuke Saka



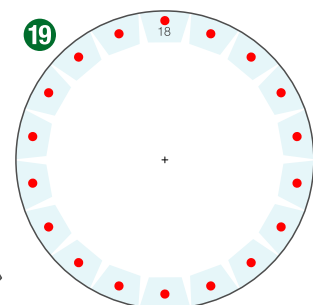
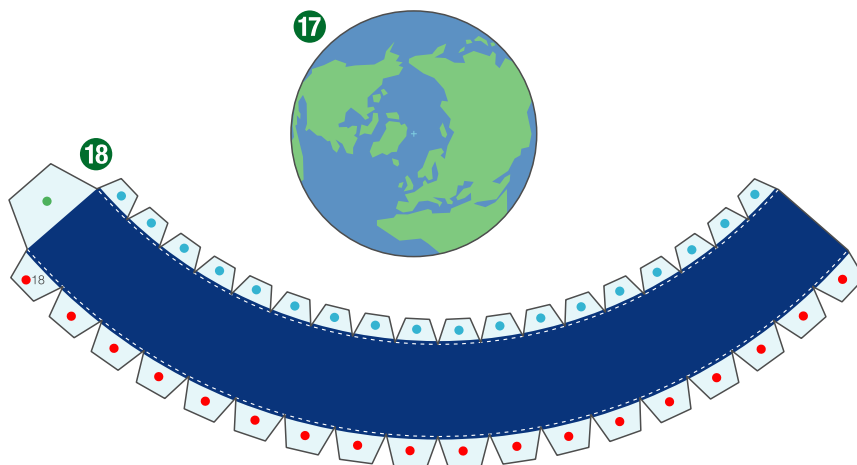
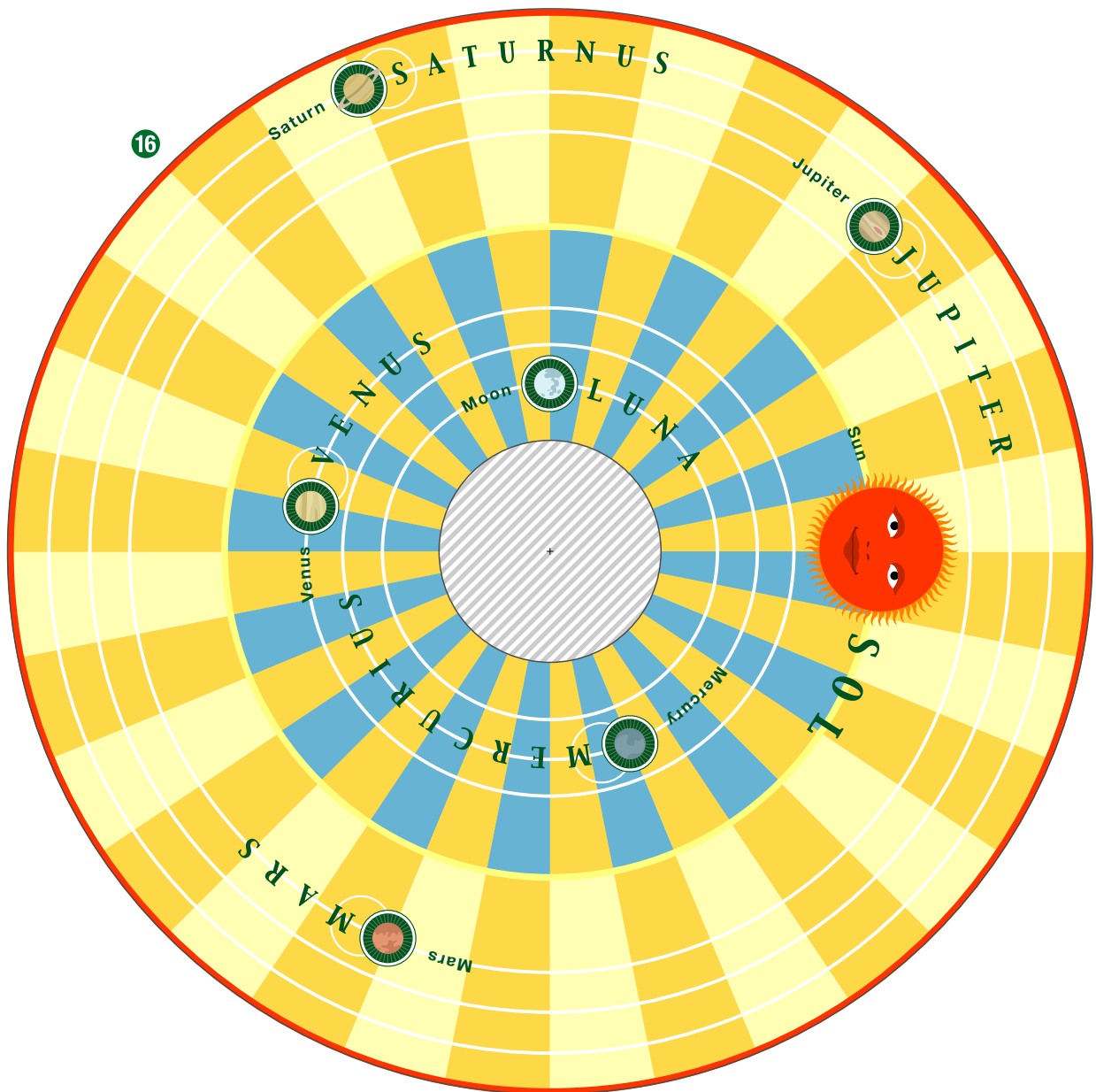
Moving Ptolemaic System: Pattern

Canon ® is a registered trademark of Canon Inc. © Canon Inc. © Keisuke Saka



Moving Ptolemaic System: Pattern

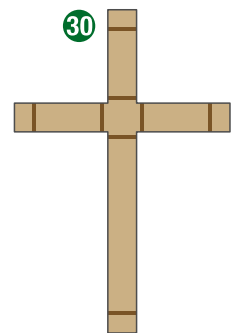
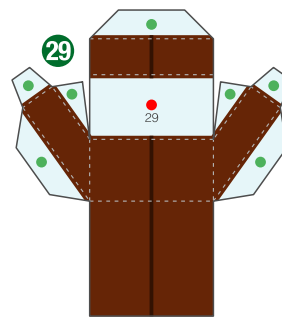
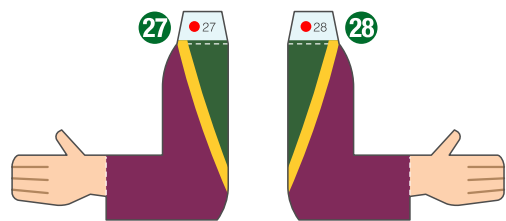
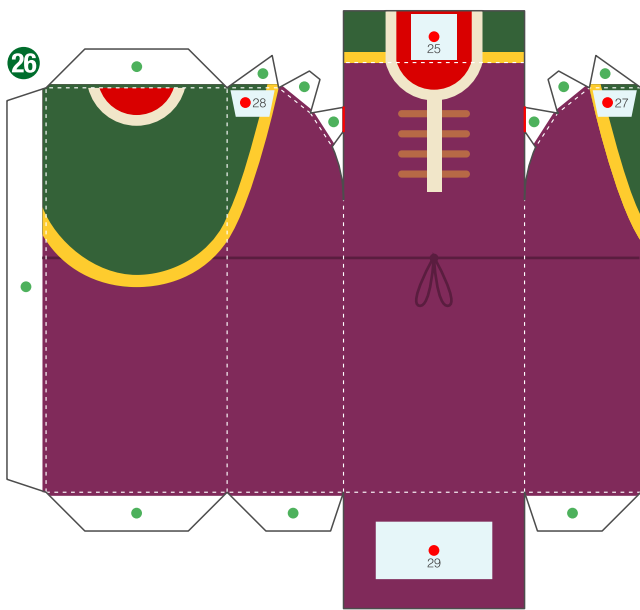
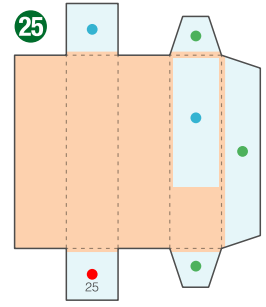
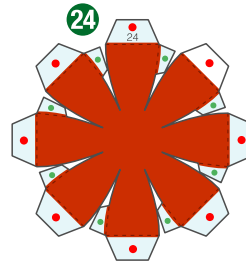
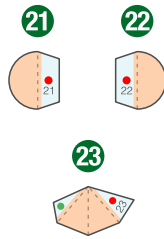
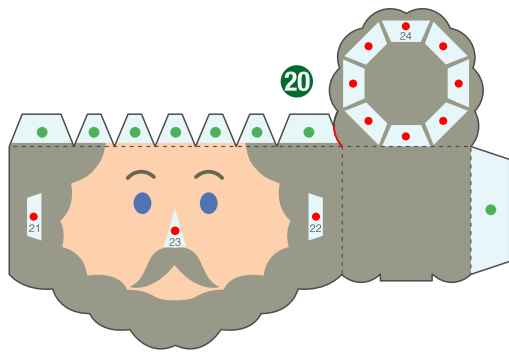
Canon ® is a registered trademark of Canon Inc. © Canon Inc. © Keisuke Saka



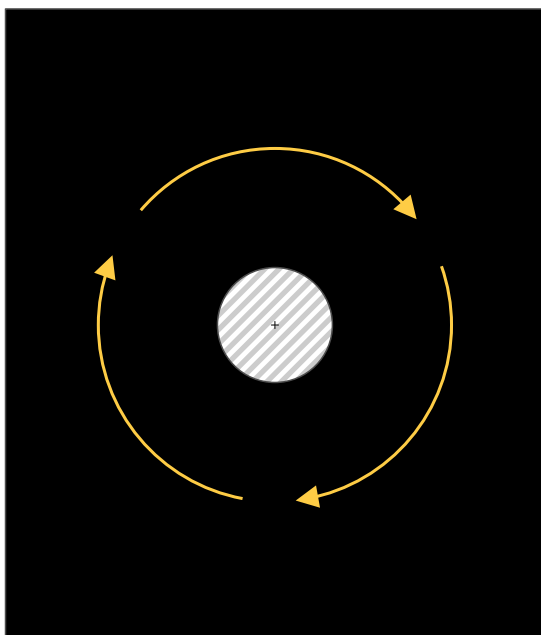
Moving Ptolemaic System: Pattern



Canon ® is a registered trademark of Canon Inc. © Canon Inc. © Keisuke Saka



31



32

