



You will need

Scissors, glue, a ruler, a used ball-point pen, tweezers

Explanation of symbols

- | | |
|-----------------------|-----------------|
| ----- Mountain fold | — Scissors line |
| - - - - - Valley fold | — Cut in line |
| | ● Glue tab |

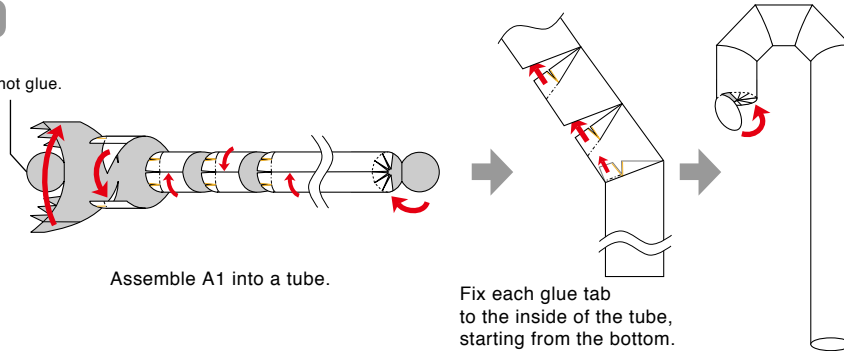
Assembly tip

Trace along the folds with a ruler and a used pen (no ink) to get a sharper, easier fold.

Caution: This craft requires the use of glue, scissors, and other tools which may be dangerous to young children. Please keep them out of reach of children while you work.

1

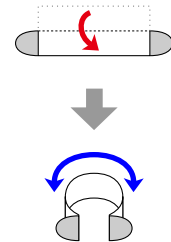
Do not glue.



Assemble A1 into a tube.

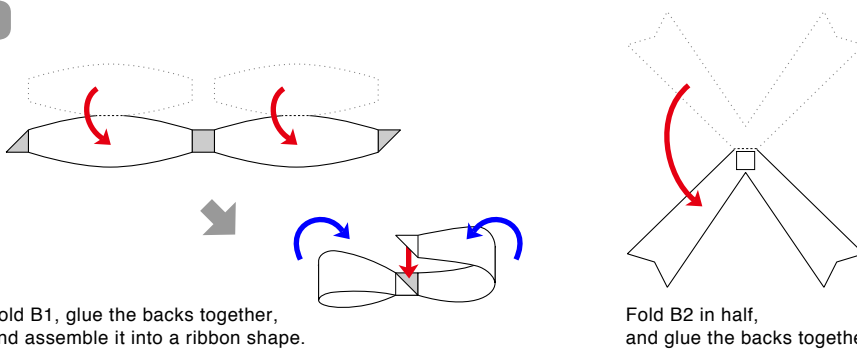
Fix each glue tab to the inside of the tube, starting from the bottom.

4



Fold A2, glue the backs together, and apply a curl.

2



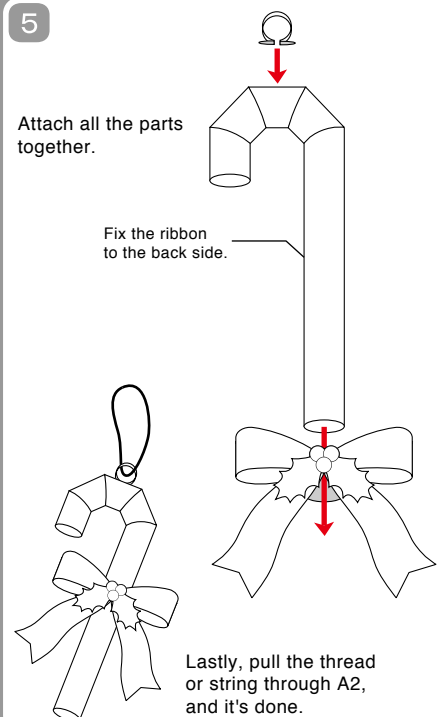
Fold B1, glue the backs together, and assemble it into a ribbon shape.

Fold B2 in half, and glue the backs together.

5

Attach all the parts together.

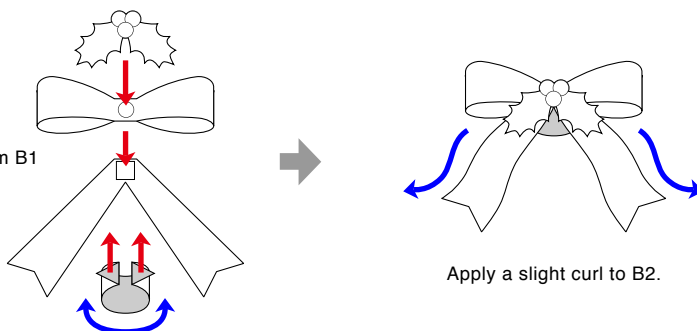
Fix the ribbon to the back side.



Lastly, pull the thread or string through A2, and it's done.

3

Attach parts from B1 to B4 together.



Apply a slight curl to B2.

