



#### You will need

Scissors, glue, a ruler, a used ball-point pen, tweezers

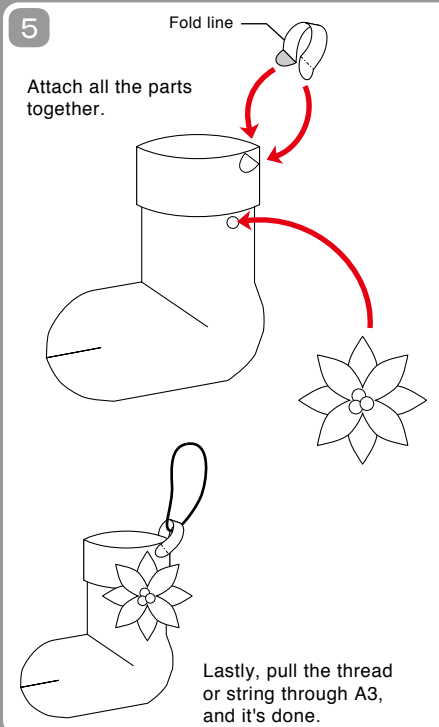
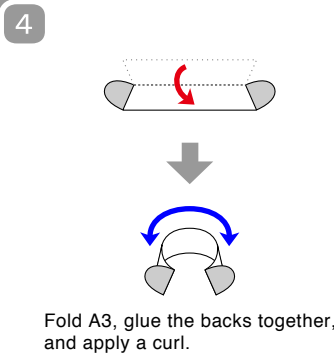
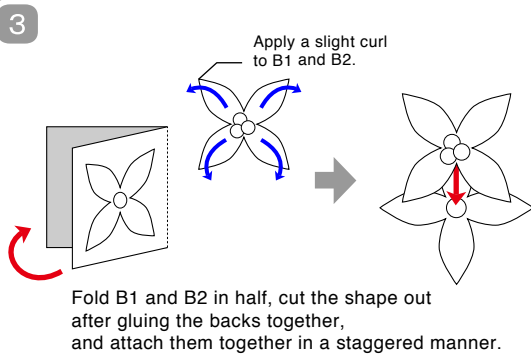
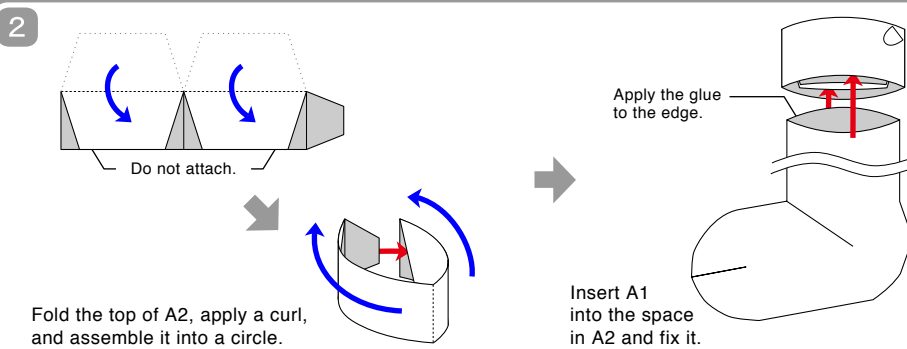
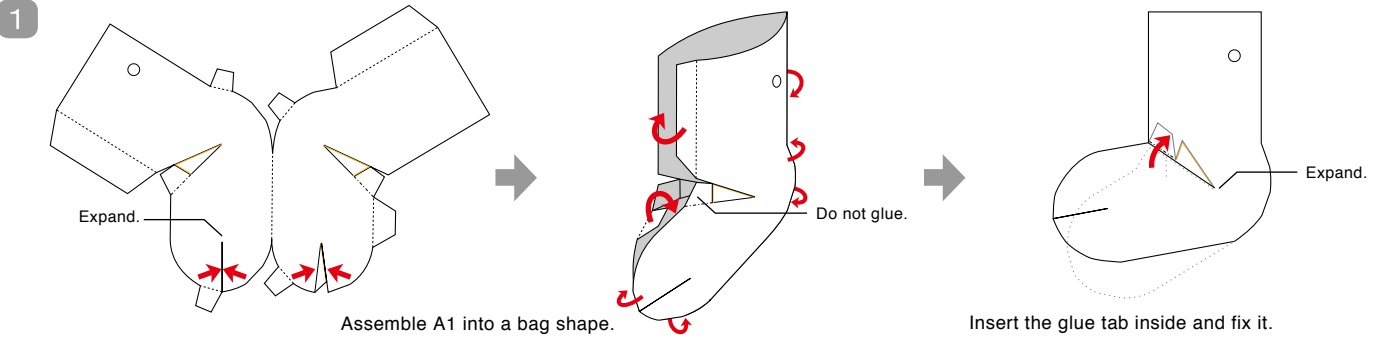
#### Explanation of symbols

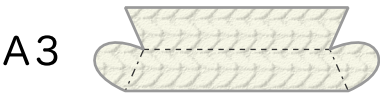
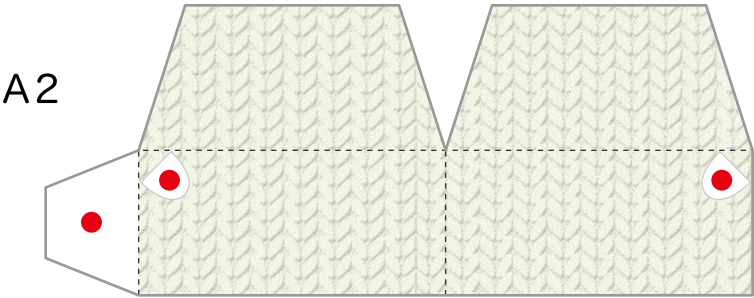
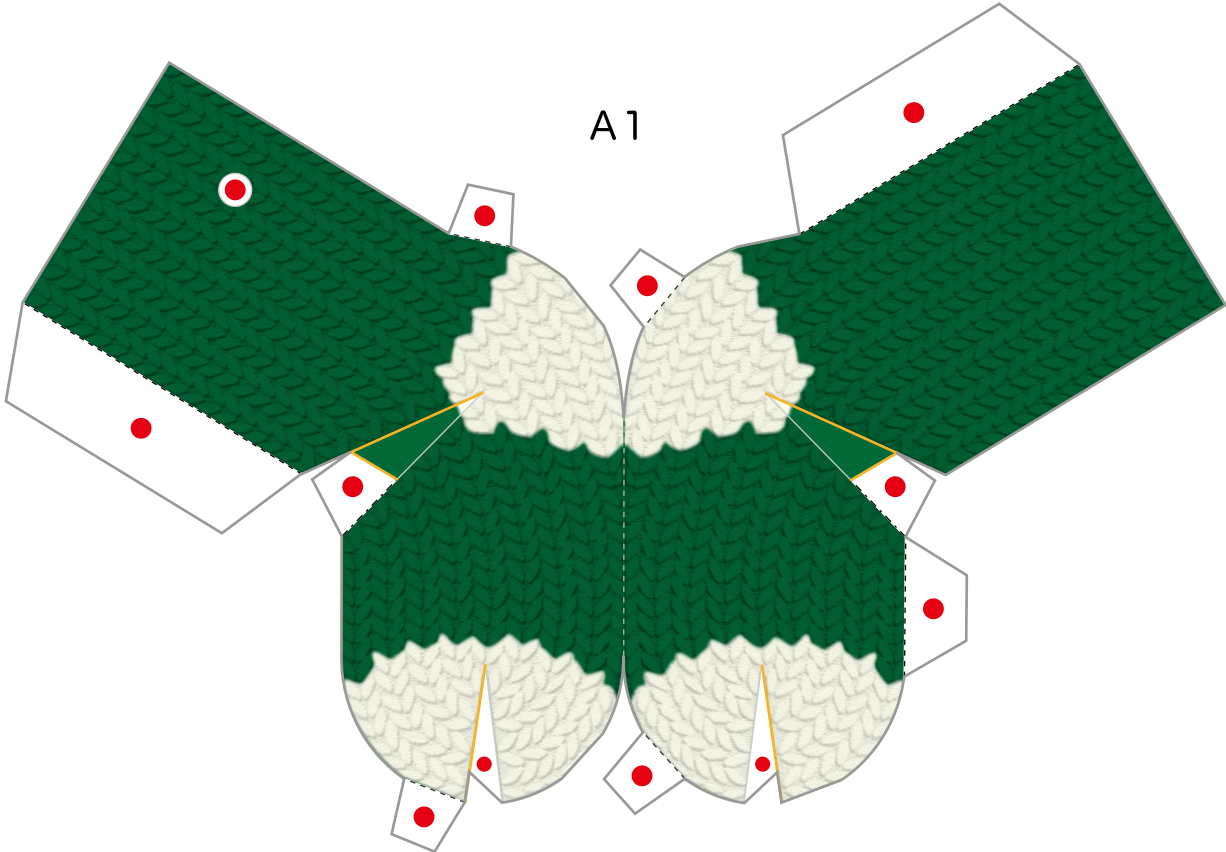
- |                       |                 |
|-----------------------|-----------------|
| ----- Mountain fold   | — Scissors line |
| - - - - - Valley fold | — Cut in line   |
|                       | ● Glue tab      |

#### Assembly tip

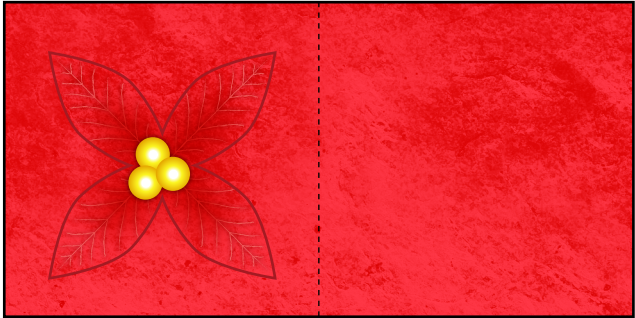
Trace along the folds with a ruler and a used pen (no ink) to get a sharper, easier fold.

**Caution:** This craft requires the use of glue, scissors, and other tools which may be dangerous to young children. Please keep them out of reach of children while you work.



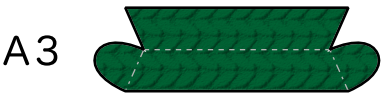
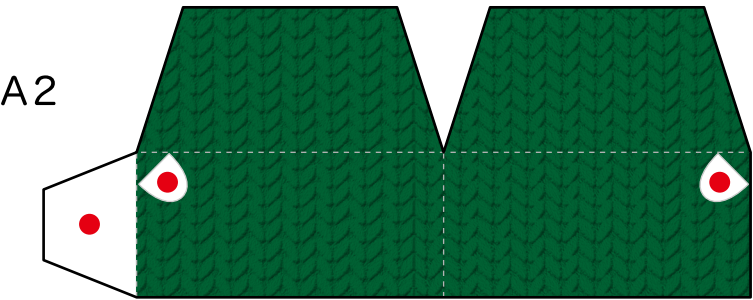
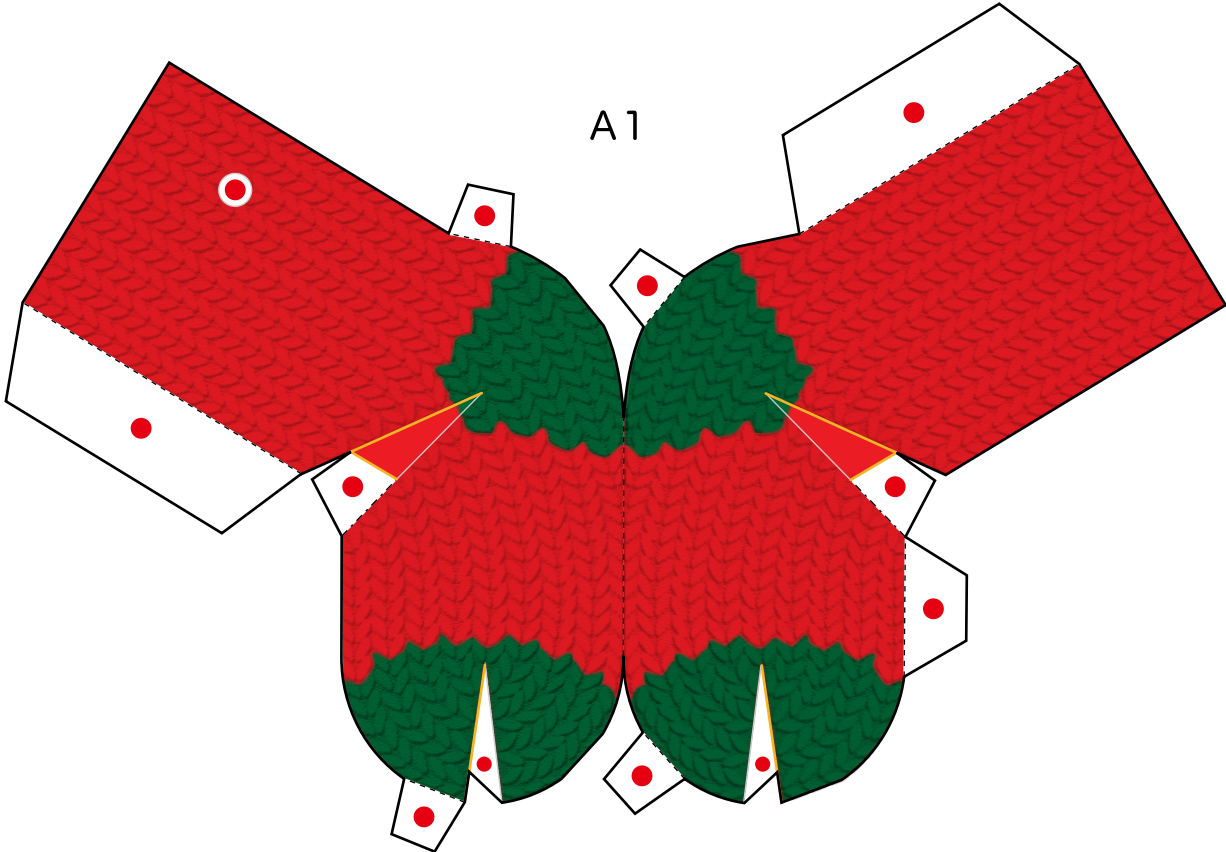


B1

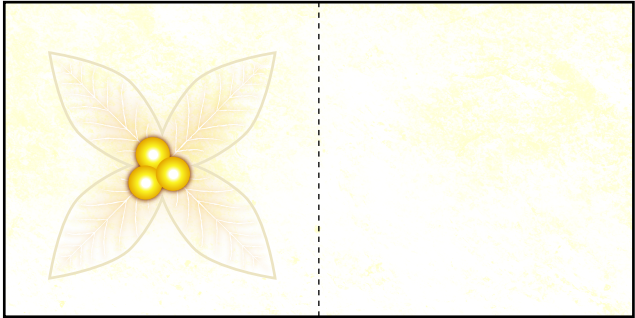


B2





B1



B2

