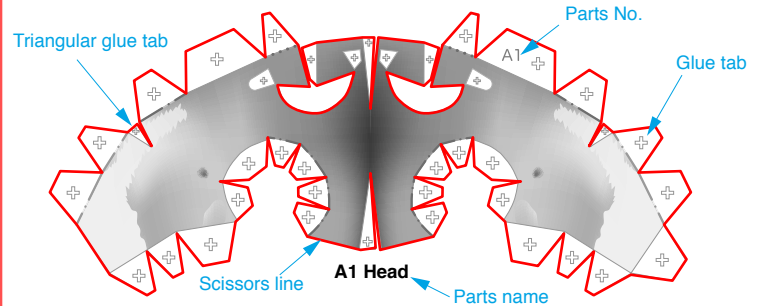


Assemble the head

Use pattern: Page2 .

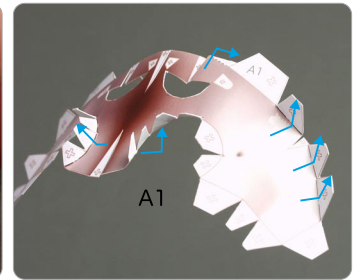
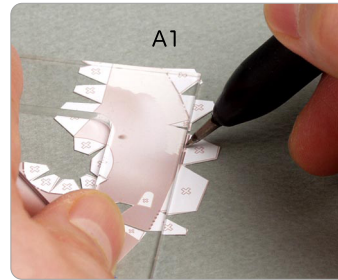
① Cut out A1 by cutting along the lines.

★ Cut along the line marked ———.



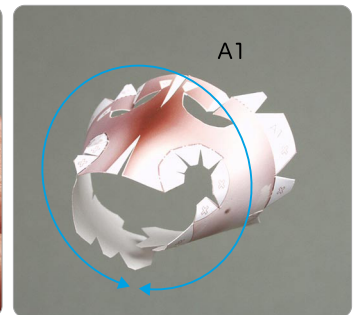
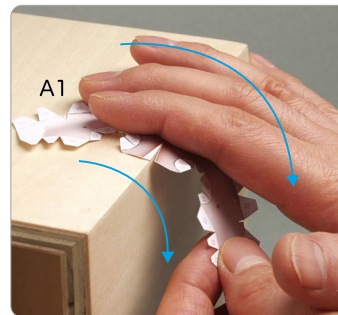
② Make a mountain fold and valley fold on A1.

★ Trace along the mountain fold line and valley fold line with a pencil, scoring it to make it easier to fold.



③ The parts will be easier to assemble if curled.

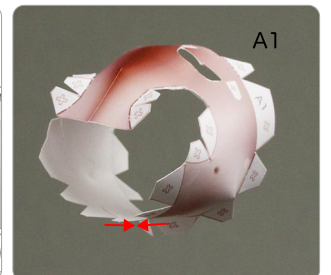
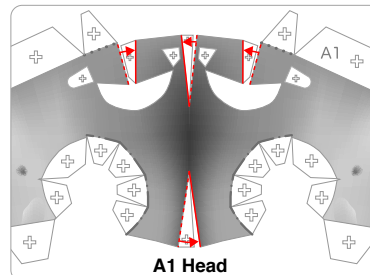
★ Using the photo as a guide, move your fingers in the direction of the arrow, adjusting the pressure to curl the paper.



④ Add a slight curl to A1 when attaching it.

★ Attach the triangular glue tabs so that the front side becomes convex.

★ Using the photo as a guide, attach in the direction of the arrow.



Tools	Notation Key
Scissors	——— Scissors line
Paste, or woodwork glue Mountain fold
Stencil pen, or bodkin	- - - - - Valley fold
Ruler	+ Glue spot
	A1, B1 Parts No.

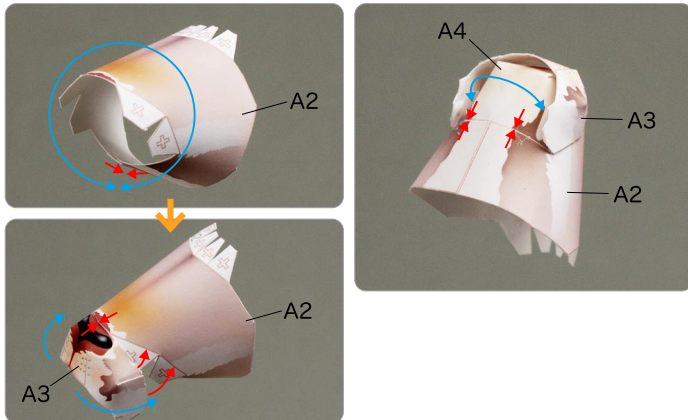
◆ The Assembly instructions are divided into four blocks: A (head), B (body), C (joey and pouch) and D (legs and tail). Follow the instructions for each block to assemble your kangaroo.

◆ ★ marks a basic assembly technique that remains the same regardless of the part. Instructions are printed only for the first instance.

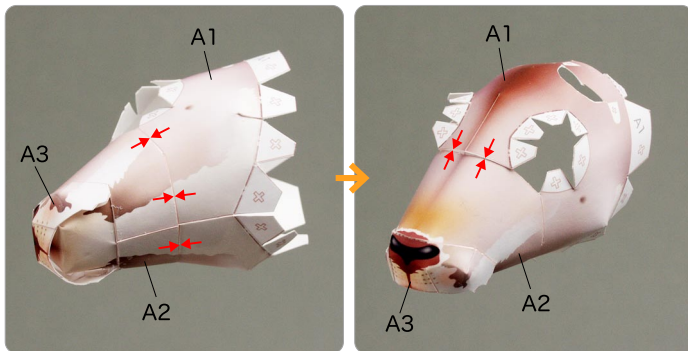
<Caution>

- ✂ Keep scissors and glue away from small children.
- ✂ Be careful not to cut your fingers when using scissors.

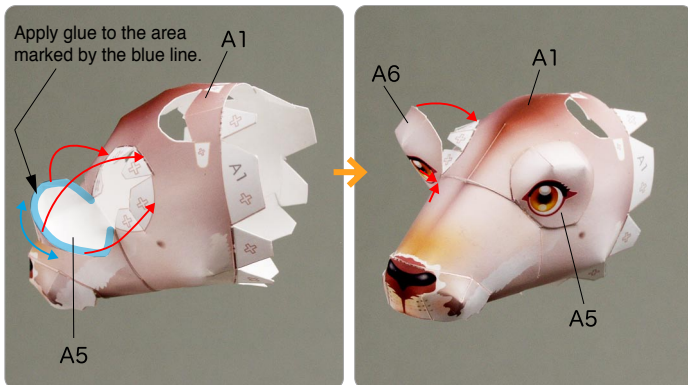
⑤ Assemble A2, A3 and A4.



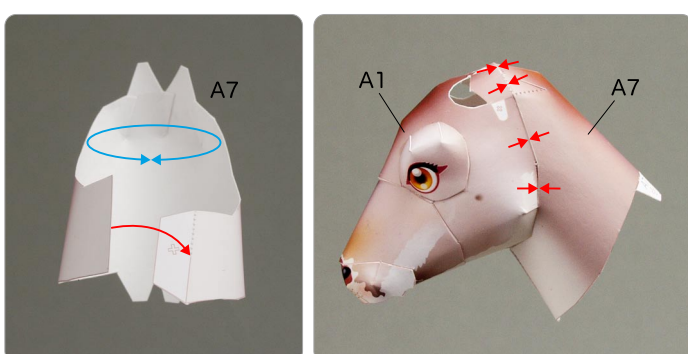
⑥ Assemble A1 and A2.



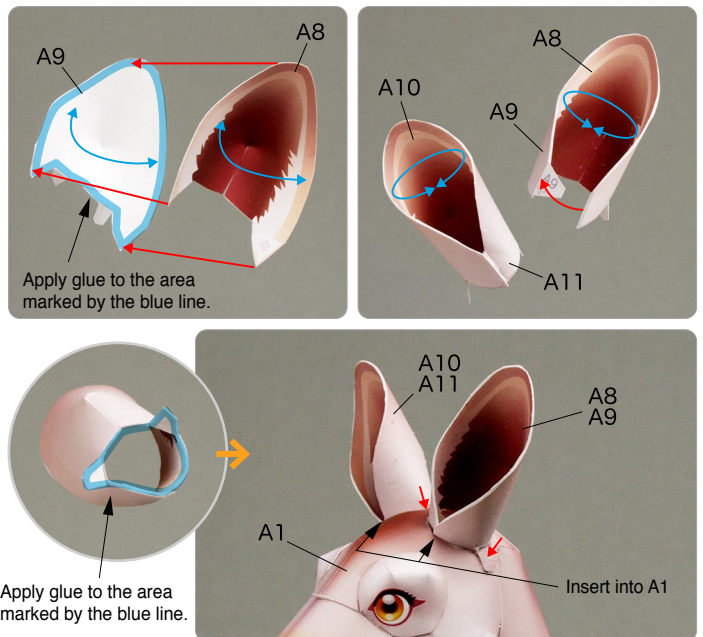
⑦ Assemble A5, A6, and attach to A1.



⑧ Assemble A7, and attach to A1.



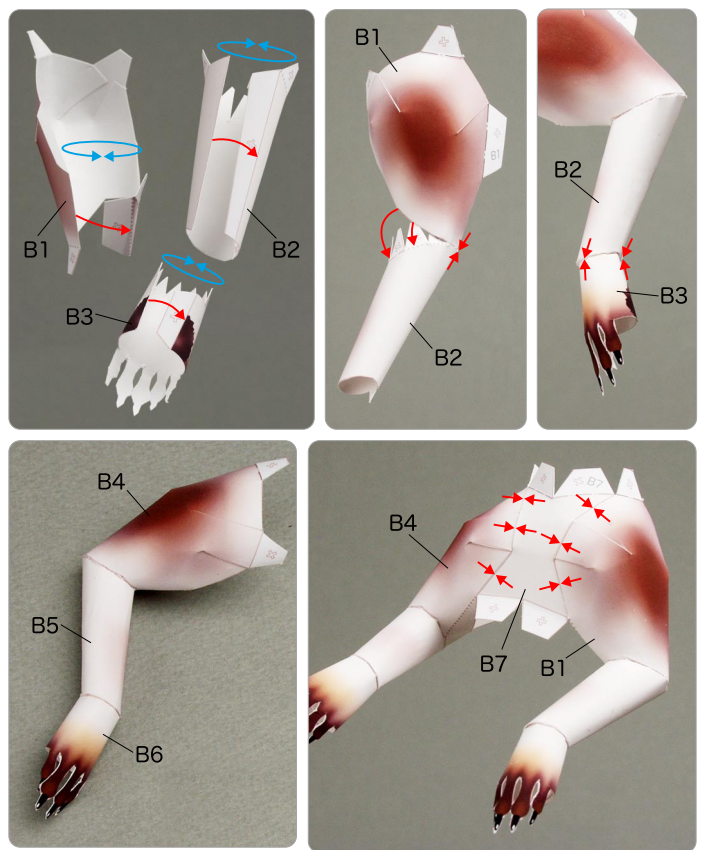
⑨ Assemble A8 and A9, and A10 and A11, attach them to the head, and the head is complete.



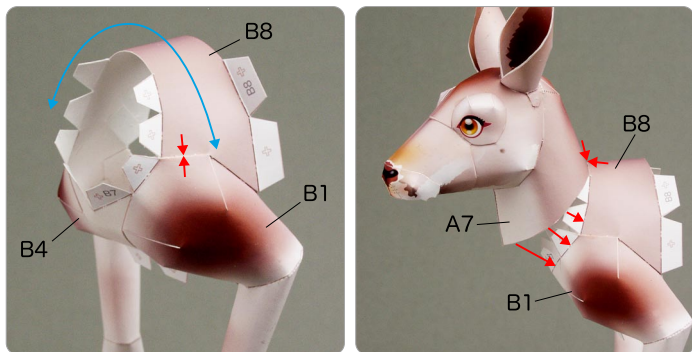
B Assemble the arms and body

Use pattern: Page3 to Page4.

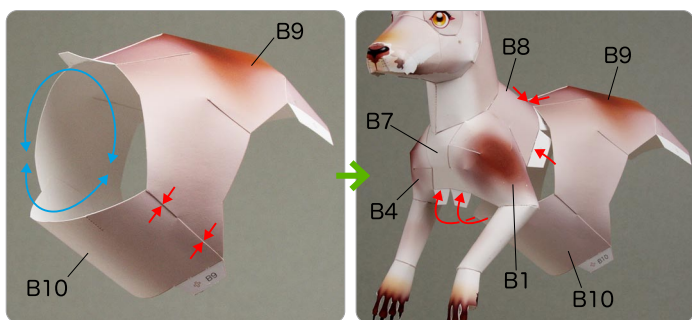
① Assemble B1, B2 and B3, and B4, B5 and B6, and attach them together in turn. Next, attach the piece to B7.



② Join B8 to the shoulders, and attach the piece to the neck.



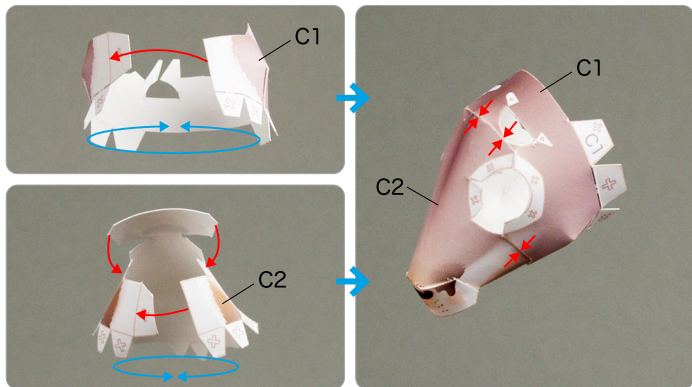
③ Assemble B9 and B10 together, attach the piece to the shoulders, and the body is complete.



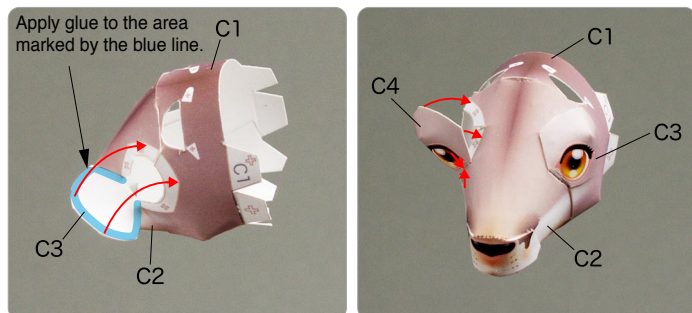
Assemble the Joey and Pouch

Use pattern: Page5.

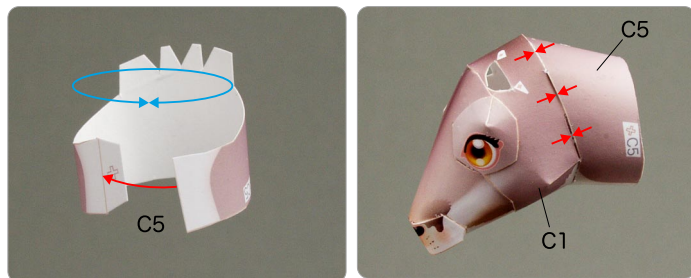
① Assemble C1 and C2, and attach them.



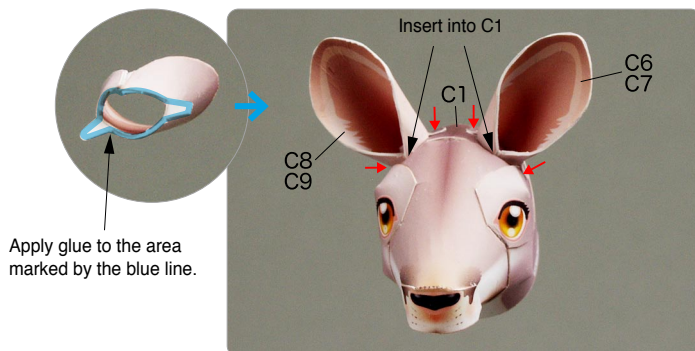
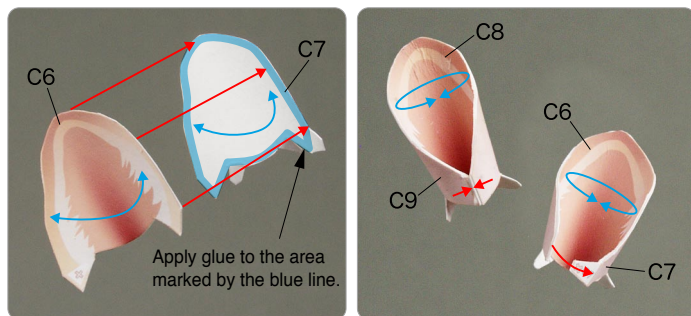
② Assemble C3 and C4, and attach them to the Head.



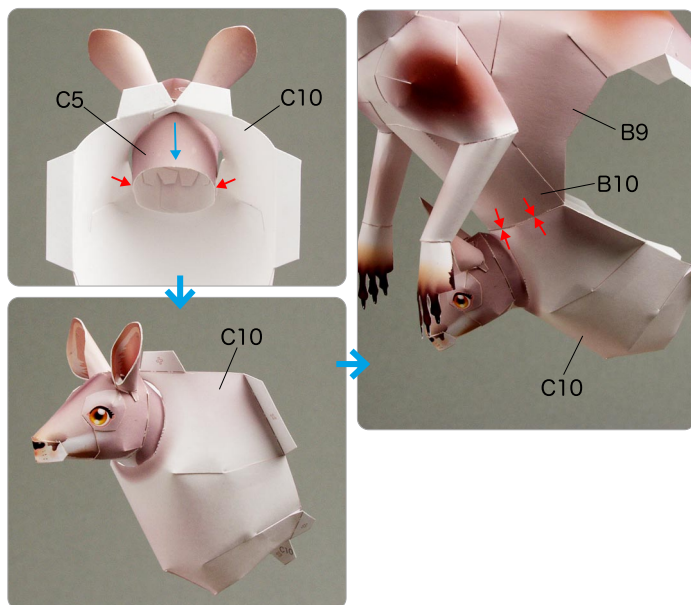
③ Assemble C5, and attach to the head.



④ Assemble C6 and C7, and C8 and C9, and attach them to the head.



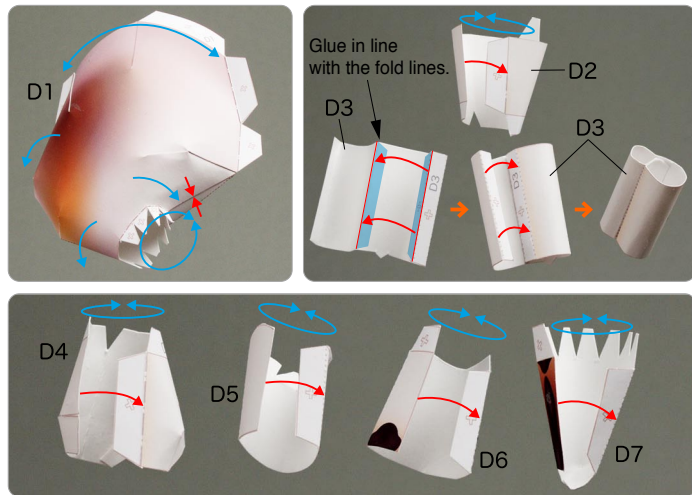
⑤ Assemble C10, and join the joey to it. Next, attach it to the kangaroo's body, and the joey and pouch are complete.



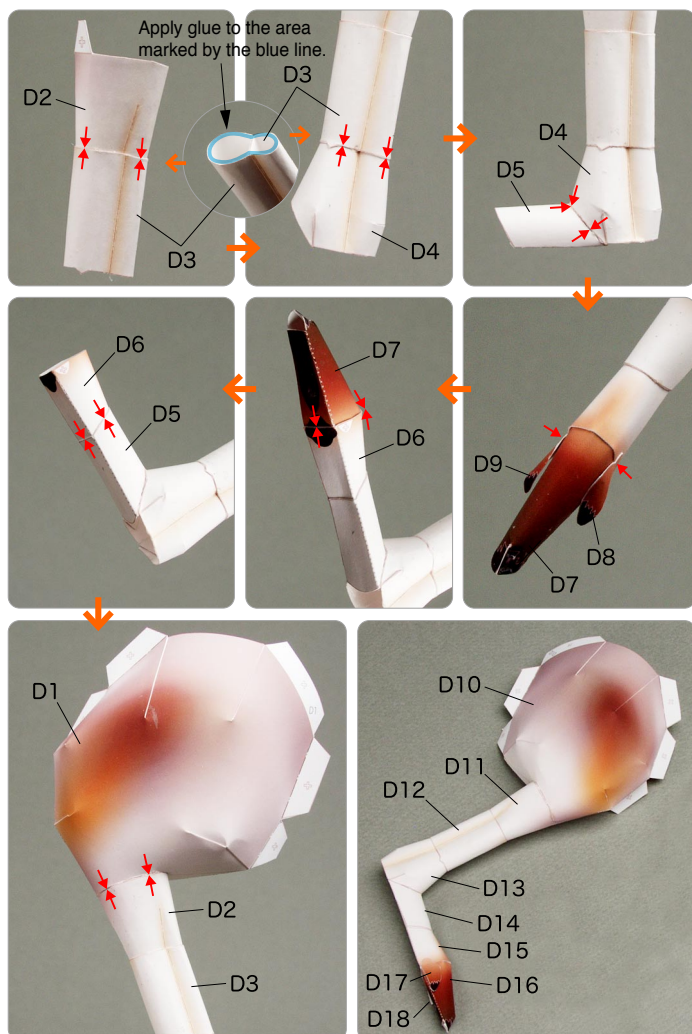
D Assemble the legs and tail

Use pattern: Page6 to Page8.

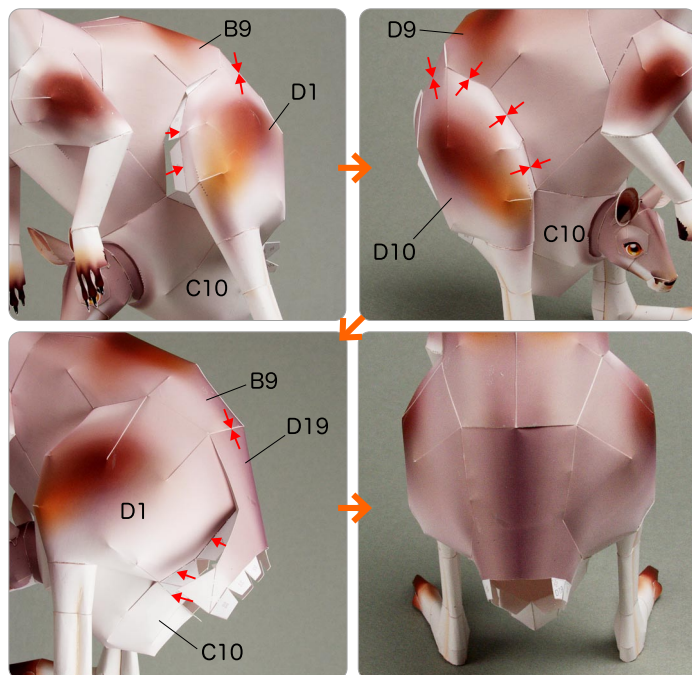
① Assemble D1 and parts D2 through D7.



② Attach parts D2 through D9 to each other in order, and then attach the piece to D1. Do the same for parts D10 through D18.



③ Attach both legs to the body, and then attach D19.



④ Assemble parts D20 through D24, attach them in order to the body, and you're done!

