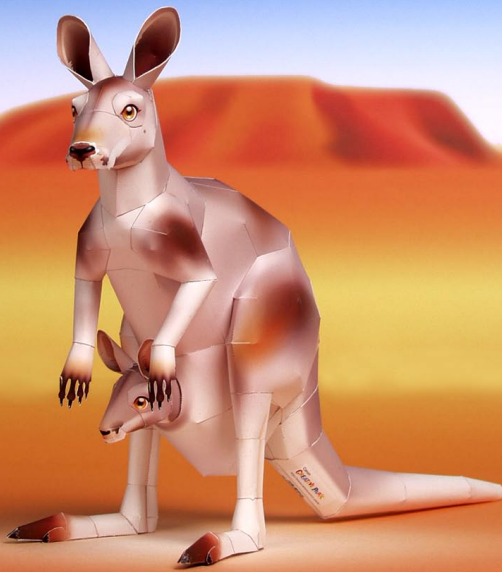




Kangaroo



Tools

Scissors
Paste, or woodwork glue
Stencil pen, or bodkin
Ruler

Notation Key

——— Scissors line
..... Mountain fold
- - - Valley fold
+ Glue spot
A1, B1 Parts No.

◆ The Assembly instructions are divided into four blocks: A (head), B (body), C (joey and pouch) and D (legs and tail). Follow the instructions for each block to assemble your kangaroo.

◆★ marks a basic assembly technique that remains the same regardless of the part.
Instructions are printed only for the first instance.

<Caution>

- ✂ Keep scissors and glue away from small children.
- ✂ Be careful not to cut your fingers when using scissors.

- Mammalia Diprotodontia Macropodidae
- Length: Approx. 75 to 160cm (approx.2.5 to 5.2 feet)
- Tail length: Approx. 65 to 100cm (approx.2.1 to 3.3 feet)
- Weight: Approx.17 to 90kg (approx. 7.7 to 40.8 lbs)
- Habitat: Australia

'Kangaroo' is the collective term for marsupials belonging to the macropodidae family. Kangaroos live in Australia, inhabiting open areas such as grassy plains. Kangaroos and other marsupials differ from humans and animals such as cats and dogs in that they do not develop a placenta and thus can not bring up young in the uterus. Instead, they have a pouch in their belly which they use for gestation. The pouch contains teats from which the baby kangaroo, called a joey, receives milk for its growth. This paper craft is based on a type of kangaroo known as the red kangaroo. The coloring of the red kangaroo differs for males and females. The male is reddish-brown, while the female is a blue-grey color.

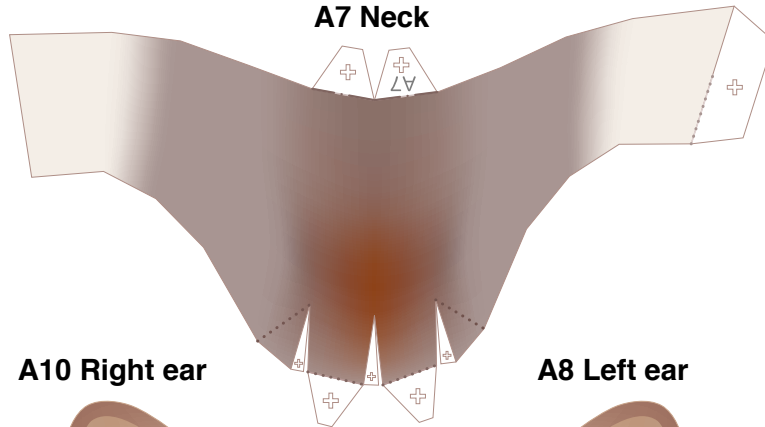




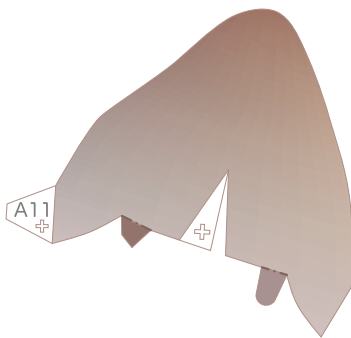
Head parts

Refer to Assembly Instructions: Page1 / Page2.

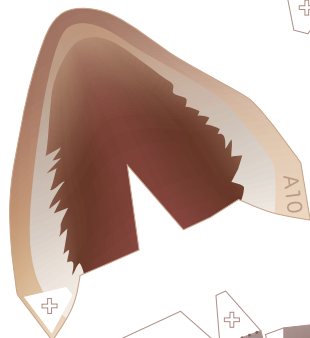
A7 Neck



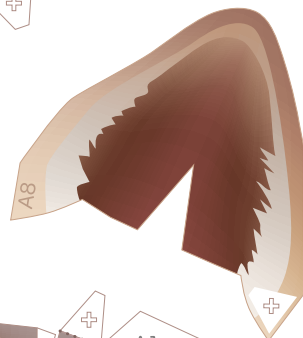
A11 Right ear



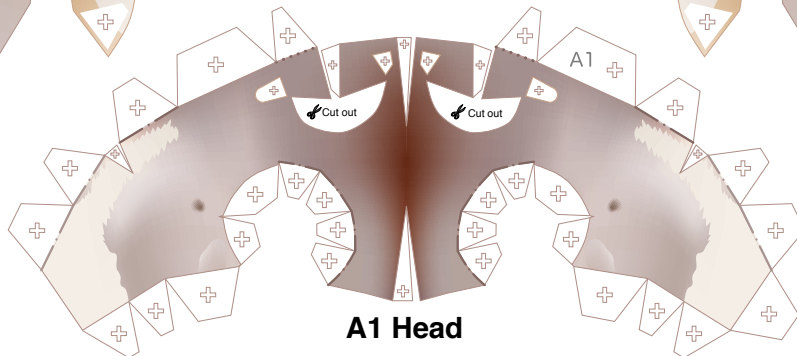
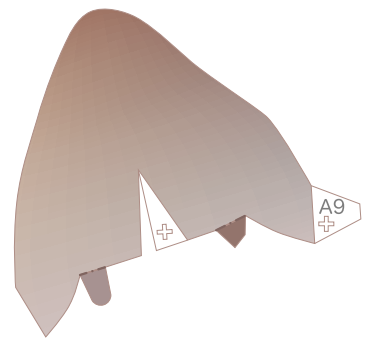
A10 Right ear



A8 Left ear

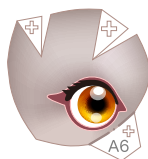


A9 Left ear



A1 Head

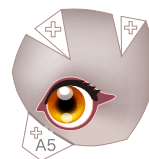
A6 Right eye



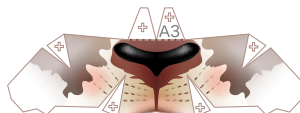
A2 Nose



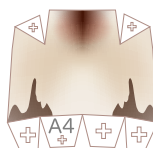
A5 Left eye



A3 Nose



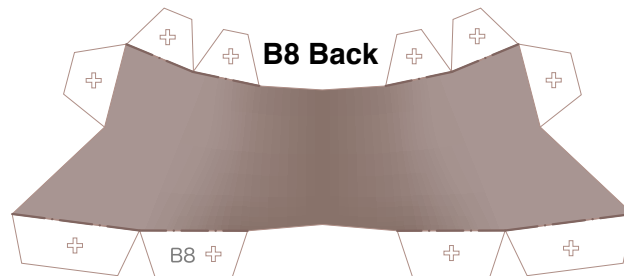
A4 Jaw



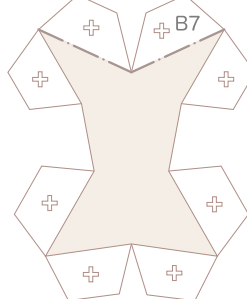


Body parts

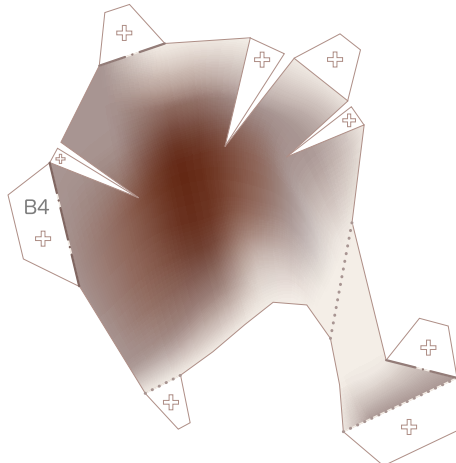
Refer to Assembly Instructions: Page2 / Page3.



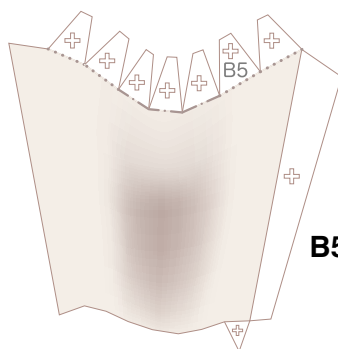
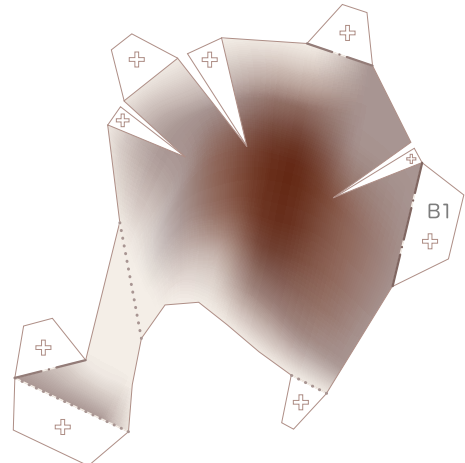
B7 Chest



B4 Right shoulder

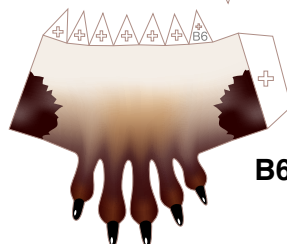
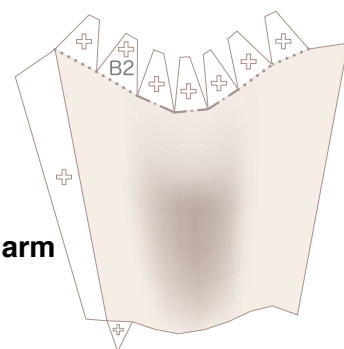


B1 Left shoulder



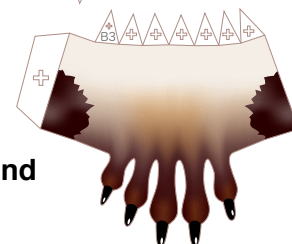
B5 Right arm

B2 Left arm



B6 Right hand

B3 Left hand

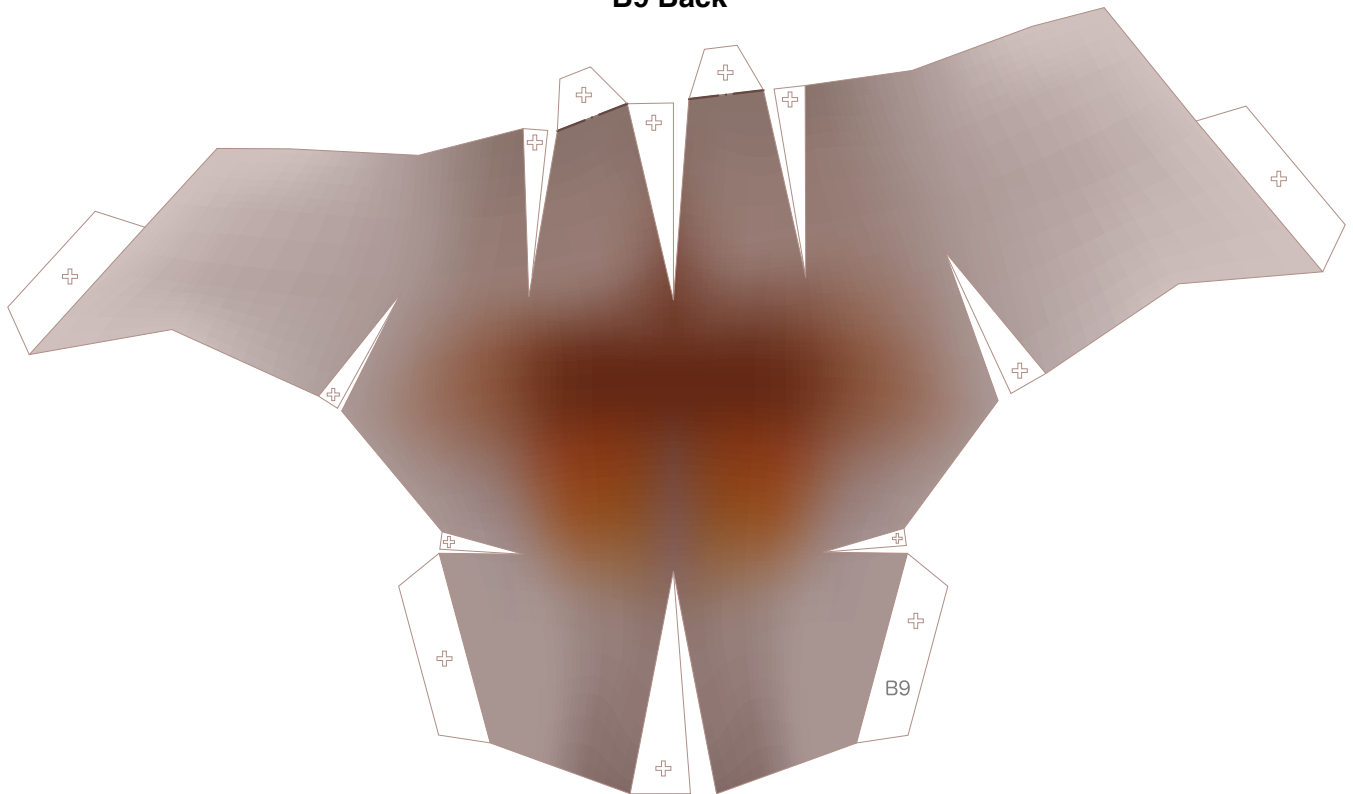




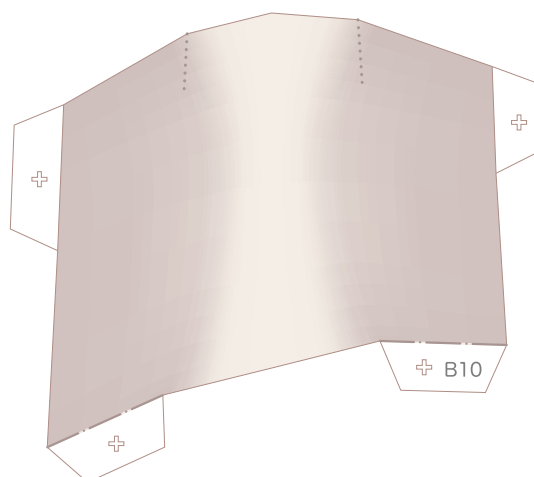
Body parts

Refer to Assembly Instructions: Page3.

B9 Back



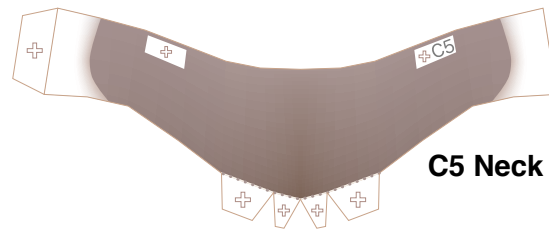
B10 Belly



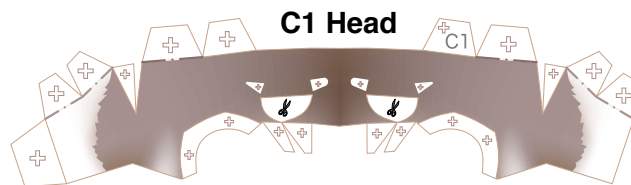


Joey and pouch parts

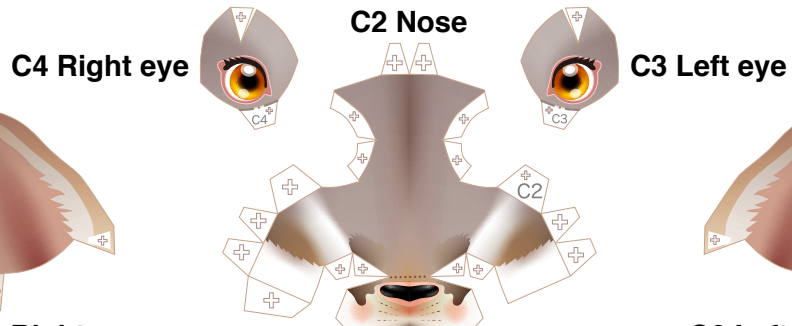
Refer to Assembly Instructions: Page3.



C5 Neck



C1 Head



C4 Right eye

C2 Nose

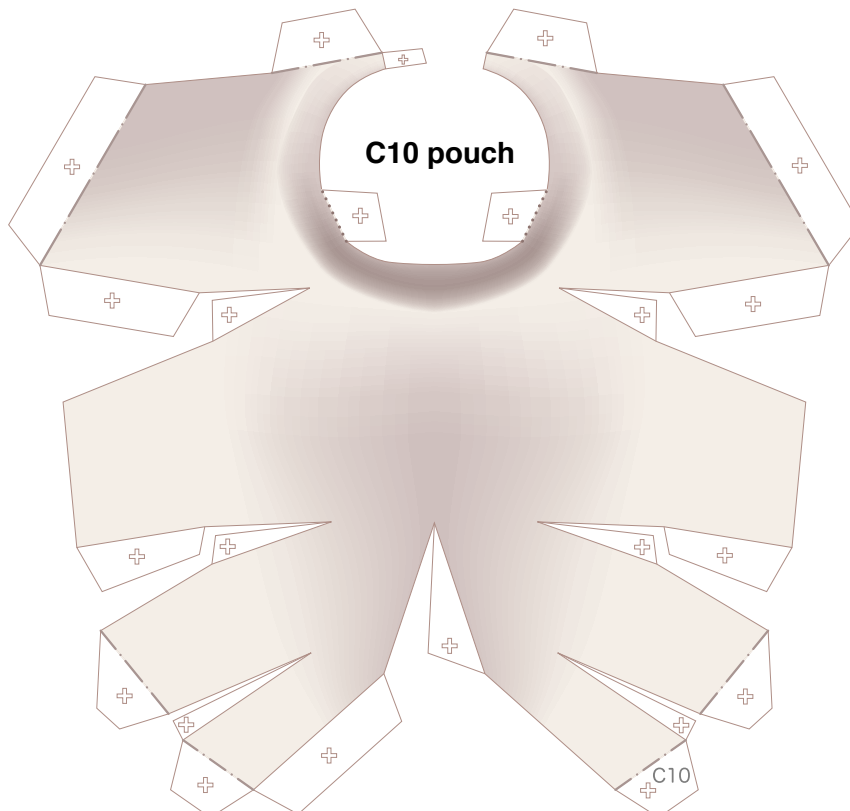
C3 Left eye

C8 Right ear

C6 Left ear

C9 Right ear

C7 Left ear

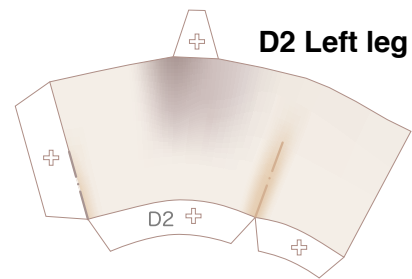
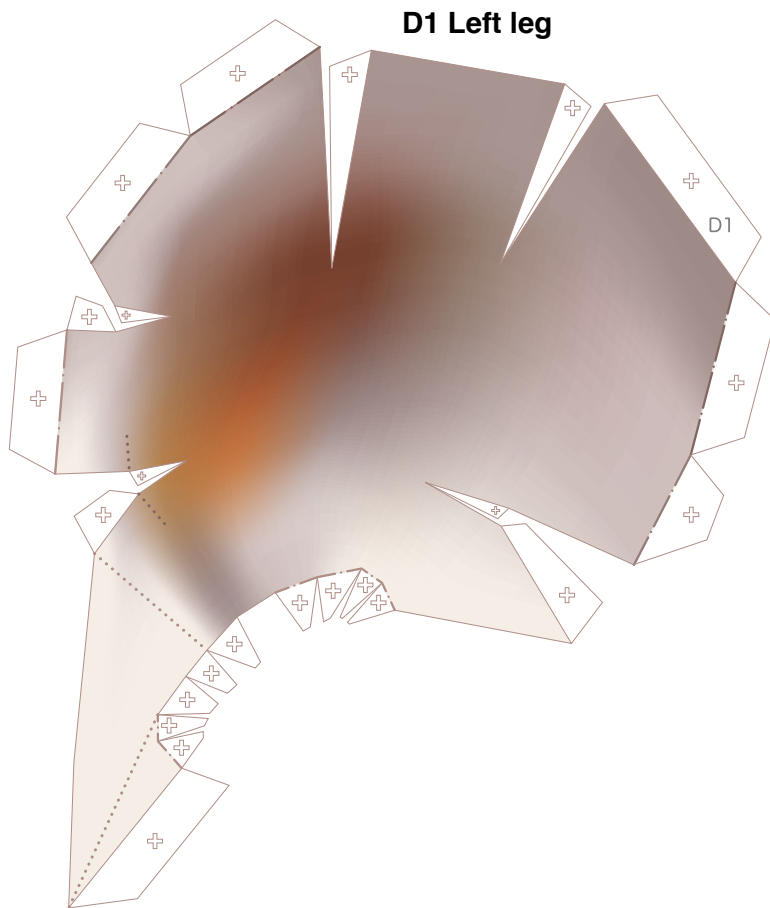


C10 pouch

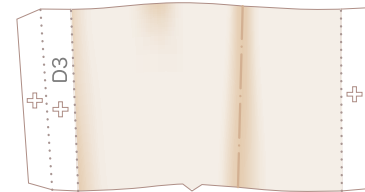


Leg parts

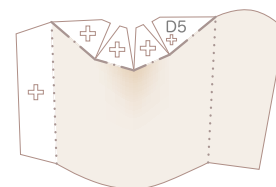
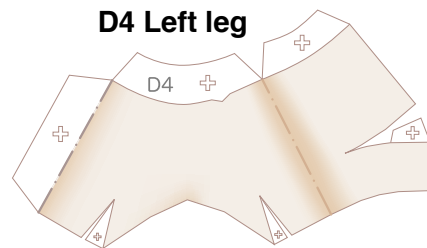
Refer to Assembly Instructions: Page4.



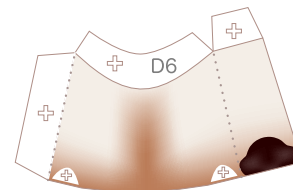
D3 Left leg



D4 Left leg



D5 Left leg

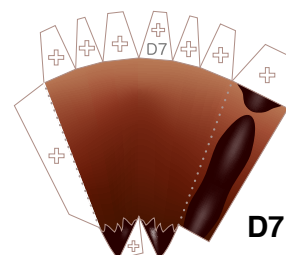


D6 Left leg

D9 Left leg



D8 Left leg



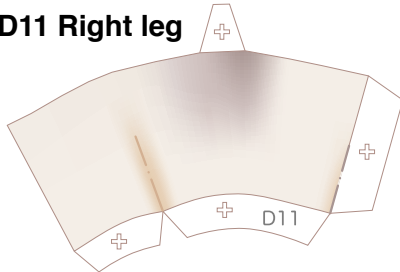
D7 Left leg



Leg parts

Refer to Assembly Instructions: Page4.

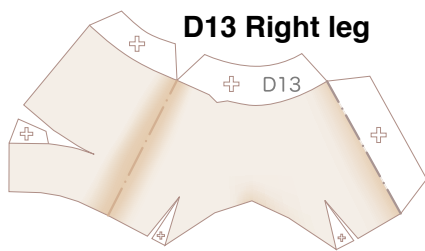
D11 Right leg



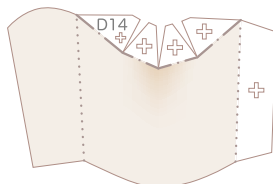
D12 Right leg



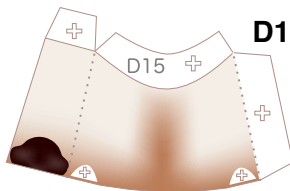
D13 Right leg



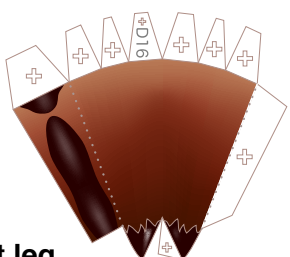
D14 Right leg



D15 Right leg



D17 Right leg

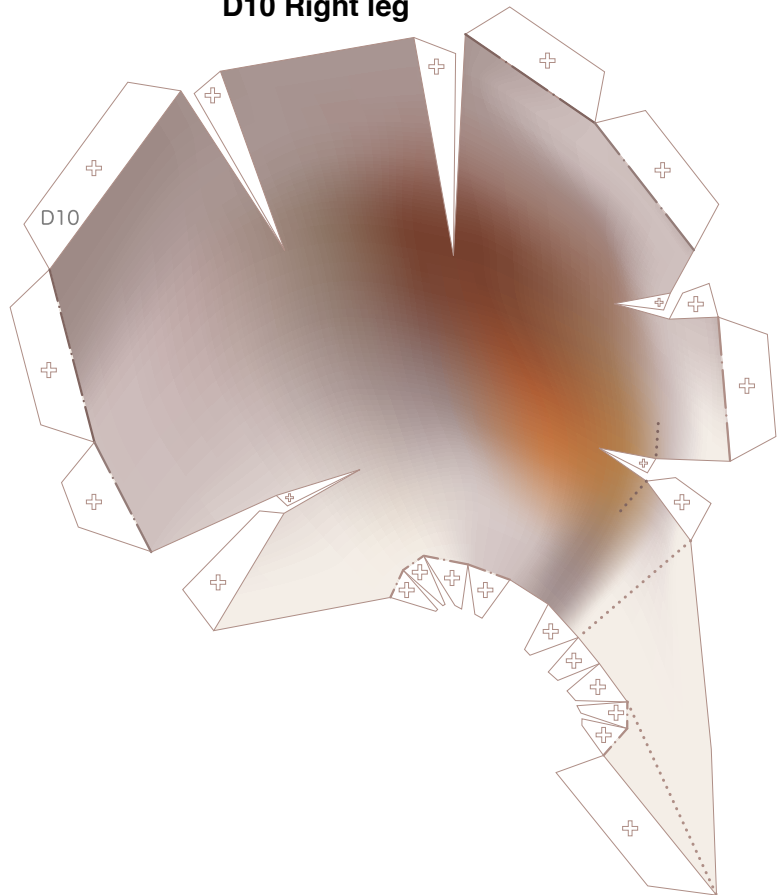


D16 Right leg

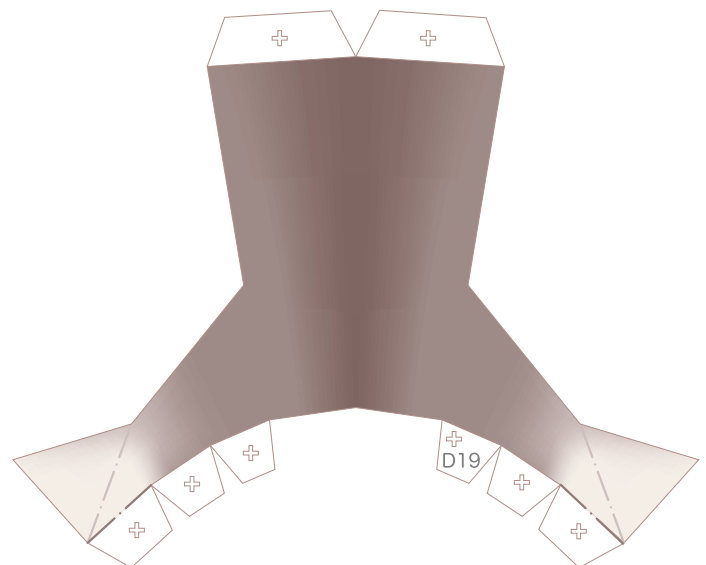


D18 Right leg

D10 Right leg



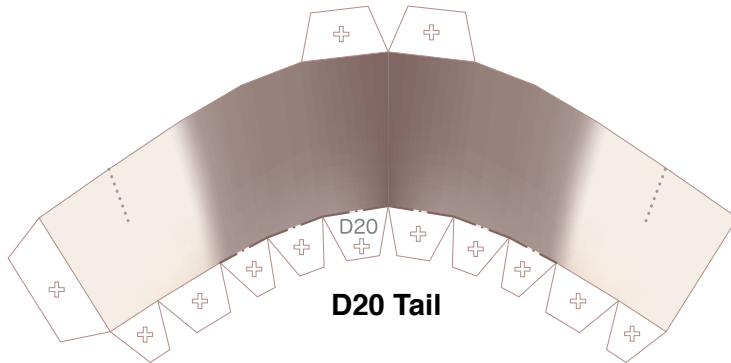
D19 Back



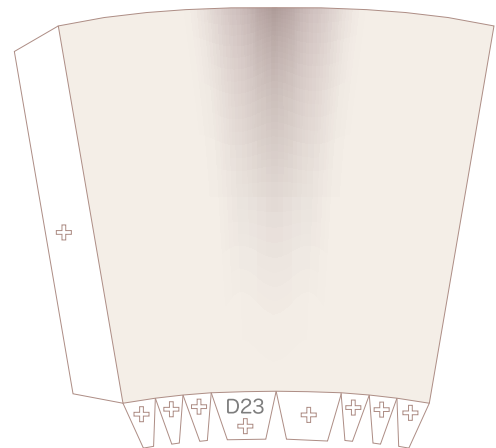


Tail parts

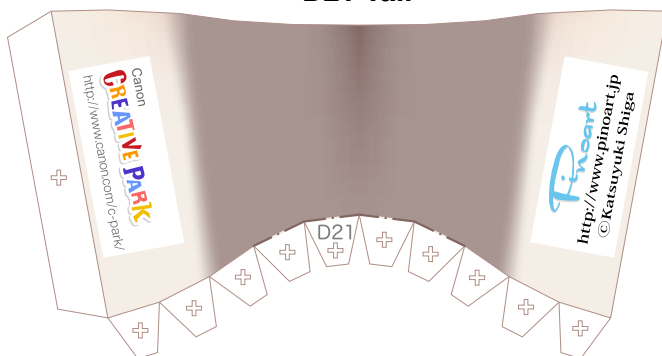
Refer to Assembly Instructions: Page4.



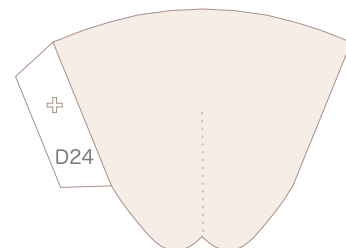
D23 Tail



D21 Tail



D24 Tail



D22 Tail

