



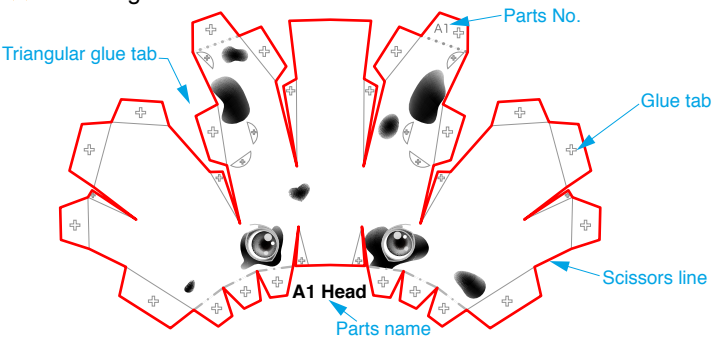
Dalmatian



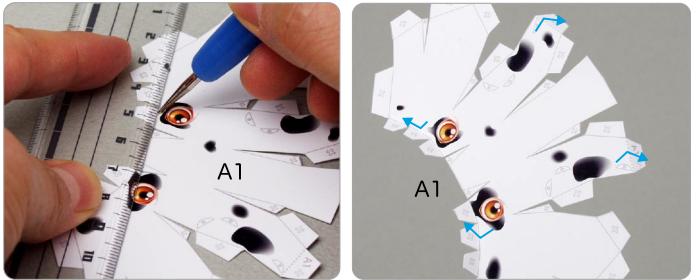
Assemble the head

Use pattern: Page2.

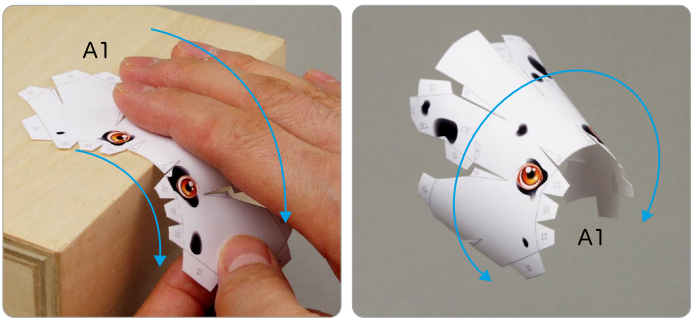
- ① Cut out A1 by cutting along the lines.  
 ★ Cut along the line marked



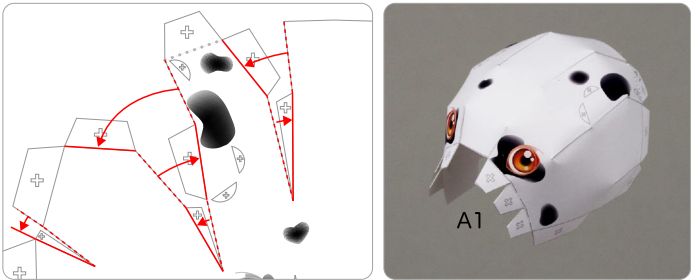
- ② Make a mountain fold and valley fold on A1.  
 ★ Trace along the mountain fold line and valley fold line with a stencil pen, scoring it to make it easier to fold.



- ③ The parts will be easier to assemble if curled.  
 ★ Using the photo as a guide, move your fingers in the direction of the arrow, adjusting the pressure to curl the paper.



- ④ Add a slight curl to A1 when attaching it.  
 ★ Attach the triangular glue tabs so that the front side becomes convex.  
 ★ Using the photo as a guide, attach in the direction of the arrow.



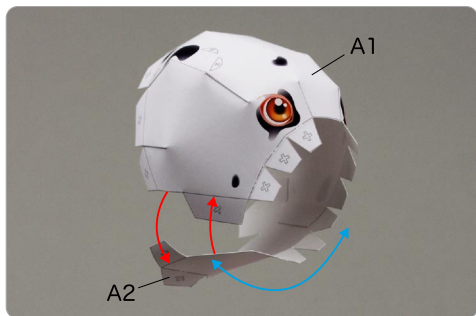
Tools	Notation Key
Scissors	— Scissors line
Paste, or woodwork glue	..... Mountain fold
Stencil pen, or bodkin	- - - Valley fold
Ruler	+ Glue spot
	A1, B1 Parts No.

- ◆ The Assembly instructions are divided into three blocks:  
 A (head), B (waist, hind legs, tail) and C (body, front legs).  
 Follow the instructions for each block to assemble your dalmatian.  
 ◆ ★ marks a basic assembly technique that remains the same regardless of the part.  
 Instructions are printed only for the first instance.

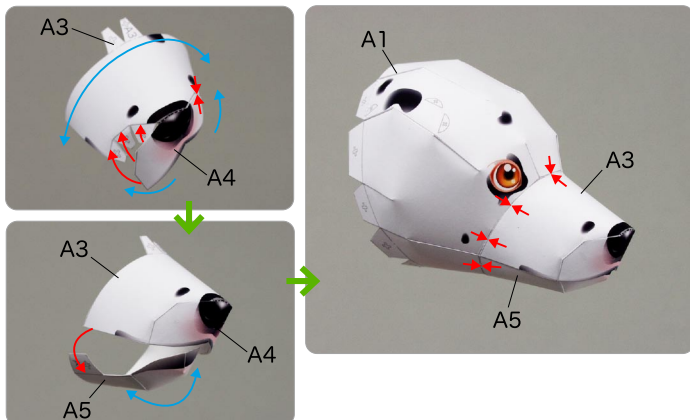
<Caution>

- ※ Keep scissors and glue away from small children.  
 ※ Be careful not to cut your fingers when using scissors.

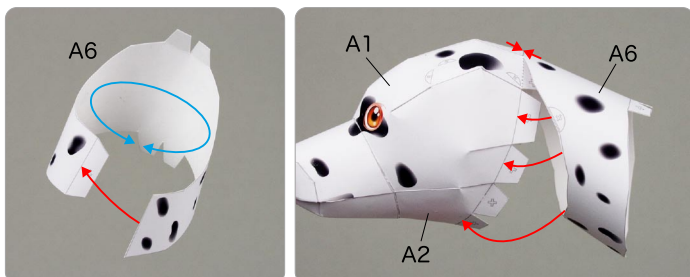
⑤ Attach A1 and A2.



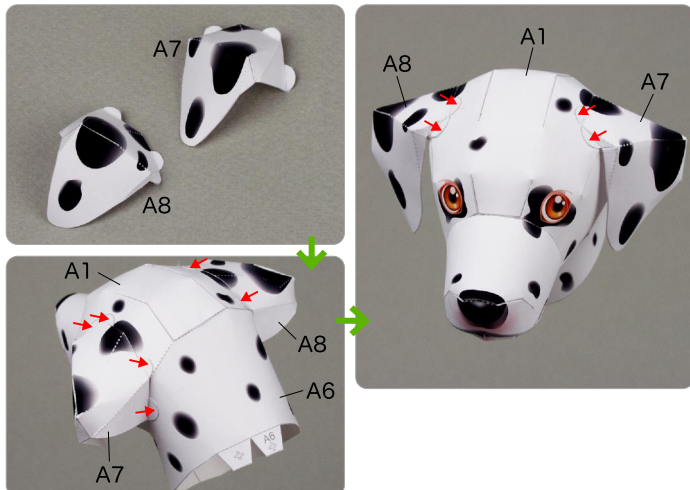
⑥ Attach A3, A4 and A5, and attach them to the head.



⑦ Assemble A6, and attach it to the head.



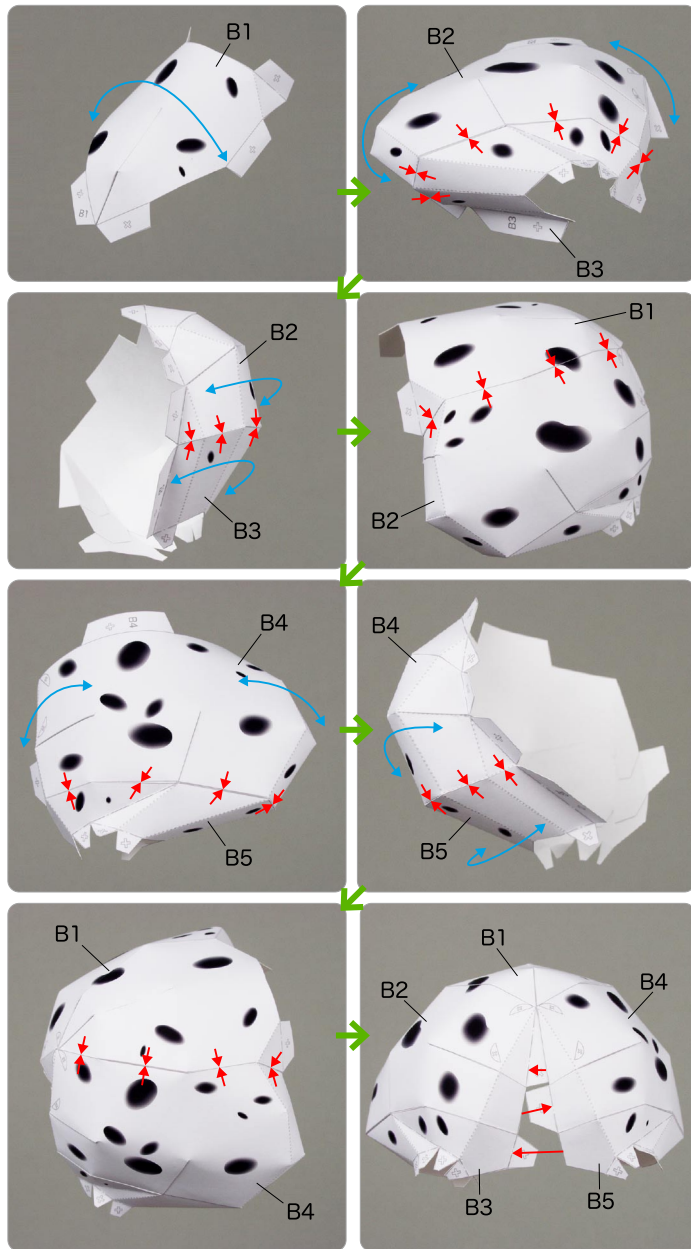
⑧ Attach A7 and A8, and attach them to the head, and the head is complete.



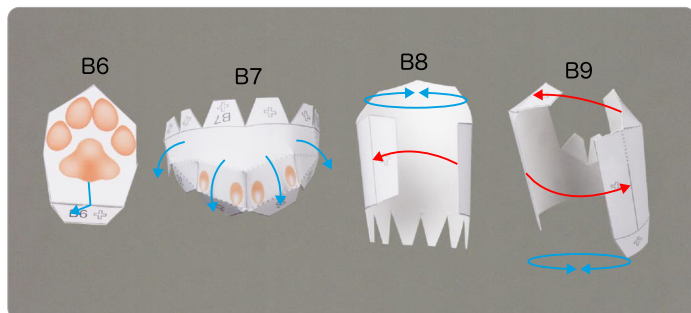
## B Assemble the waist, hind legs and tail

Use pattern: Page3 / Page4.

① Assemble parts B1 ~ B5, and attach them together.

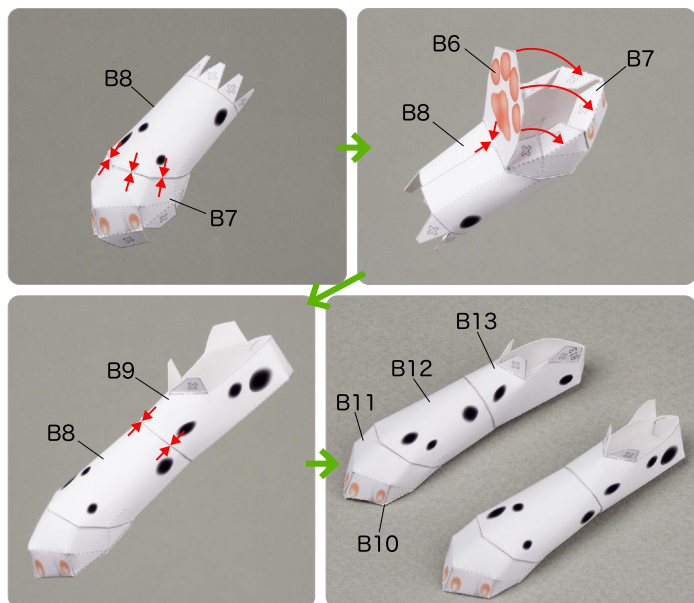


② Assemble parts B6 ~ B9.

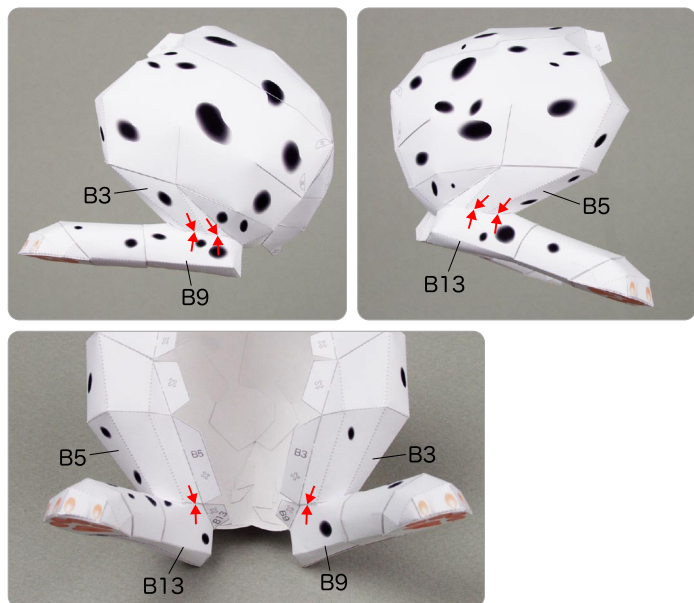




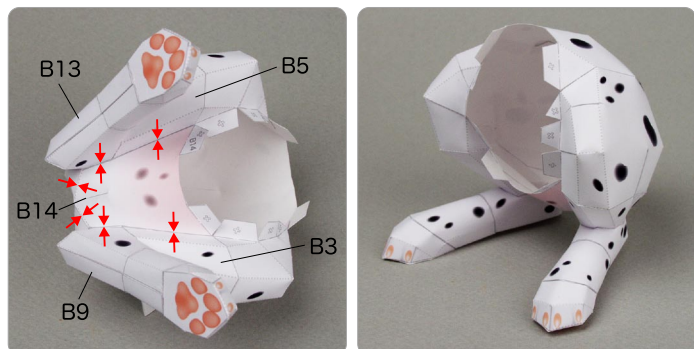
- ③ Attach parts B6 ~ B9.  
Do the same for parts B10 ~ B13.



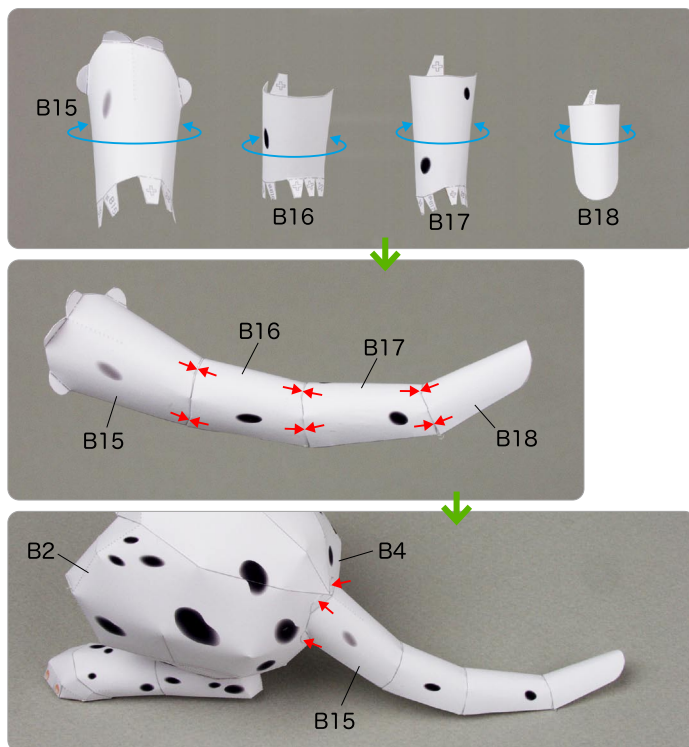
- ④ Attach the hind legs to B3 ~ B5.



- ⑤ Attach B14 to the hind legs.



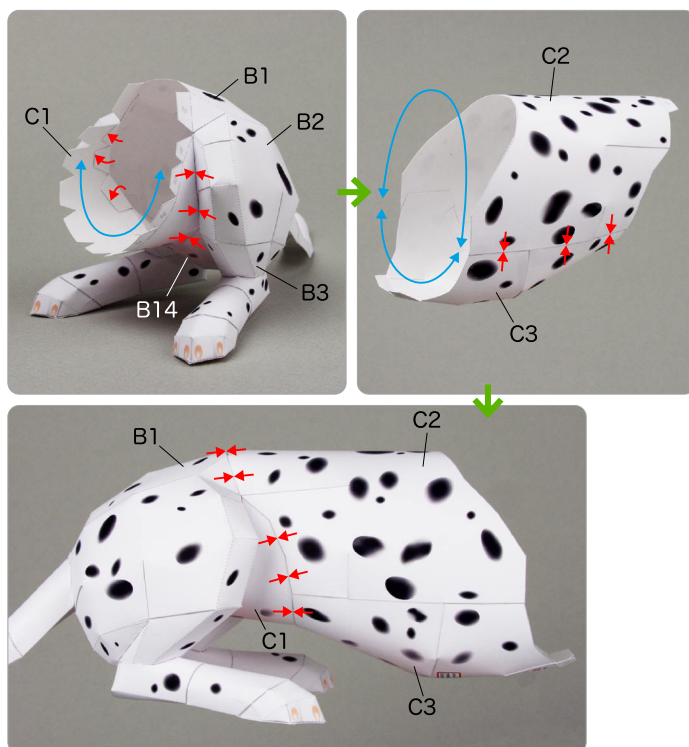
- ⑥ Curl parts B15 ~ B18, and attach them together in order.  
Next, attach the tail to B2 and B4, and the waist, hind legs and tail are complete.



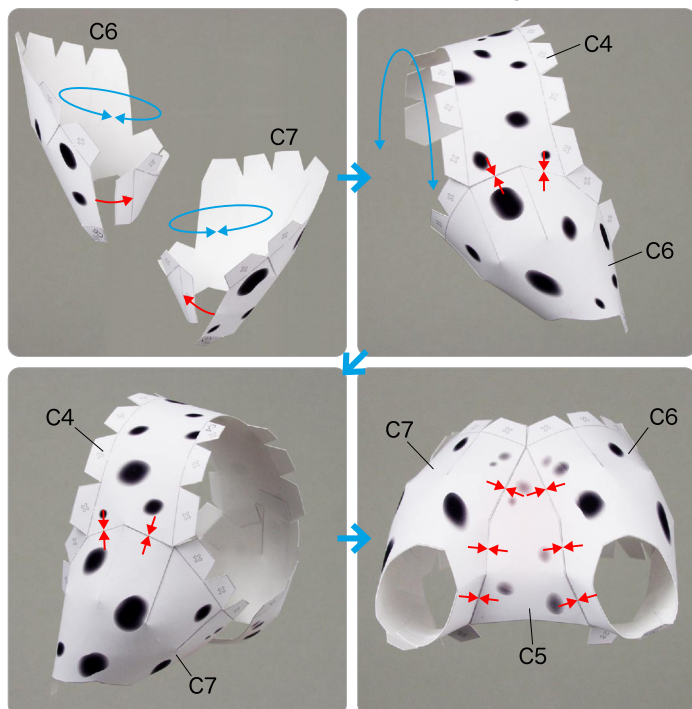
## C Assemble the body and front legs

Use pattern: Page5 to Page7.

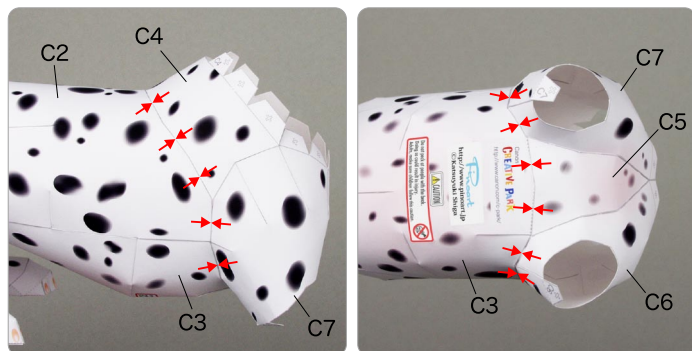
- ① Attach C1 to the hind legs. Next, attach C2 and C3 together, and attach that to the waist.



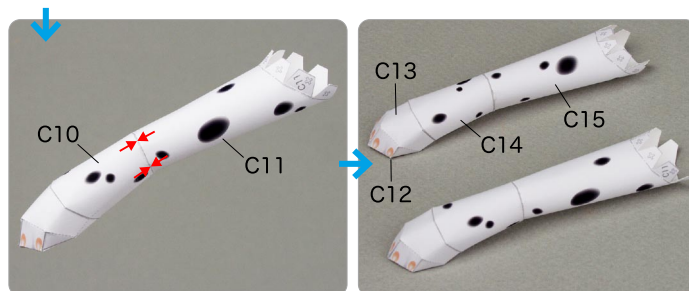
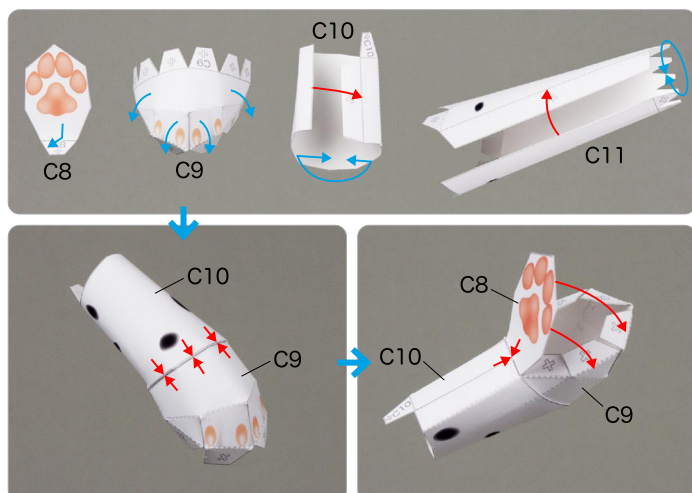
② Assemble parts C4 ~ C7, and attach them together.



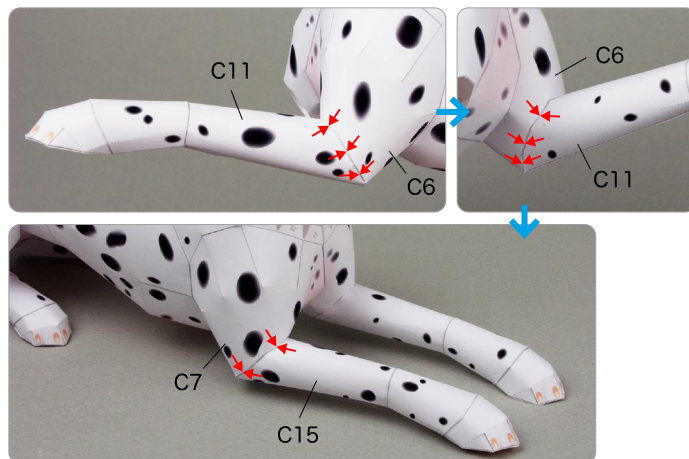
③ Attach parts C4 ~ C7 to the body.



④ Assemble parts C8 ~ C11, and attach them.  
Do the same for parts C12 ~ C15.



⑤ Attach the front legs to C6 and C7.



⑥ Assemble C16, and attach it to the body. Next, attach the head and body, and your dalmatian is complete.

