



Dalmatian



- Height: Approx.48 to 58cm (approx. 1.8 to 1.9 feet)
- Weight: Approx.16 to 23kg (approx. 35.3 to 50.7 lbs)
- Origin: Croatia
- Personality: Highly acute senses, clever and gentle

The Dalmatian is a breed of dog known for its black (or brown) spots on a white coat. Dalmatians are born completely white but begin to develop spots about two weeks after birth. In the past they were often used as hunting dogs or watch dogs, as well as sheep dogs, meaning they have the strength and stamina to endure tough physical exertion. They also get along well with horses, and back when horse-drawn carriages were the mainstream form of transport, Dalmatians were used to guide or protect the carriage. In America, there were many heroic rescues performed by Dalmatians leading horse-drawn fire engines. The Dalmatian remains known as an unofficial mascot of the fire brigade to this day.



Tools	Notation Key
Scissors	——— Scissors line
Paste, or woodwork glue Mountain fold
Stencil pen, or bodkin	- - - - - Valley fold
Ruler	+ Glue spot
	A1, B1 Parts No.

- ◆ The Pattern is divided into three blocks:
A (head), B (waist, hind legs, tail) and C (body, front legs).
Follow the instructions for each block to assemble your dalmatian.

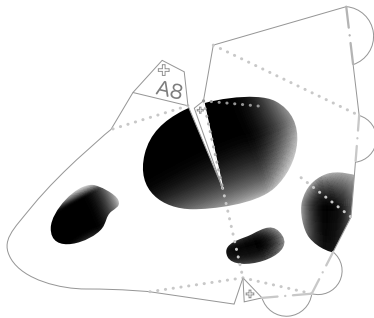
<Caution>

- ※ Keep scissors and glue away from small children.
- ※ Be careful not to cut your fingers when using scissors.

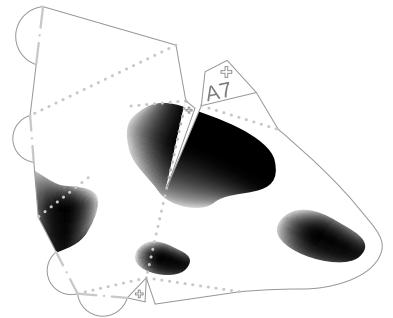


Head parts

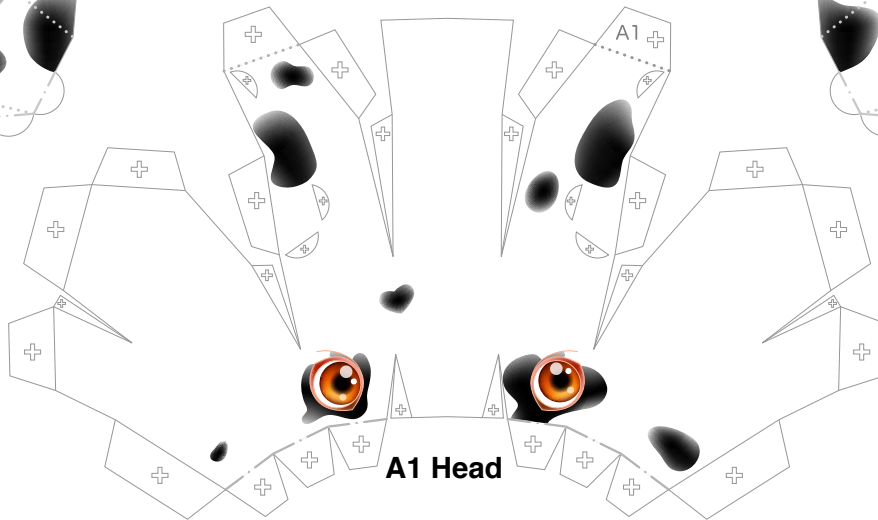
Refer to Assembly Instructions: Page1 / Page2.



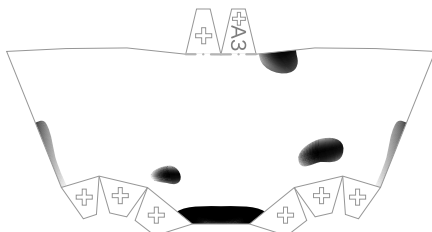
A8 Ear (Right)



A7 Ear (left)

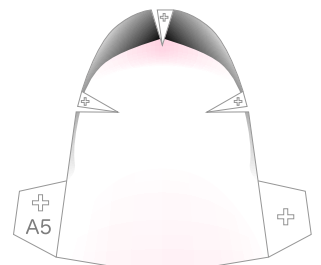
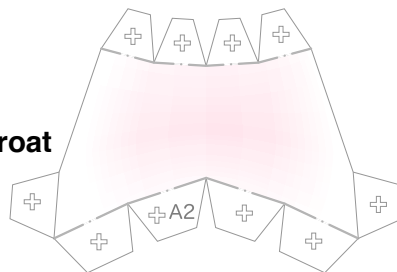


A1 Head

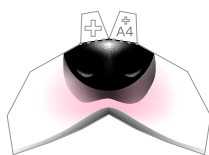


A3 Snout

A2 Throat

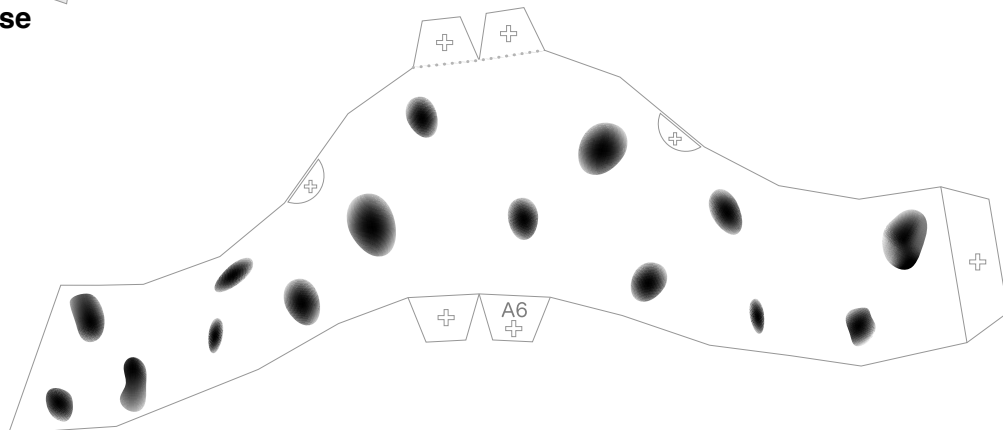


A5 Jaw



A4 Nose

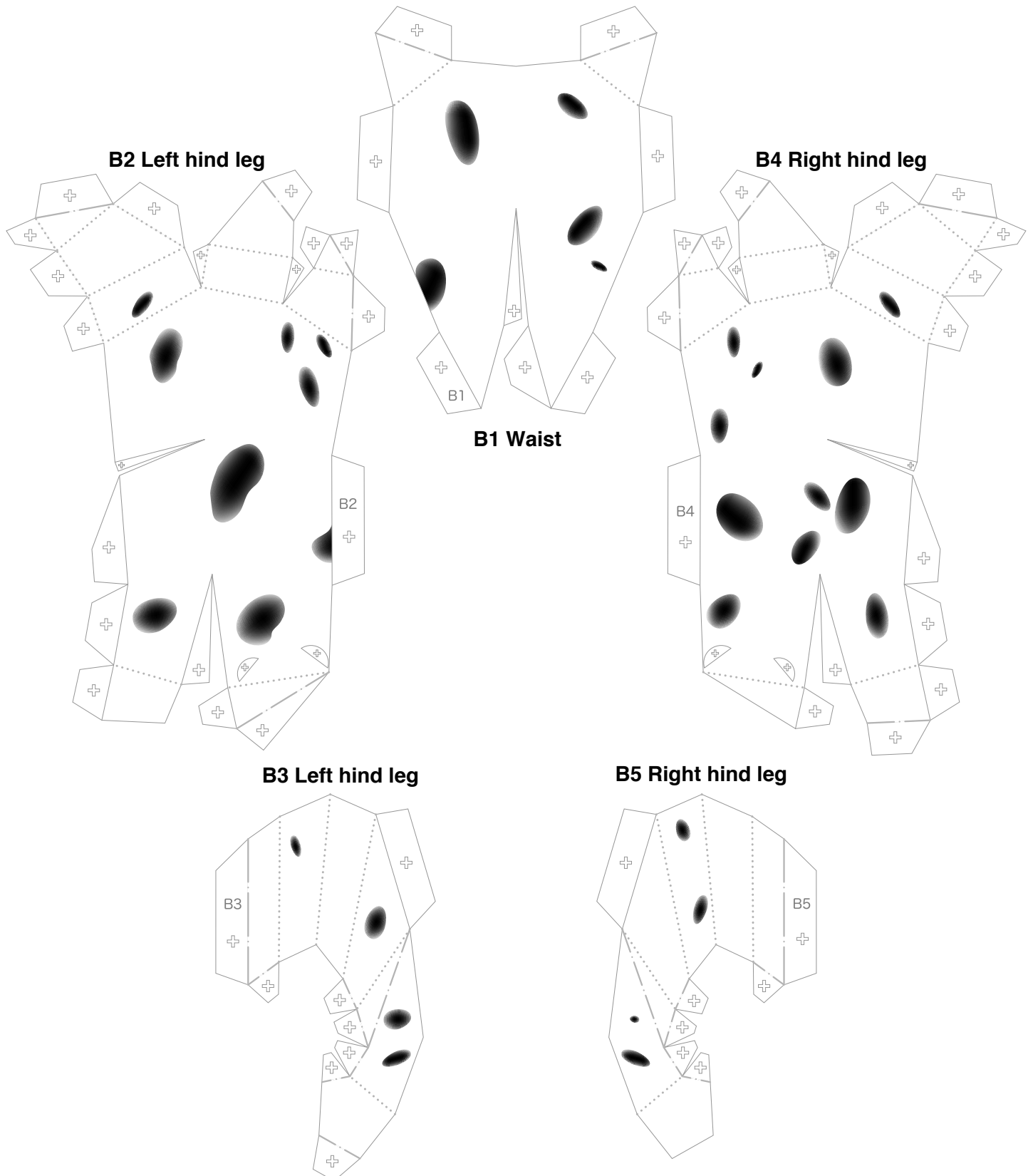
A6 Neck





Waist and hind leg parts

Refer to Assembly Instructions: Page2 / Page3.





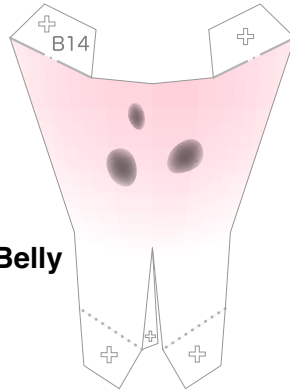
Hind leg and tail parts

Refer to Assembly Instructions: Page2 / Page3.

B6 Left hind leg



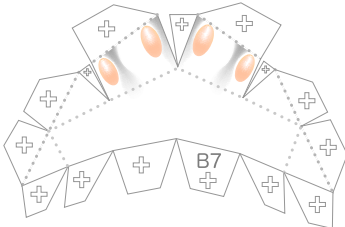
B14 Belly



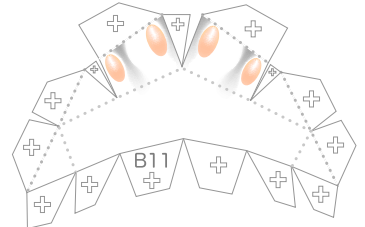
B10 Right hind leg



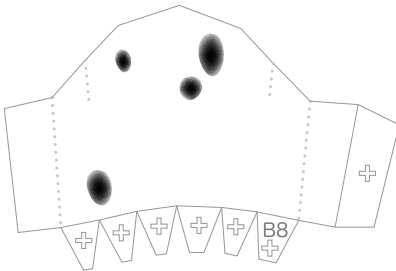
B7 Left hind leg



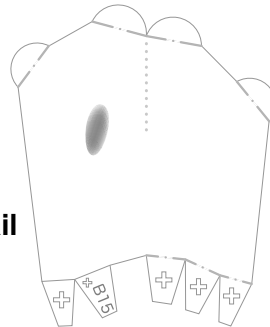
B11 Right hind leg



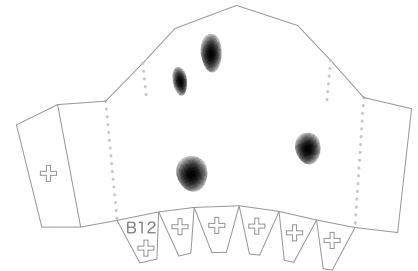
B8 Left hind leg



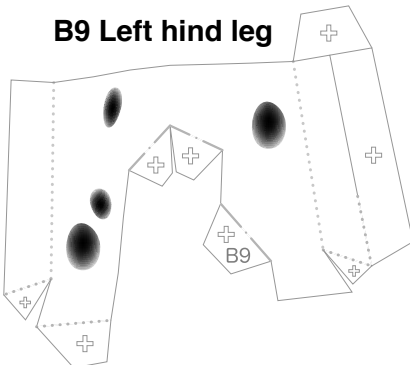
B15 Tail



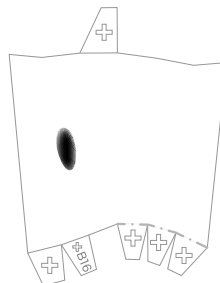
B12 Right hind leg



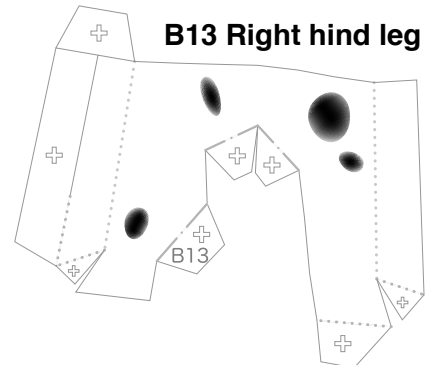
B9 Left hind leg



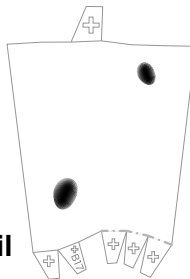
B16 Tail



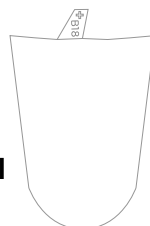
B13 Right hind leg



B17 Tail



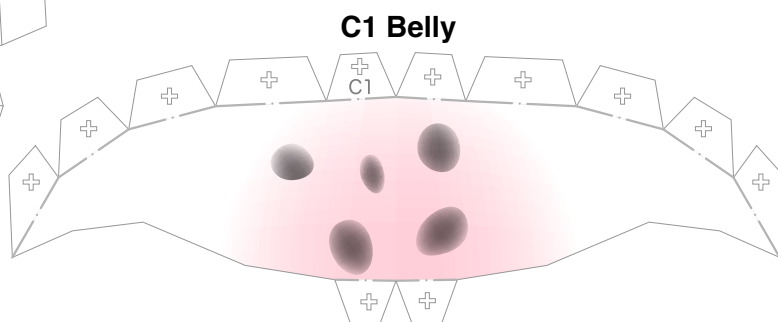
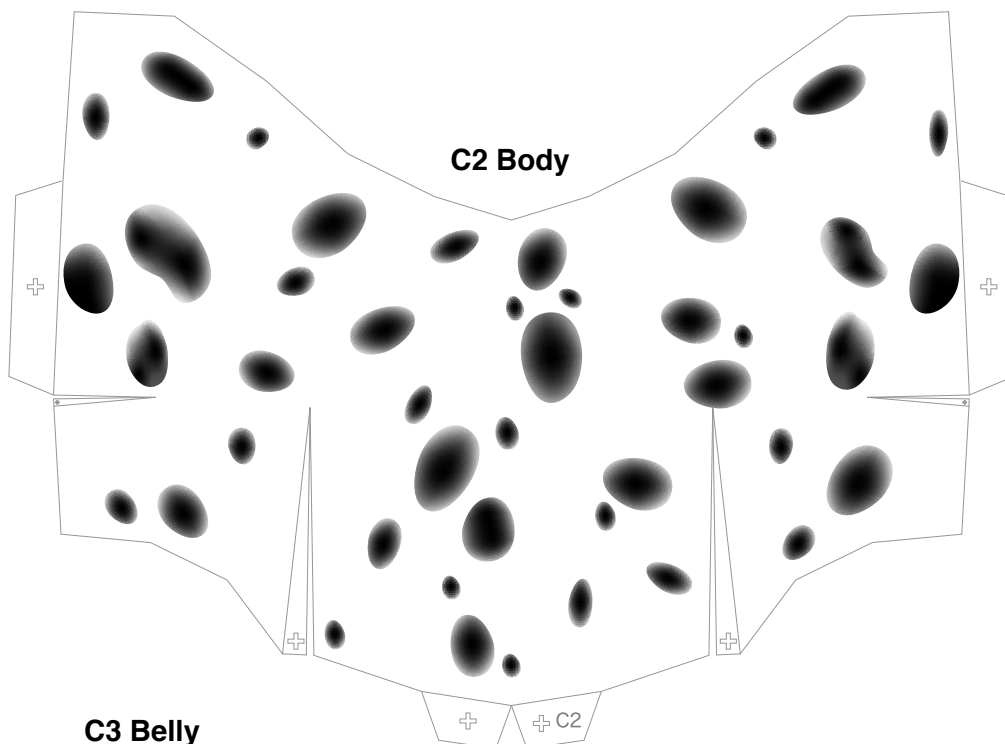
B18 Tail





Body parts

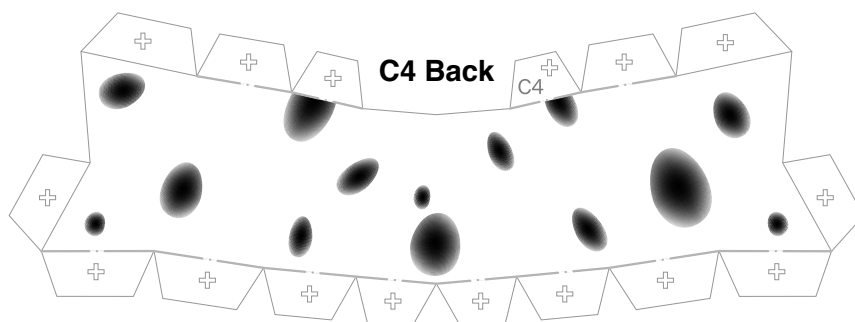
Refer to Assembly Instructions: Page3 / Page4.



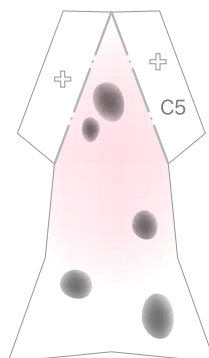


Front leg parts

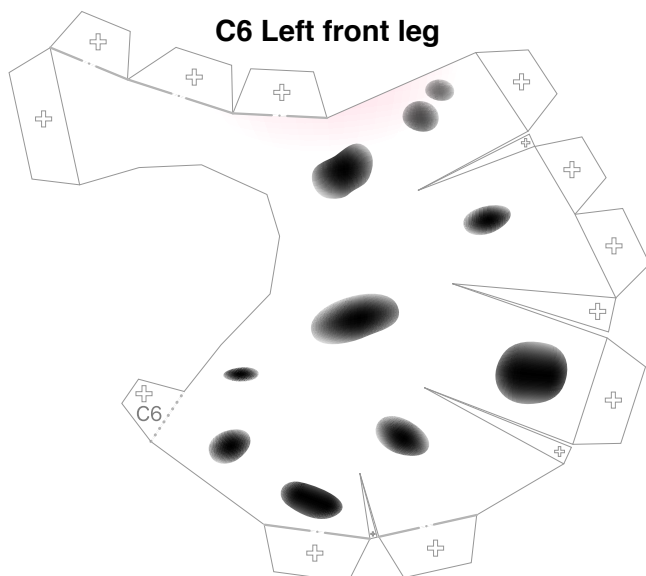
Refer to Assembly Instructions: Page4.



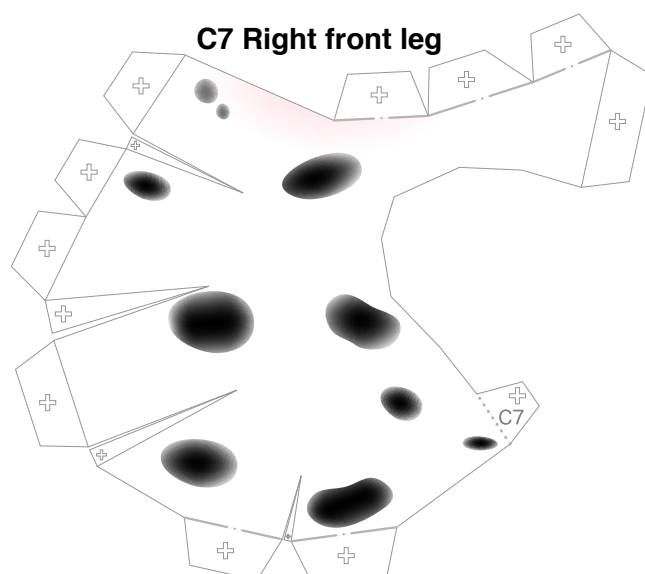
C5 Chest



C6 Left front leg



C7 Right front leg





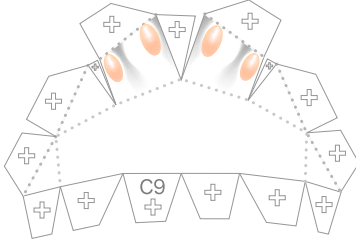
Front leg parts

Refer to Assembly Instructions: Page4.

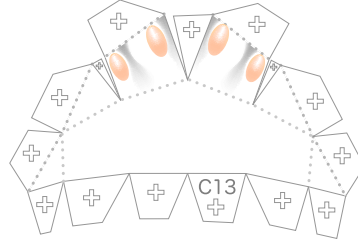
C8 Left front leg



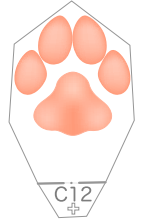
C9 Left front leg



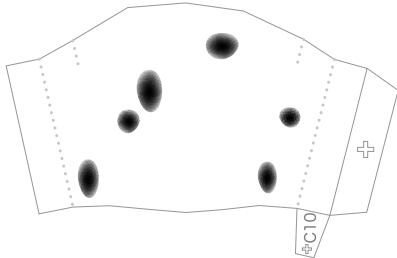
C13 Right front leg



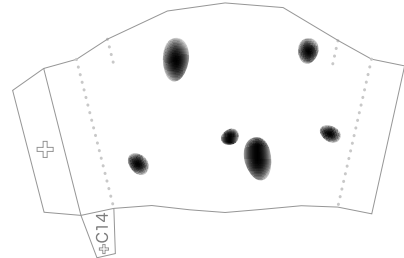
C12 Right front leg



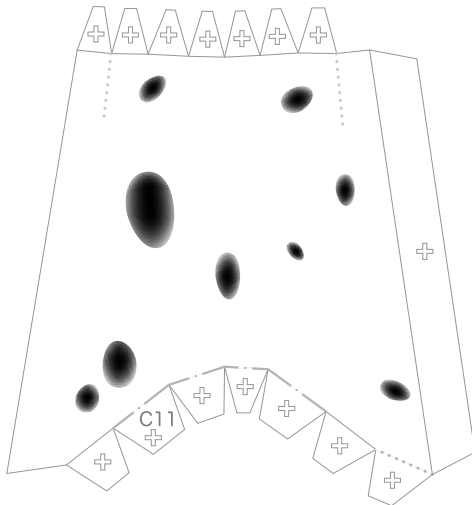
C10 Left front leg



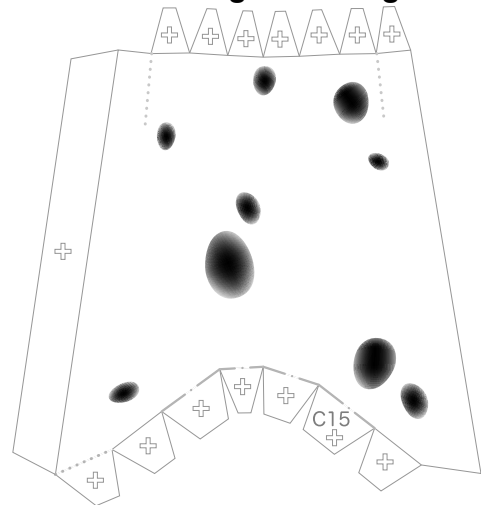
C14 Right front leg



C11 Left front leg



C15 Right front leg



C16 Neck

