
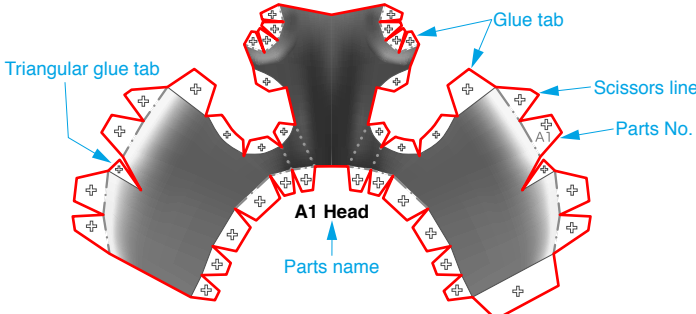




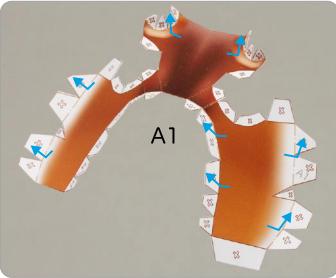
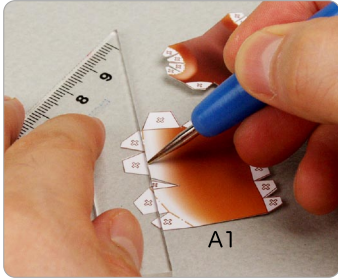
Assemble the head and antlers

Use pattern: Page2 to Page4.

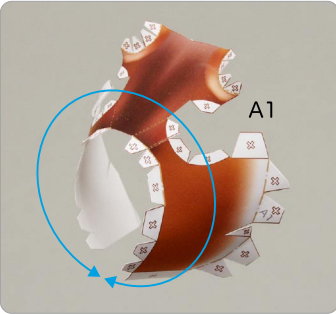
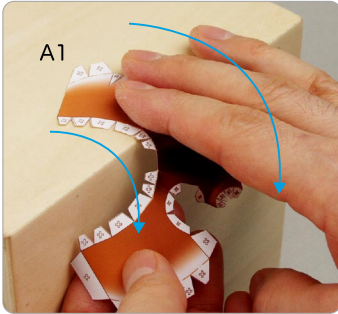
- ① Cut out A1 by cutting along the lines.
- ★ Cut along the line marked .



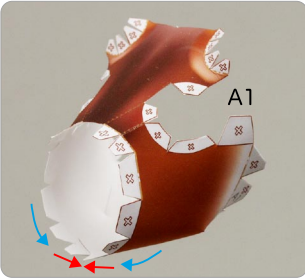
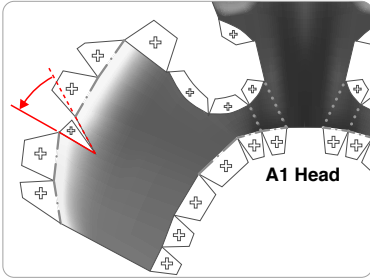
- ② Make a mountain fold and valley fold on A1.
- ★ Trace along the mountain fold and valley fold line with a stencil pen, scoring it to make it easier to fold.





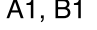


- ③ The parts will be easier to assemble if curled.
- ★ Using the photo as a guide, move your fingers in the direction of the arrow, adjusting the pressure to curl the paper.



- ④ Add a slight curl to A1 when attaching it.
- ★ Attach the triangular glue tabs so that the front side becomes convex.
- ★ Using the photo as a guide, attach in the direction of the arrow.



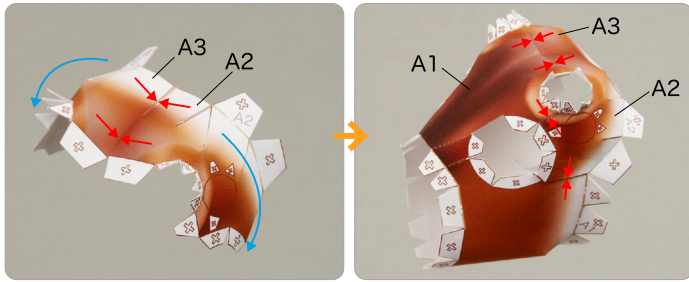
Tools	Notation Key
Scissors	 Scissors line
Paste, or woodwork glue	 Mountain fold
Stencil pen, or bodkin	 Valley fold
Ruler	 Glue spot
Pencil	 A1, B1 Parts No.

- ◆ The Assembly instructions are divided into three blocks: A (head, antler), B (front legs, body), and C (waist, hind legs, stand). Follow the instructions for each block to assemble your reindeer.
- ◆ ★ marks a basic assembly technique that remains the same regardless of the part. Instructions are printed only for the first instance.

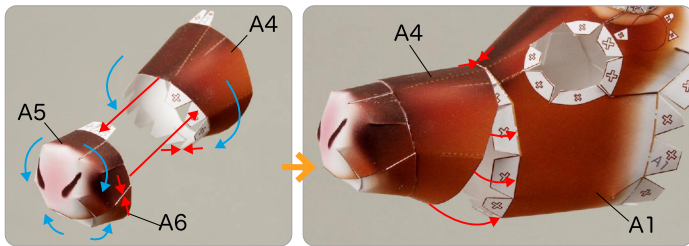
<Caution>

- ※ Keep scissors and glue away from small children.
- ※ Be careful not to cut your fingers when using scissors.

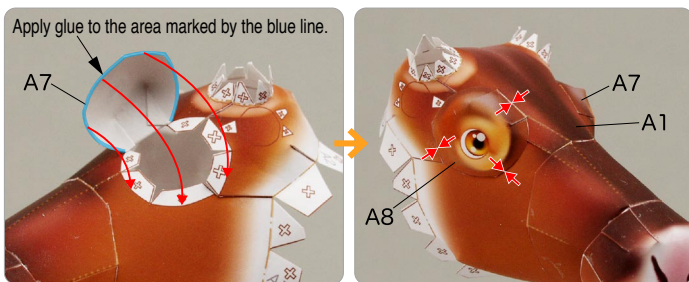
- ⑤ Attach A2 and A3, and attach them to A1.



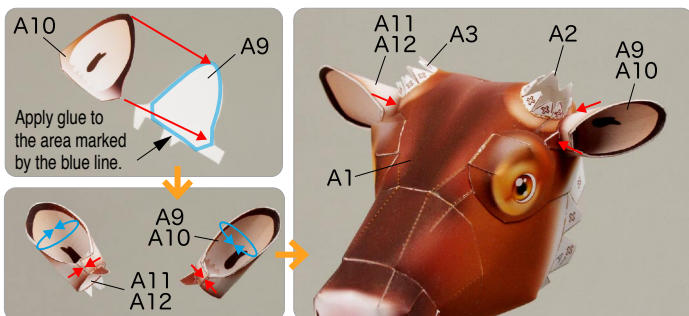
- ⑥ Attach A4, A5 and A6, and attach them to A1.



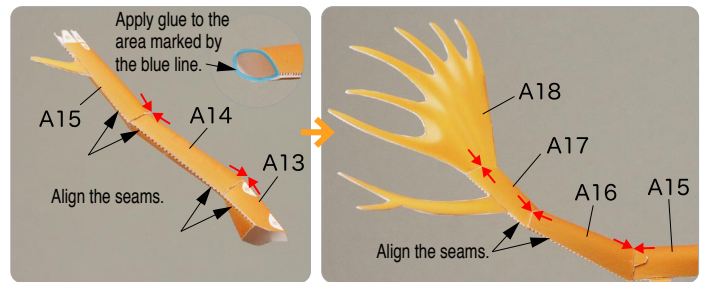
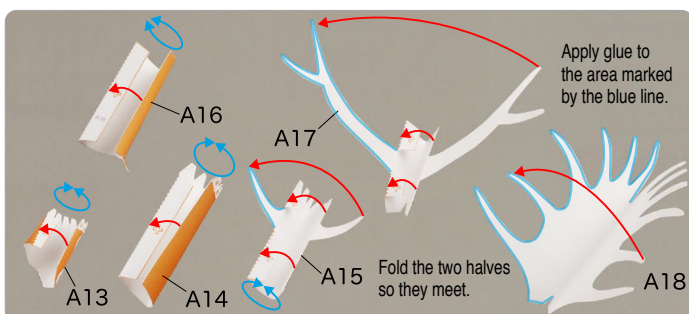
- ⑦ Assemble A7 and A8, and attach them to the head.



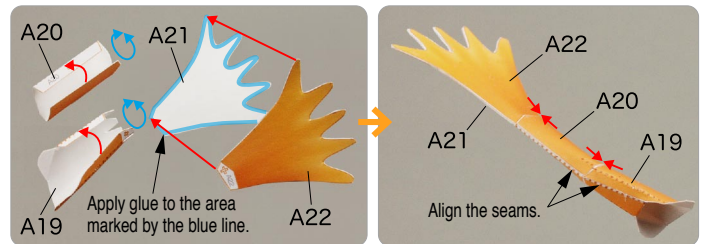
- ⑧ Attach A9 and A10, and A11 and A12, and attach them to the head.



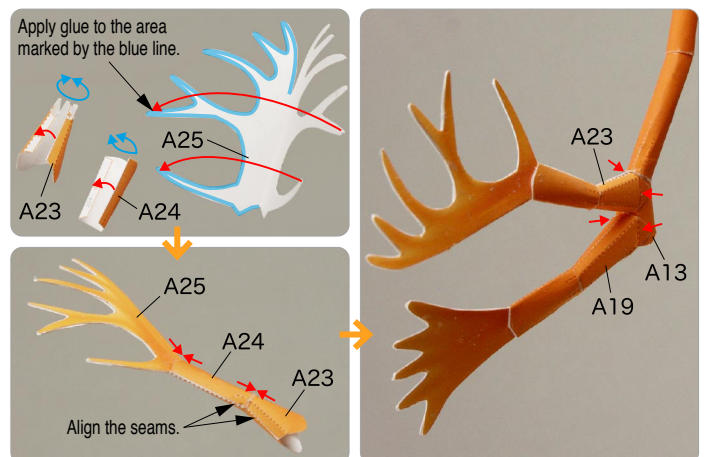
- ⑨ Assemble A13 to A18, attach them in order.



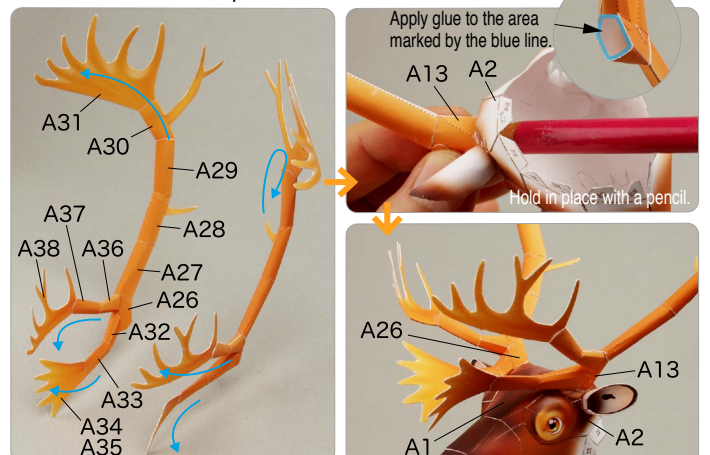
- ⑩ Assemble A19 to A22, attach them in order.



- ⑪ Assemble A23 to A25, attach them in order.
Next, attach the antlers to A13.



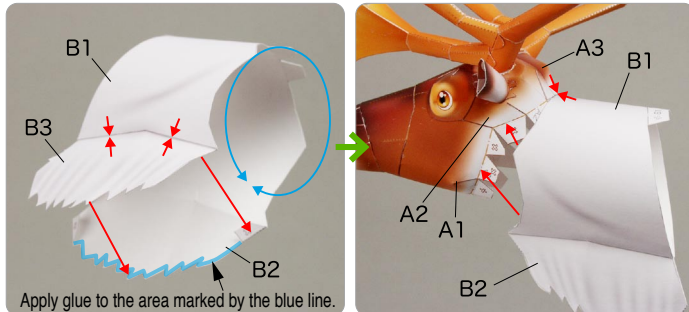
- ⑫ In the same way, assemble parts A26 through A31, A32 through A35, and A36 through A38, and add curves as shown in the photo. Next, attach the antlers to the head, and the head and antlers are complete.



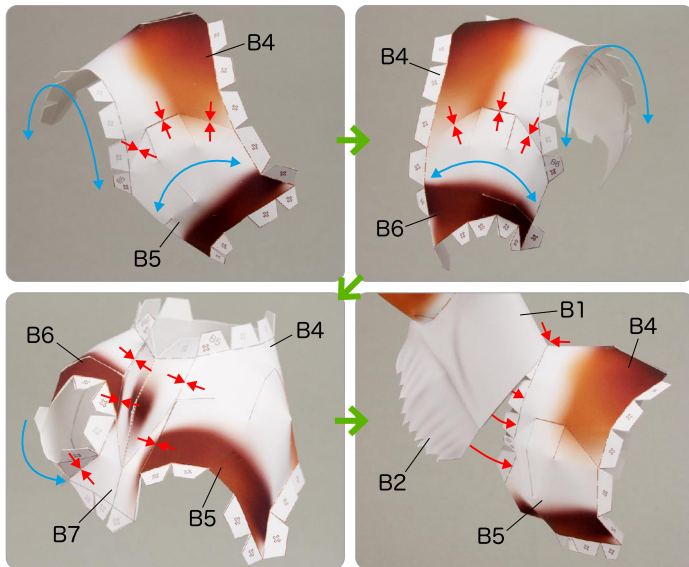
B Assemble the front legs and body

Use pattern: Page5 to Page7.

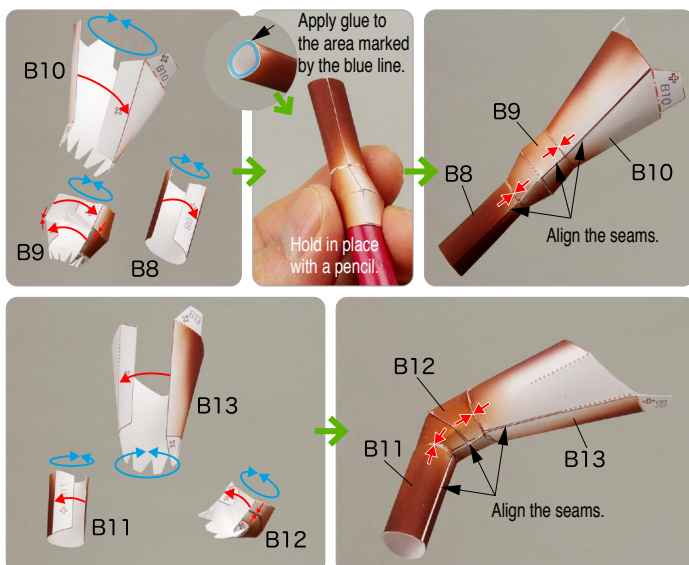
① Attach B1, B2 and B3, and attach them to the head.



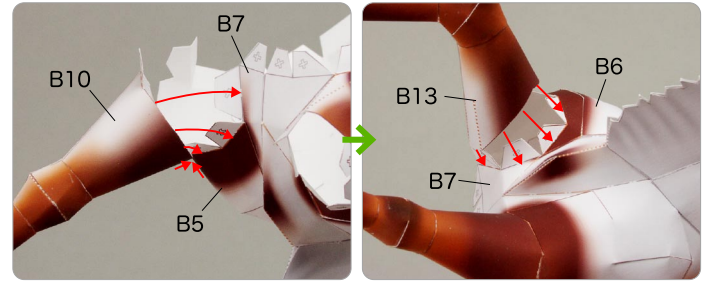
② Attach B4 to B7, and attach them to the neck.



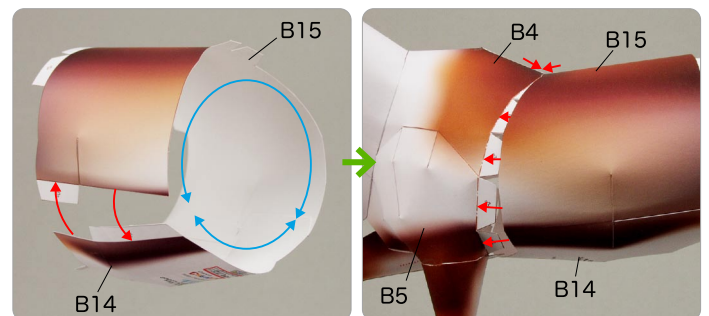
③ Attach B8, B9 and B10, and attach them. In the same way, attach B11, B12 and B13.



④ Attach the front legs to the shoulders.



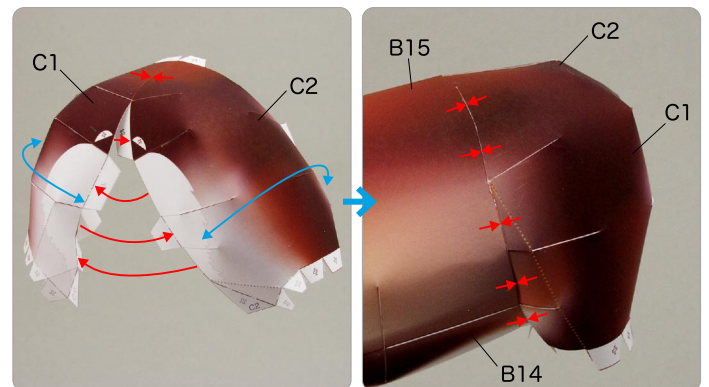
⑤ Attach B14 and B15, and attach them to the body, and the body is complete.



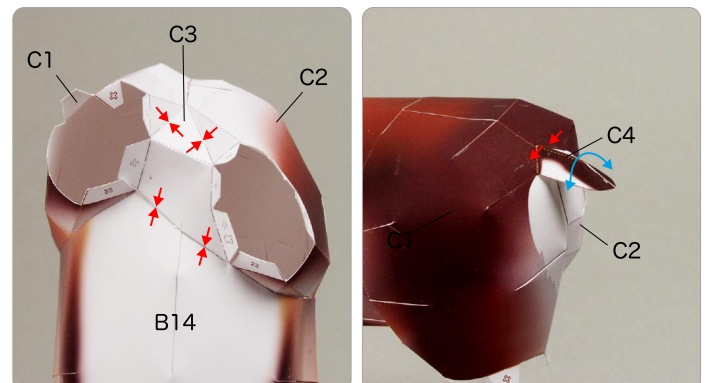
C Assemble the waist, hind legs and stand

Use pattern: Page8 to Page10.

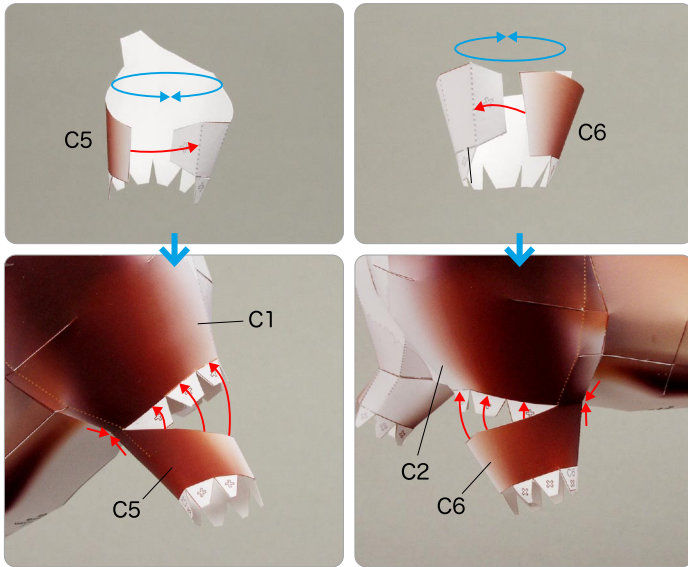
① Attach C1 and C2, and attach them to the body.



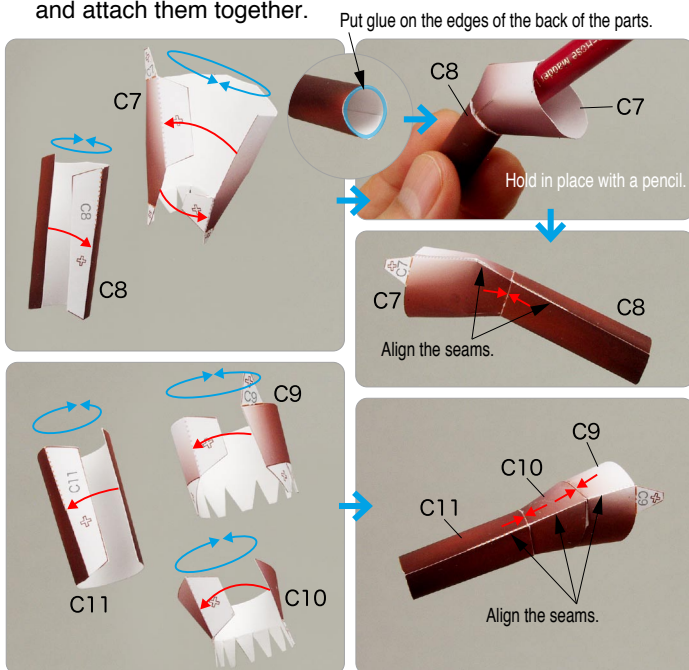
② Attach C3 to the body. Next, attach C4.



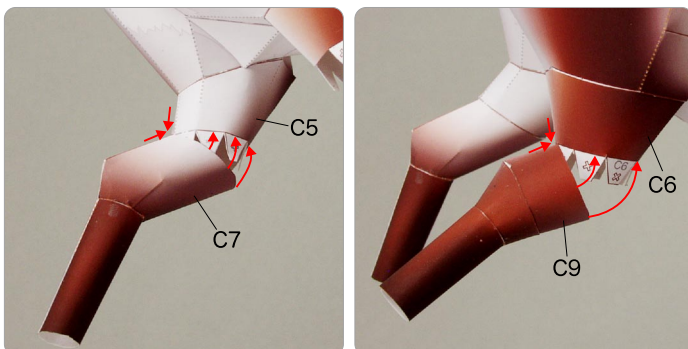
③ Assemble C5 and C6, and attach them to the body.



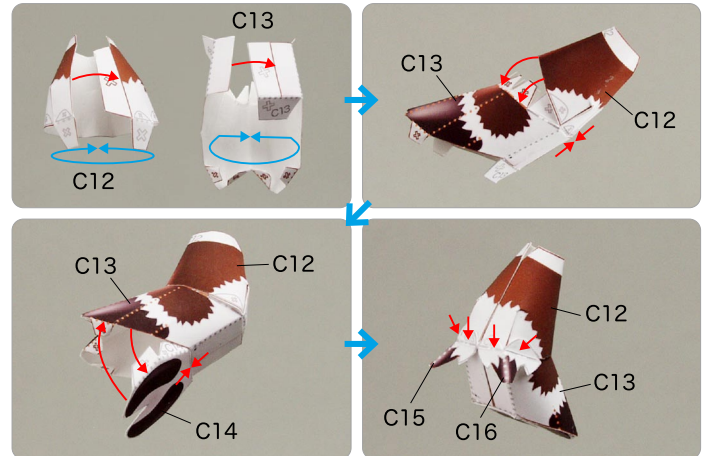
④ Assemble C7 and C8, and C9, C10 and C11, and attach them together.



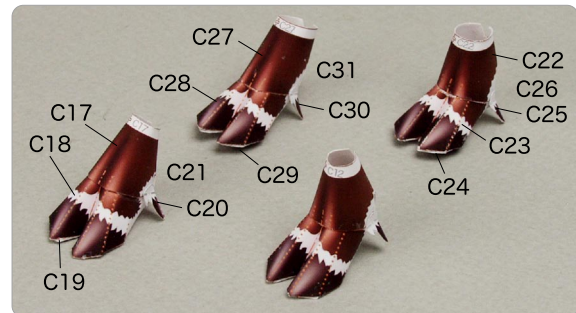
⑤ Attach the hind legs to the body.



⑥ Assemble parts C12 through C16, and attach them together.



⑦ In the same way, assemble parts C17 through C21, C22 through C26, and C27 through C31, and attach them together.



⑧ Stand the reindeer up with its hooves on the ground and glue the hooves to the legs, making sure it is balanced and won't fall over. Next, glue it to the stand, and you're done!

