

Futabasaurus : Assembly Instructions

© Canon Inc. © Y. Watanabe



PAPER CRAFT

<http://www.canon.com/c-park/en/>

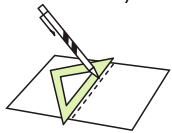


View of completed model

*This model was designed for Papercraft and may differ from the original in some respects.

Assembly Instructions : Four A4 sheets (No. 1 to No. 4)

*Build the model by carefully reading the Assembly Instructions, in the parts sheet page order.



*Hint: Trace along the folds with a ruler and an exhausted pen (no ink) to get a sharper, easier fold.

Assembly Instructions



Mountain fold(dotted line)
Make a mountain fold.



Valley fold(dashed and dotted line)
Make a valley fold.



Scissors line(solid line)
Cut along the line.



Cut in line(solid line)
Cut along the line.



Glue
The glue spot(colored dot) shows where to apply the glue.

Red dot
Glue parts with the same number together.

Green dot
Glue within the same part.

Blue dot
Glue to the rear of the other part.

Tools and materials



Scissors, set square, glue(We recommend stick glue), pencil, used ballpoint pen, toothpicks, tweezers, (useful for handling small parts)

Assembly tip



Before gluing, create the paper along mountain fold and valley fold lines and make sure rounded sections are nice and stiff.

Caution



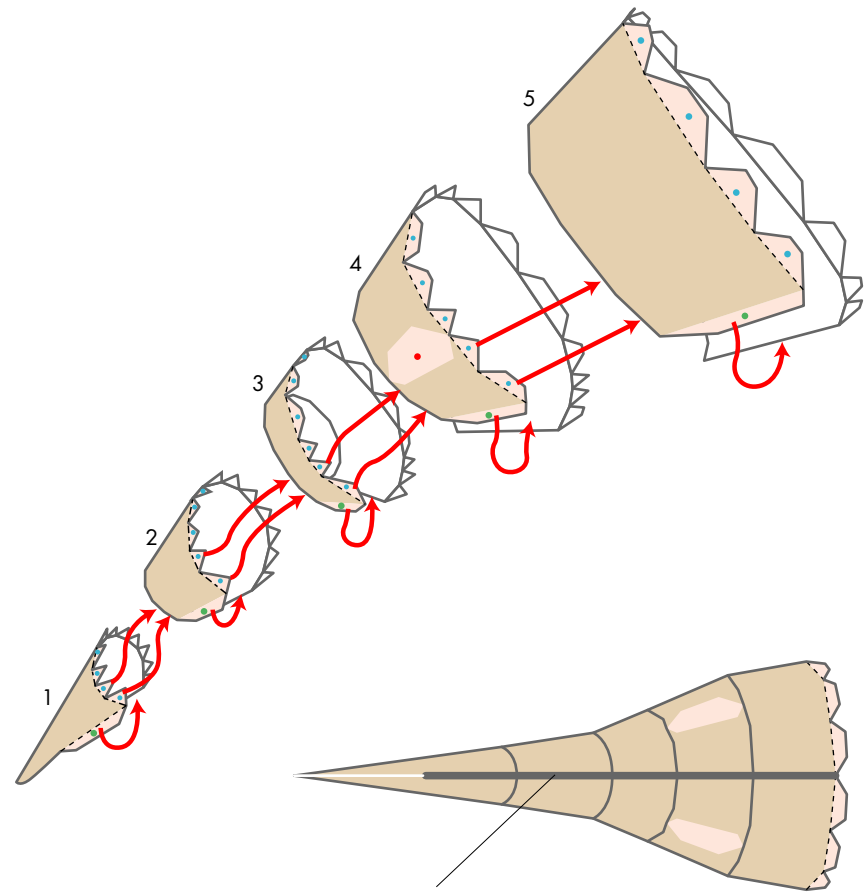
Glue, scissors and other tools may be dangerous to young children so be sure to keep them out of the reach of young children.

Before starting assembly: Writing the number of each section on its back side before cutting out the sections is highly recommended.
(* This way, you can be sure which section is which even after cutting out the sections.)

→ Indicates where sections should be glued together.

Assembling the tail and the lower back region : Parts 1 - 5

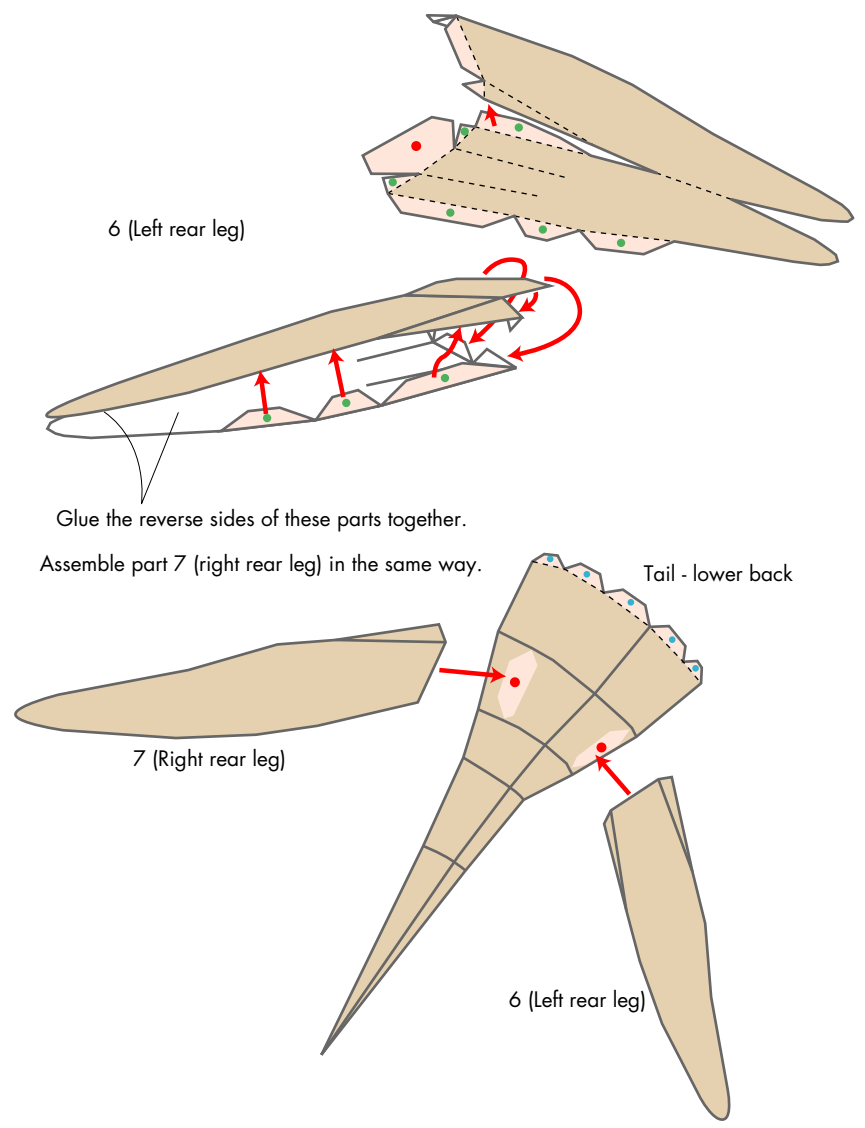
Glue each part into a tubular shape and attach the parts to each other in part-number order, from 1 through 5.



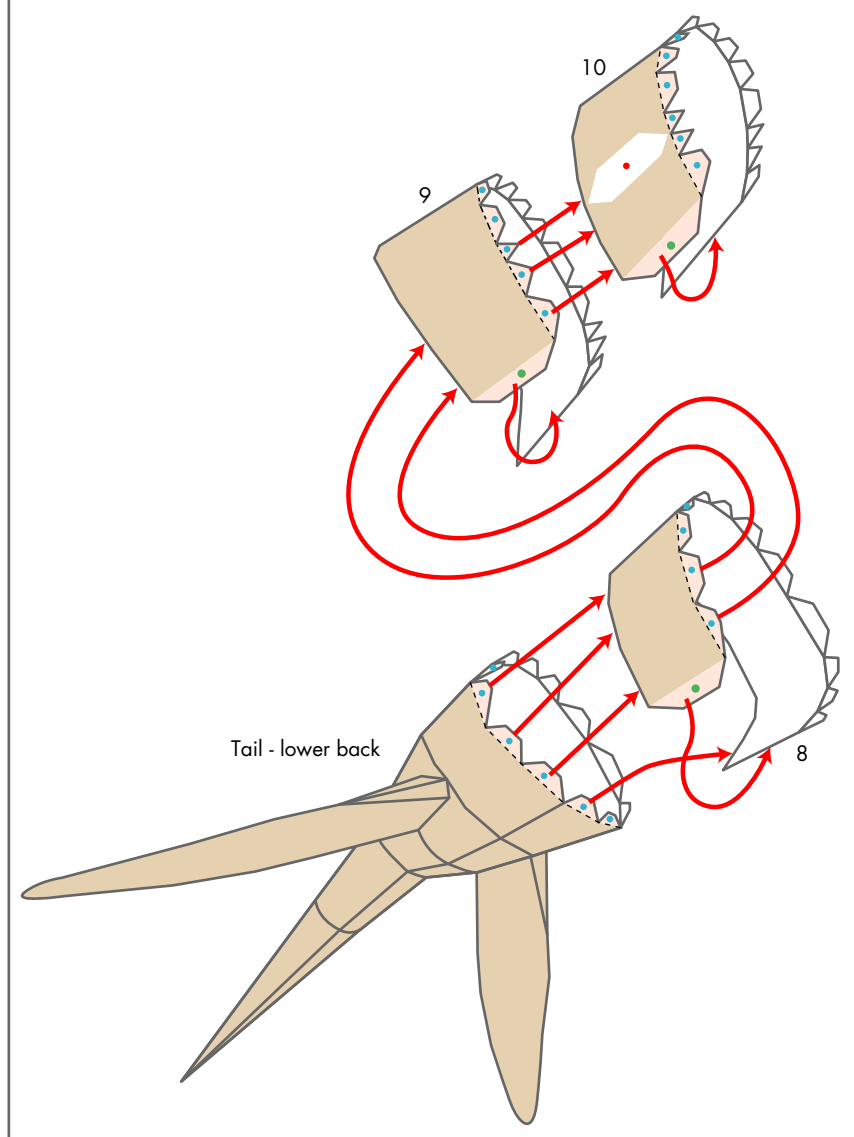
Glue the pieces together so that the seams line up

Futabasaurus : Assembly Instructions

Assembling the rear legs and the lower back region : Parts 6, 7



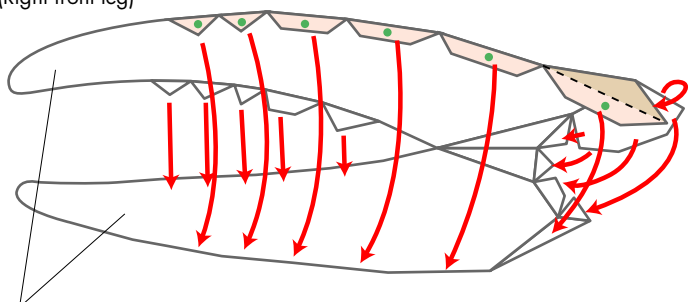
Assembling the body : Parts 8 - 10



Futabasaurus : Assembly Instructions

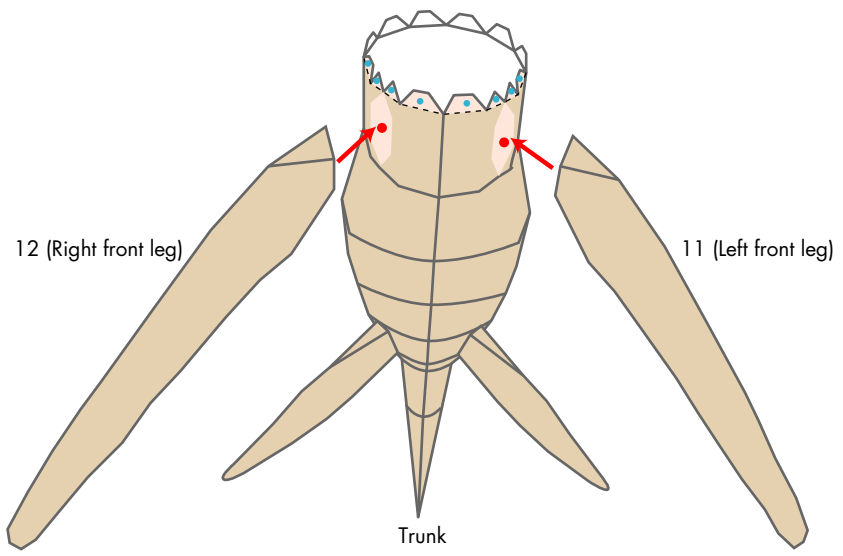
Assembling the front legs : Parts 11, 12

12 (Right front leg)

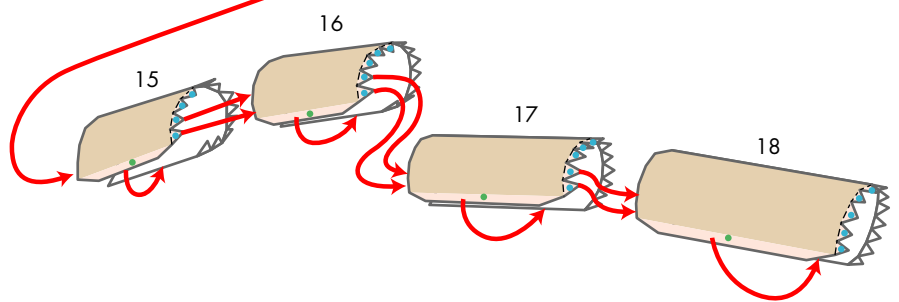
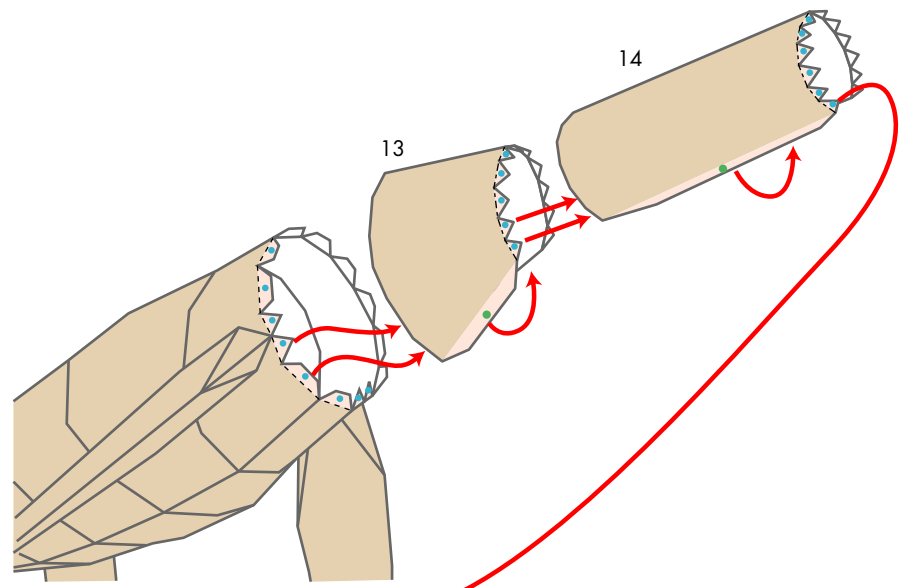


Glue the reverse sides of these parts together.

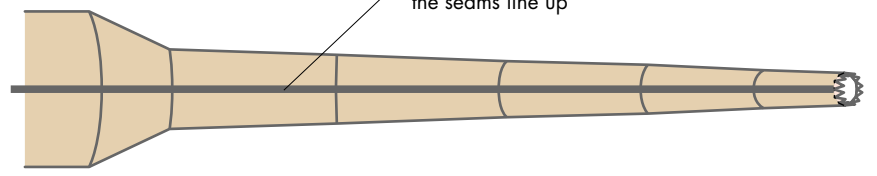
Assemble part 11 (left front leg) in the same way.



Assembling the neck : Parts 13 - 18

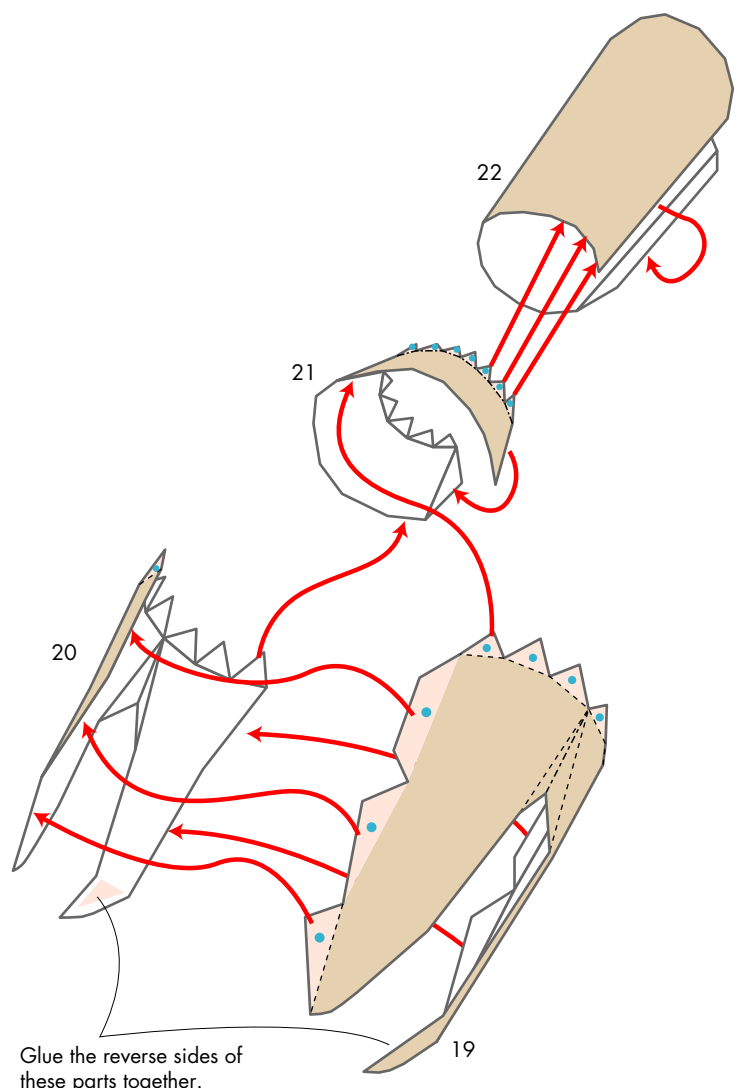


Glue the pieces together so that the seams line up



Futabasaurus : Assembly Instructions

Assembling the head and the neck : Parts 19 - 22



Assembling the head, the neck, and the label

