

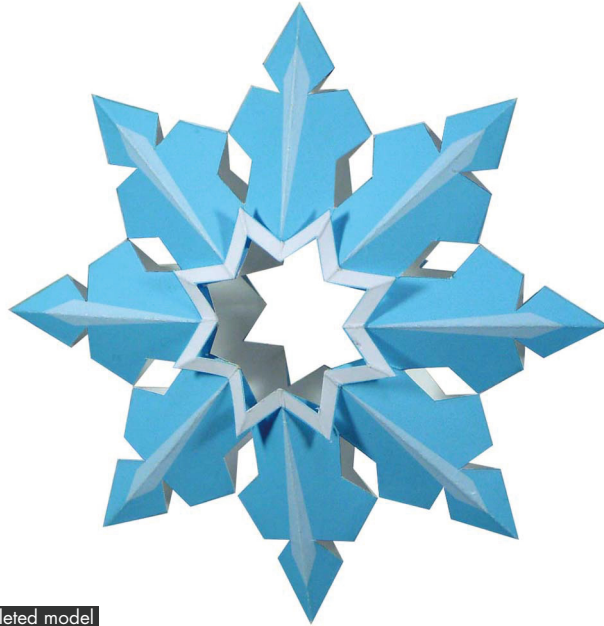
# Christmas-tree ornaments (snowflake B): Assembly Instructions

© Canon Inc. © Takako Takahashi



## PAPER CRAFT

<http://www.canon.com/c-park/en/>



View of completed model

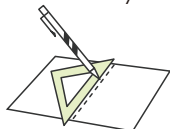
### Christmas-tree ornaments (snowflake B)

The decorations hung on a Christmas tree are referred to as Christmas-tree ornaments. The wide range of popular ornaments includes the star attached to the top of the tree (representing the star said to have served as notice of Christ's birth), angels, candy canes, candles, lace, Santa Claus figurines, snowmen, and more. Use this kit to build snowflakes that can be hung the Christmas tree to brighten it up. It comes in five fun color variations.

■ Parts list (pattern): Five A4 sheets (No.3 to No.7)

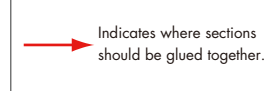
■ No. of Parts: Four parts x 5 sets Total: 20

\*Build the model by carefully reading the Assembly Instructions, in the parts sheet page order.



\*Hint: Trace along the folds with a ruler and an exhausted pen (no ink) to get a sharper, easier fold.

Before starting assembly: Writing the number of each section on its back side before cutting out the sections is highly recommended. (\* This way, you can be sure which section is which even after cutting out the sections.)

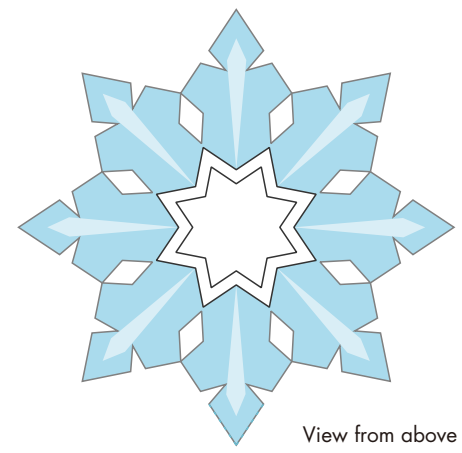
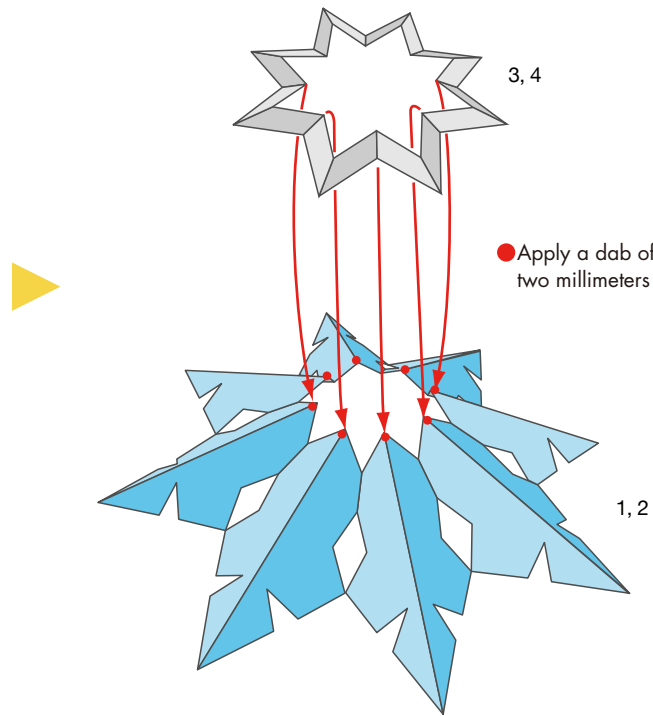
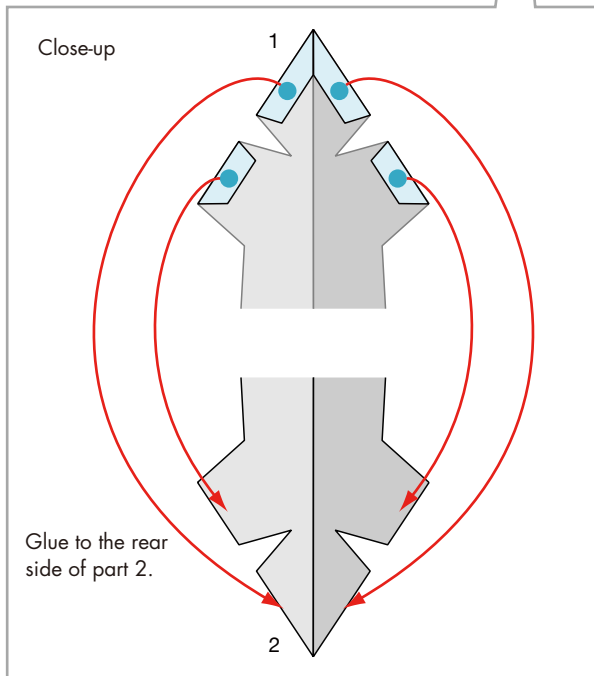
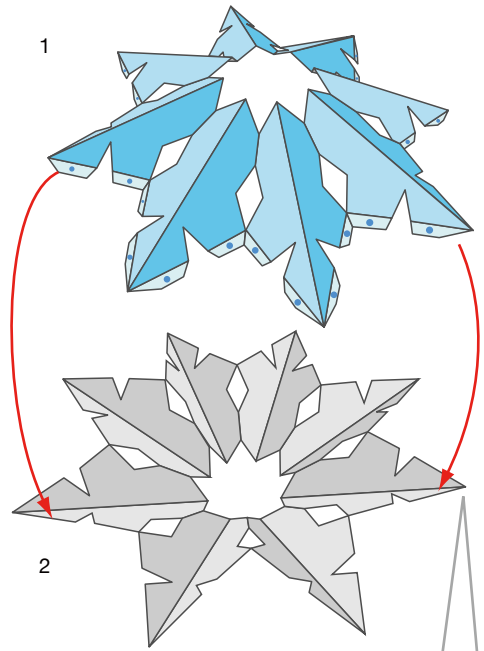


Whether the parts ultimately need to be folded into "A" or "V" shapes, fold all the parts you'll need to cut out into an "A" shape before cutting them out. After cutting out all the parts, fold them into "A" or "V" shapes, as designated to adjust the shape.

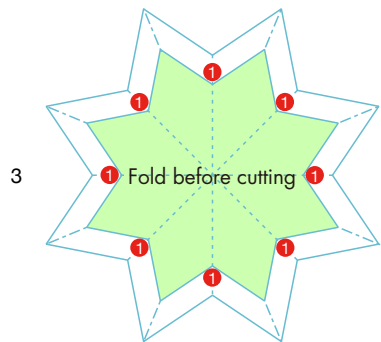
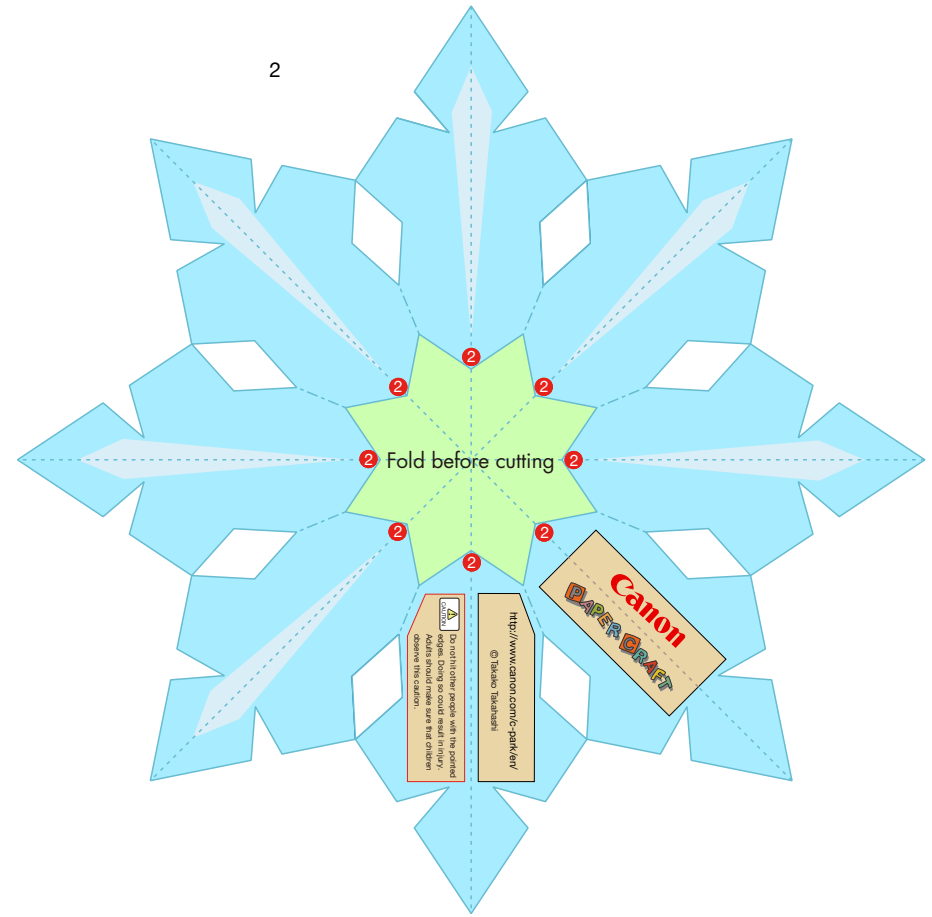
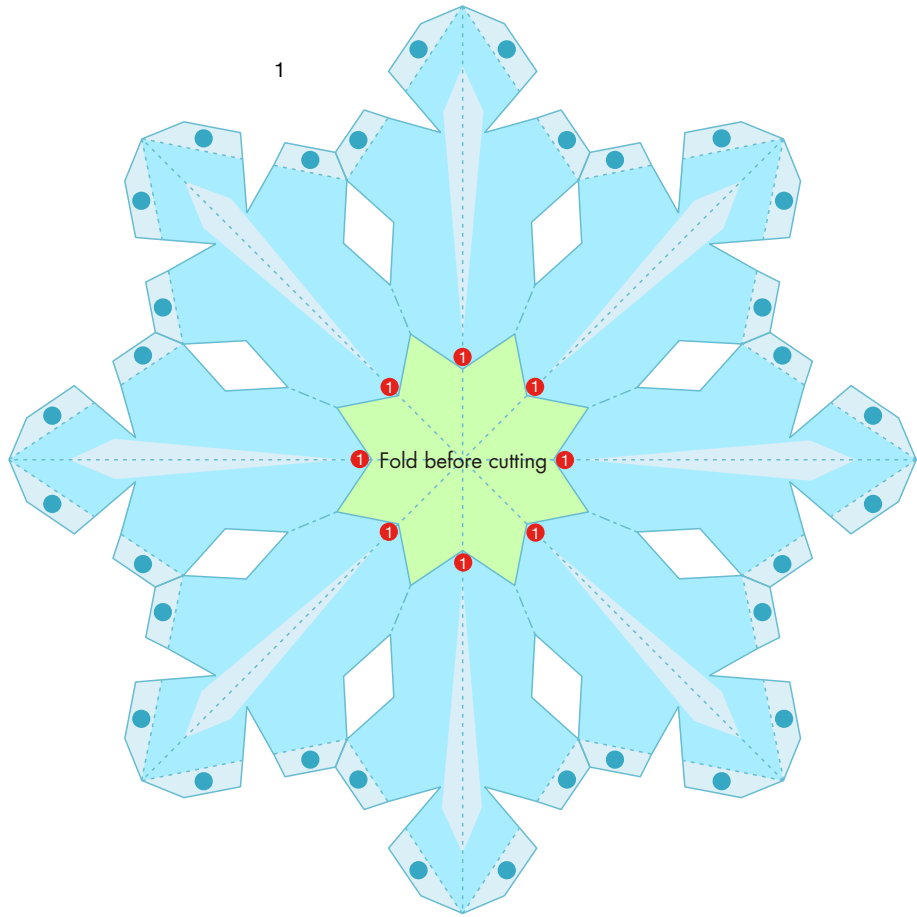
### Assembly Instructions

	<b>Mountain fold(dotted line)</b> Make a mountain fold.	<p>The glue spot(colored dot) shows where to apply the glue.</p> <ul style="list-style-type: none"> <li>● <b>Glue spot(Red dot)</b> Glue parts with the same number together.</li> <li>● <b>Glue spot(Green dot)</b> Glue within the same part.</li> <li>● <b>Glue spot(Blue dot)</b> Glue to the rear of the other part.</li> </ul>
	<b>Valley fold(dashed and dotted line)</b> Make a valley fold.	
	<b>Scissors line(solid line)</b> Cut along the line.	
	<b>Cut in line(solid line)</b> Cut along the line.	
<b>Tools and materials</b>		Scissors, set square, glue(We recommend stick glue), pencil, used ballpoint pen, toothpicks, tweezers, (useful for handling small parts)
<b>Assembly tip</b>		Before gluing, crease the paper along mountain fold and valley fold lines and make sure rounded sections are nice and stiff.
<b>Caution</b>		Glue, scissors and other tools may be dangerous to young children so be sure to keep them out of the reach of young children.

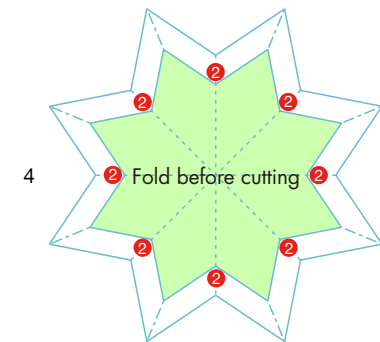
# Christmas-tree ornaments (snowflake B): Assembly Instructions



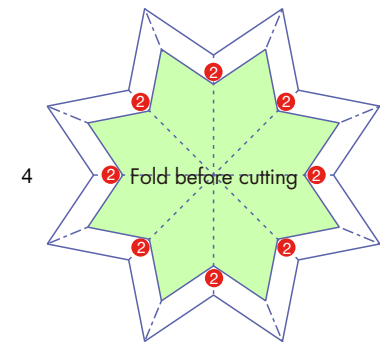
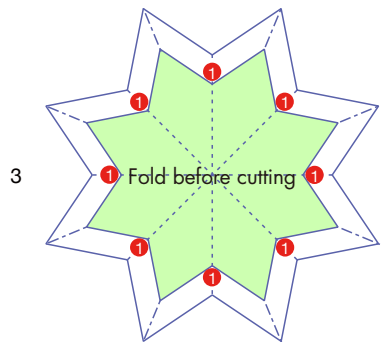
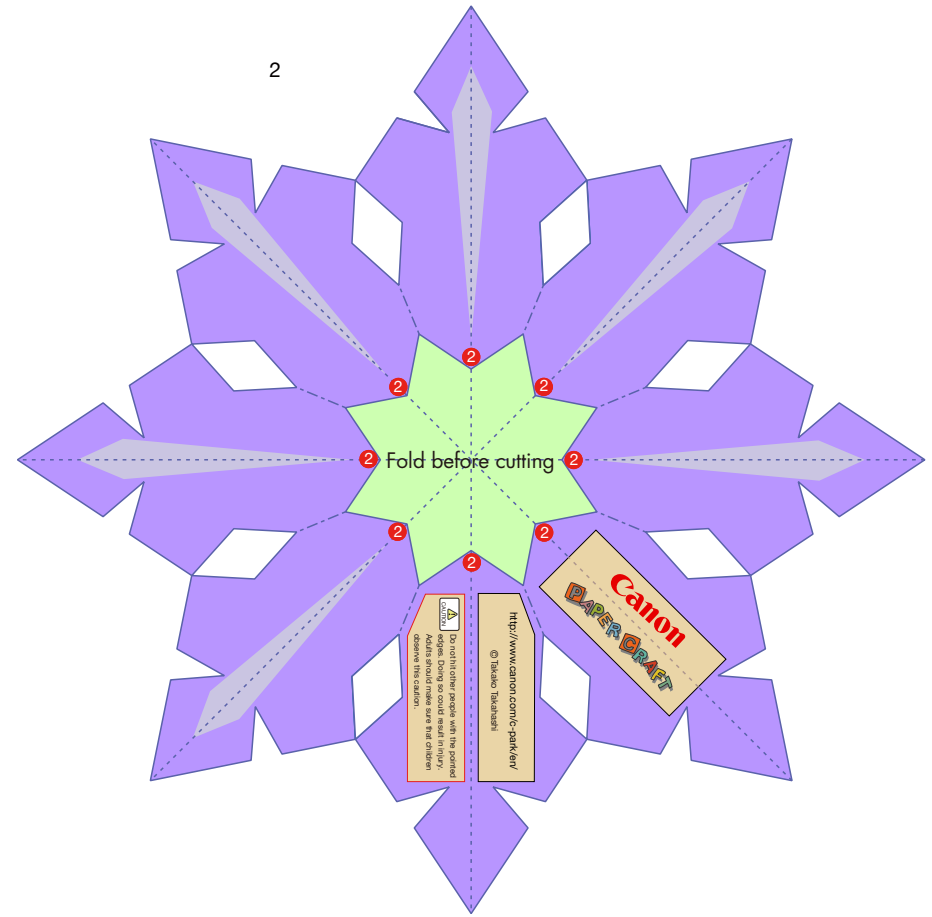
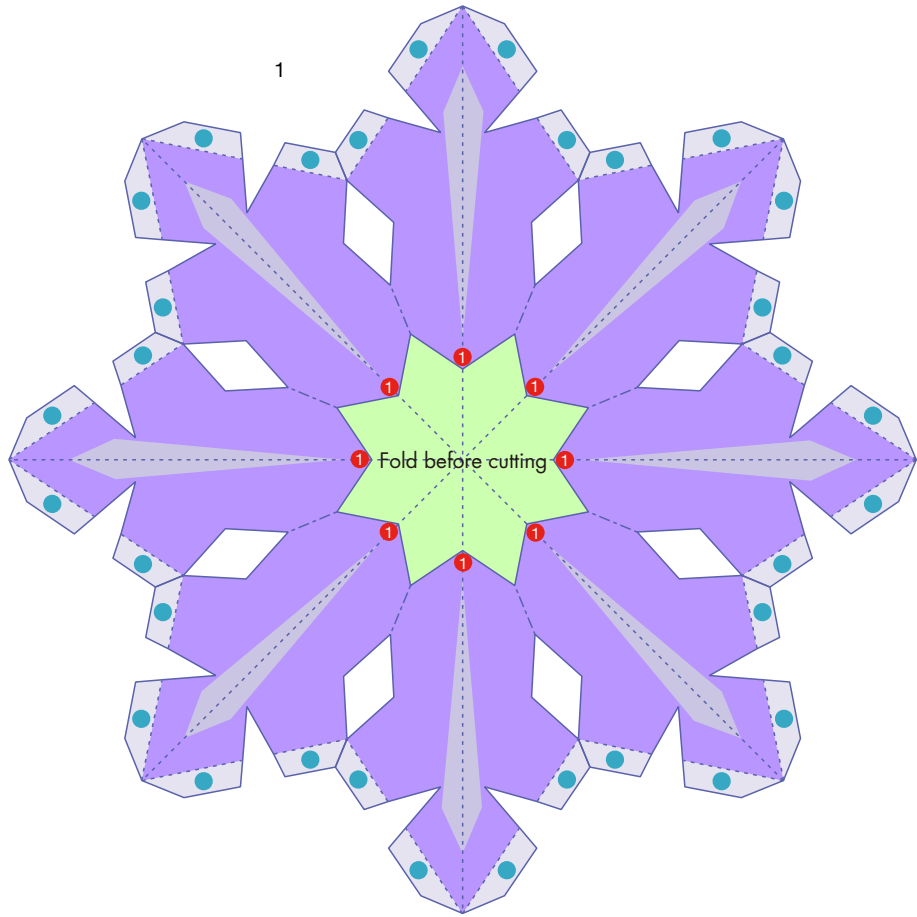
# Christmas-tree ornaments (snowflake B): Pattern



For the shaded cutting parts, whether the parts ultimately need to be folded into "A" or "V" shapes, fold all the parts you'll need to cut out into an "A" shape before cutting them out. After cutting out all the parts, fold them into "A" or "V" shapes, as designated to adjust the shape.

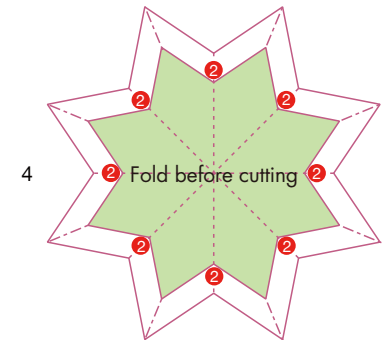
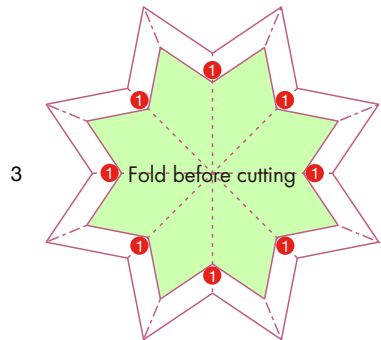
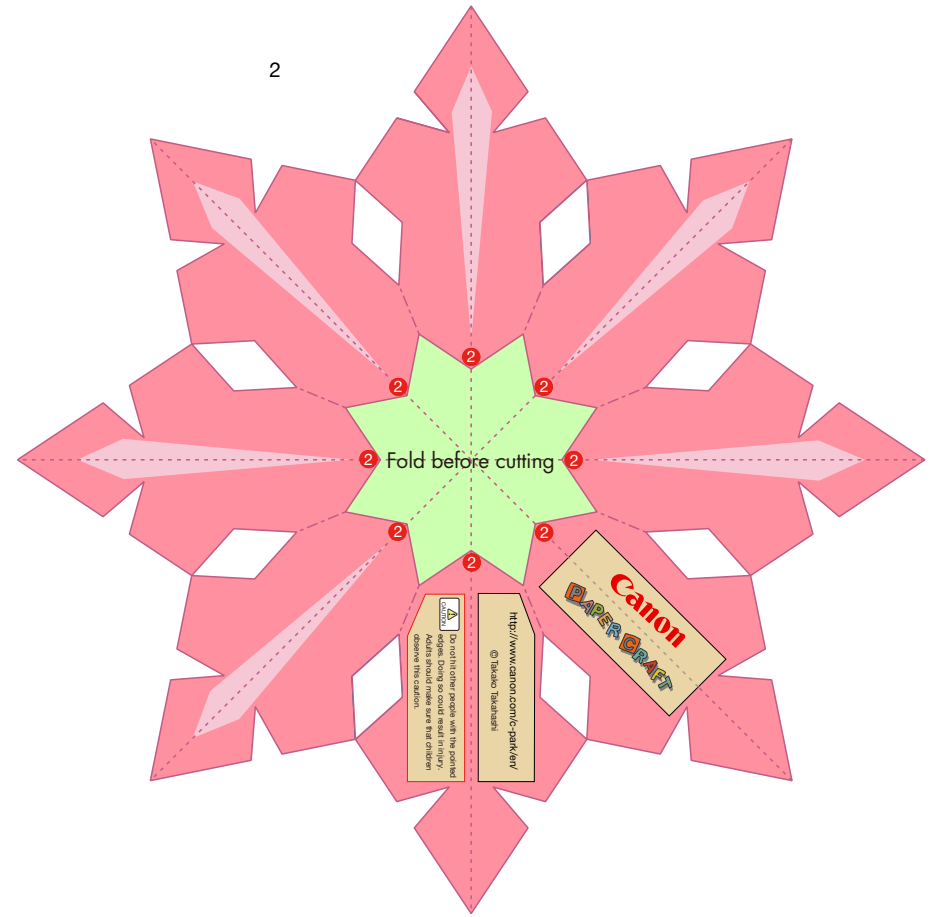
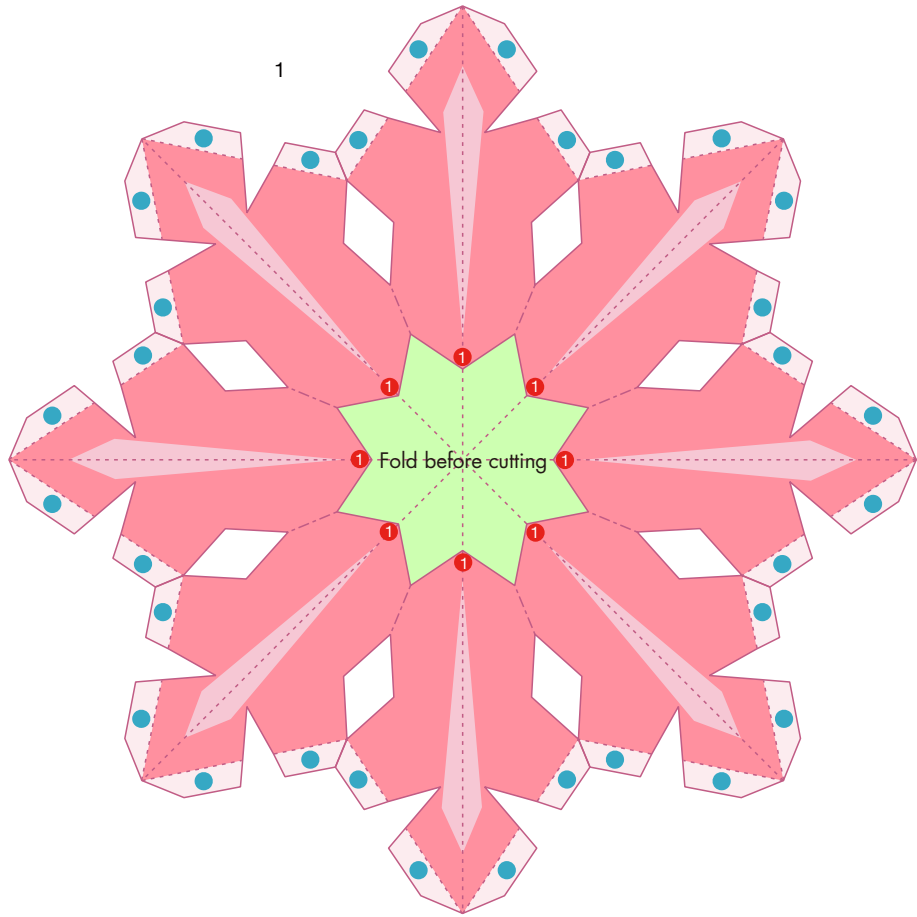


# Christmas-tree ornaments (snowflake B): Pattern



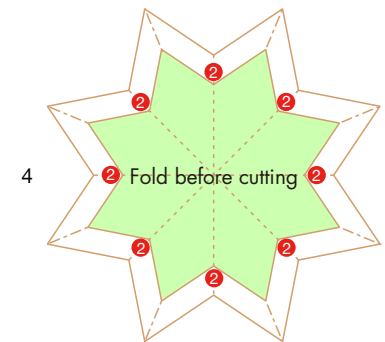
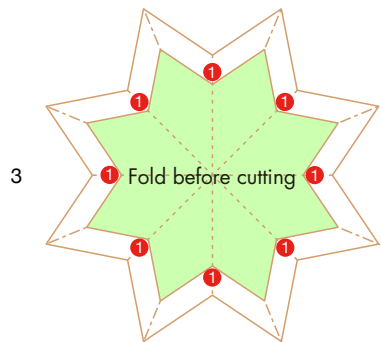
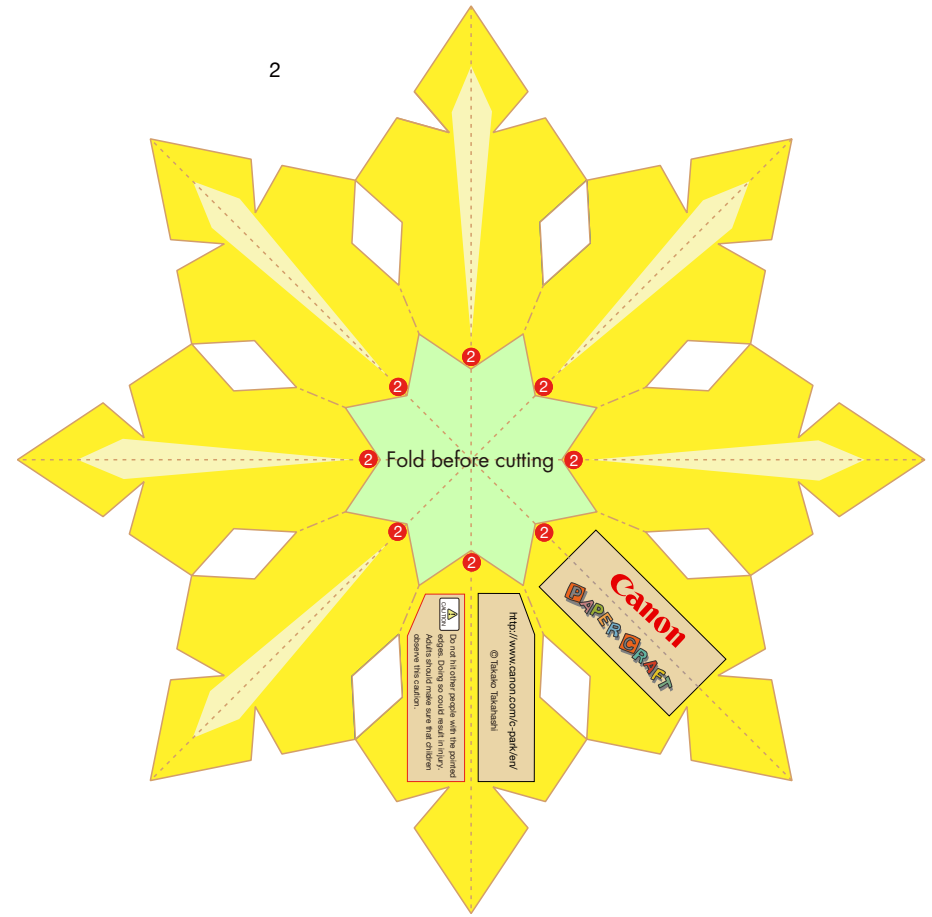
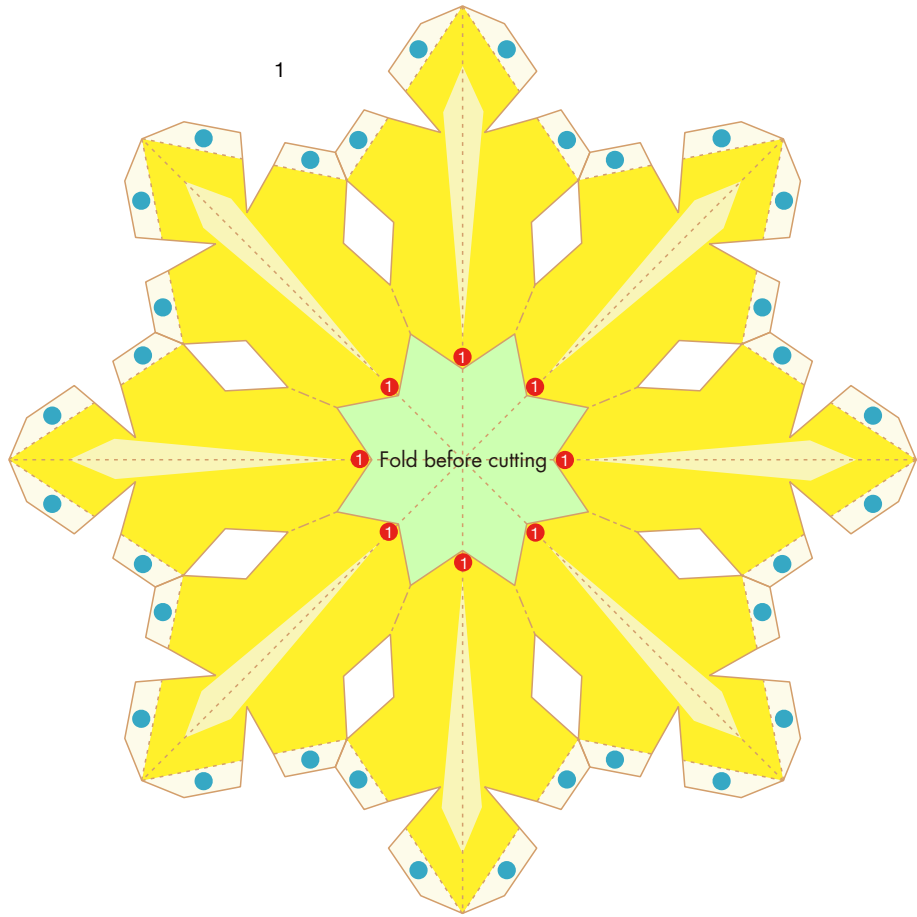
For the shaded cutting parts, whether the parts ultimately need to be folded into "A" or "V" shapes, fold all the parts you'll need to cut out into an "A" shape before cutting them out. After cutting out all the parts, fold them into "A" or "V" shapes, as designated to adjust the shape.

# Christmas-tree ornaments (snowflake B): Pattern



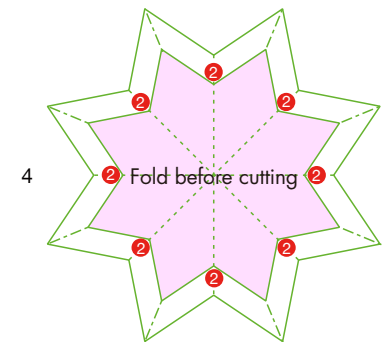
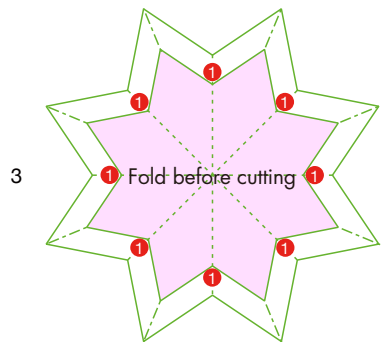
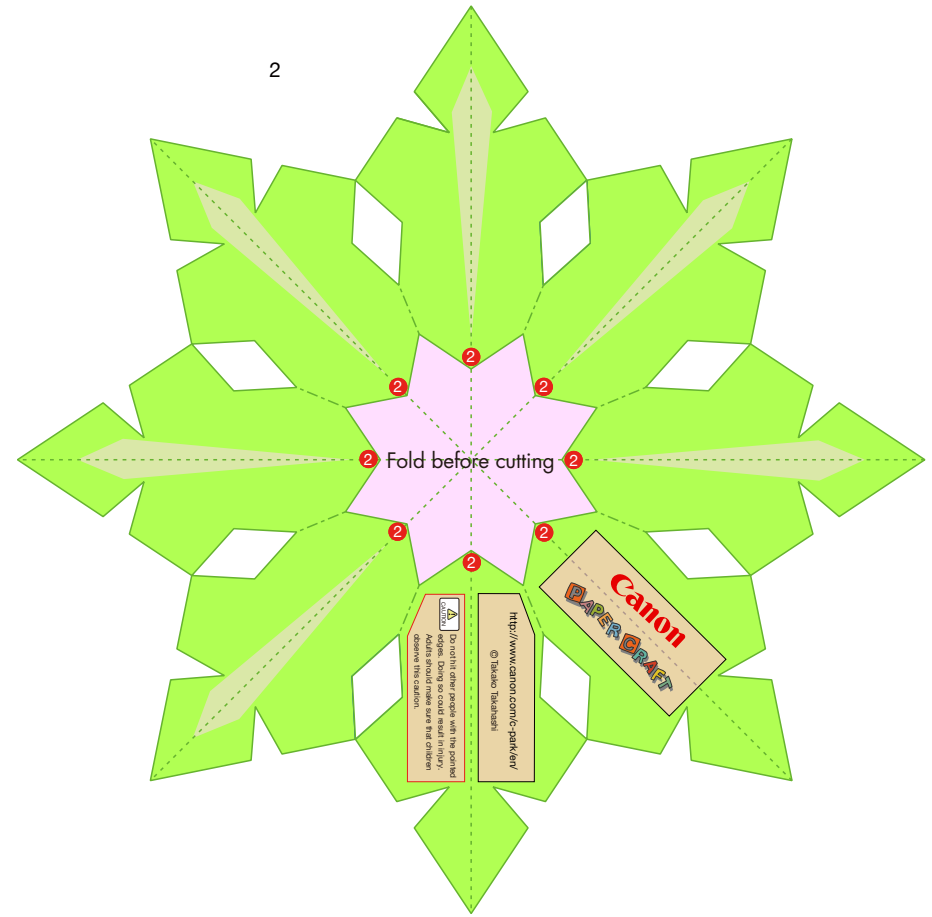
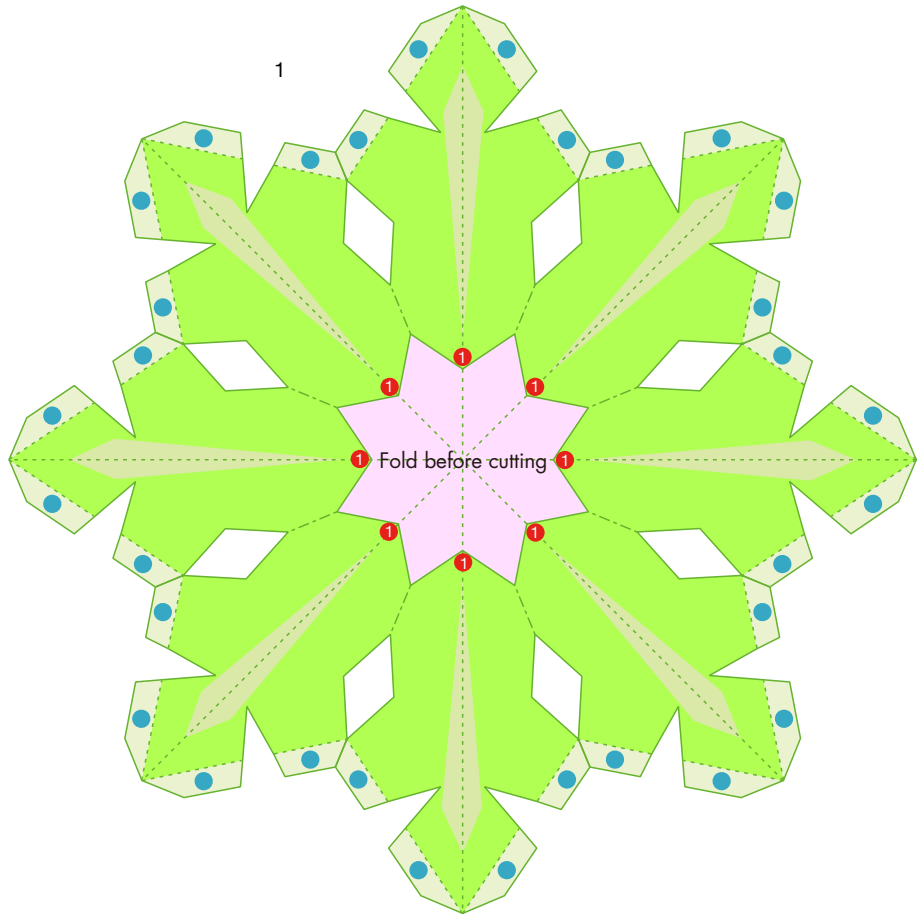
For the shaded cutting parts, whether the parts ultimately need to be folded into "A" or "V" shapes, fold all the parts you'll need to cut out into an "A" shape before cutting them out. After cutting out all the parts, fold them into "A" or "V" shapes, as designated to adjust the shape.

# Christmas-tree ornaments (snowflake B): Pattern



For the shaded cutting parts, whether the parts ultimately need to be folded into "A" or "V" shapes, fold all the parts you'll need to cut out into an "A" shape before cutting them out. After cutting out all the parts, fold them into "A" or "V" shapes, as designated to adjust the shape.

# Christmas-tree ornaments (snowflake B): Pattern



For the shaded cutting parts, whether the parts ultimately need to be folded into "A" or "V" shapes, fold all the parts you'll need to cut out into an "A" shape before cutting them out. After cutting out all the parts, fold them into "A" or "V" shapes, as designated to adjust the shape.