

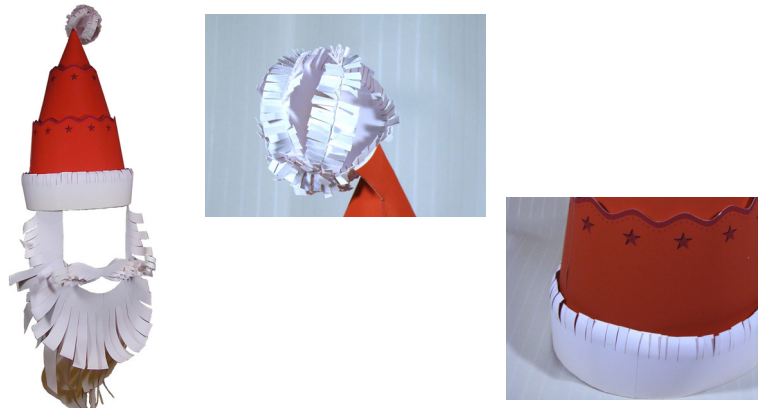
# Santa's hat (Christmas): Assembly Instructions

© Canon Inc. © Takako Takahashi



## PAPER CRAFT

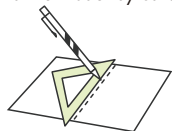
<http://www.canon.com/c-park/en/>



View of completed model

### Assembly Instructions: Five A4 sheets (No.1 to No.5)

\*Build the model by carefully reading the Assembly Instructions, in the parts sheet page order.



\*Hint: Trace along the folds with a ruler and an exhausted pen (no ink) to get a sharper, easier fold.

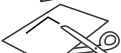
### Assembly Instructions



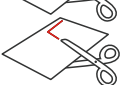
**Mountain fold(dotted line)**  
Make a mountain fold.



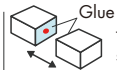
**Valley fold(dashed and dotted line)**  
Make a valley fold.



**Scissors line(solid line)**  
Cut along the line.



**Cut in line(solid line)**  
Cut along the line.



**Glue**  
The glue spot(colored dot) shows where to apply the glue.



**Glue spot(Red dot)**  
Glue parts with the same number together.



**Glue spot(Green dot)**  
Glue within the same part.



**Glue spot(Blue dot)**  
Glue to the rear of the other part.

#### Tools and materials



Scissors, set square, glue(We recommend stick glue), pencil, used ballpoint pen, toothpicks, tweezers, (useful for handling small parts)

#### Assembly tip



Before gluing, crease the paper along mountain fold and valley fold lines and make sure rounded sections are nice and stiff.

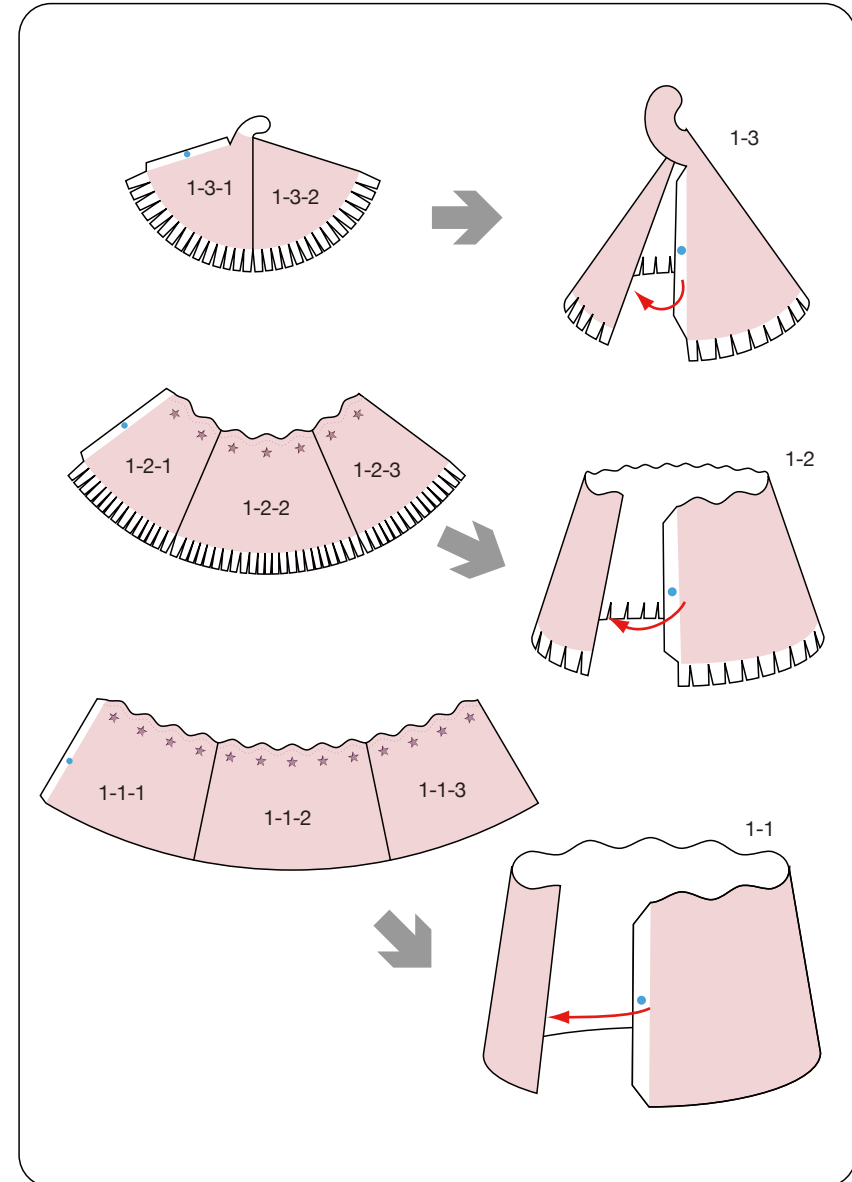
#### Caution



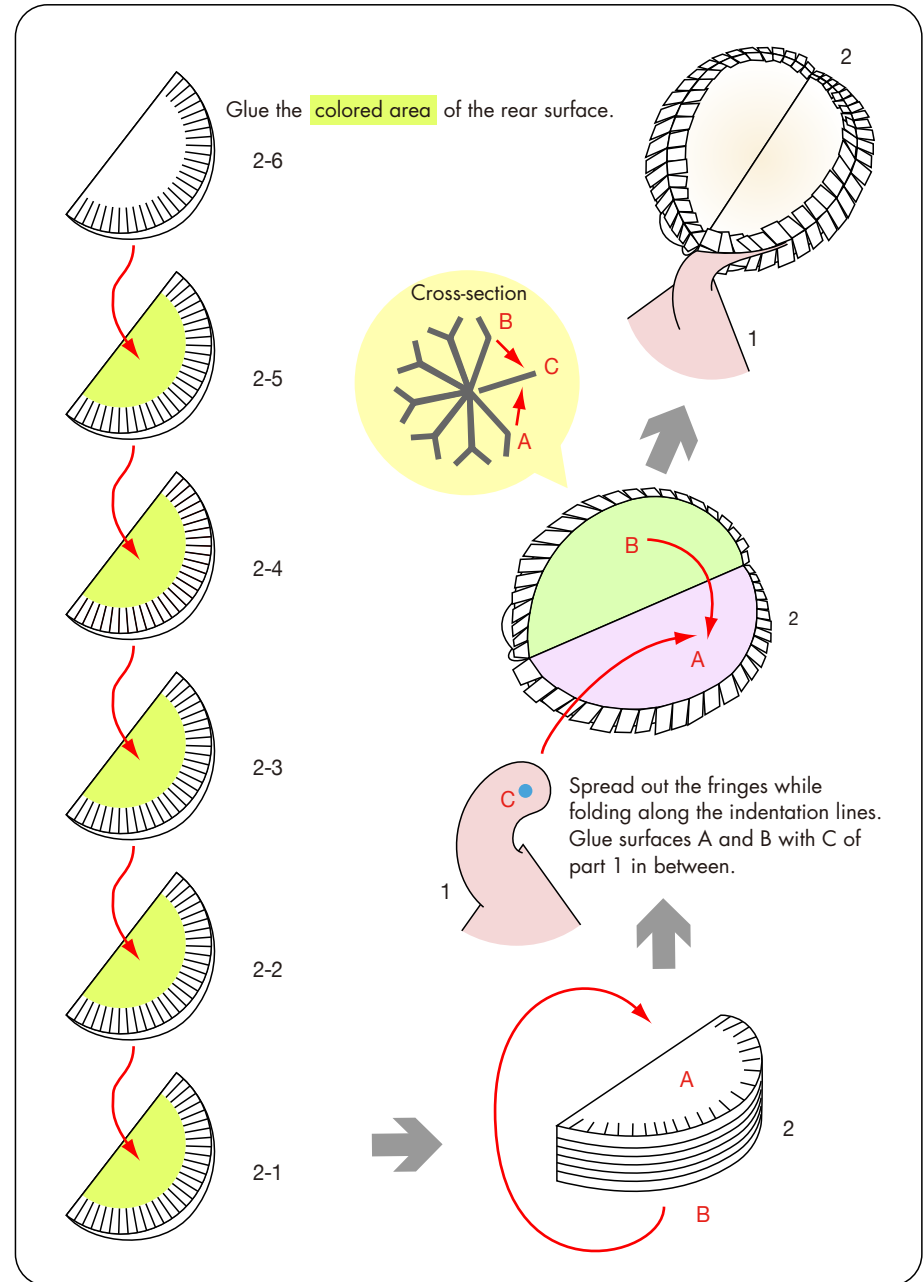
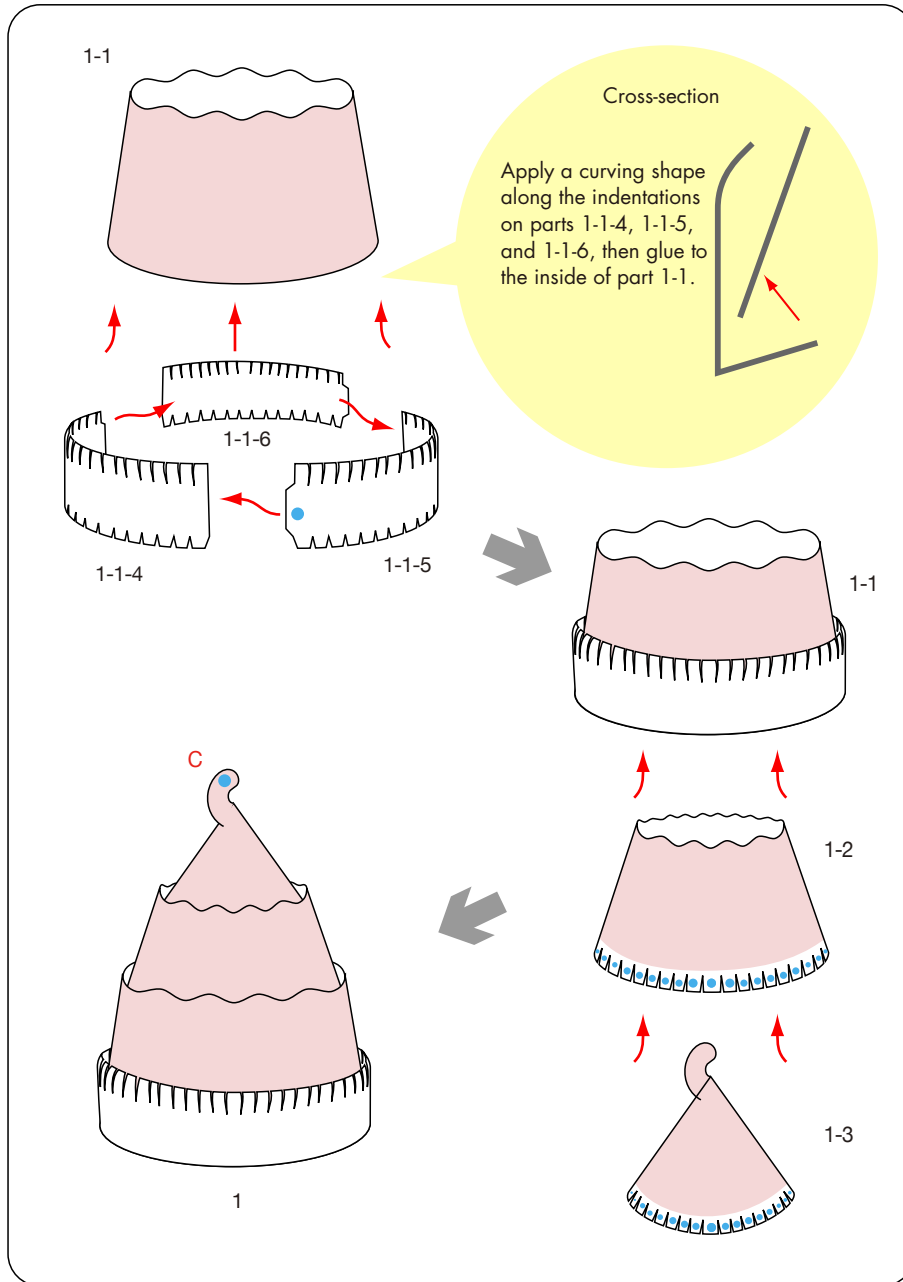
Glue, scissors and other tools may be dangerous to young children so be sure to keep them out of the reach of young children.

Before starting assembly: Writing the number of each section on its back side before cutting out the sections is highly recommended.  
(\* This way, you can be sure which section is which even after cutting out the sections.)

→ Indicates where sections should be glued together.

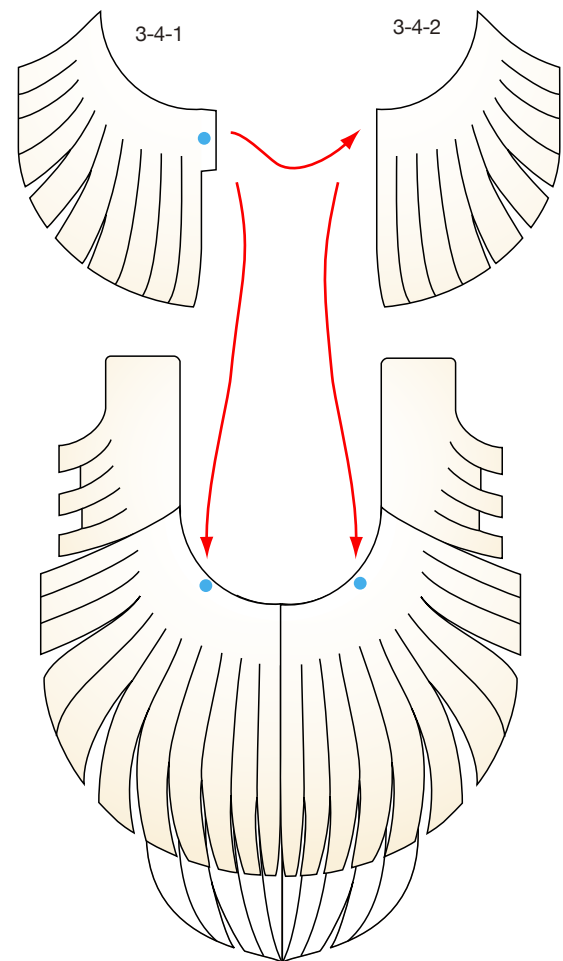
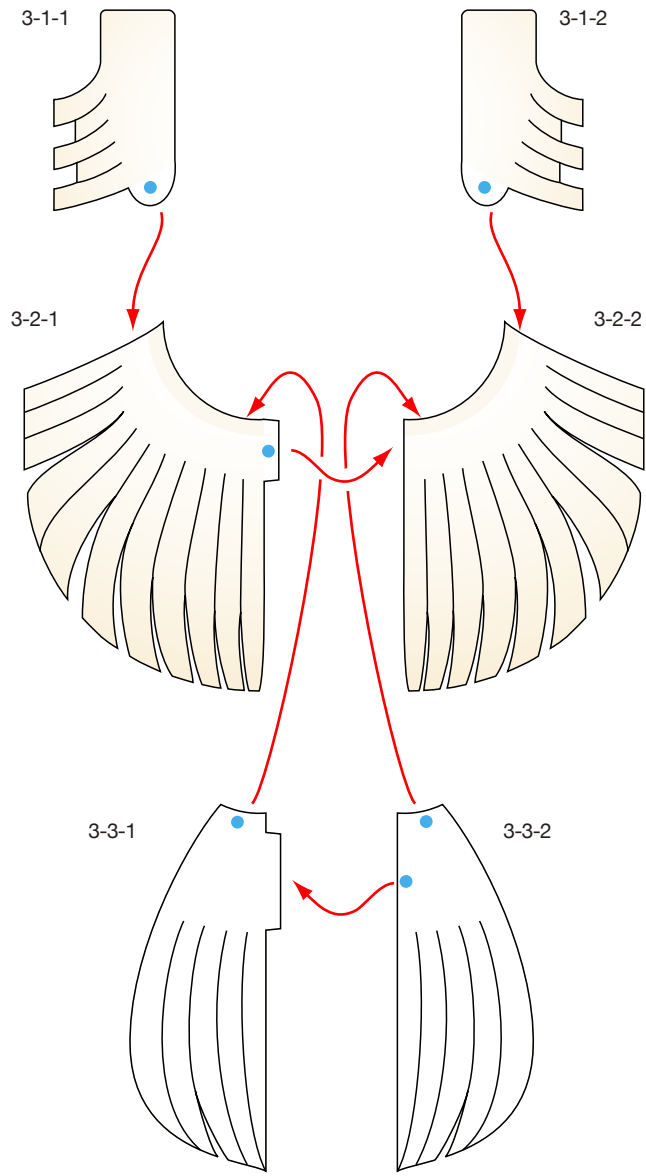


# Santa's hat (Christmas): Assembly Instructions

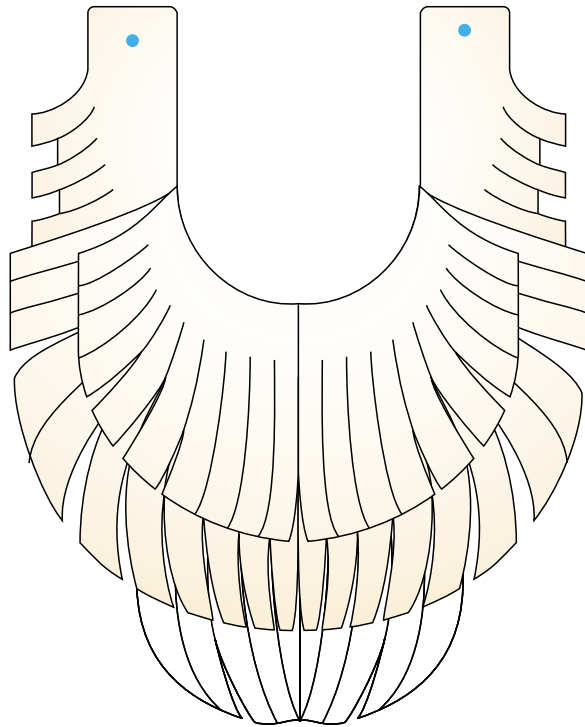


# Santa's hat (Christmas): Assembly Instructions

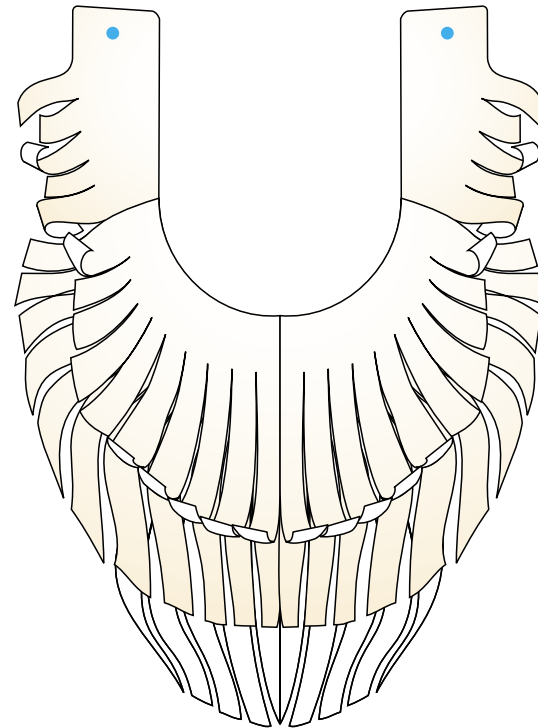
© Canon Inc. © Takako Takahashi



3

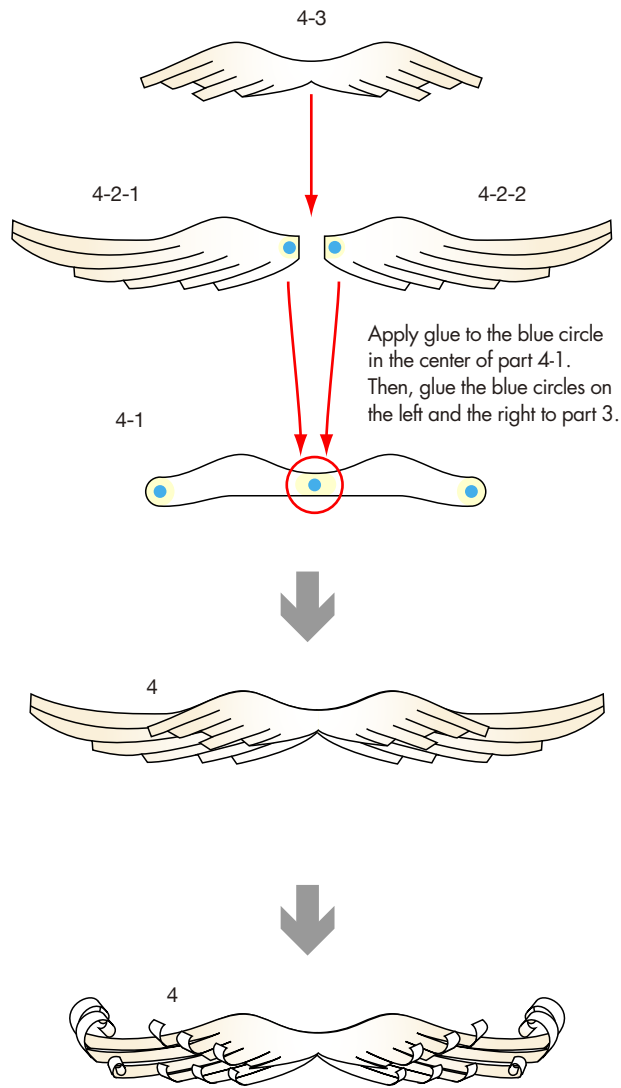


3



Use a round pencil or similar item to apply a curve to the parts.

# Santa's hat (Christmas): Assembly Instructions



Use a round pencil or similar item to apply a curve to the parts.

