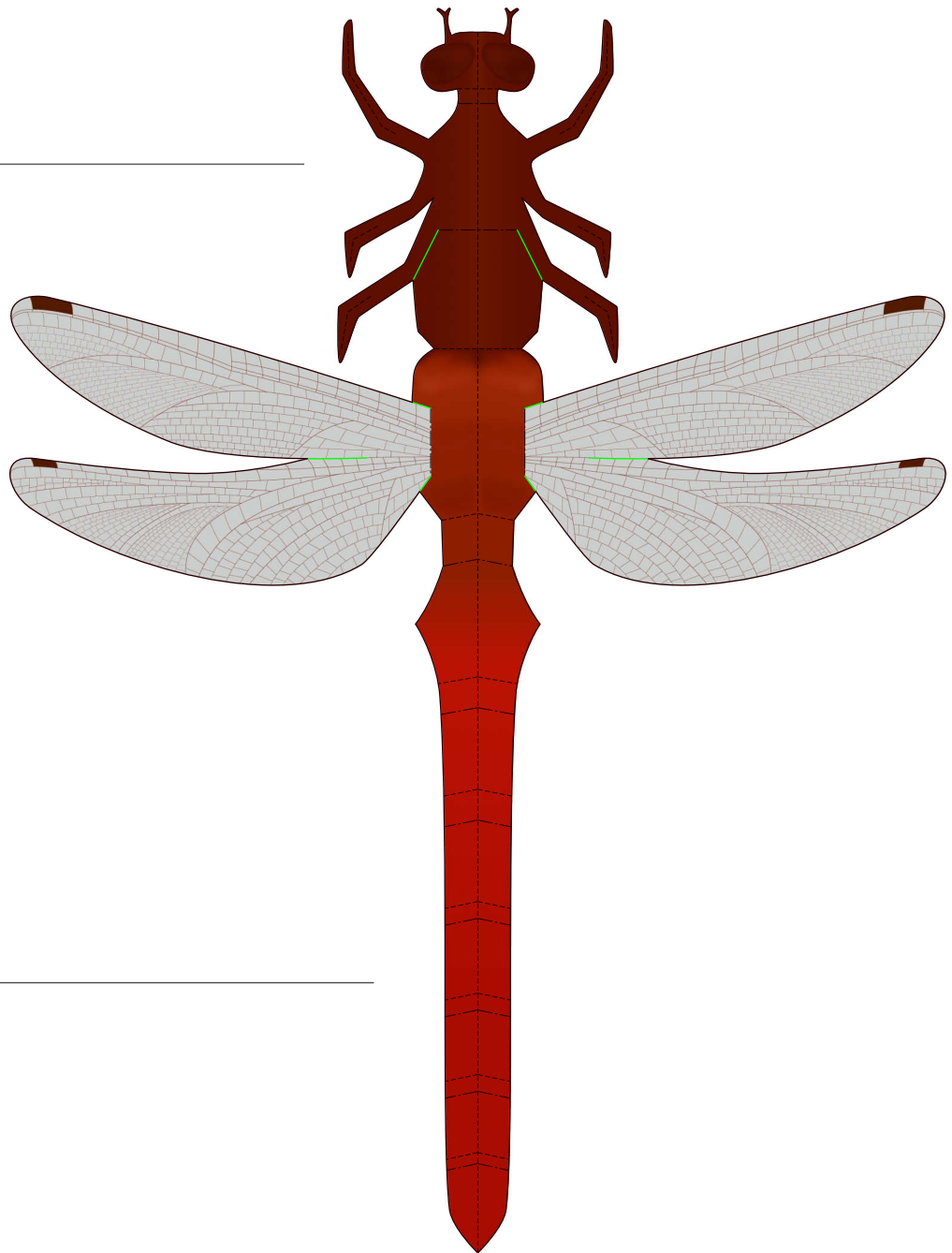
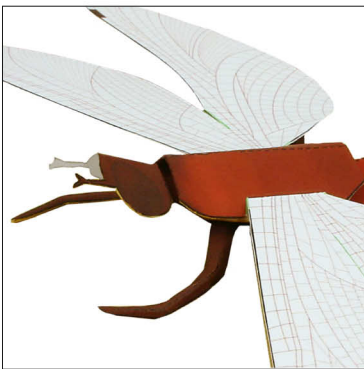


## Red Dragonfly (Libellulidae)

Distribution: Japan, Far Eastern Asia, Europe

Body size: Approx. 40 mm

While in its larval stage, the red dragonfly is known as a "dragonfly larva." During this time, it lives in water and feeds on small organisms living in the water. After it develops to the adult stage, it is able to fly and it catches insects for food. When laying eggs, it does so near water.



### [Instructions]

Using the picture of the completed insect as a guide, fold along the mountain lines and valley lines to make your own insect.

----- Mountain fold

- - - - - Valley fold

— Scissors line

— Cut in line



**[Caution]** Remember to be very careful when using scissors.

