

PAPER CRAFT

<http://www.canon.com/c-park/en/>

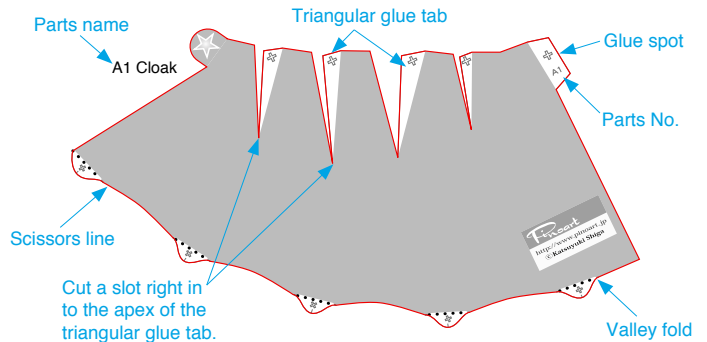


A Assemble the cloak and vest

Use patterns: Page2/Page3.

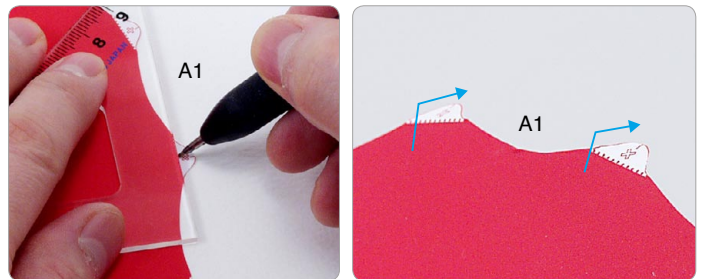
① Cut out A1 by cutting along the lines.

★ Cut along the line marked .



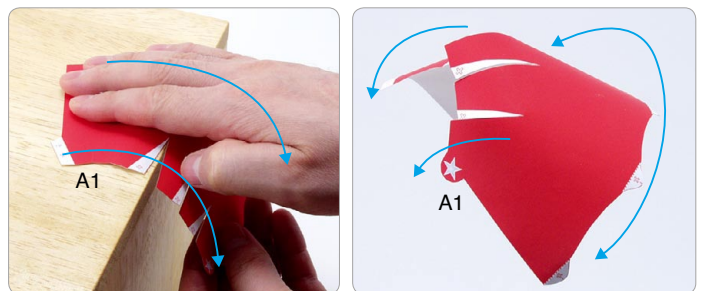
② Make a fold line.

★ Trace along the fold line with a pencil, scoring it to make it easier to fold.



③ The parts will be easier to assemble if curled.

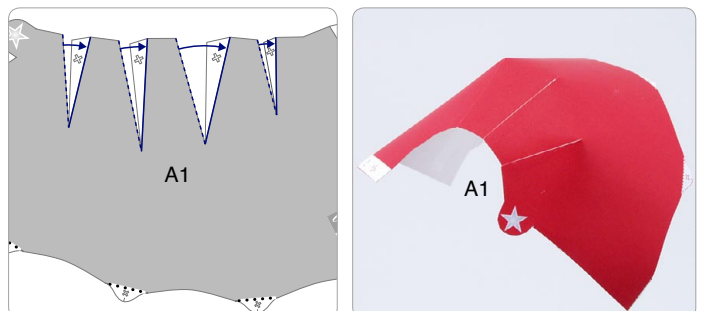
★ Using the photo as a guide, apply pressure with the palm of your hand, gradually curling the paper in the direction of the arrow.



④ Add a slight curl to A1 when attaching it.

★ Attach the triangular glue tabs so that the front side becomes convex.

★ Using the picture as a guide, attach in the direction of the arrow.



Tools

Scissors
Paste, or woodwork glue
Stencil pen, or bodkin
Ruler

Notation Key

Scissors line
 Mountain fold
 Valley fold
 Glue spot
 Glue reverse side
A1,B1 Parts No.

◆The Assembly instructions are divided into four blocks: A (cloak and vest), B (hat), C (gloves), and D (boots). Follow the instructions for each block to assemble your teddy bear.

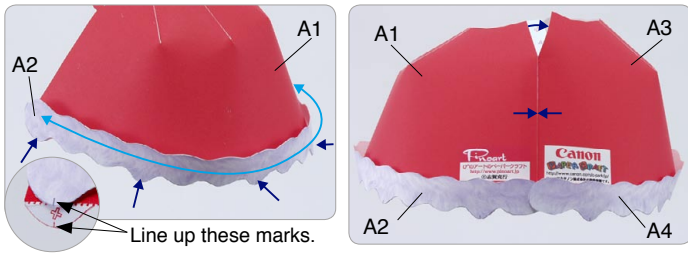
◆★ marks a basic assembly technique that remains the same regardless of the part. Instructions are printed only for the first instance.

◆All photographs are modeled on the Floral teddy bear. The Christmas outfit will fit any teddy bear Papercraft.

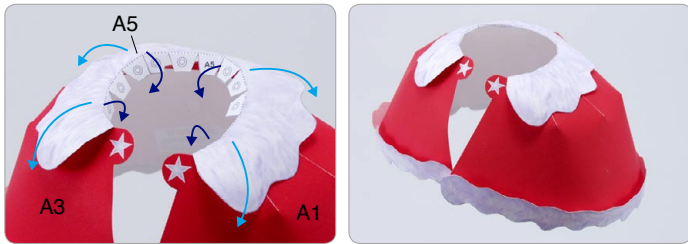
<Caution>

- ✂Keep scissors and glue away from small children.
- ✂Be careful not to cut your fingers when using scissors.

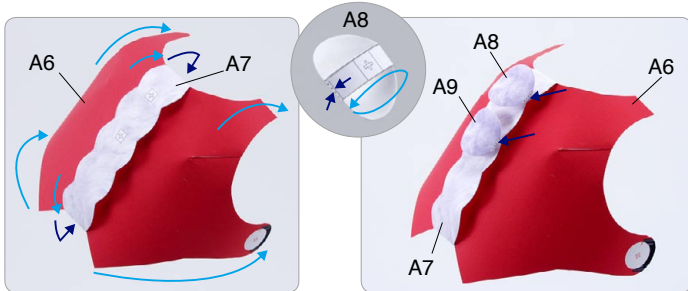
⑤ Curl A2 and stick it onto A1. Now, assemble A3 and A4 in the same way and then assemble A1 and A3 together.



⑥ Curl A5 and then attach the assembly to A1 and A3.



⑦ Assemble A6 and A7. Then, assemble A8 and A9 and glue to A7.



⑧ Glue A10 to A6 and assemble A6 and A11 together. Then, glue A13 to A12.

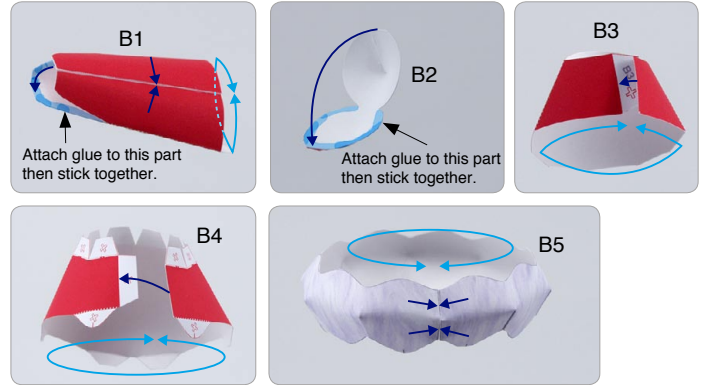


※Attention: See section E for instructions on how to put the outfit on the teddy bear.

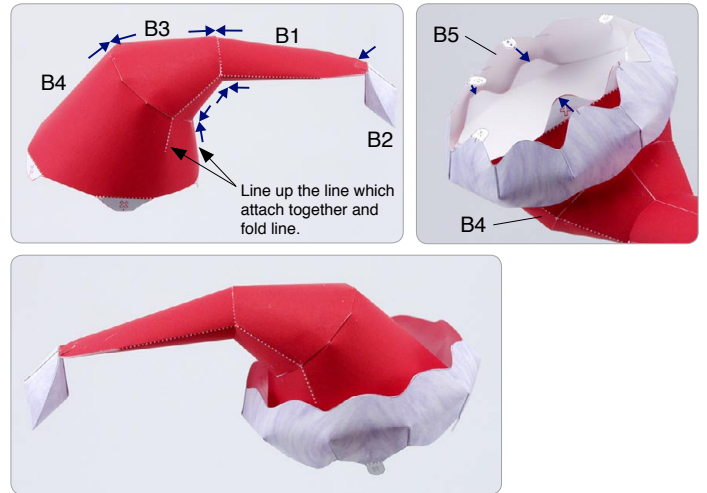
B Assemble the hat

Use pattern: Page4.

① Assemble parts B1 through B5.



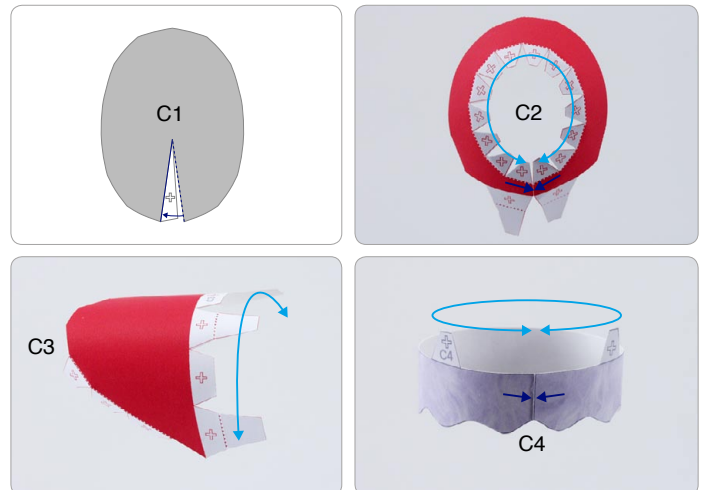
② Attach B1 through B5 together.



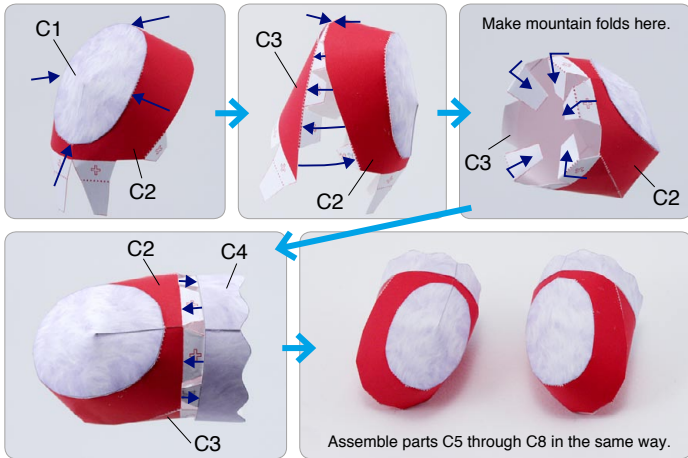
C Assemble the glove

Use pattern: Page5.

① Assemble parts C1 through C4.



② Attach C1 through C4 together.



※Explanation using Floral teddy bear.

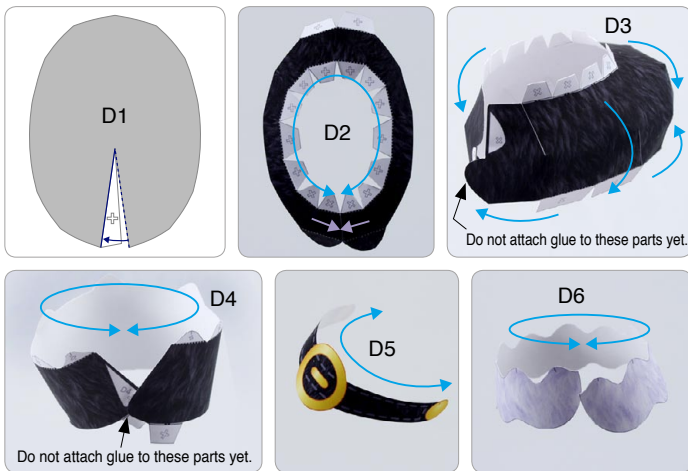
E Putting on the outfit
Dress up teddy in her cape, jacket, brooch, hat, gloves and boots.

① Put on the jacket and cape, and then add the brooch.



D Assemble the boots
Use pattern: Page6/Page7.

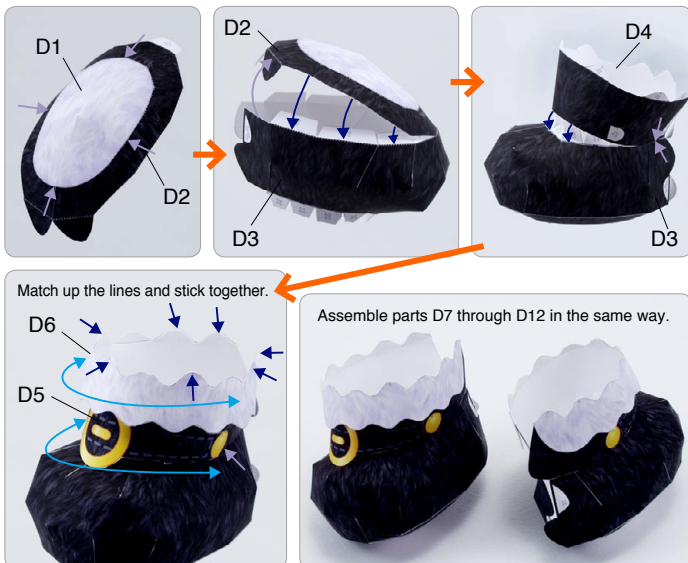
① Assemble parts D1 through D6.



② Put on teddy's hat and gloves.



② Attach D1 through D6 together.



③ Put her boots on and she's ready to go!

