

PAPER CRAFT

<http://www.canon.com/c-park/en/>



This Christmas accessory is based on Santa Claus' outfit. The hat, jacket and boots, etc., will fit any teddy bear. Dress up your favorite teddy bear in this cute outfit and take her with you to the Christmas party!



Tools
Scissors
Paste, or woodwork glue
Stencil pen, or bodkin
Ruler

Notation Key	
—	Scissors line
.....	Mountain fold
- - - - -	Valley fold
+	Glue spot
⊙	Glue reverse side
A1, B1	Parts No.

- ◆ The Pattern are divided into four blocks: A (cloak and vest), B (hat), C (gloves), and D (boots). Follow the instructions for each block to assemble your teddy bear.
- ◆ All photographs are modeled on the Floral teddy bear. The Christmas outfit will fit any teddy bear Papercraft.

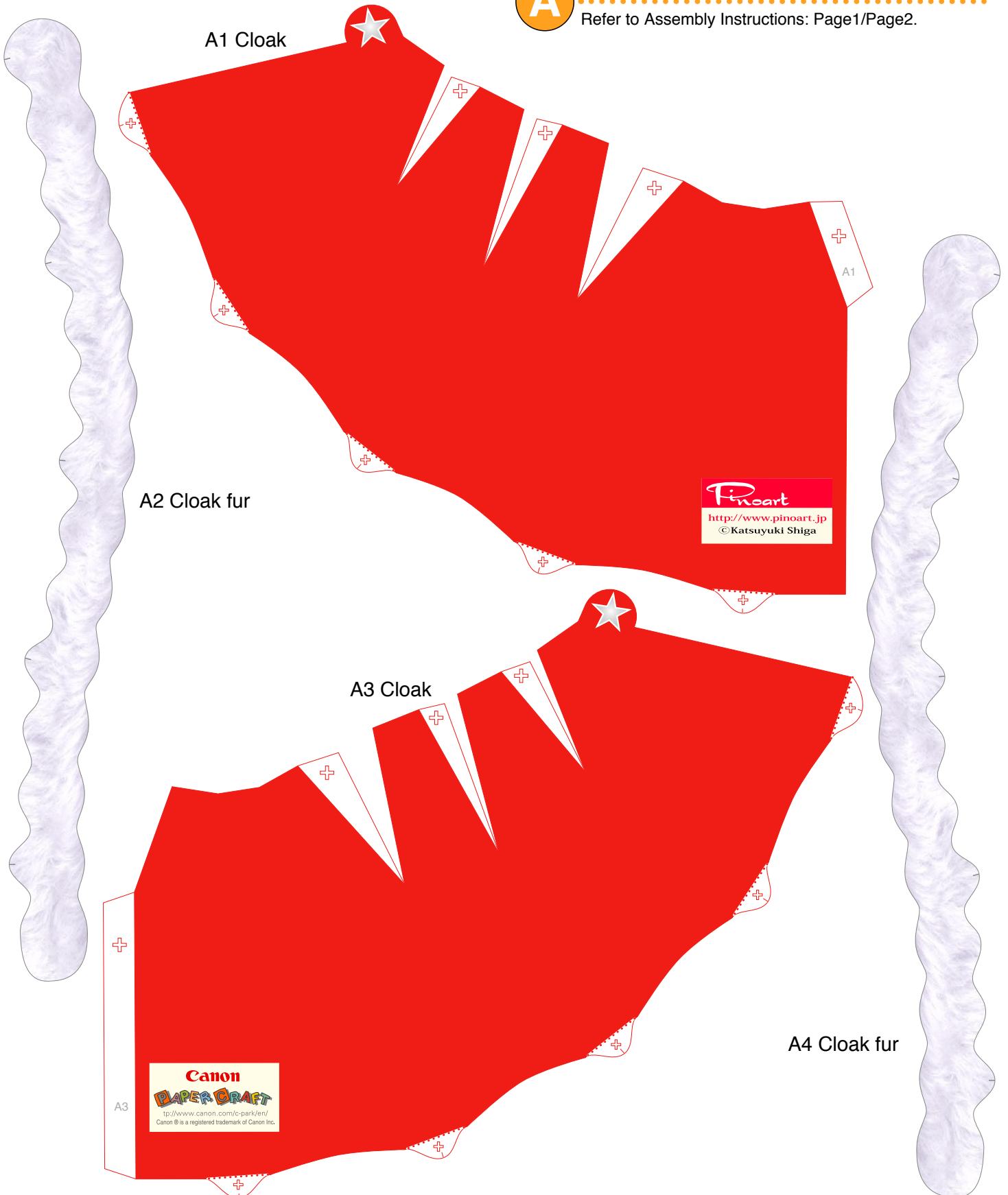
<Caution>

- ※ Keep scissors and glue away from small children.
- ※ Be careful not to cut your fingers when using scissors.



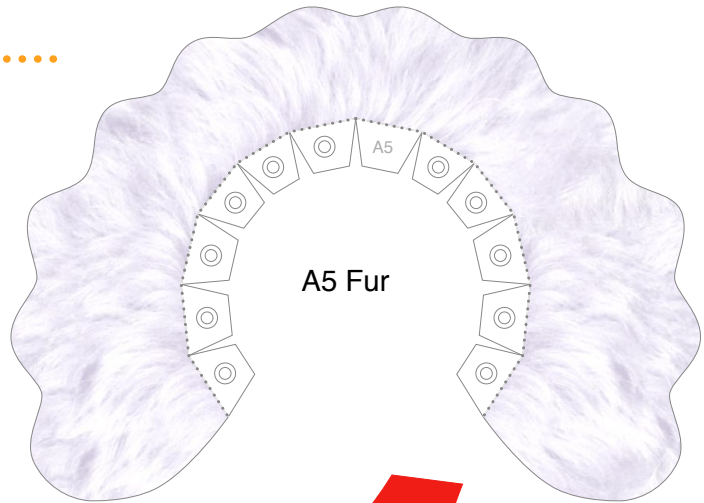
Cloak and vest parts

Refer to Assembly Instructions: Page1/Page2.



A Cloak and vest parts

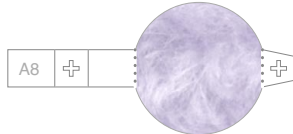
Refer to Assembly Instructions: Page2.



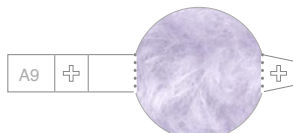
A7 Vest fur



A8 Fur ball

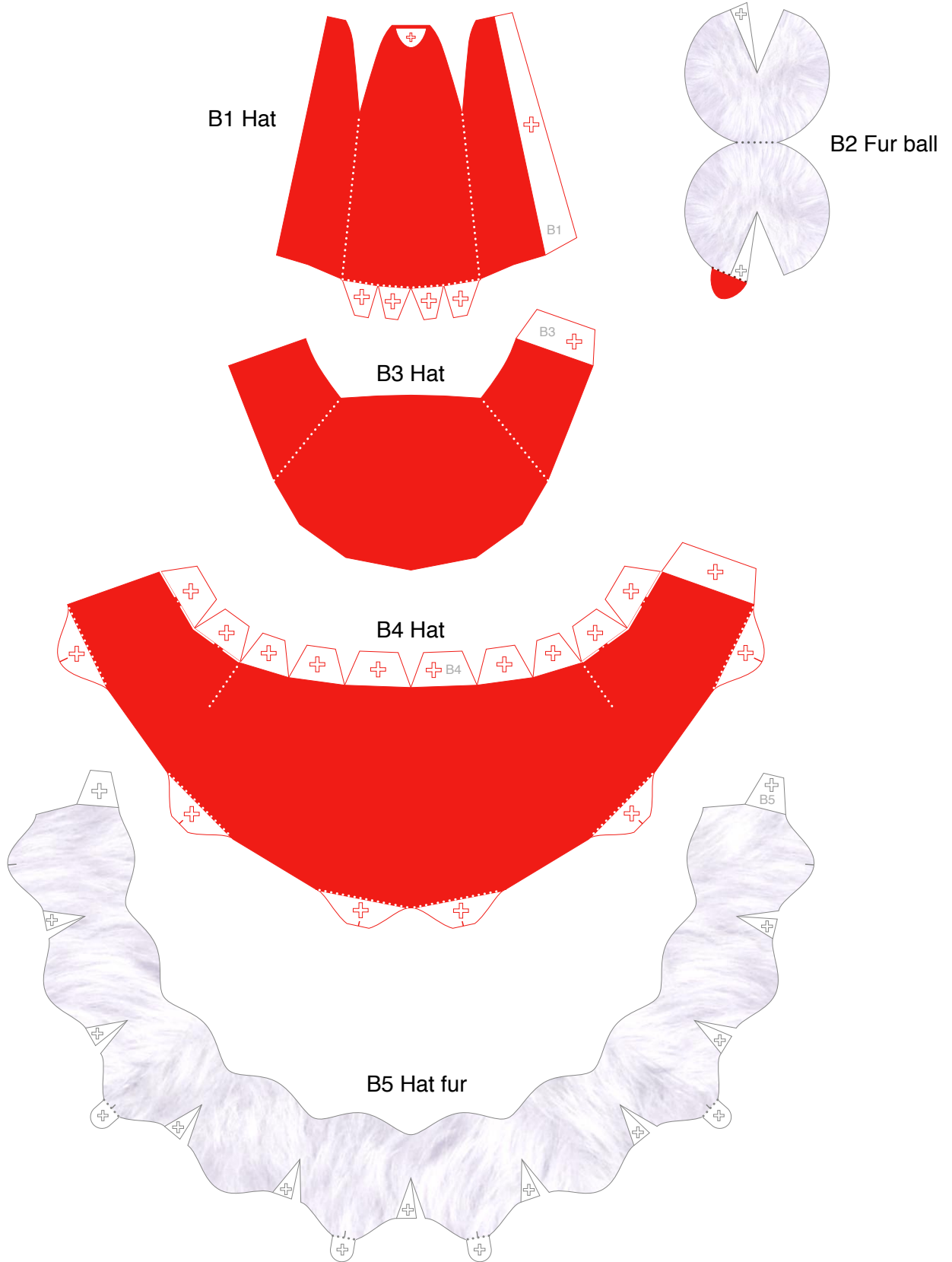


A9 Fur ball



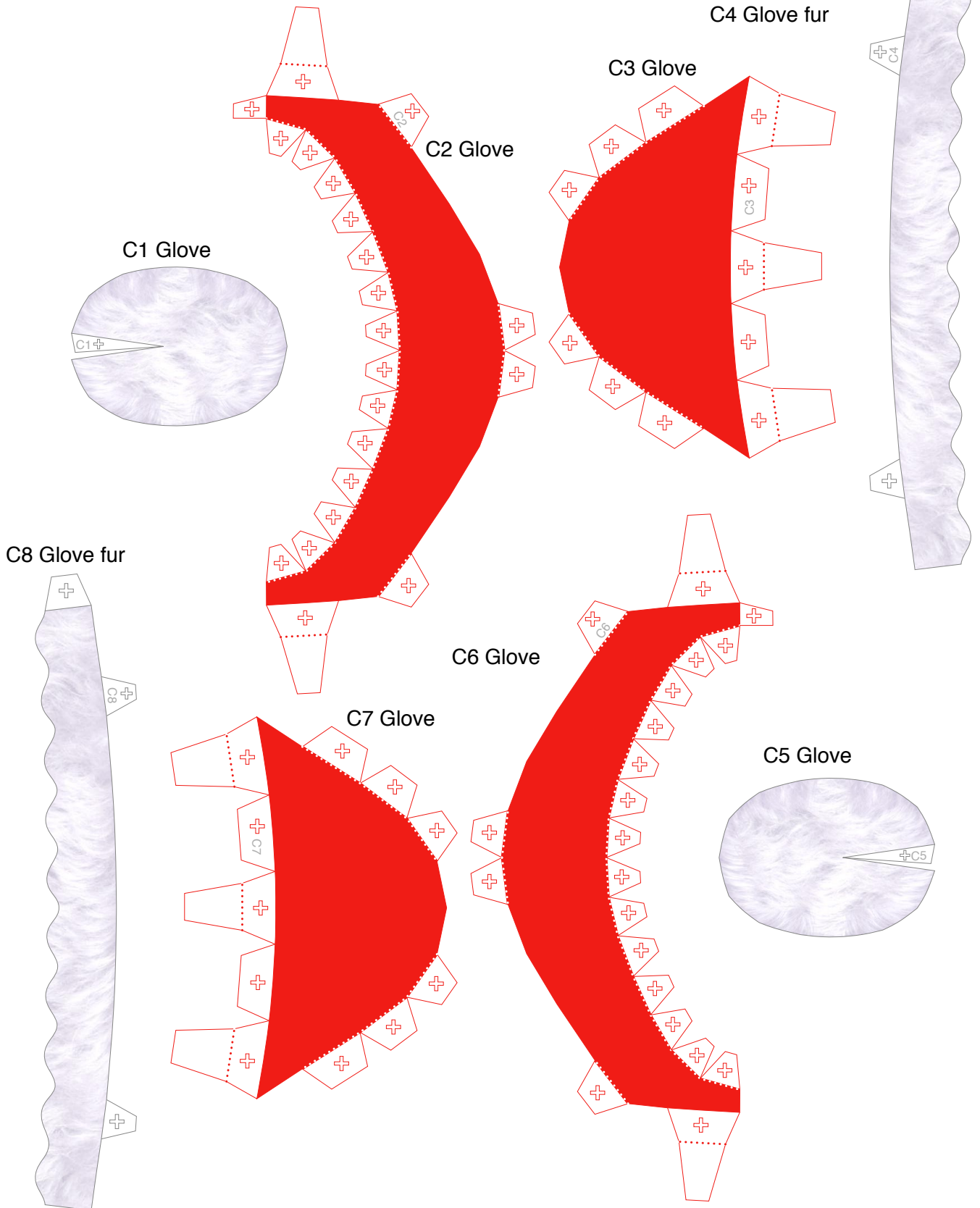
B Hat Parts

Refer to Assembly Instructions: Page2.



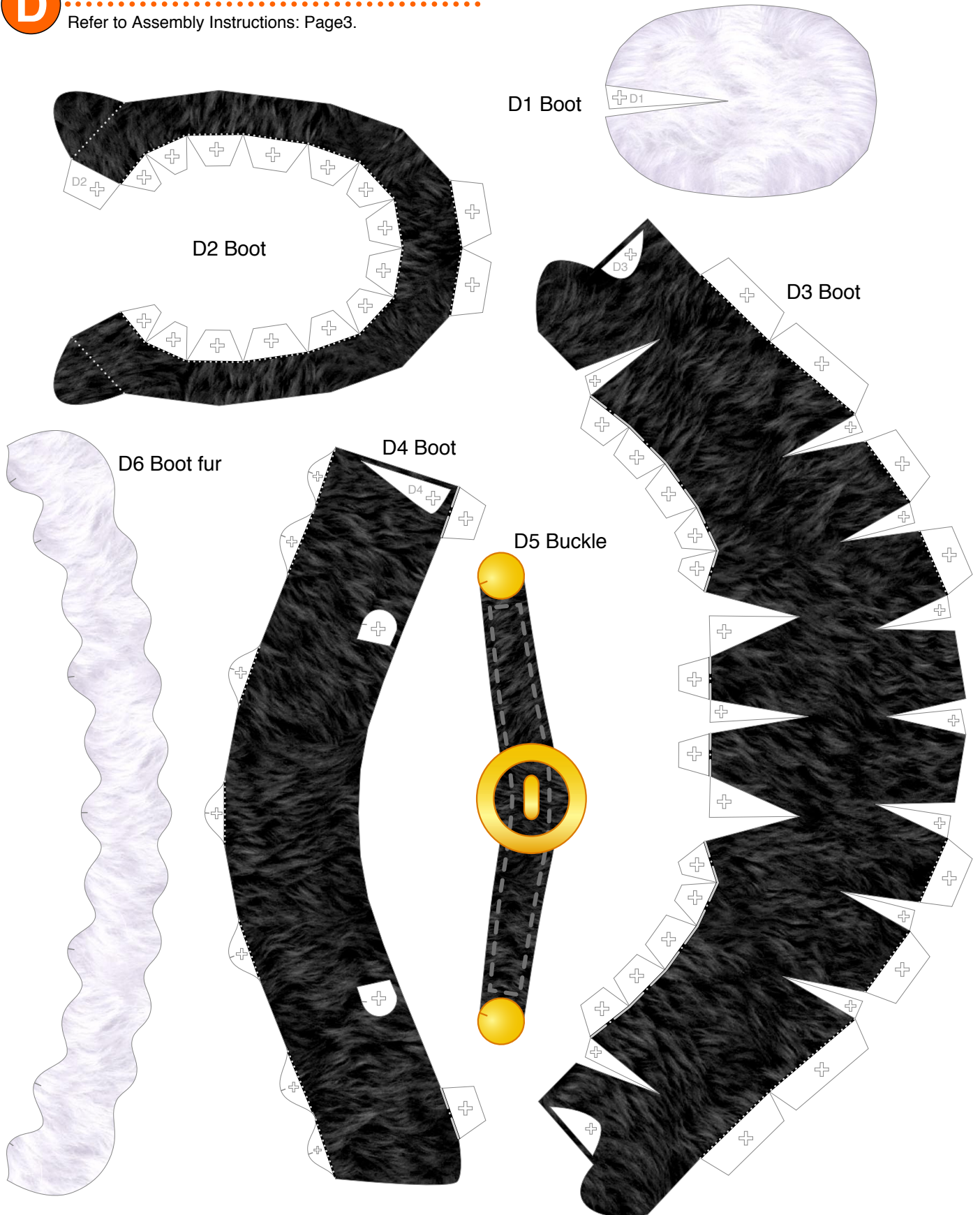
C Gloves Parts

Refer to Assembly Instructions: Page2/Page3.



D Boots parts

Refer to Assembly Instructions: Page3.



D Boots parts

Refer to Assembly Instructions: Page3.

