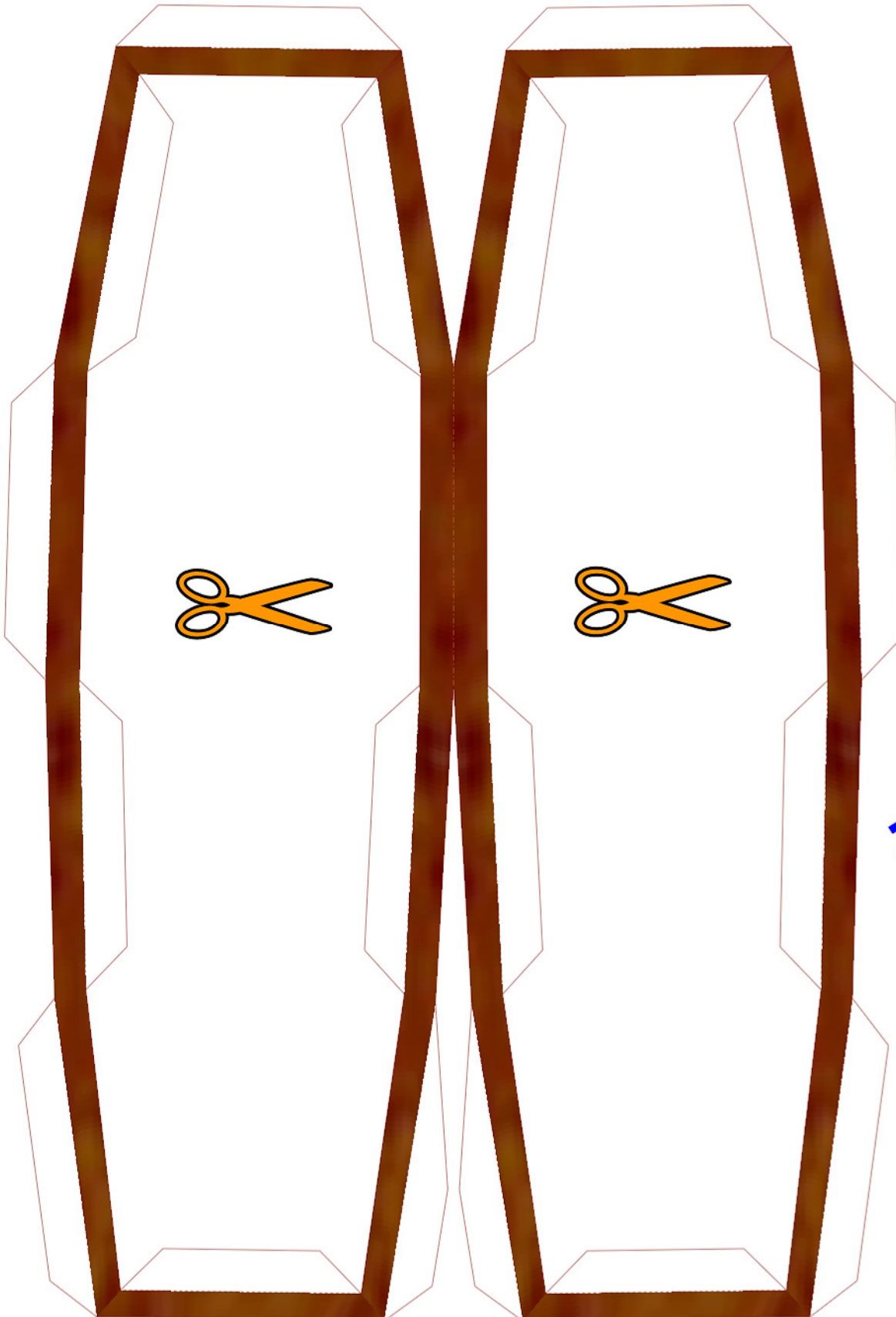


TOMB RAIDER

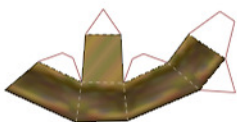


TOMB RAIDER IV EGYPTIAN ADVENTURE MUMMY

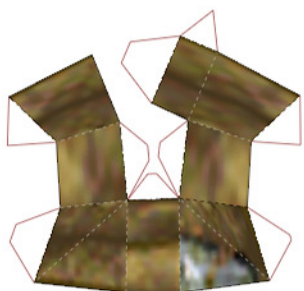
When in Alexandria, don't forget to visit the cheesy Egyptian Adventure tourist attraction found near the Coastal Ruins! You can see a model of the Great Pyramid of Giza, experience a "real" mummy attack, and of course, get yourself killed by one of the attractions! (no wonder the establishment has been closed off...)



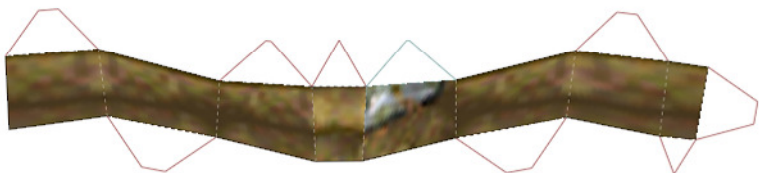
37



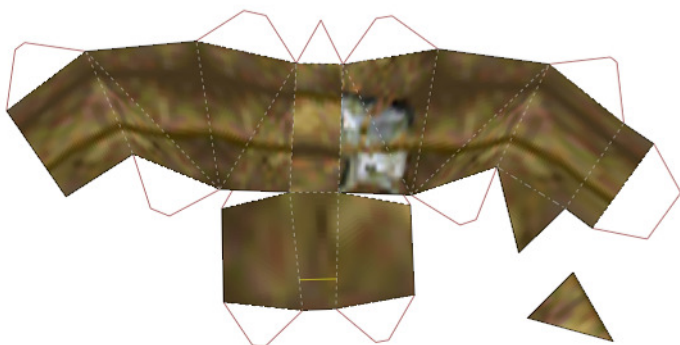
22



21



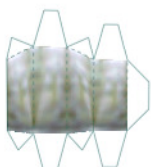
35



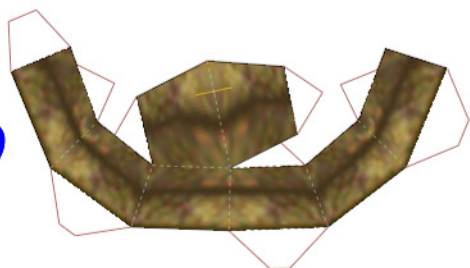
36



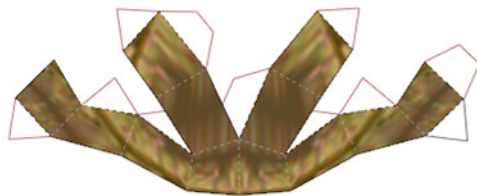
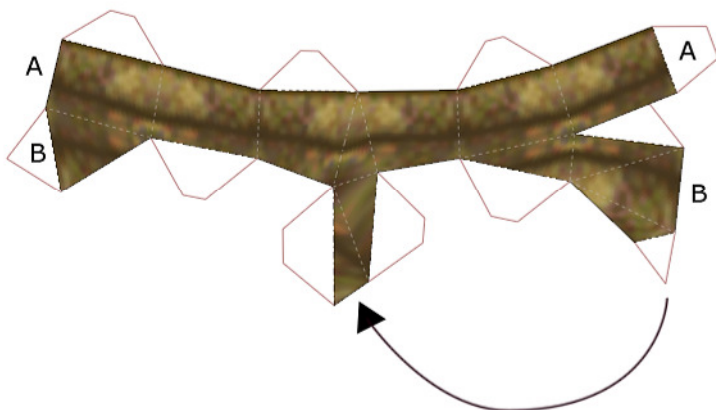
20



19



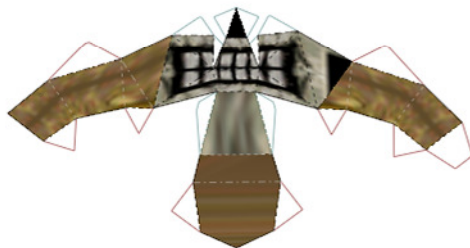
8



40



39



38



dot-dash lines:
fold up (valley fold)

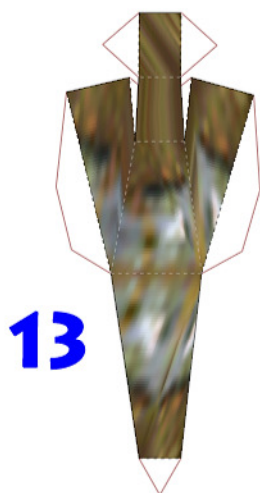
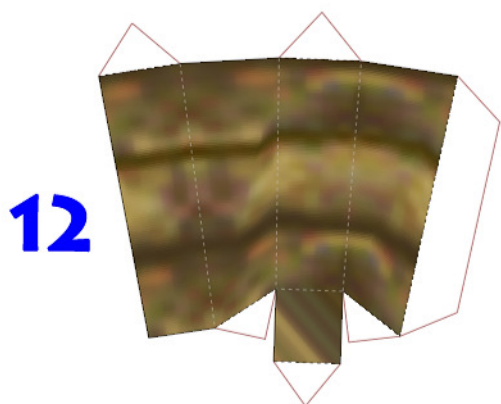
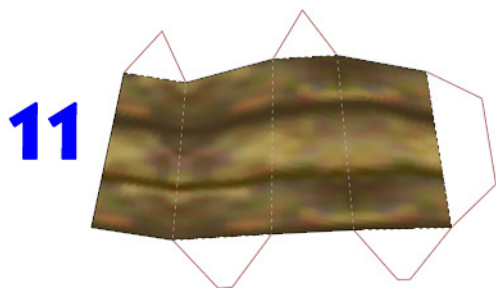
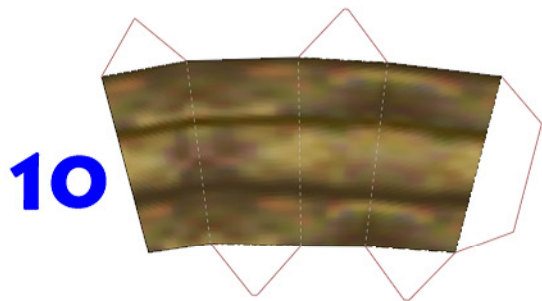
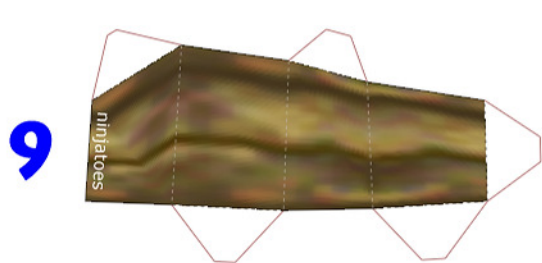


dashed lines:
fold down (mountain fold)

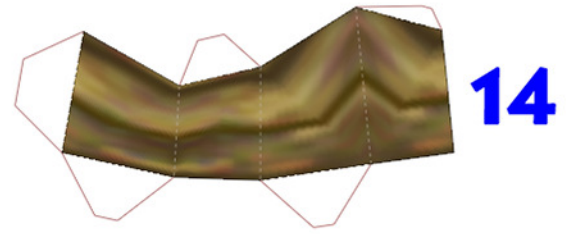
happy halloween
2013!



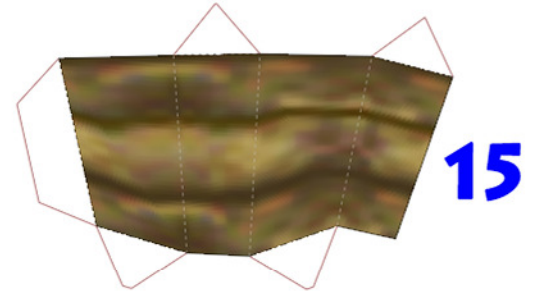
P.2



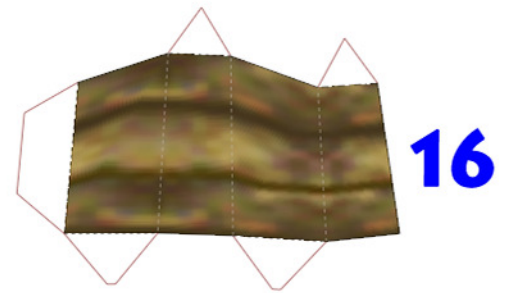
3



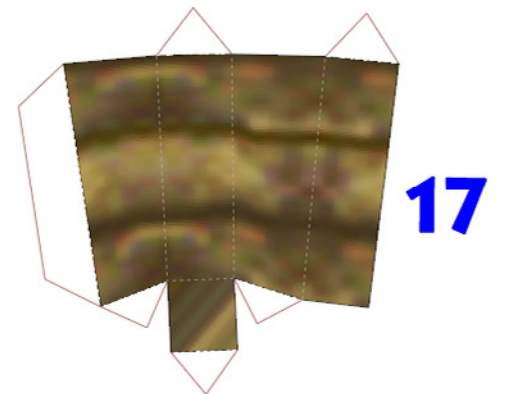
14



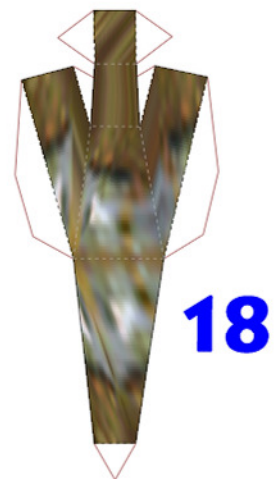
15



16

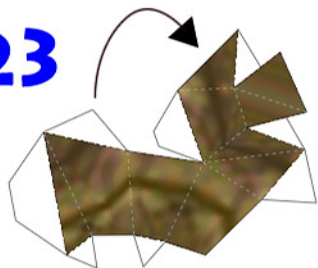


17



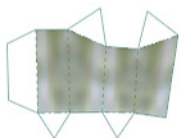
18

23



4

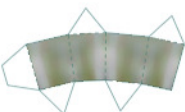
24



25



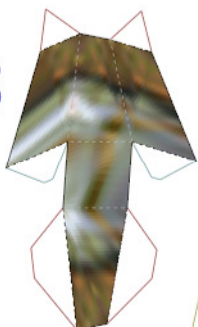
26



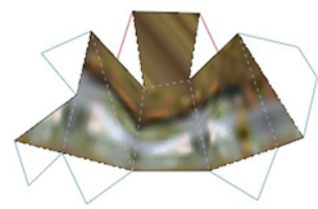
27



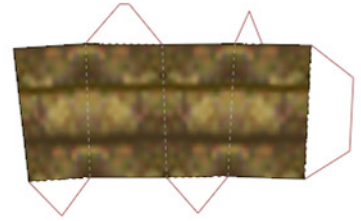
28



5



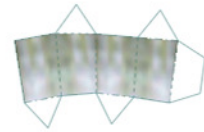
29



30



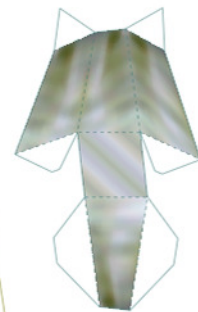
31



32



33



34



6



7

