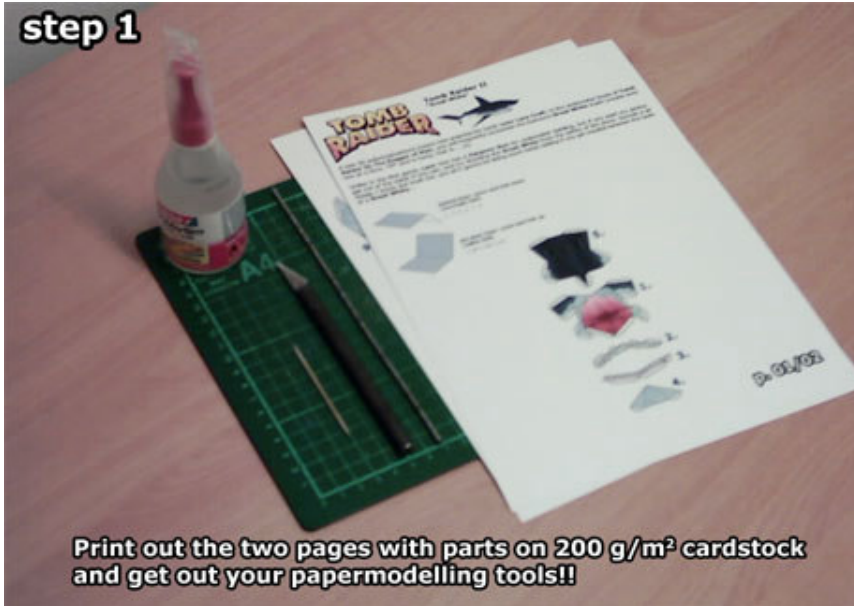


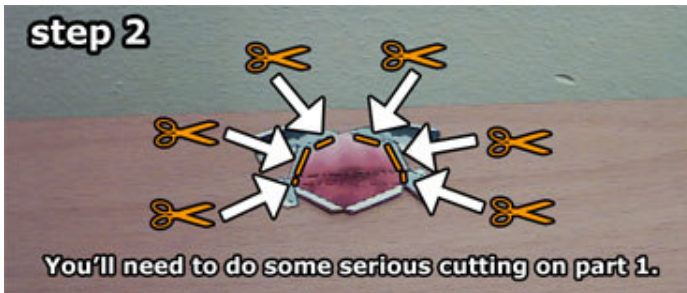
Great White shark instructions

step 1



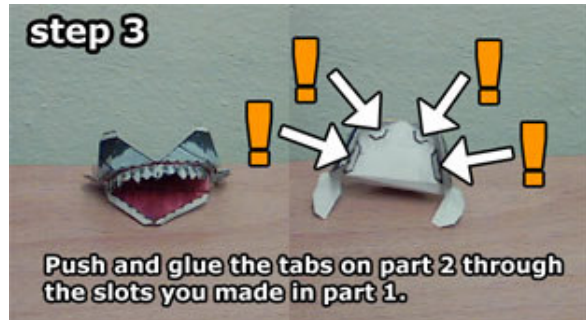
Print out the two pages with parts on 200 g/m² cardstock and get out your papermodelling tools!!

step 2



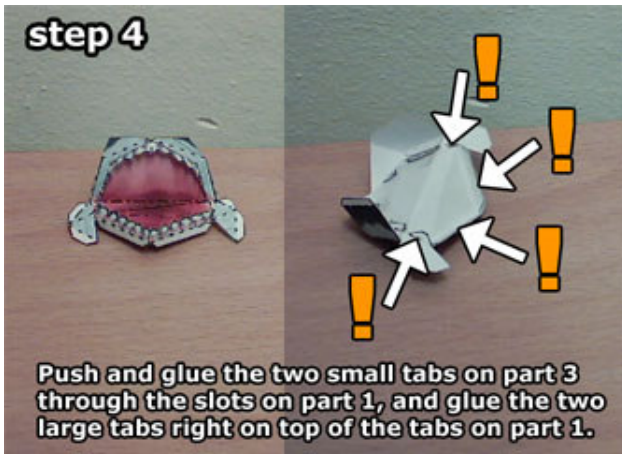
You'll need to do some serious cutting on part 1.

step 3



Push and glue the tabs on part 2 through the slots you made in part 1.

step 4



Push and glue the two small tabs on part 3 through the slots on part 1, and glue the two large tabs right on top of the tabs on part 1.

step 5



Now glue on part 4.

step 6



Attach part 5 to complete the "business end" of the shark.

step 7



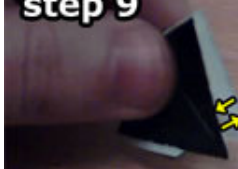
Glue part 6 to parts 4 and 5.

step 8



There's need for some cutting on part 7 again.

step 9



Glue the back of part 8 back-to-back.

step 10



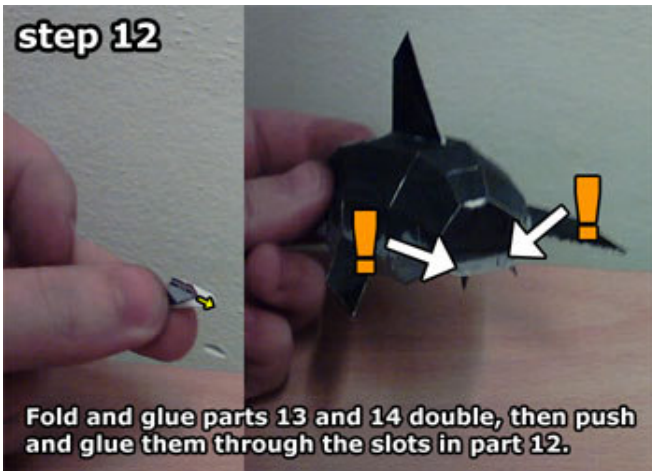
Assemble parts 8-10 and glue them through the slots in part 7.

step 11



Cut out the two slits on part 12.

step 12



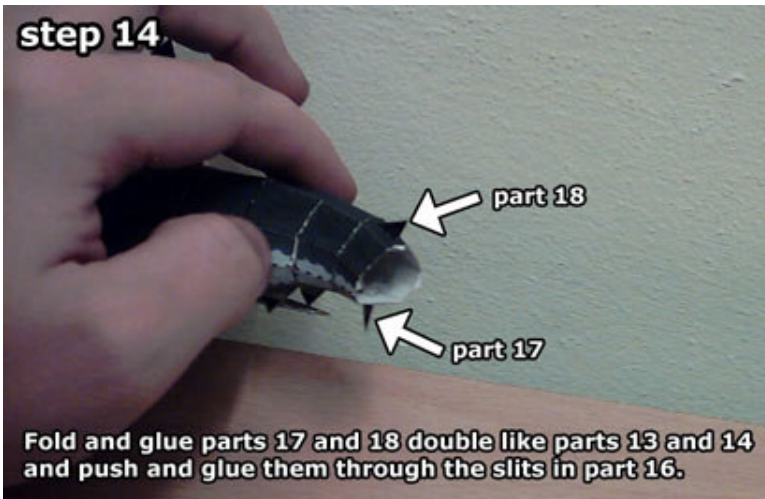
Fold and glue parts 13 and 14 double, then push and glue them through the slots in part 12.

step 13



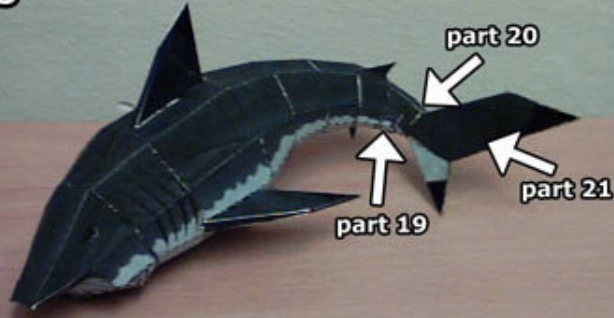
Part 16 is another part that needs cutting.

step 14



Fold and glue parts 17 and 18 double like parts 13 and 14 and push and glue them through the slits in part 16.

step 15



Finally, assemble and glue the last sections (parts 19-21) to the rest of the body.

Thank you for downloading and building Ninjatoes' Tomb Raider II's "Great White"!!

<http://members.home.nl/saarloos/>