

Completed image



Example arrangement



You will need

- Scissors, glue, ruler, dried-up ballpoint pen

Assembly tips

- Begin by placing the ruler against the fold lines and drawing the empty ballpoint pen over them so that it is easy to make clean folds.

Lines and icons

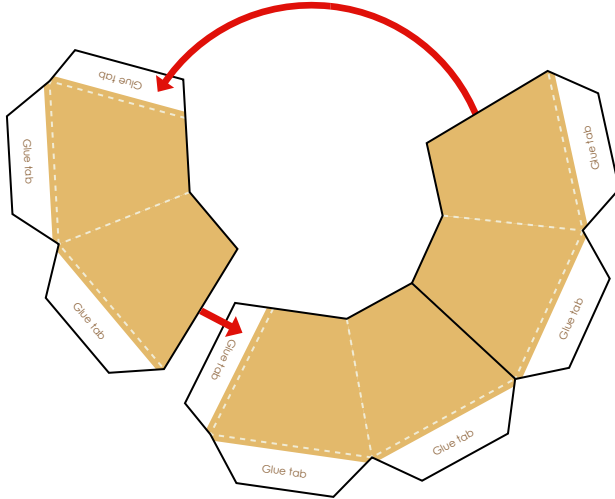
- Scissors line —————
- Mountain fold - - - - -
- Valley fold - - - - -

Caution

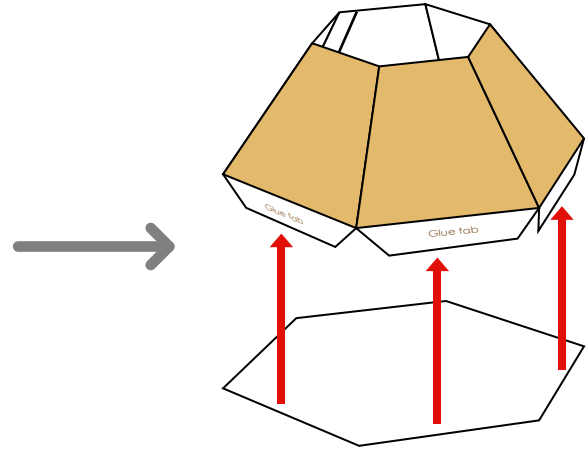
- *Glue, scissors and other tools and materials may be harmful to children.
Please keep your work out of the reach of children.

1 Assemble the bottom of the vase

Cut out the pieces along the scissors lines, fold and make creases, and glue the three pieces together.

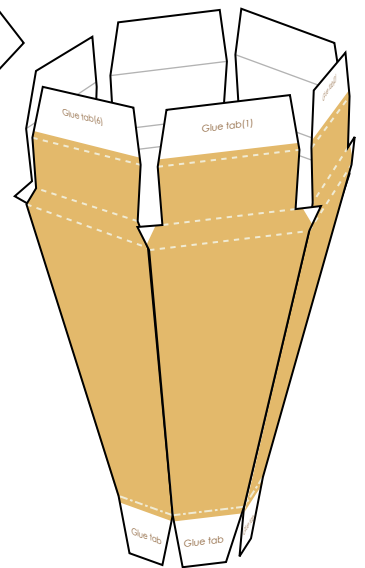
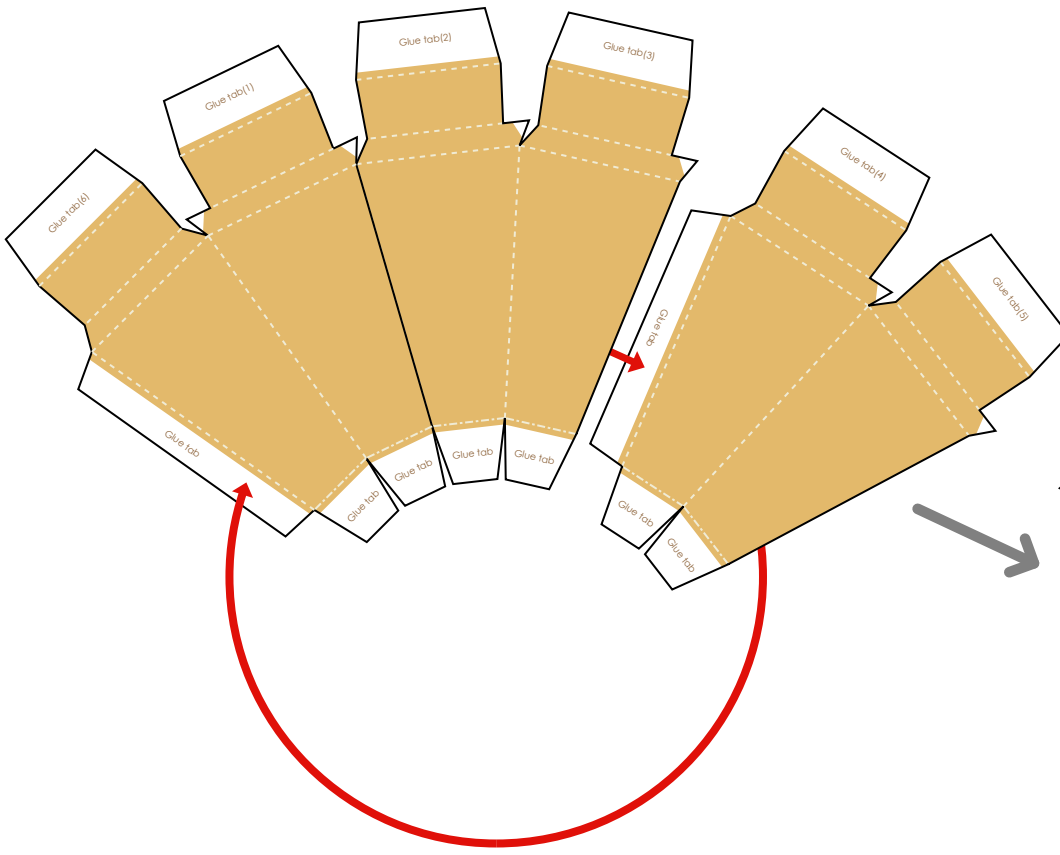


Glue the base to the glue tabs.



2 Assemble the top of the vase

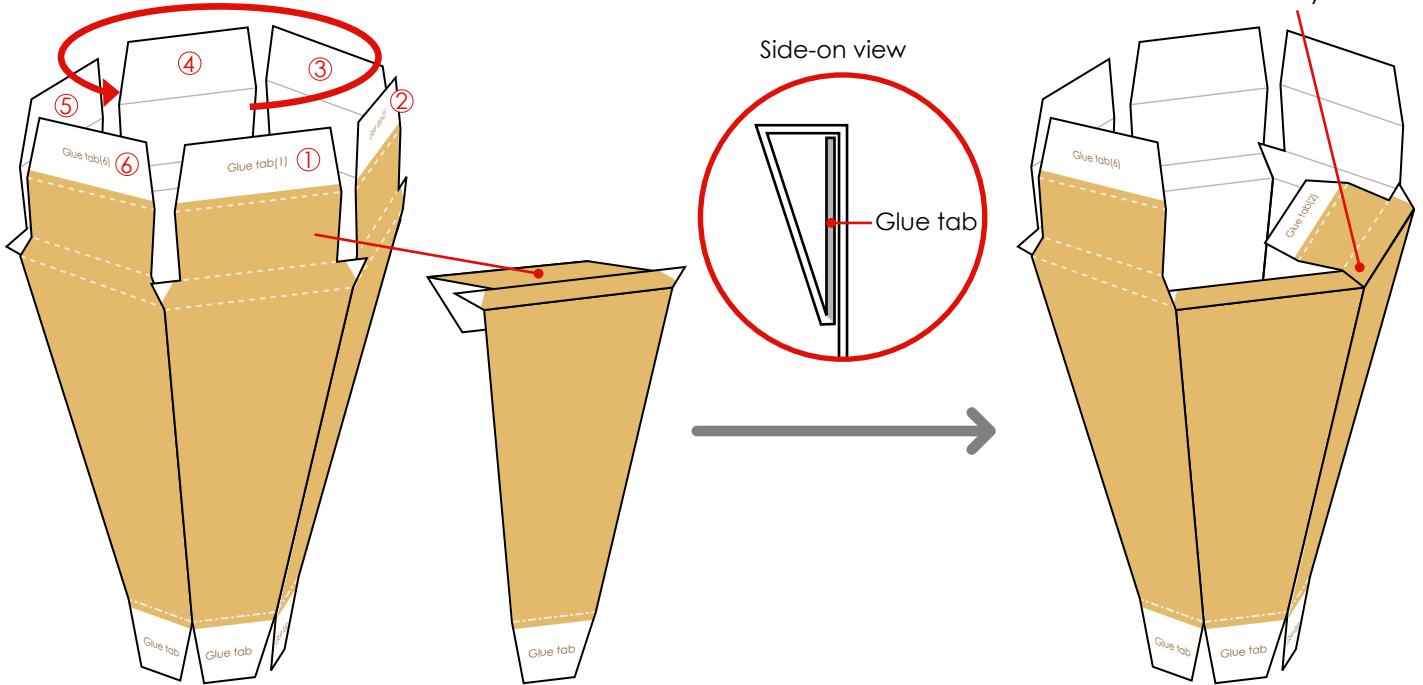
Cut out the pieces along the scissors lines, fold and make creases, and glue the three pieces together.



3 Complete the top, and attach it to the bottom

Fold and glue down the glue tabs on the top of the completed vase top, in order beginning with glue tab (1).

For glue tabs (2) to (5), tuck the white triangle on the tab on their left underneath them as you fold.



For glue tab (6), tuck the white triangles on the tabs on both sides underneath it as you fold.

Glue the top of the vase to the bottom.

