

Completed image



Example arrangement



You will need

- Scissors, glue, ruler, dried-up ballpoint pen, rounded pencil (or similar object)

Assembly tips

- Begin by placing the ruler against the fold lines and drawing the empty ballpoint pen over them so that it is easy to make clean folds.
- Shaping the stem by rounding it using the rounded pencil or similar object will make it easier to roll.

Lines and icons

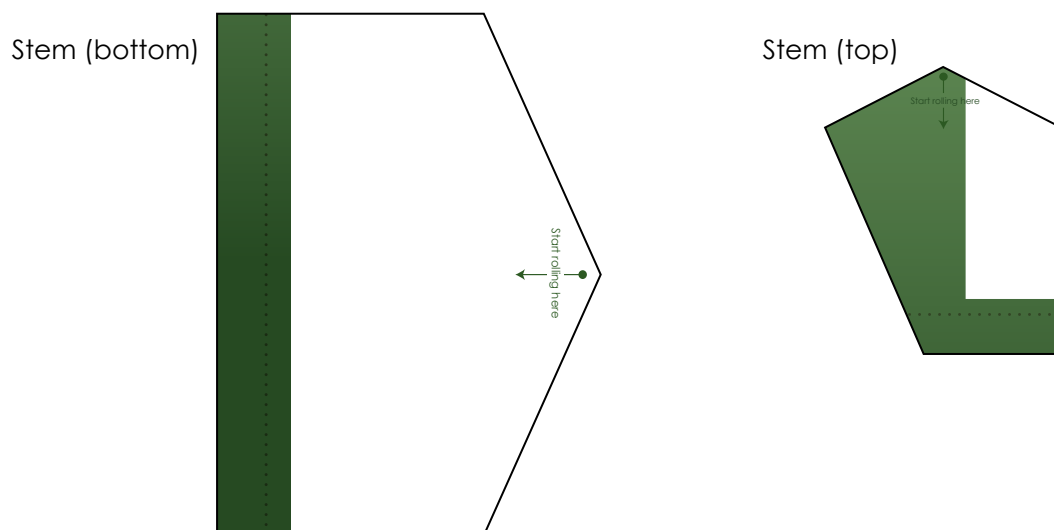
- Scissors line —————
- Mountain fold - - - - -
- Valley fold - - - - -
- Indicator line • • • • •
- Tips ★

Caution

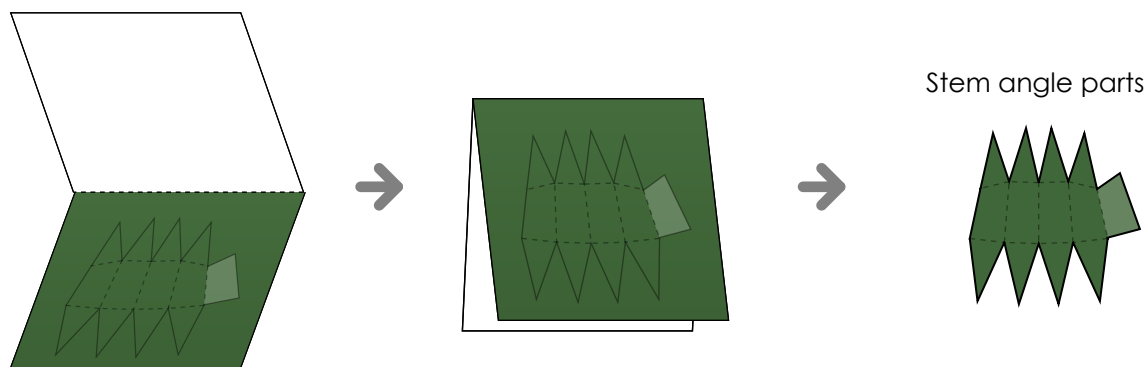
- *Glue, scissors and other tools and materials may be harmful to children.
Please keep your work out of the reach of children.

1 Cut out the parts

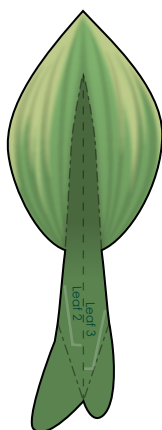
Cut out the parts shown below, along the scissors lines.



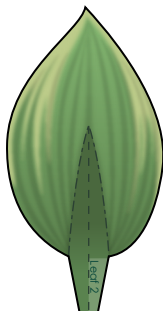
Cut out the parts below, along the lines of the squares around them, fold them in half and glue together. Then, cut out the parts themselves.



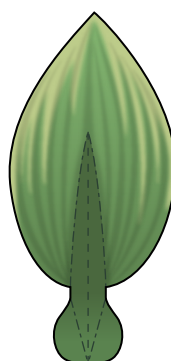
Leaf 1



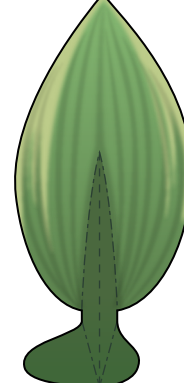
Leaf 2, 3



Leaf 4, 5, 8

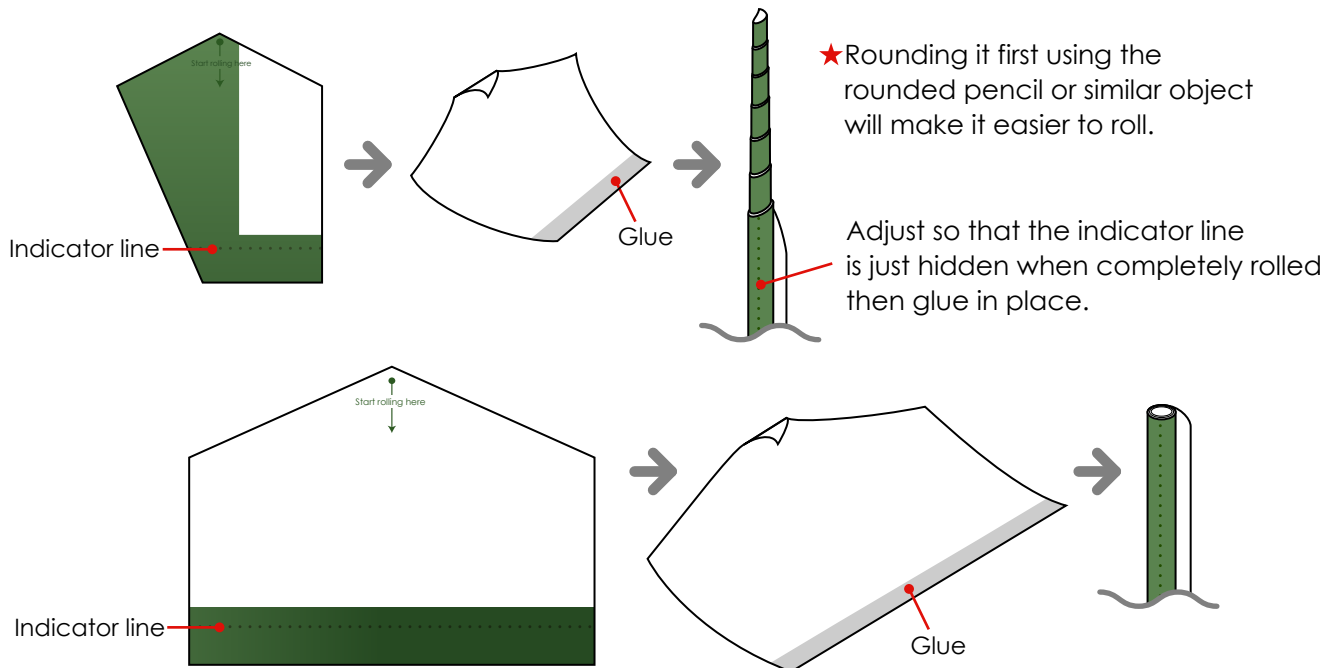


Leaf 6, 7

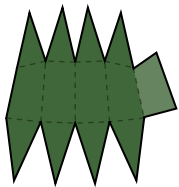


2 Make the stem

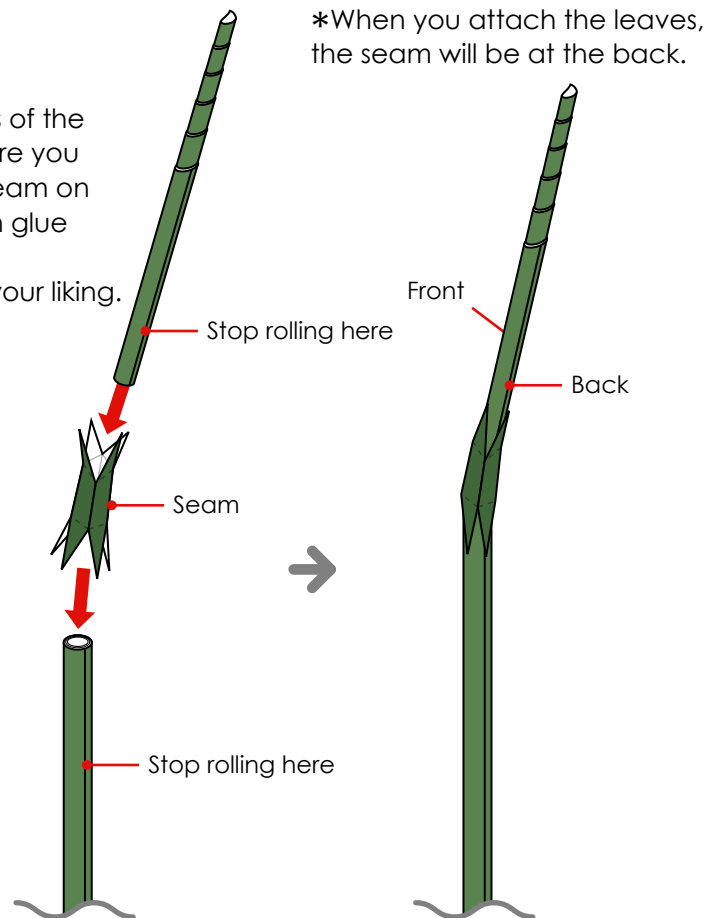
Roll the top and bottom parts of the stem up tightly, beginning from "Start rolling here."



Assemble the stem angle parts.



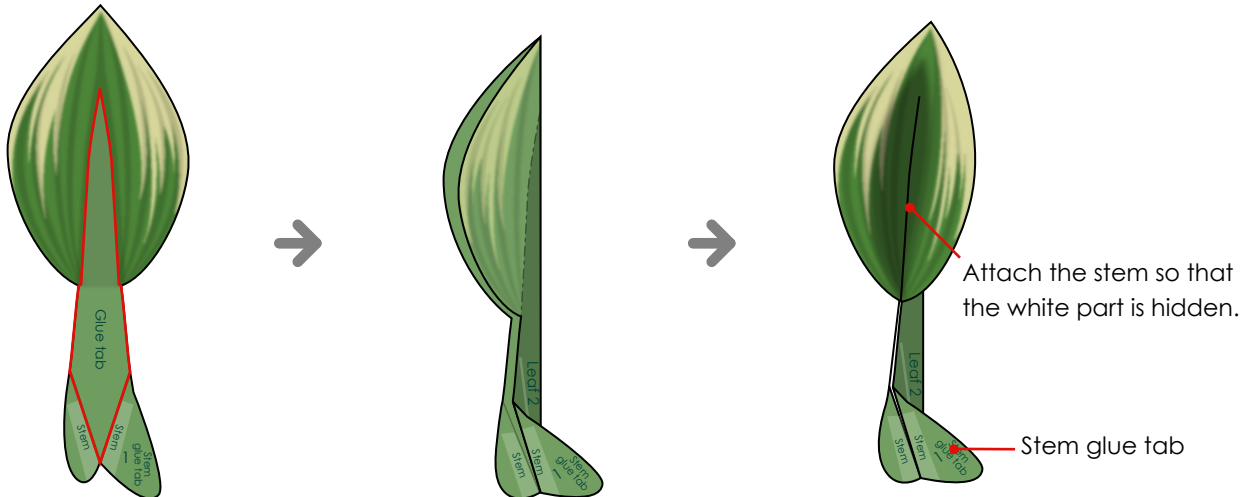
Take the top and bottom parts of the stem and align the edges where you finished rolling them with the seam on the stem angle parts, and then glue them together.
*Attach them at an angle of your liking.



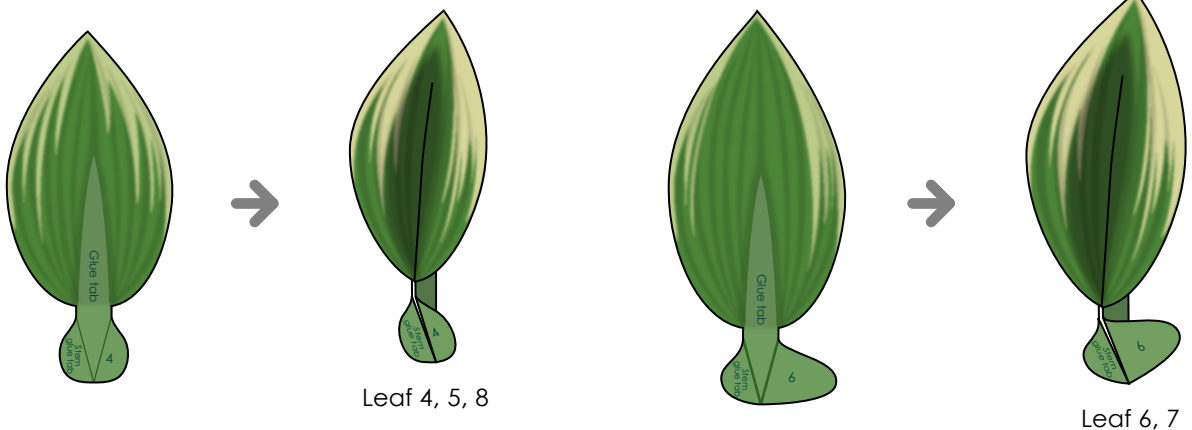
3 Make the leaves

Fold along all the fold lines on leaf 1, and glue together the glue tab outlined in red below.

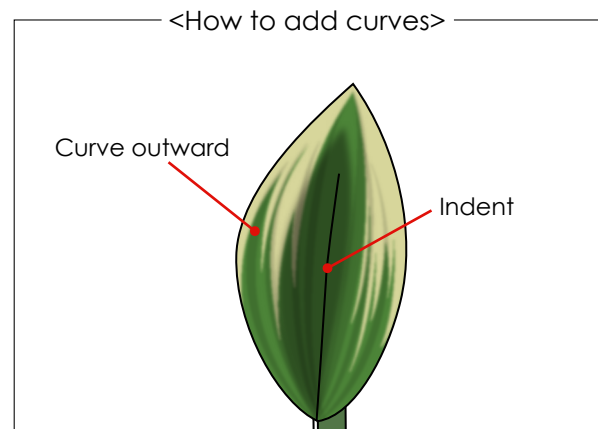
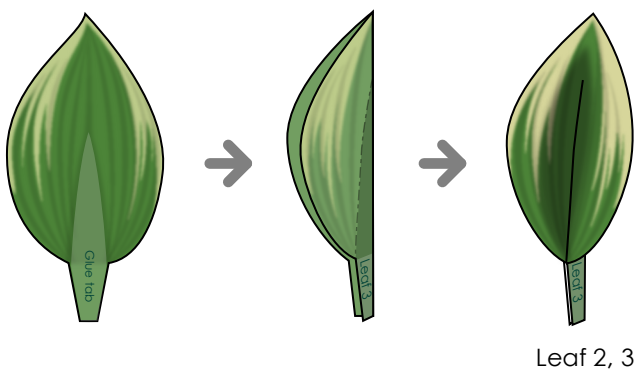
*Fold back the part marked "Stem glue tab" and do not put glue on it yet.



Glue leaves 4 to 8 in the same way.



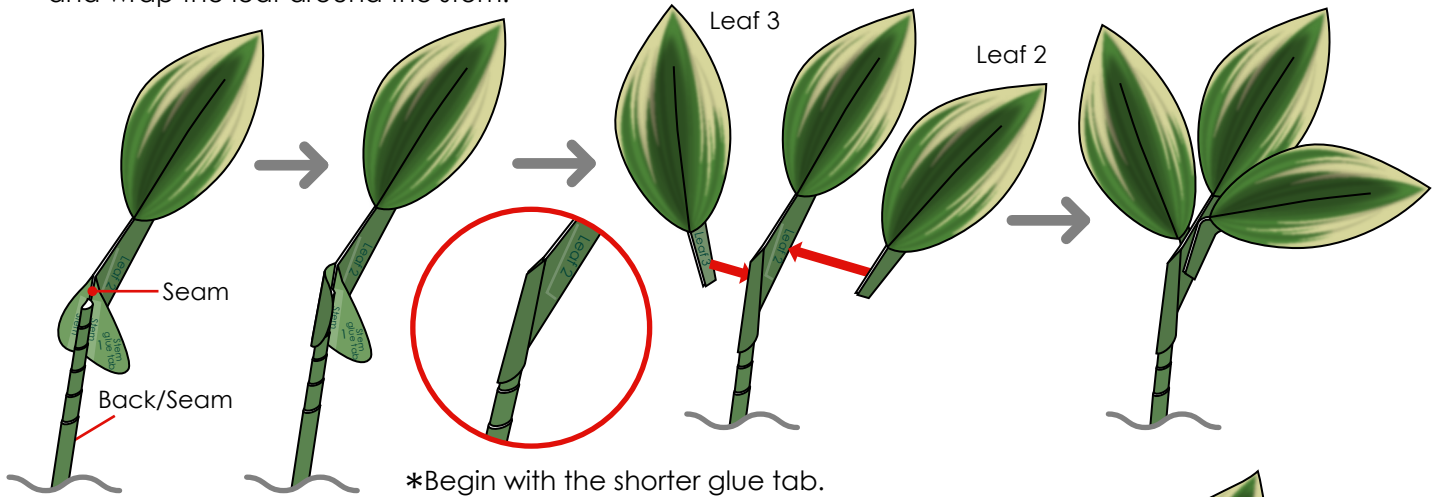
Glue all the glue tabs on leaves 2 and 3 together, following the fold lines.



4 Complete the polygonatum odoratum

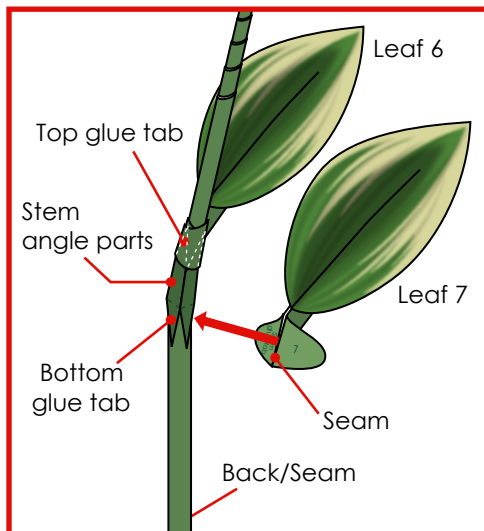
Align the spot marked "Back/Seam" on the top part of the stem with the seam on leaf 1, and wrap the leaf around the stem.

Attach leaves 2 and 3, curve them outwards and pull them into shape.

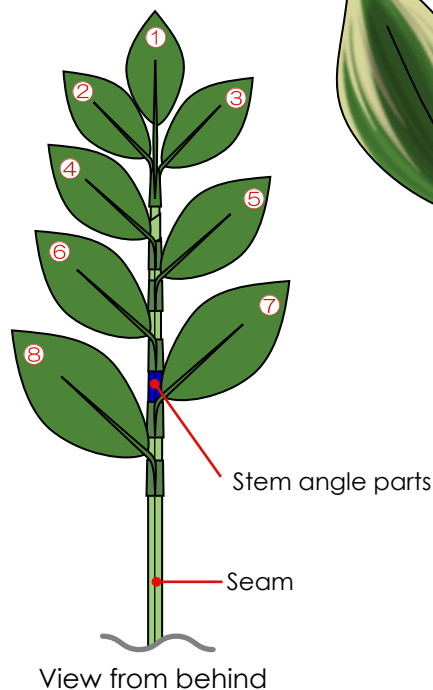


Align the spot marked "Back/Seam" on the stem angle parts with the seams on leaves 6 and 7, and wrap the leaves around the stem.

*Wrap leaf 6 around the top of the stem angle parts, and leaf 7 around the bottom of the stem angle parts, so that the glue tabs are covered.



<How to attach the leaves>



Attach leaves 4 and 5 in the same way, between leaves 3 and 6.

★ Attach leaf 8 wherever you like.

