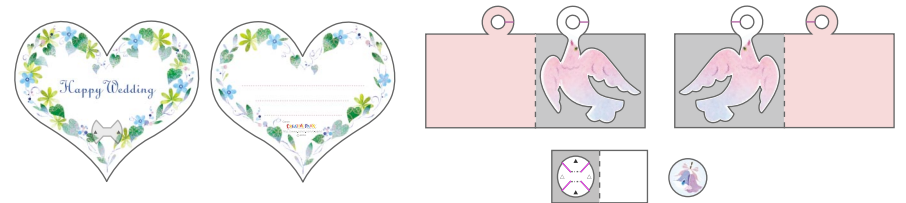


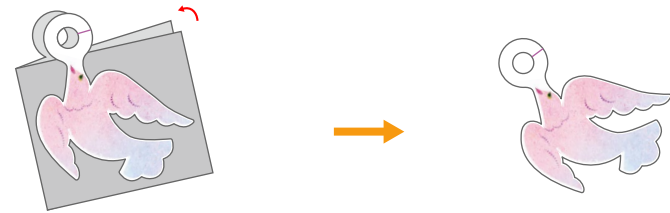


1 Cut out the parts and fold them along the fold lines on each.



*When cutting out the hole for the pivot, it will be easier if you cut along the slot right through the circle, then cut the two halves of the circle out separately.

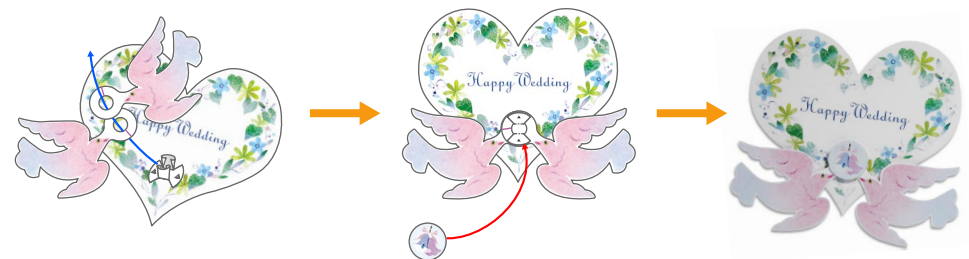
2 Fold the dove (right) and dove (left) in half and glue, and cut them out according to their shape.



3 Glue the heart back and front together. Attach the fan-shaped part on the back of the pivot to the glue spot on the heart (front).



4 Put the pivot through the holes in the dove (right) and dove (left), attach the pivot cover to the fan-shaped part on the front of the pivot, and you're done!



Assembly Instructions

<p>..... Mountain fold (dotted line) *Make a mountain fold.</p> <p>- - - - - Valley fold (dashed and dotted line) *Make a valley fold.</p> <p>▲ Black triangle Glue here</p>	<p>———— Scissors line (solid line) *Cut along the line.</p> <p>———— Cut in line (solid line) *Make a cut.</p> <p>△ White triangle Glue the back</p>
---	--

You will need
scissors, paste, a used ballpoint pen (tracing along the fold lines makes them easier to fold)

Caution: Glue, scissors, and other tools may be dangerous to young children so be sure to keep them out of the reach of young children.

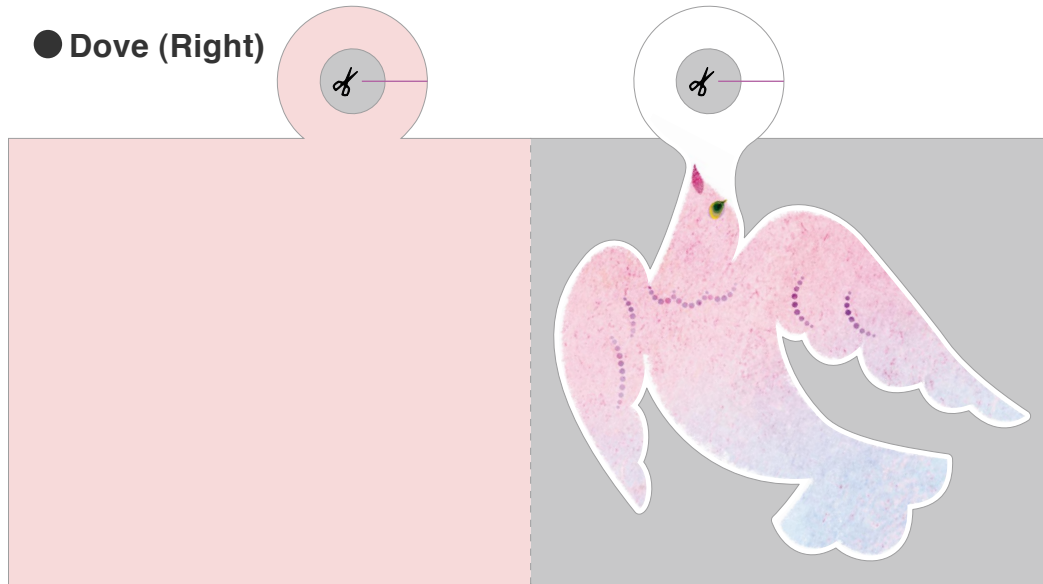
● Heart (front)



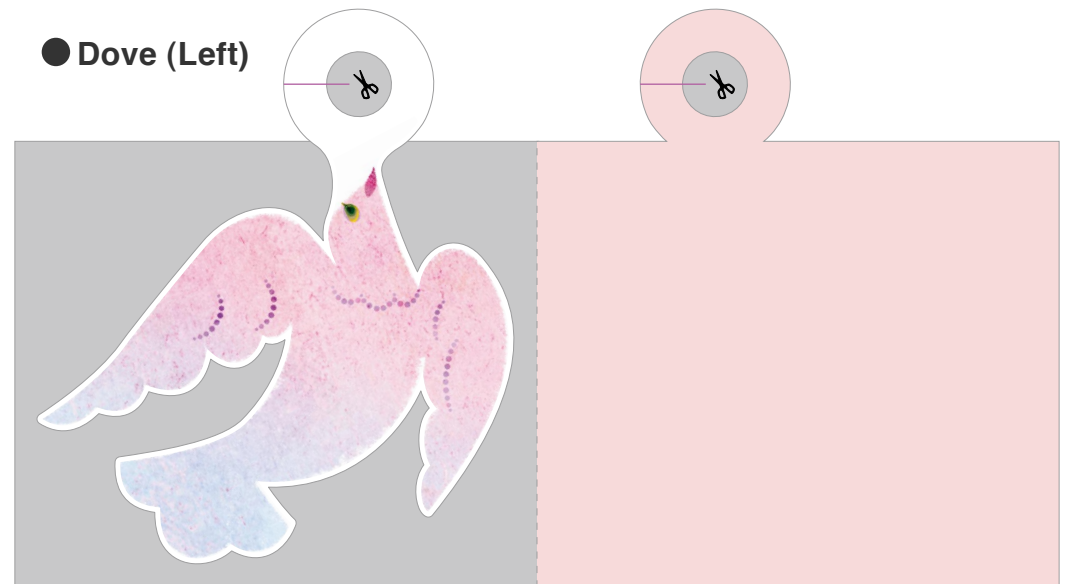
● Heart (back)



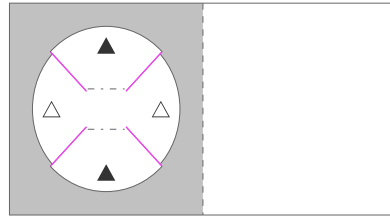
● Dove (Right)



● Dove (Left)



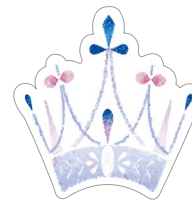
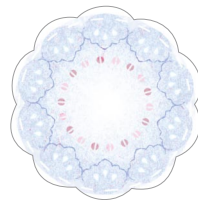
● **Pivot**



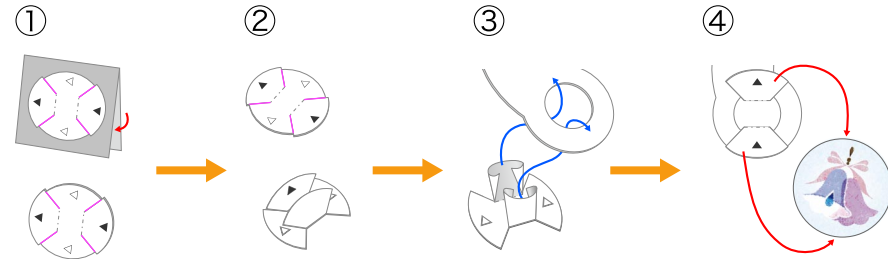
● **Pivot cover**



● **Stickers**

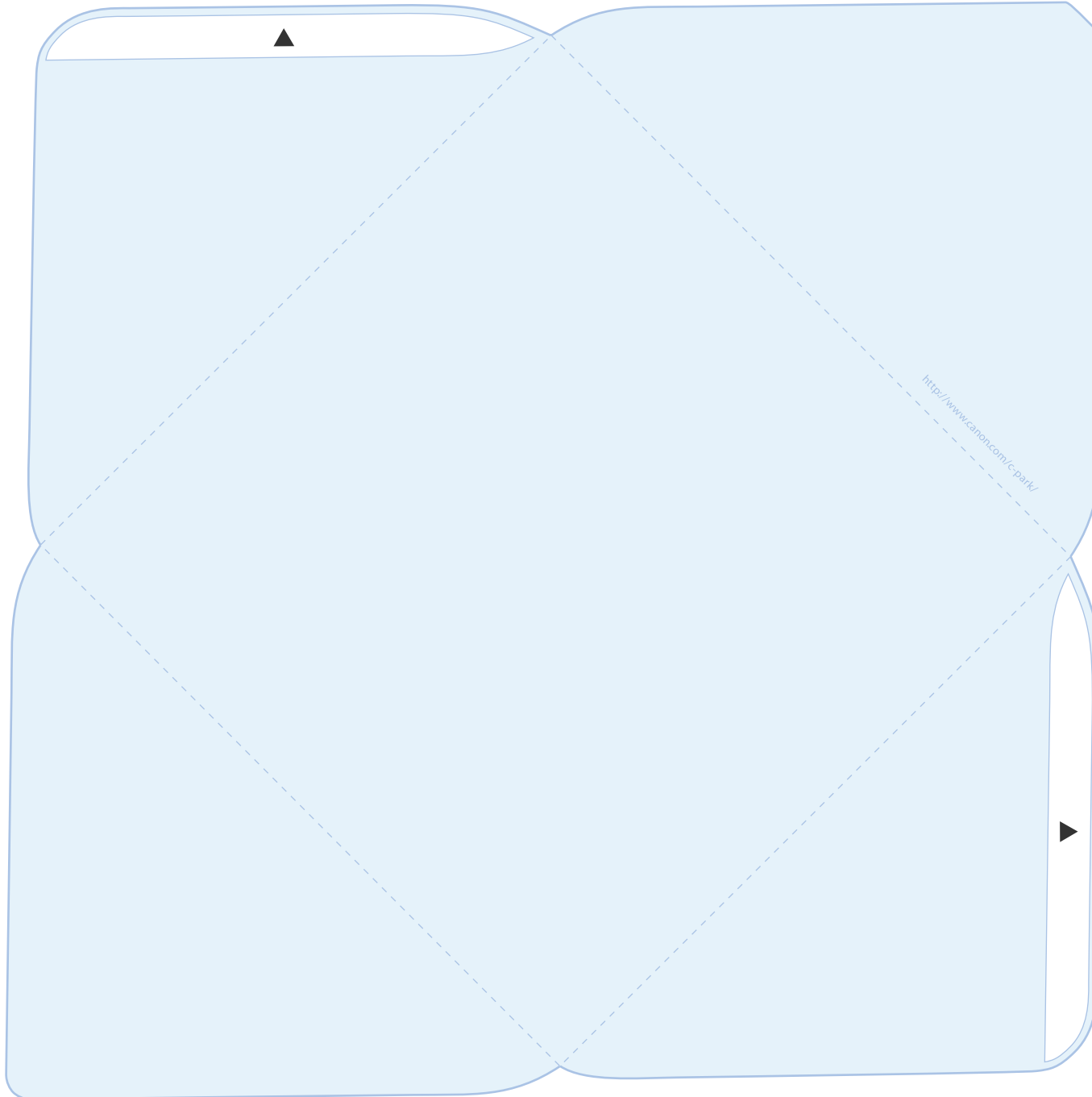


How to use the pivot



- 1: Fold in half and glue, then cut out according to its shape.
- 2: Fold the bigger fan shape along the fold lines.
- 3: Curve the parts to be inserted into the fan as shown in the diagram, insert into the hole, and open the fan-shaped parts on the other side.
- 4: Attach the pivot cover to the fan-shaped part on the front of the pivot, and attach the back of the pivot to the glue spot on the heart (front). Check that the parts can swing, and you're done!

● Envelope



Assembly Instructions

