



Assembly Instructions

- **Mountain fold** (dotted line)
*Make a mountain fold.
- **Valley fold**
(dashed and dotted line)
*Make a valley fold.
- **Scissors line** (solid line)
*Cut along the line.
- ▲ **Black triangle**
*Glue here.



scissors, paste, a used ballpoint pen (tracing along the fold lines makes them easier to fold)

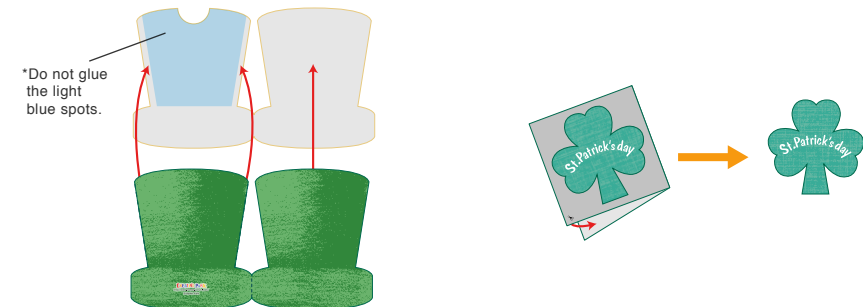


Caution: Glue, scissors, and other tools may be dangerous to young children so be sure to keep them out of the reach of young children.

1 Cut out the parts and fold them along the fold lines on each.



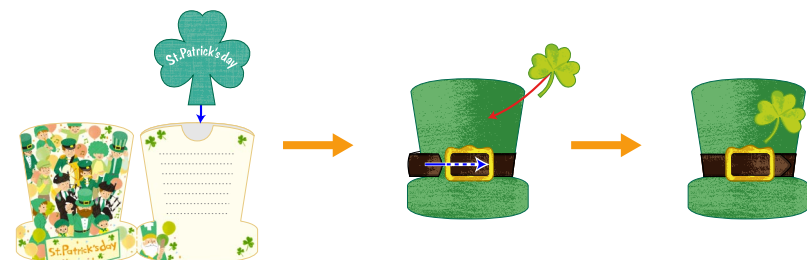
2 Glue the hat (front, back) to the hat (inside).
Fold the cards in half, apply glue, and cut out each shape.



3 Glue the buckle onto the belt.

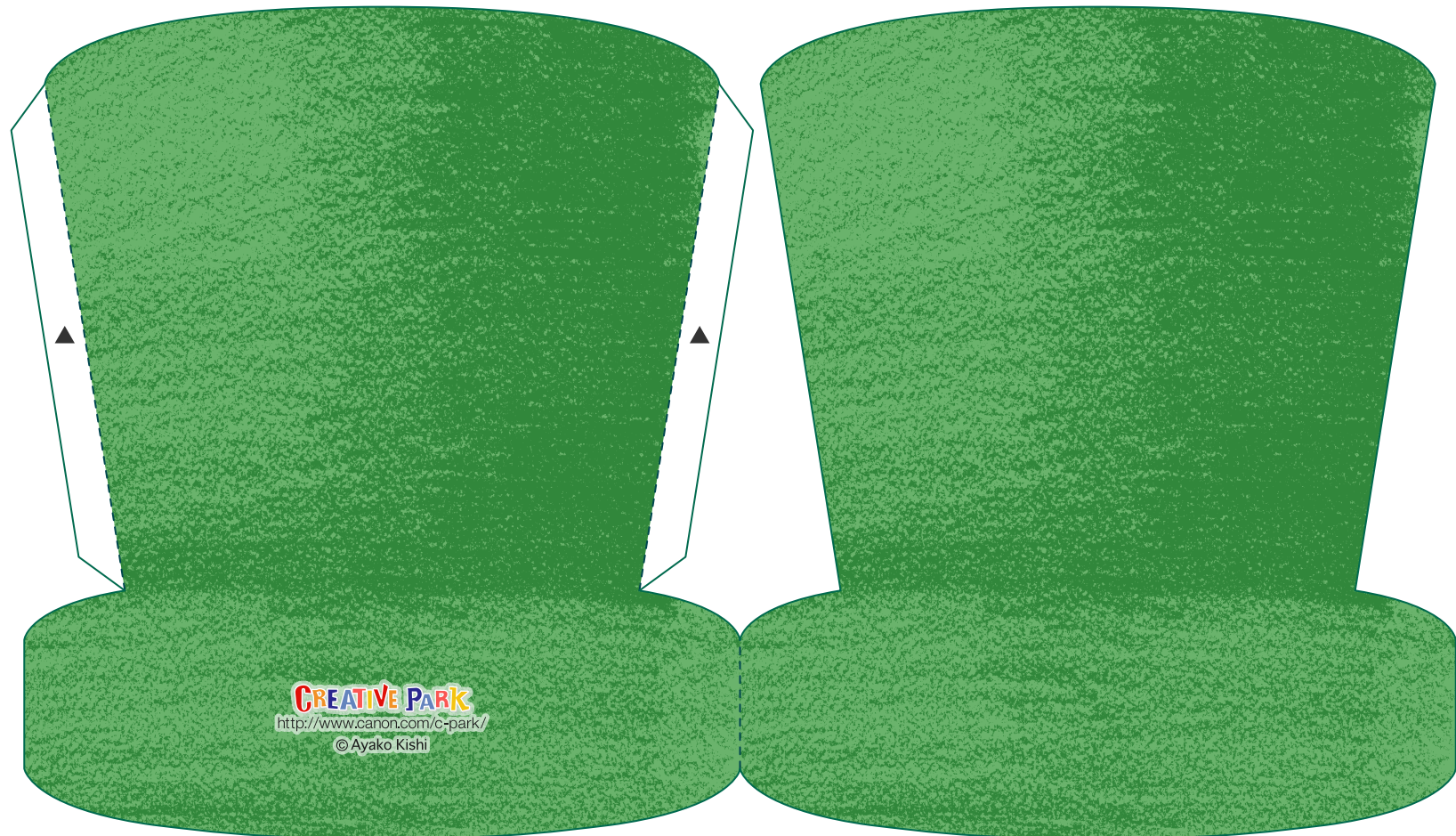


4 Write a message on the hat (inside) or card (back), and insert the card into the hat.
Glue on the decoration wherever you like, fasten the belt, and it's complete.



● Hat (back)

● Hat (front)



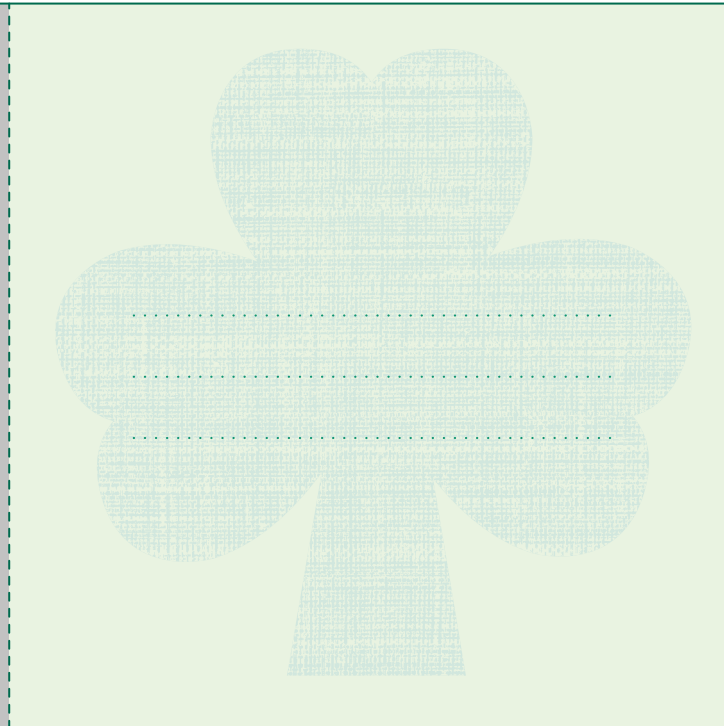
● Hat (inside)



● Card (front)



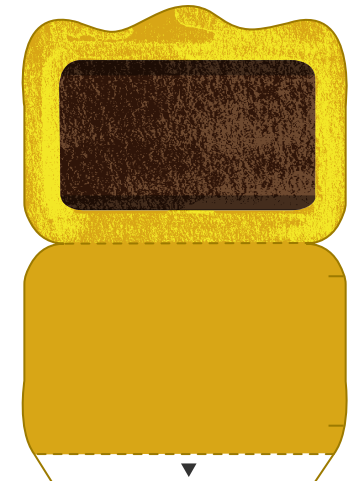
● Card (back)



● Decoration



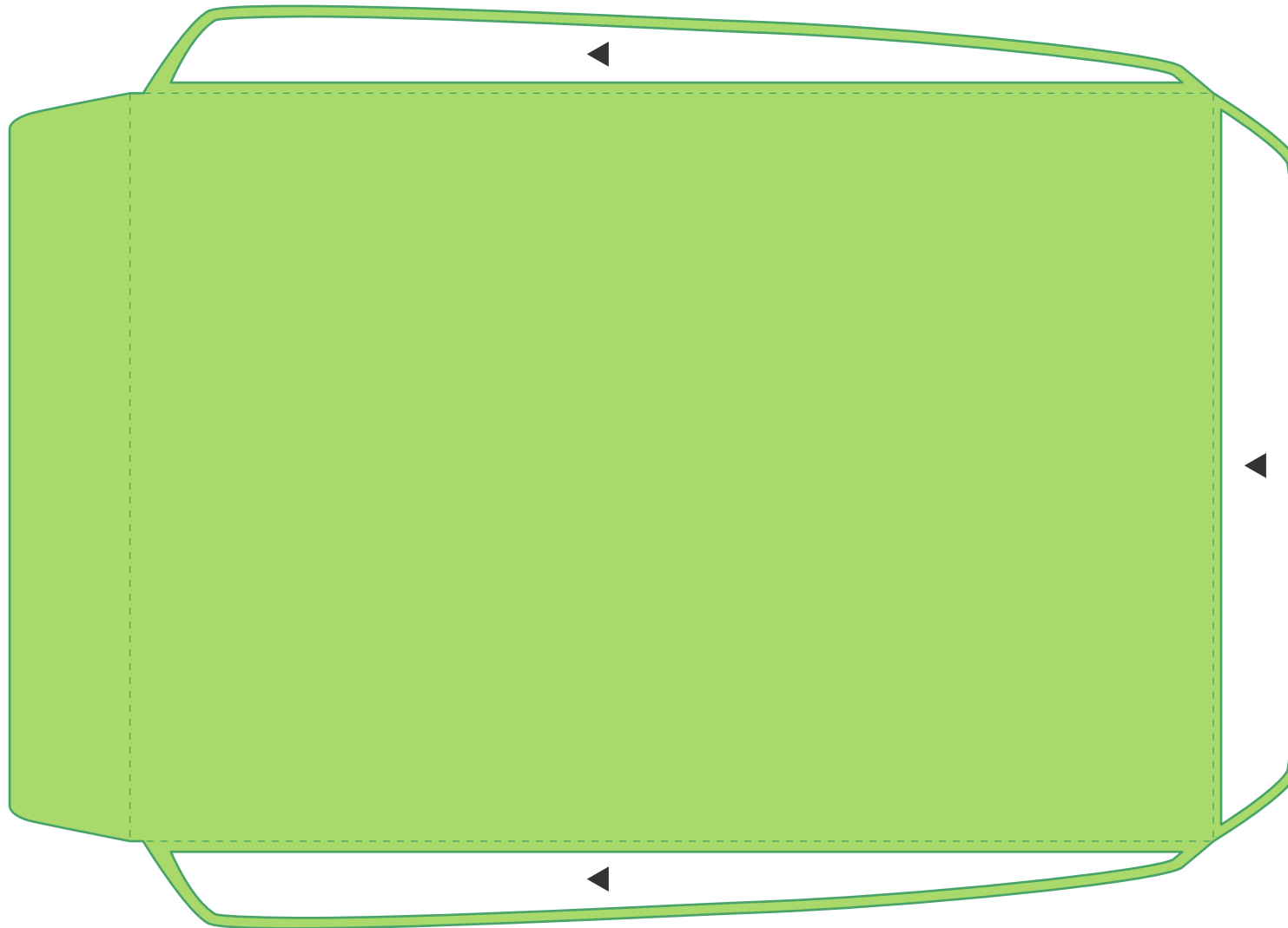
● Buckle



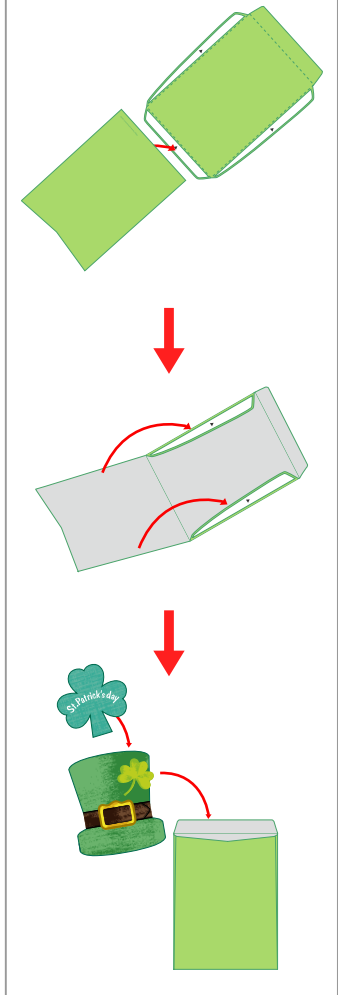
● Belt



● Envelope



Assembly Instructions



● Envelope



● Stickers

