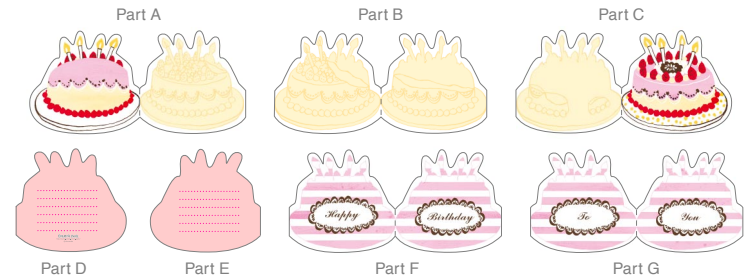
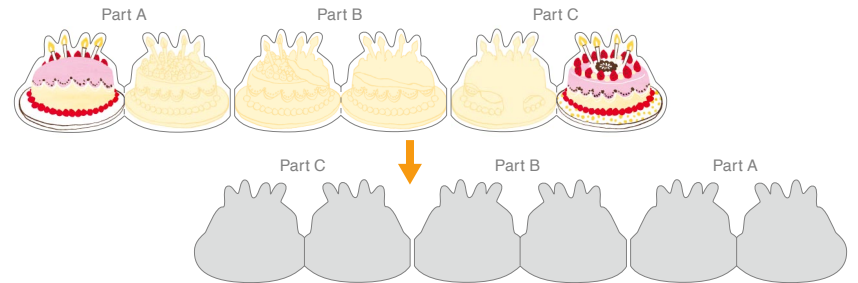




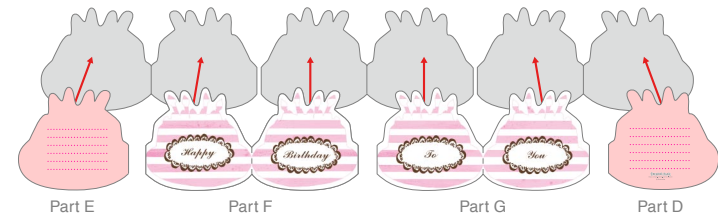
1 Cut out the parts and fold them along the fold lines on each.



2 Line up parts A to C in order, and turn each part over.



3 After turning them over, glue parts D to G to parts A to C.



4 You're done! Write a message and put it in the envelope, and attach whichever sticker you like.



Assembly Instructions

----- **Mountain fold** (dotted line) ——— **Scissors line** (solid line)
 *Make a mountain fold. *Cut along the line.

▲ **Black triangle**
 *Glue here.

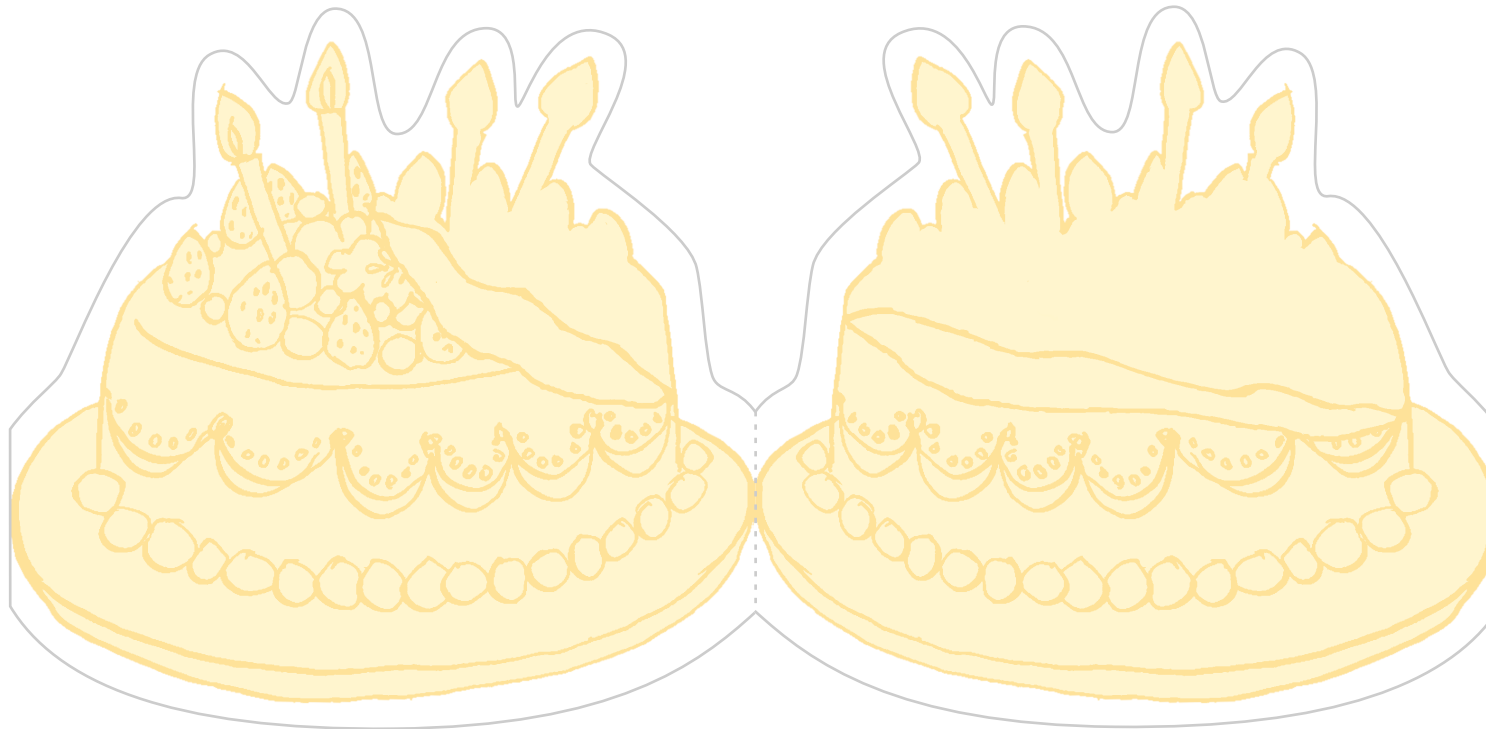
You will need
scissors, paste, a used ballpoint pen (tracing along the fold lines makes them easier to fold)

Caution: Glue, scissors, and other tools may be dangerous to young children so be sure to keep them out of the reach of young children.

● Part A



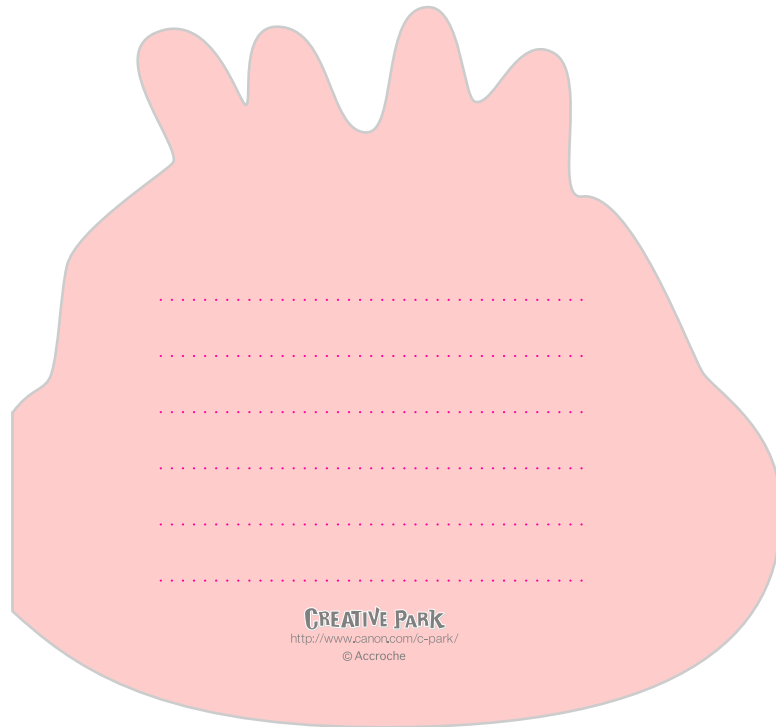
● Part B



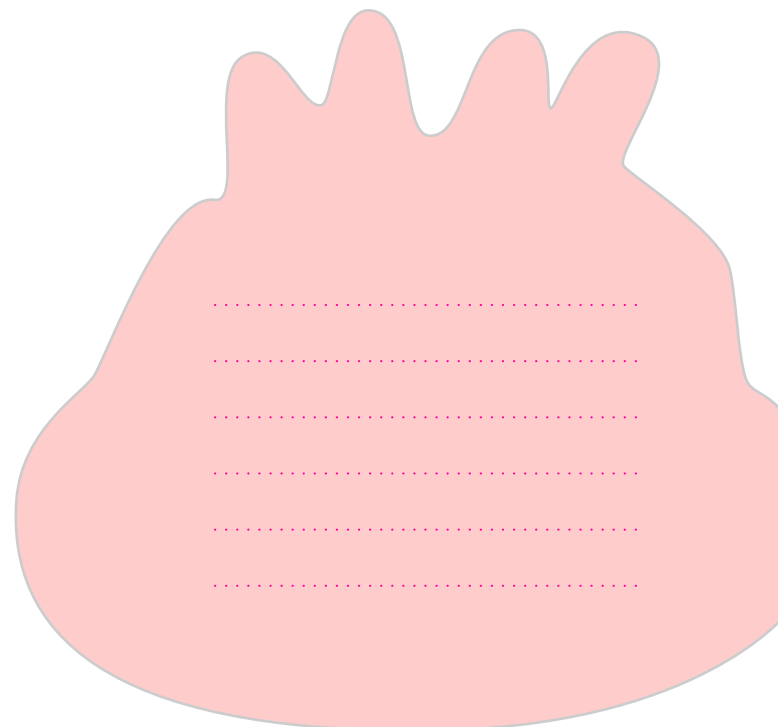
● Part C



● Part D



● Part E



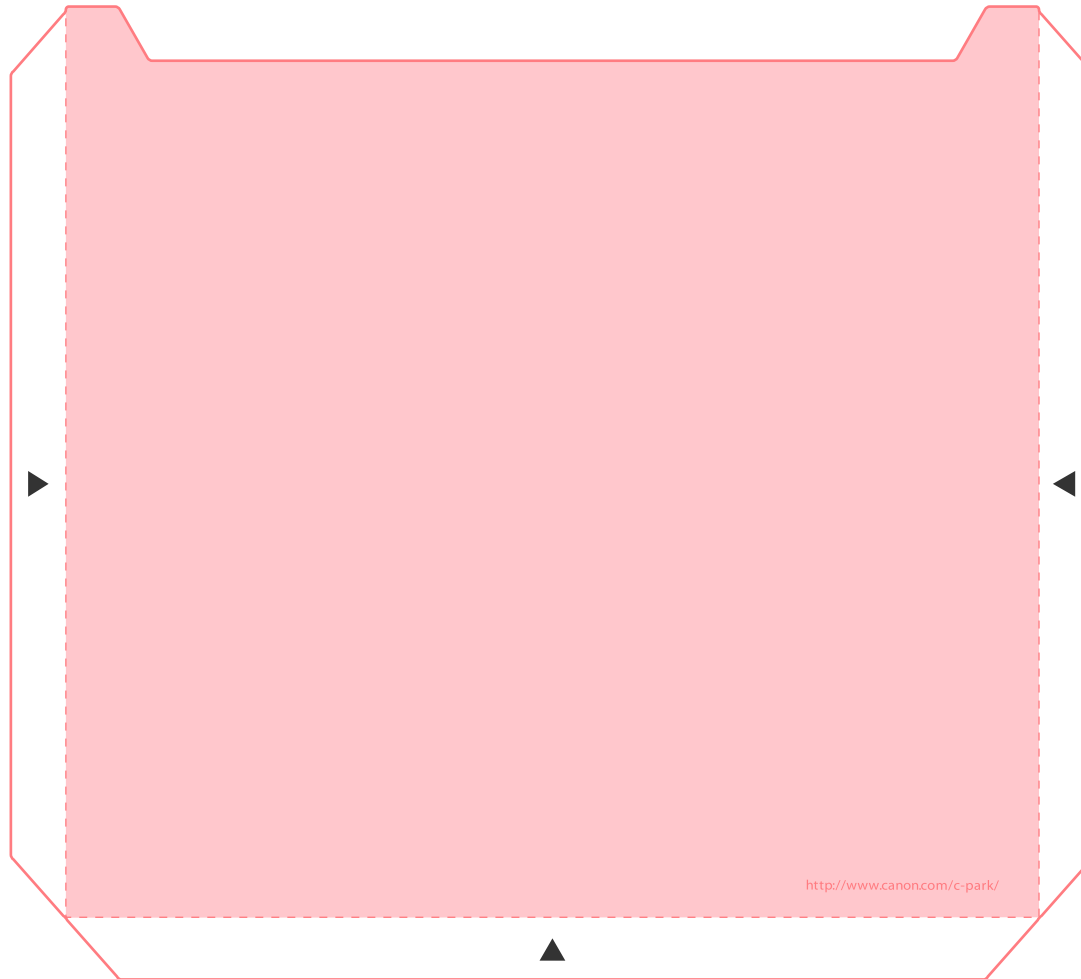
● Part F



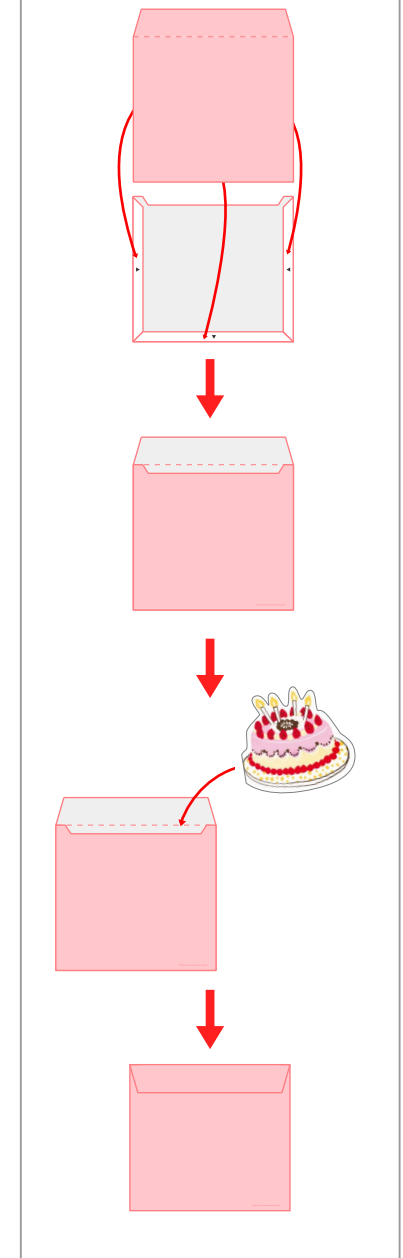
● Part G



● Envelope



Assembly Instructions



● Envelope

● Stickers

