

Bobs Card Models

www.bobscardmodels.altervista.org and www.zealot.com [Resources]



Canadair CL-415 (1:144)

The Bombardier 415 (formerly Canadair CL-415) is a Canadian amphibious aircraft purpose-built as a water bomber. It is the only aircraft designed and built specifically for aerial firefighting and is based on the company's CL-215. It is marketed in the USA as the Superscooper.

General characteristics

Crew: 2 pilots
Payload: 1,350 imp gal (6,140 L)
Length: 65 ft 1 in (19.82 m)
Wingspan: 93 ft 10 in (28.6 m)
Height: 29 ft 6 in (8.98 m)
Empty weight: 28,294 lb (12,834 kg)
Max takeoff weight: 43,758 lb (19,848 kg)
Water capacity 6300 litres

Performance

Maximum speed: 234 mph (377 km/h)
Range: 1,518 miles (2,443 km)
Service ceiling 14,700 ft (4,500 m)
Rate of climb: 1,378 ft/min (420 m/min)

Building Instructions

All green areas and slits, must be cut out, but only when told to do so.

A: Fuselage

1. Cut out the rear fuselage [6], cut green slit for fin, fold/close/glue. Attach the large tab and the 2 small tabs on top/front of the fuselage.
2. Cut out central fuselage [5], fold, close and glue. Assemble bulkhead A then glue in position at rear of 5 (flush with rear).
3. Assemble 3 then glue onto bottom 2. When dry, cut out green areas.

4. Assemble Nose Landing Gear Compartment **18** and glue in position in Nose Bottom **2**.
5. Glue Cockpit **4** onto **3**.
6. Glue Nose Tip **1** in place.
7. Insert/glue in Nose a weight of about 1g.
8. Glue the whole unit **1-4** onto the front of fuselage **5**.
9. Glue fin **8** in place on top of rear fuselage using the Vertical Strut **9**.

B. Rear Wing / Stabiliser

10. Parts **13-16**. Cut out, , glue, assemble, and then fix on Fin. Finish by capping with **12** (**NB : make sure it is glued in place horizontally**). Add Tail Fin Light **17**.

C. Main Wings

11. Cut out wing **19** , and bend tabs, and close/glue.
12. Glue on both wing fin tips **23** .
13. Cut out wing cradle **21**, glue the 4 corner tabs and the side tabs, and glue (liberally) cradle in position on the fuselage.
14. Glue the wing in position on the wing cradle.
15. Glue the cradle cover **22** in position, carefully positioning and gluing the 2 strips under each wing. Trim excess card.
16. Glue on the spoilers **24** on each wing $\frac{3}{4}$ of the way to wing tips on the top of the wings 'position marked).
17. Cut out the 8 Aileron Hinges **25** and glue each on the underside of each wing on the positions marked.

D. Engines

18. **Engine Cowlings:** Cut out Right Cowling [**27**], and assemble. Round the top of the cowling to fit the bulkheads [**28**] and [**28A**], which are then glued in place. Roll/glue Exhaust [**30**] after blackening the inside. Glue in place at rear of [**27**], then close the rear portion of [**27**]. The exhaust should protrude about 7mm from the rear of the cowling.
Glue cowling in position on right-hand wing.
19. Repeat for the left-hand cowling.

E. Wing Floats

20. Cut out the two floats **34**, assemble and glue
21. Cut out the float supports **35** , glue in place
22. Add the diagonal struts **36** for strength.

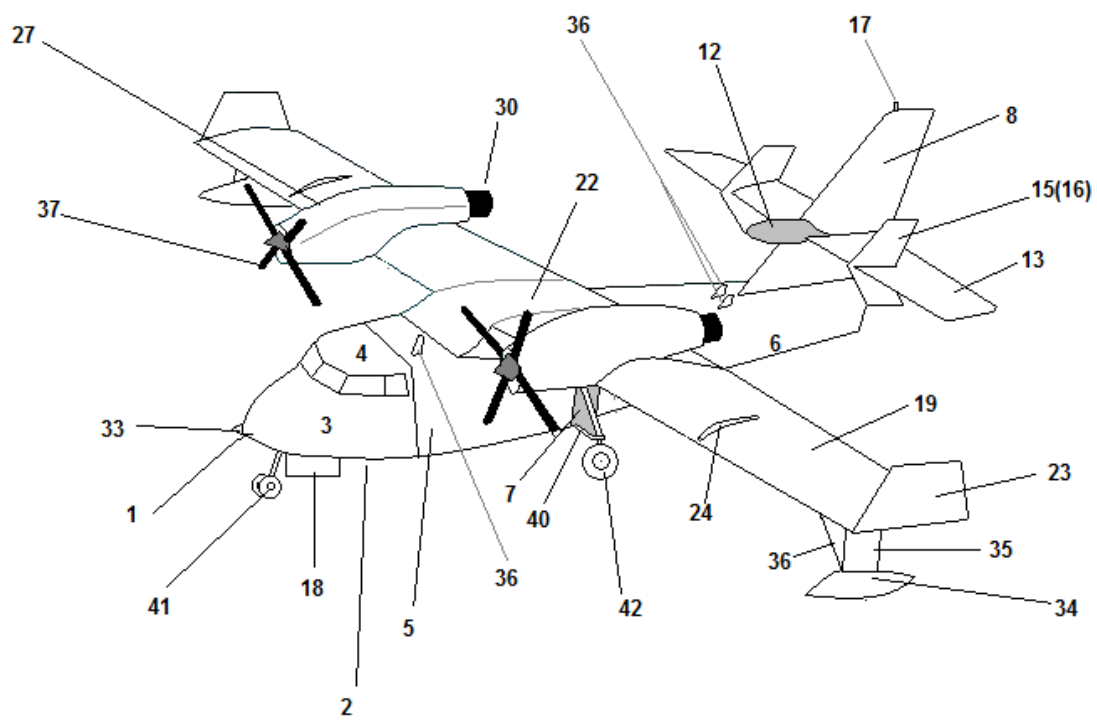
F. Propellers

23. Cut out propellers [**37**], and glue each couple back-to-front. Cut out hubs [**38**], glue to a cone and when dry glue on the propellers. Glue in place on the cowling. Cut out Air Intake [**39**] and glue in place under each engine cowling.

F. Landing Gear

24. Assemble Landing Gear compartment floor [**7**], and glue in place. On this, glue on the Landing Gear Strut [**40**].
25. **Landing Gear:** all four wheels should be formed by rolling the glued black strips **41** and **42** around a pin. (see Photo 3)
26. For all vertical axle-struts, roll strips of card or paper, and glue the wheels on one end.
27. Cut out and attach the 3 radio masts **32**, and the nose radar **33**.

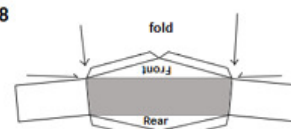
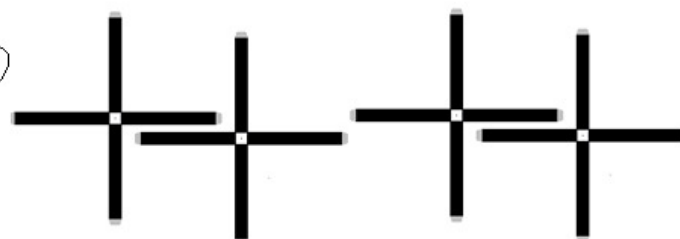
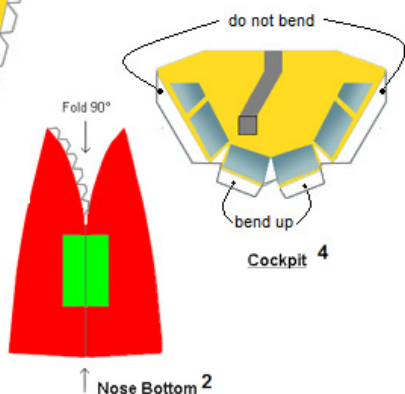
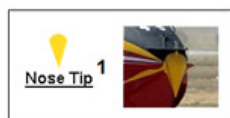
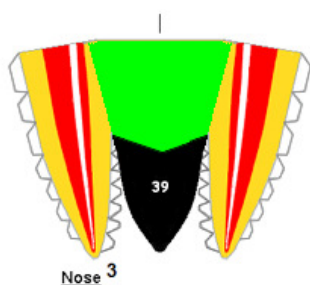
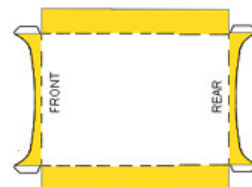
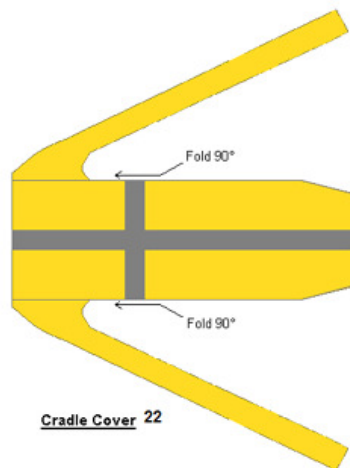
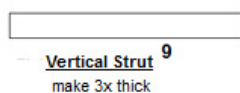
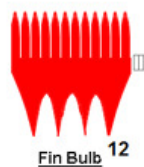
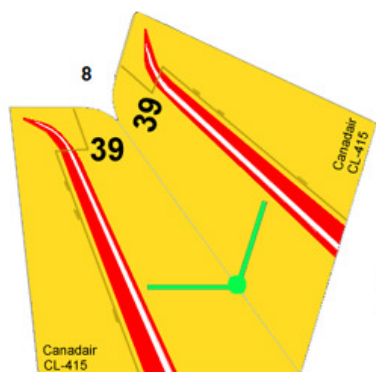
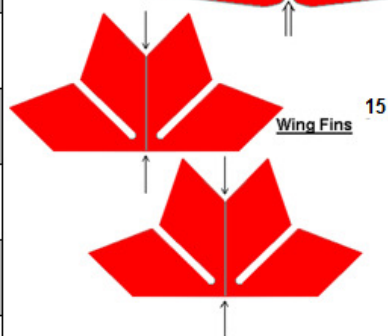
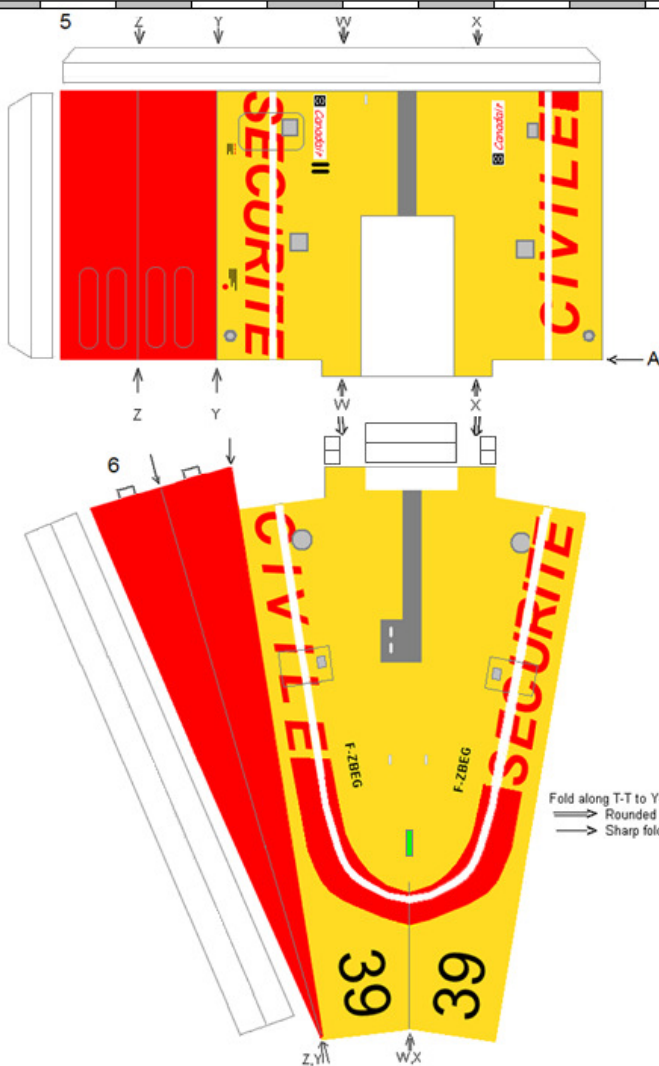
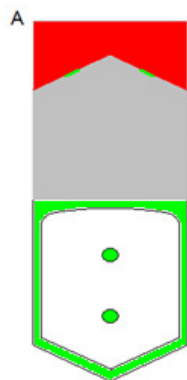
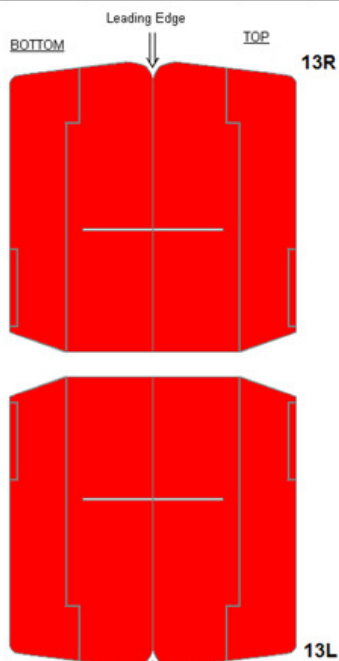
---oooOooo---





14
Wing Strut

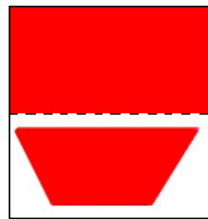
3 x



Sheet 1

cl415_144

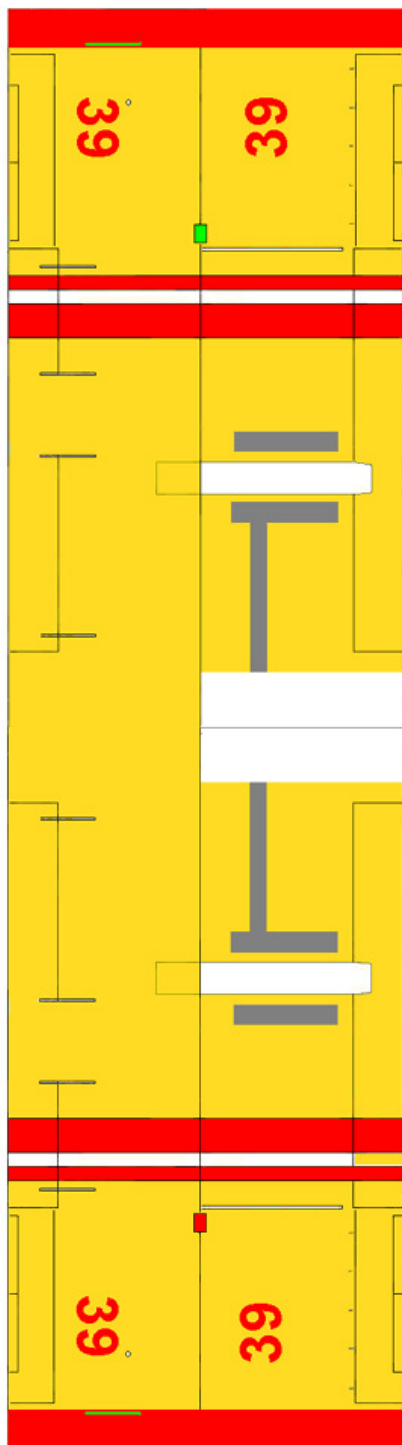
Tip Fin 23
Fold and glue



Lower

Upper

19



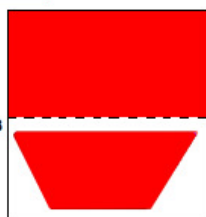
Spoiler 24



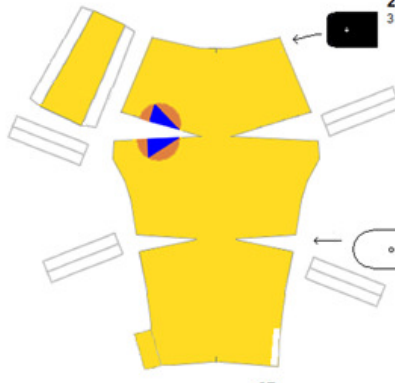
Spoiler 24



Tip Fin 23
Fold and glue



28
3 x thick



Left Cowling 27

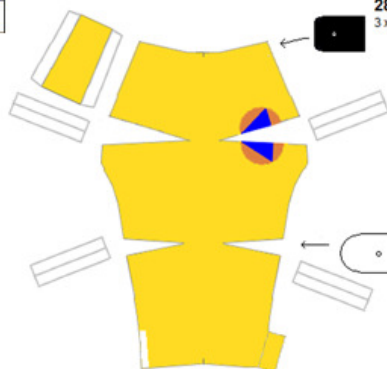
28A
3 x thick



Roll around a
5mm rod

Exhaust Pipe 30 Blacken inside

28
3 x thick



Right Cowling 27

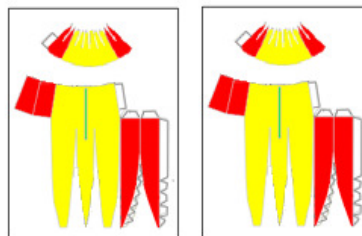
28A
3 x thick



Roll around a
5mm rod

Exhaust Pipe 30 Blacken inside

Floats 34

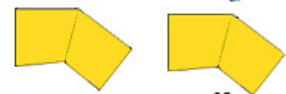


Diagonal struts 36



Leading edges

Float supports 35



32
Radio mast

Make 2x thickness
Glue on 1 mast just behind cockpit on top,
LH side. The other 2 just in front of the tail
fin

33
Nose radar

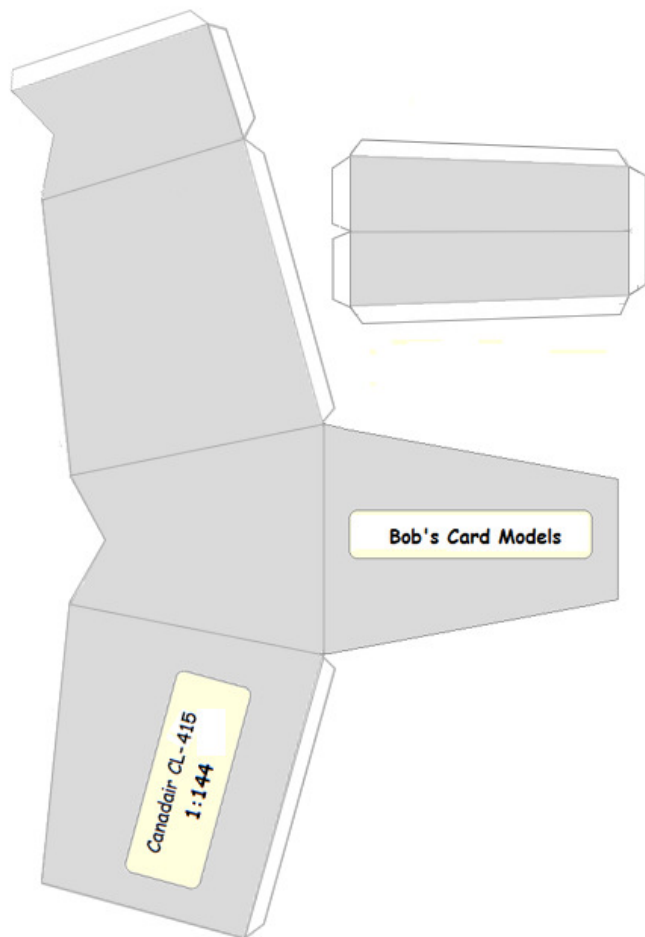
Fold, glue, cut out, and
glue to front of nose



Fold and glue

Aileron Hinges 25





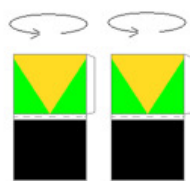
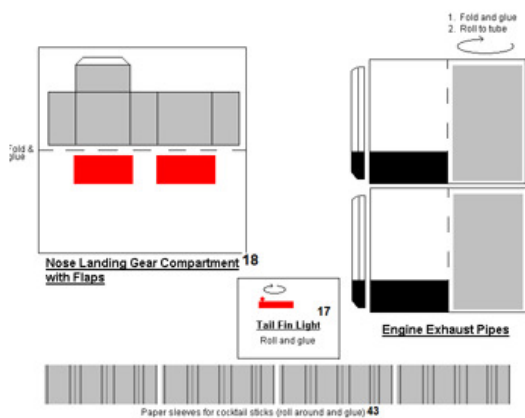
Landing Gear Strut 40

make 2x thick

Red holes: vertical
Green holes: slanting



See photos for assembling.



Air Intake 39
Cut out, fold, glue. Form around ca 8mm rod (black inside), glue tab. When dry, cut out green area. Flatten to oval form, glue under each engine.

PRINT ON PAPER 80-90 G