

PAPER CRAFT

Seasonal Scenes of Japan

Goldfish

Assembly Instructions



Thank you for downloading this paper craft model of the Goldfish. By matching the names and numbered parts in the instructions, you and your family can complete a paper craft model.

- Assembly instructions: Ten A4-sized sheets.
- Paper craft: Six A4-sized sheets with 45 parts in all

These instructions apply only to the "Goldfish." These Paper Craft parts are easier to work with when printed out on strong, thick paper (like postcard stock).

1 To begin

■ Tools and materials needed

-Ruler - scissors - blade cutter or "Exacto-knife" - awl or other pointed tool (for making a folding crease) - felt pen - pin set - glue - hand towel (for cleaning your fingers) - dictionary or other heavy book (to press the papers flat).

■ Items of Caution

*Take care when using sharp or pointed objects or when using bladed cutting tools. Place a heavy sheet of paper under the paper you want to cut.

*Use glue and other adhesives only in well-ventilated areas.

*When printing, use a slightly reduced font size. There may be differences in dimensions, depending on the type of printer used.

2 How to assemble

*Follow the working method and markings carefully.

*Cut carefully along the outer line with cutting blade, Exacto-knife or scissors.

One - point Advice

*Cut carefully with cutting blade, Exacto-knife or scissors.

*For folding parts, first use an awl or other pointed tool to make a light crease along the dotted or solid line. This will make the folds straight. Avoid making strong creases, as this will cause the paper to tear.

*As an adhesive, white wood glue is recommended. Avoid over application as this may cause the paper to wrinkle.

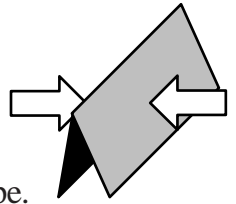
*Before beginning assembly, test adhesive amounts on extra paper.

*Occasionally, white spots will be apparent on folds and cuts. Use a marker or pencil to fill in these spots. It is recommended that this be done after each stage of assembly because coloring becomes more difficult once parts are assembled.

Basic working method and markings

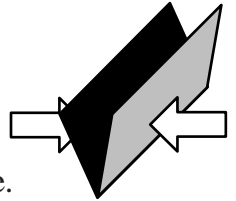
Solid lines

Fold along these lines.
The printed surface should be on the outside of the folded shape.



Broken lines

Fold along these lines.
The printed surface should be on the inside of the folded shape.

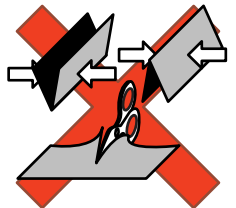


Dotted line

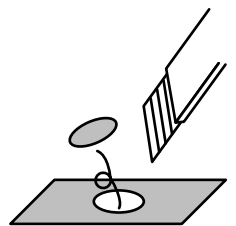
Cut along these lines.



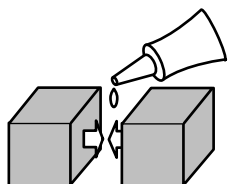
Do not fold or cut the parts marked X.



Cut out parts marked with an asterisk(*).



Red dots are the reference positions for gluing surfaces.



3 Assembly

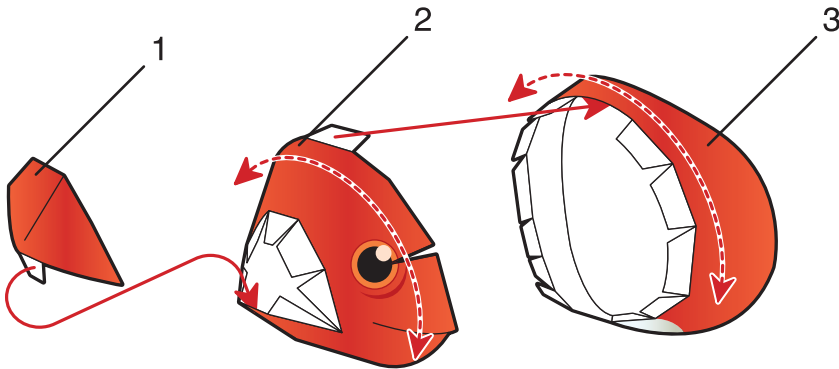
Please refer to the "Basic working method and markings" symbol chart on Page 2 to assemble each part.

Indication of Working Methods

---> Fold or Curve -> Glue

Goldfish

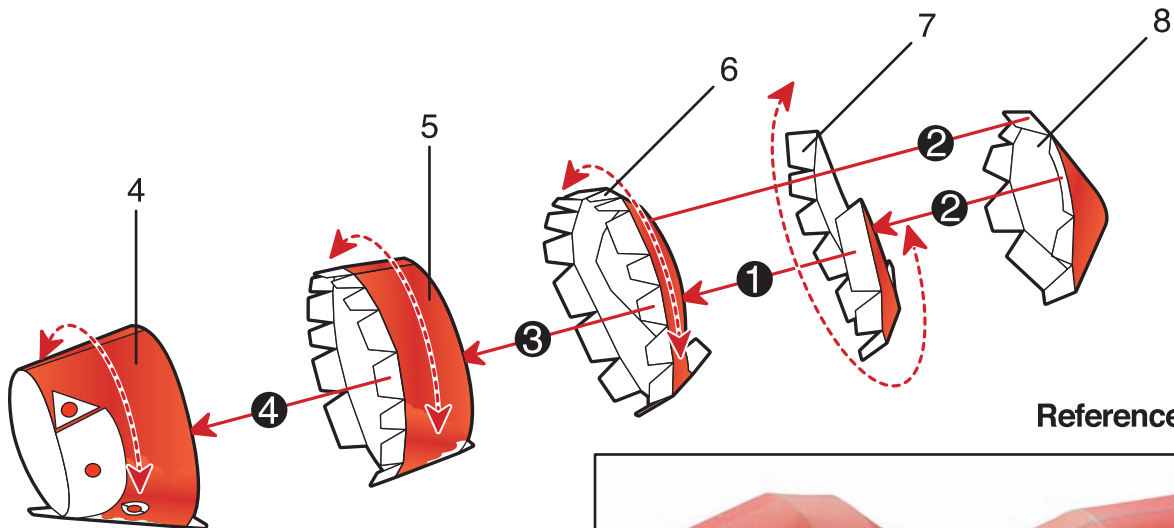
1.Assembly of Head Fold each relevant part according to the assembly symbols.
Please use the ● dots on each component as reference when gluing surfaces.



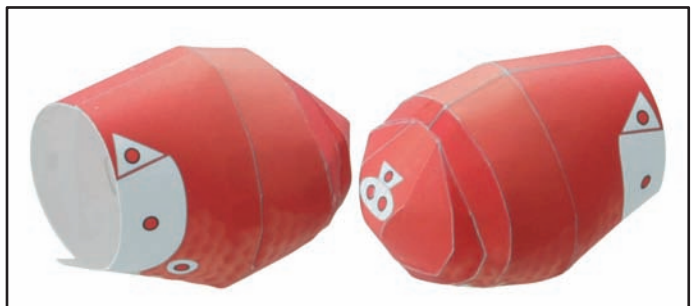
Reference photo



2.Assembly of Body1 Assemble according to steps ① through ④ .



Reference photo



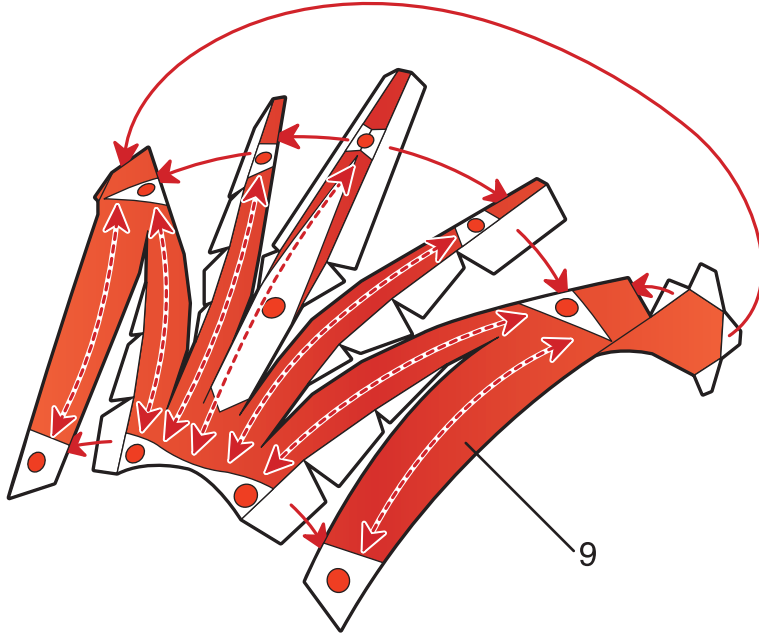
3 Assembly

Please refer to the "Basic working method and markings" symbol chart on Page 2 to assemble each part.

Indication of Working Methods  Fold or Curve  Glue

Goldfish

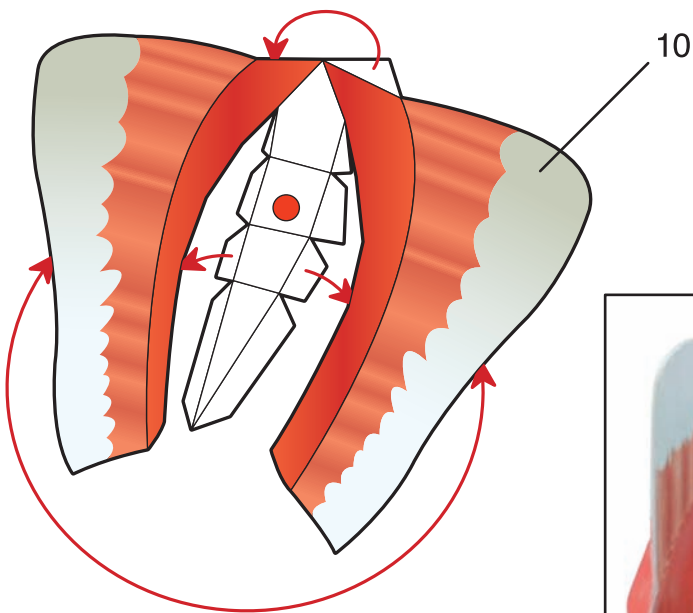
3.Assembly of Body2 Fold each relevant part according to the assembly symbols.
Please use the ● dots on each component as reference when gluing surfaces.



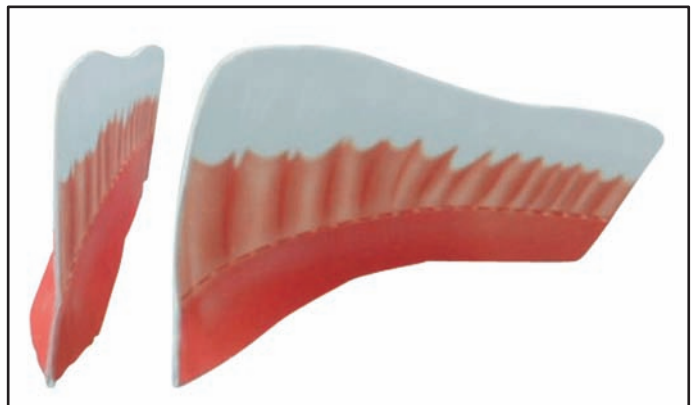
Reference photo



4.Assembly of Flippers1



Reference photo



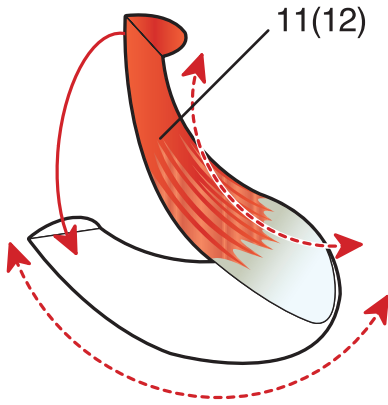
3 Assembly

Please refer to the "Basic working method and markings" symbol chart on Page 2 to assemble each part.

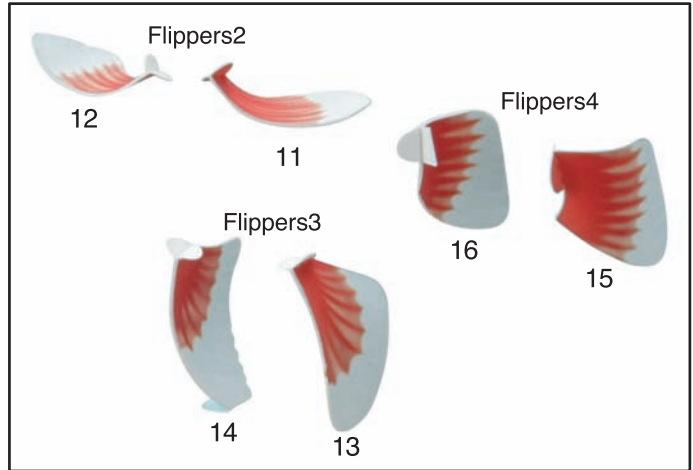
Indication of Working Methods Fold or Curve Glue

Goldfish

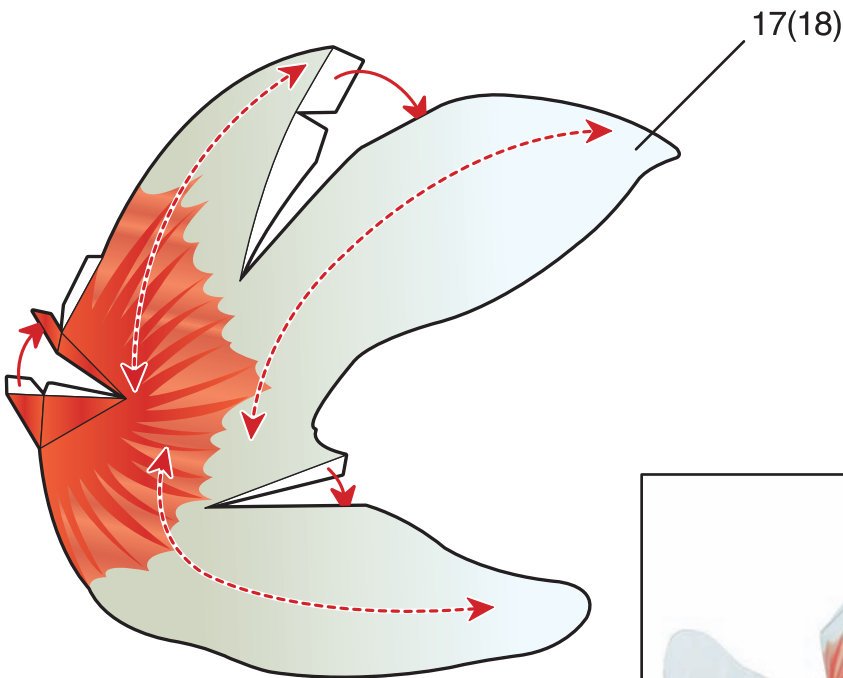
5.Assembly of Flippers2~4 Fold each relevant part according to the assembly symbols. Please use the ● dots on each component as reference when gluing surfaces.



Reference photo



6.Assembly of Flippers5



Reference photo



3 Assembly

Please refer to the "Basic working method and markings" symbol chart on Page 2 to assemble each part.

Indication of Working Methods  Fold or Curve  Glue

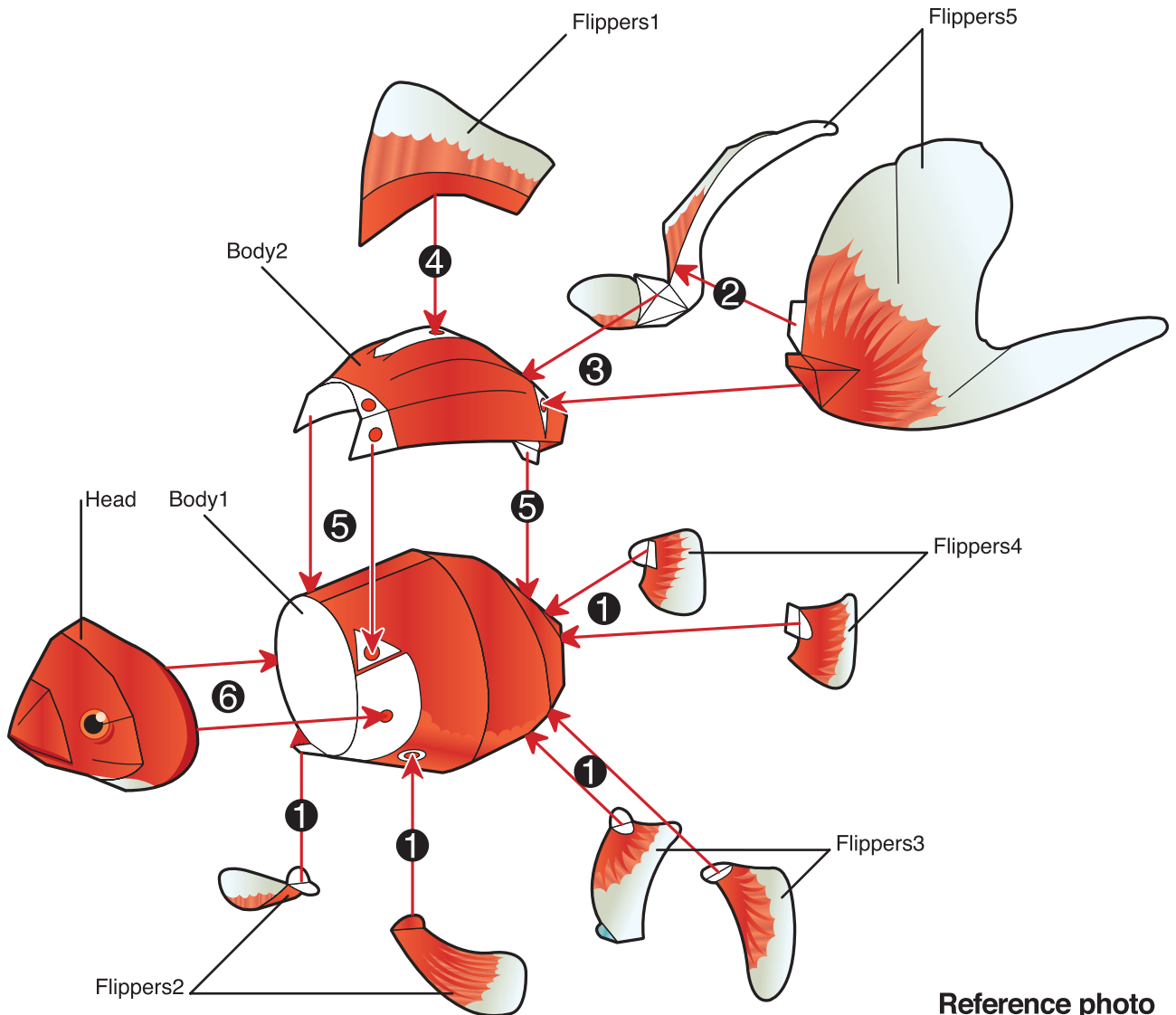
Goldfish

7. Assembly of Goldfish

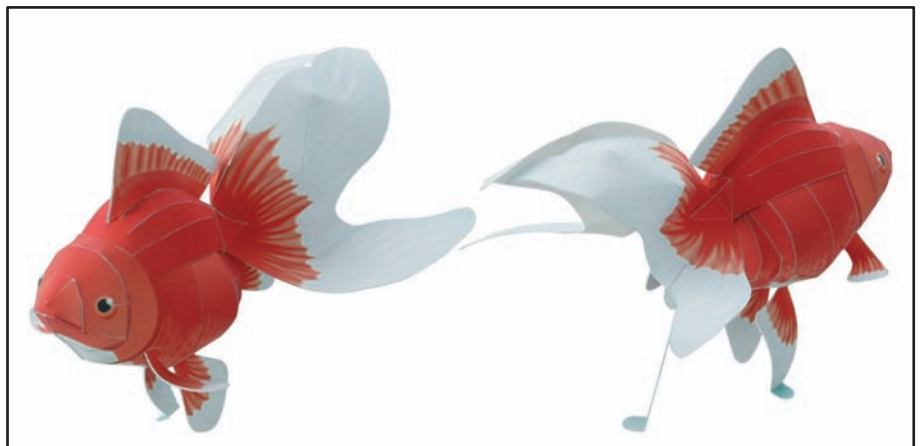
Fold each relevant part according to the assembly symbols.

Please use the ● dots on each component as reference when gluing surfaces.

Assemble according to steps 1 through 6.



Reference photo



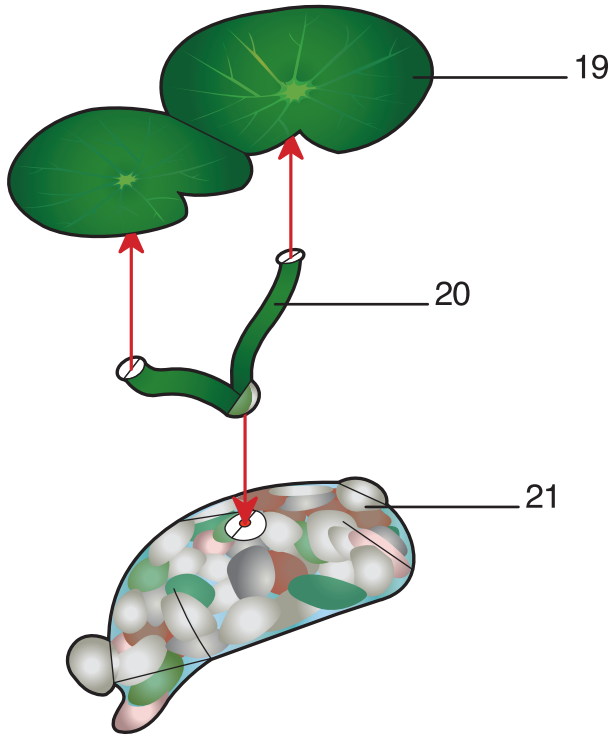
3 Assembly

Please refer to the "Basic working method and markings" symbol chart on Page 2 to assemble each part.

Indication of Working Methods  Fold or Curve  Glue

Goldfish

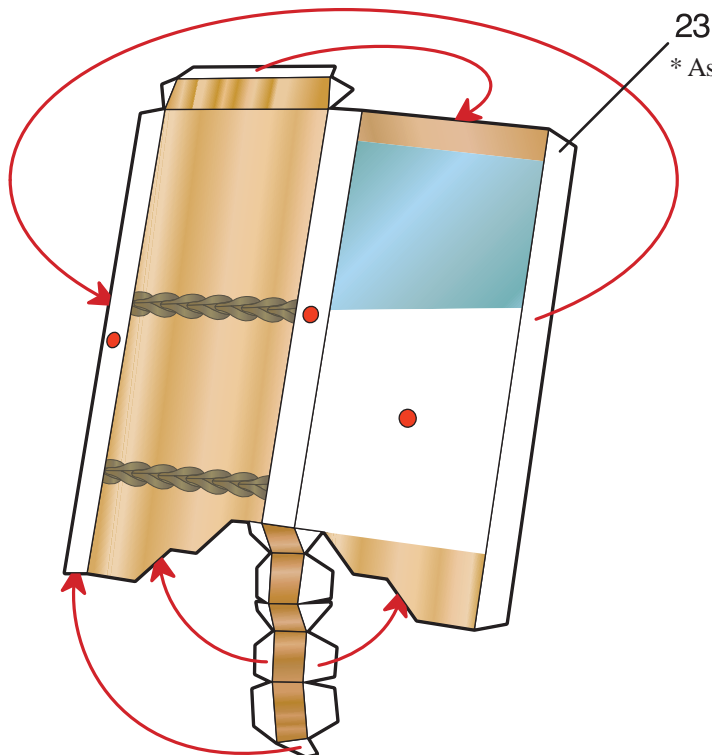
8.Assembly of Water Plant Fold each relevant part according to the assembly symbols.
Please use the ● dots on each component as reference when gluing surfaces.



Reference photo



9.Assembly of Basin1



* Assemble items 24 to 41 in the same manner.

Reference photo



3 Assembly

Please refer to the "Basic working method and markings" symbol chart on Page 2 to assemble each part.

Indication of Working Methods



Fold or Curve



Glue

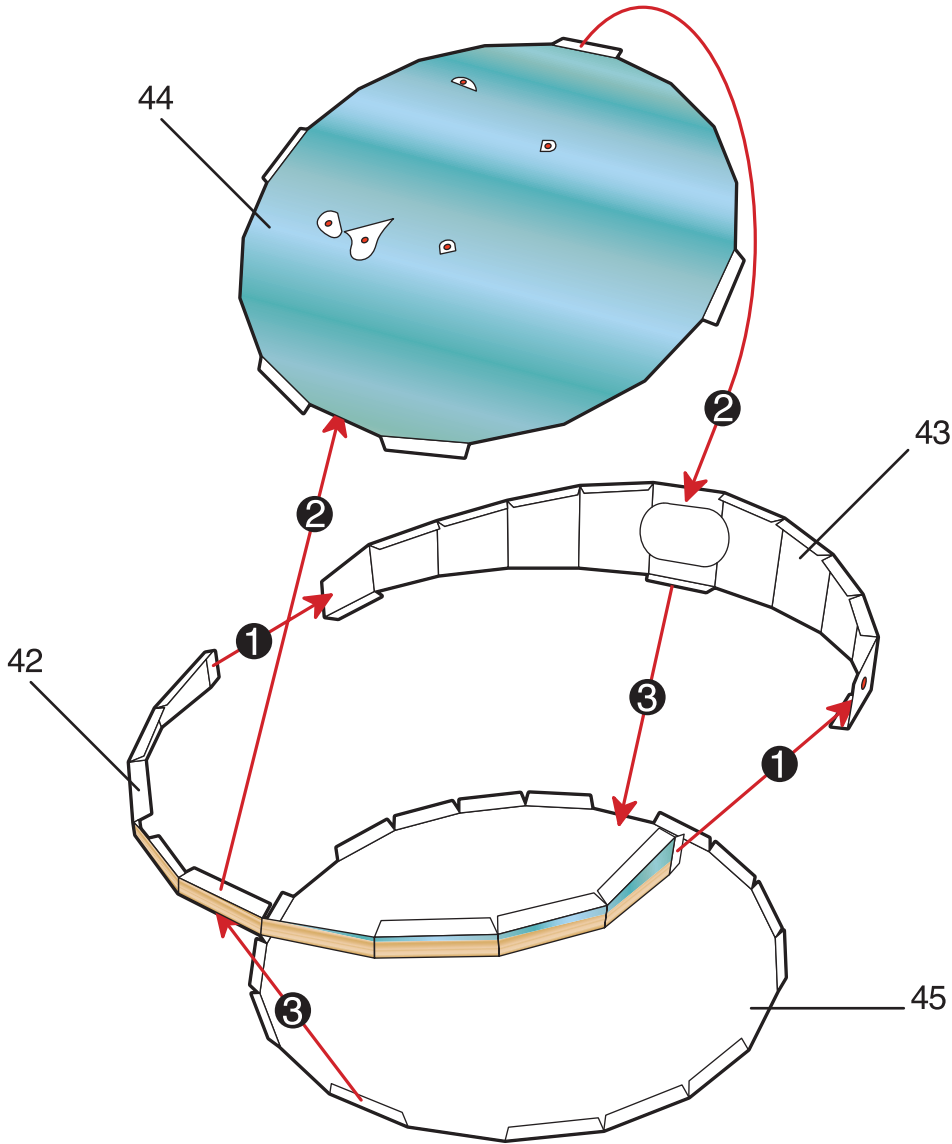
Goldfish

10. Assembly of Basin²

Fold each relevant part according to the assembly symbols.

Please use the ● dots on each component as reference when gluing surfaces.

Assemble according to steps ① through ③.



Reference photo



Please refer to the "Basic working method and markings" symbol chart on Page 2 to assemble each part.

Indication of Working Methods Fold or Curve Glue

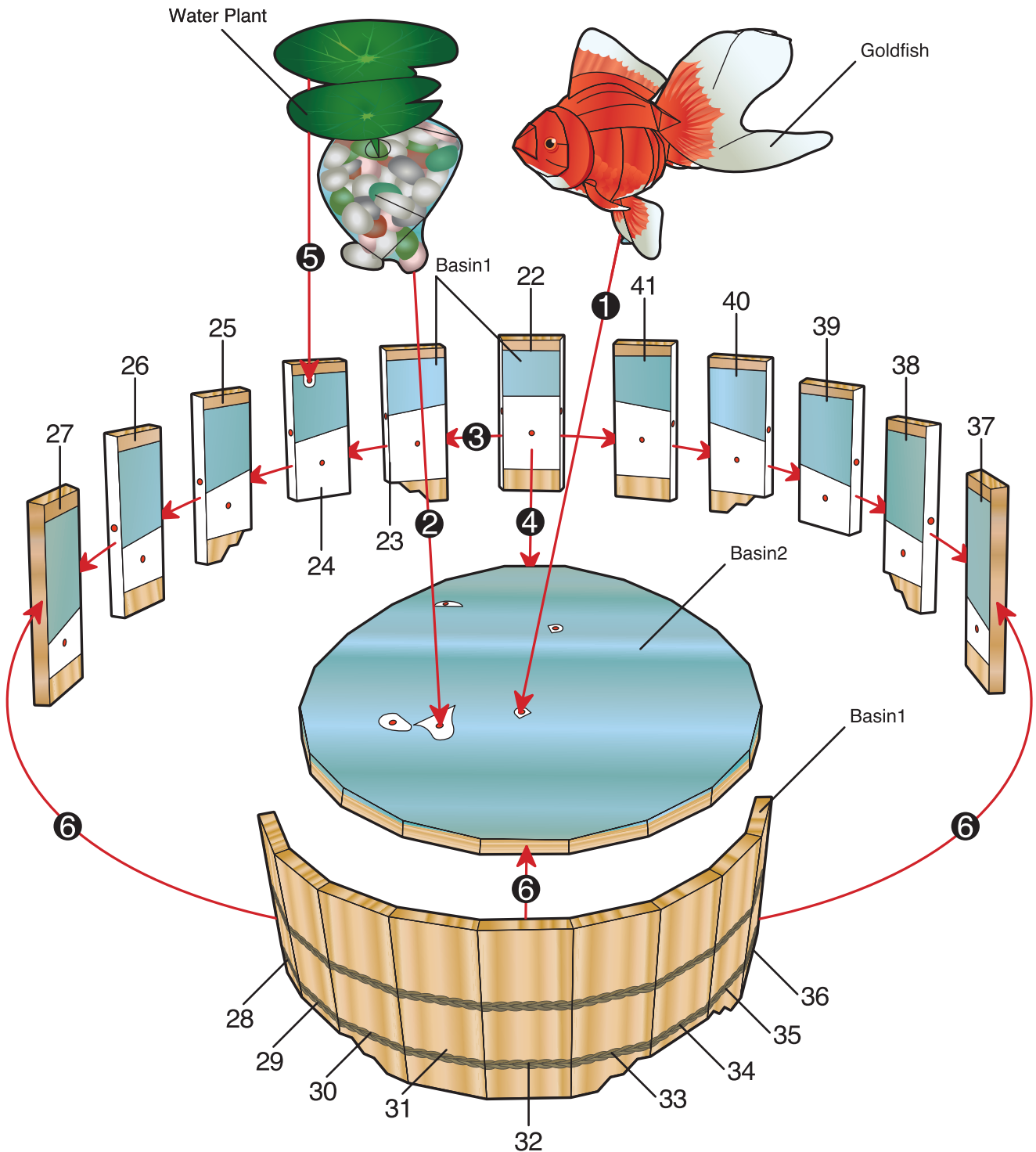
Goldfish

11. Finish Please use the ● dots on each component as reference when gluing surfaces.

Assemble according to steps ① through ⑥.

Procedure

- | | |
|-----------------------------------|------------------------------------|
| ① Glue Goldfish to Basin 2. | ④ Glue Basin 1 to Basin 2. |
| ② Glue Water Plant to Basin 2. | ⑤ Glue the Water Plant to Basin 1. |
| ③ Glue parts of Basin 1 together. | ⑥ Glue to Basin 2 if desired. |



4 Completion

Here are pictures of the completed models.
Please refer to them when assembling.

